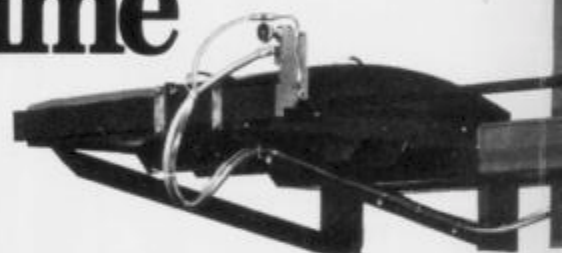
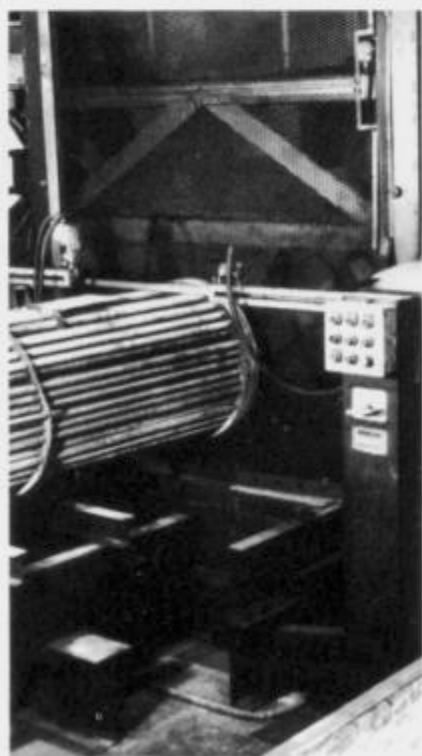


The unique Wellsaw 12-20G horizontal bandsaw saves thousands of dollars in cutting time on every job.



Time is money

And it's being wasted if your men are cutting through heat exchanger tube bundles with time-consuming, old-fashioned methods like hacksaws or cutting torches.



One cut instead of hundreds

With the Wellsaw 12-20G, one cut slices right through any tube bundle, all the way up to 78" in diameter, as close to the collar as you want, in less than a fraction of the time normally needed to cut the same bundle with any other method.

Big capacity for the big jobs

The Wellsaw 12-20G is available in three sizes. For cutting heat exchanger tube bundles, you'll want the biggest. This model has the giant-sized capacity to handle jobs up to 78 inches high by 85 inches wide. The three-horsepower motor drives a 31-foot blade, with a choice of three cutting speeds and hydraulically controlled blade pressure.

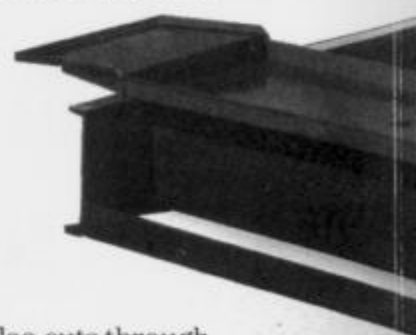
A proven product

The Wellsaw 12-20G has been manufactured and marketed by Wells for more than 20 years. And it has been doing the job of cutting heat

exchanger tube bundles at refineries and processing plants for nearly that long. One plant supervisor of a major refinery states that the unit paid for itself in less than a year, just in time savings to cut through bundles, compared with other cutting methods.

Available now

It won't take a year to build you a special unit. The 12-20G is a Wellsaw standard product, even in the largest of three sizes. We can get it to you fast!



Versatility

The 12-20G also cuts through heavy castings, die blocks, solid stock of any kind or any size, up to 78 inches by 85 inches. If it's big and it needs to be cut, the Wellsaw 12-20G can cut it!

Massive welded-steel base and frame. Saw frame carriage rides on tubular steel columns for true horizontal cutting action.



Complete up-front control panel for convenient operation.



Simple, rugged drive system includes five-horsepower motor and choice of three blade speeds. Ten ball bearing blade guides insure proper blade position for accurate cutting, long blade life.



Automatic blade pressure control is standard—a micro-switch constantly monitors and regulates blade pressure to prevent excessive feed rate. **Standard wet cutting system** is factory installed for more efficient cutting at higher speeds.

Big features to handle the biggest jobs.

Three sizes to meet your needs

Model	12-20G-48	12-20G-60	12-20G-72
Capacity	57" high (1448mm) 55" wide (1397mm) 16" throat (406mm)	78" high (1981mm) 71" wide (1803mm) 16" throat (406mm)	78" high (1981mm) 85" wide (2159mm) 33 ³ / ₄ " throat (857mm)
Blade Size	1 ¹ / ₄ " x .042" x 21" (31.75mm x 1.07mm x 6401mm)	1 ¹ / ₄ " x .042" x 23'8" (31.75mm x 1.07mm x 7212mm)	1 ¹ / ₄ " x .042" x 31'3" (31.75mm x 1.07mm x 9525mm)
Maximum Height Frame Full "Up"	126" (3200mm)	166" (4216mm)	166" (4216mm)
Floor Space Requirements	60" x 120" (1524mm x 3048mm)	66" x 136" (1676mm x 3454mm)	94" x 174 ¹ / ₂ " (2388mm x 4432mm)
Shipping Weight	4000 lb. (1818 kg.)	4600 lb. (2091 kg.)	5000 lb. (2273 kg.)
Wet Cutting System	20 gal. capacity	28 gal. capacity	28 gal. capacity
Blade Speeds, Drive and Motor HP	Blade Speeds: 80, 135, 210 fpm (1200 sfpm optional); selection by stepped pulley; "V" belt from motor; gear & pinion to blade; 5-horsepower motor. Optional blade drive; 15 hp hydraulic drive, variable speed with control panel mounted speed control.		

Packaging - Processing

Bid on Equipment

1-847-683-7720

www.bid-on-equipment.com