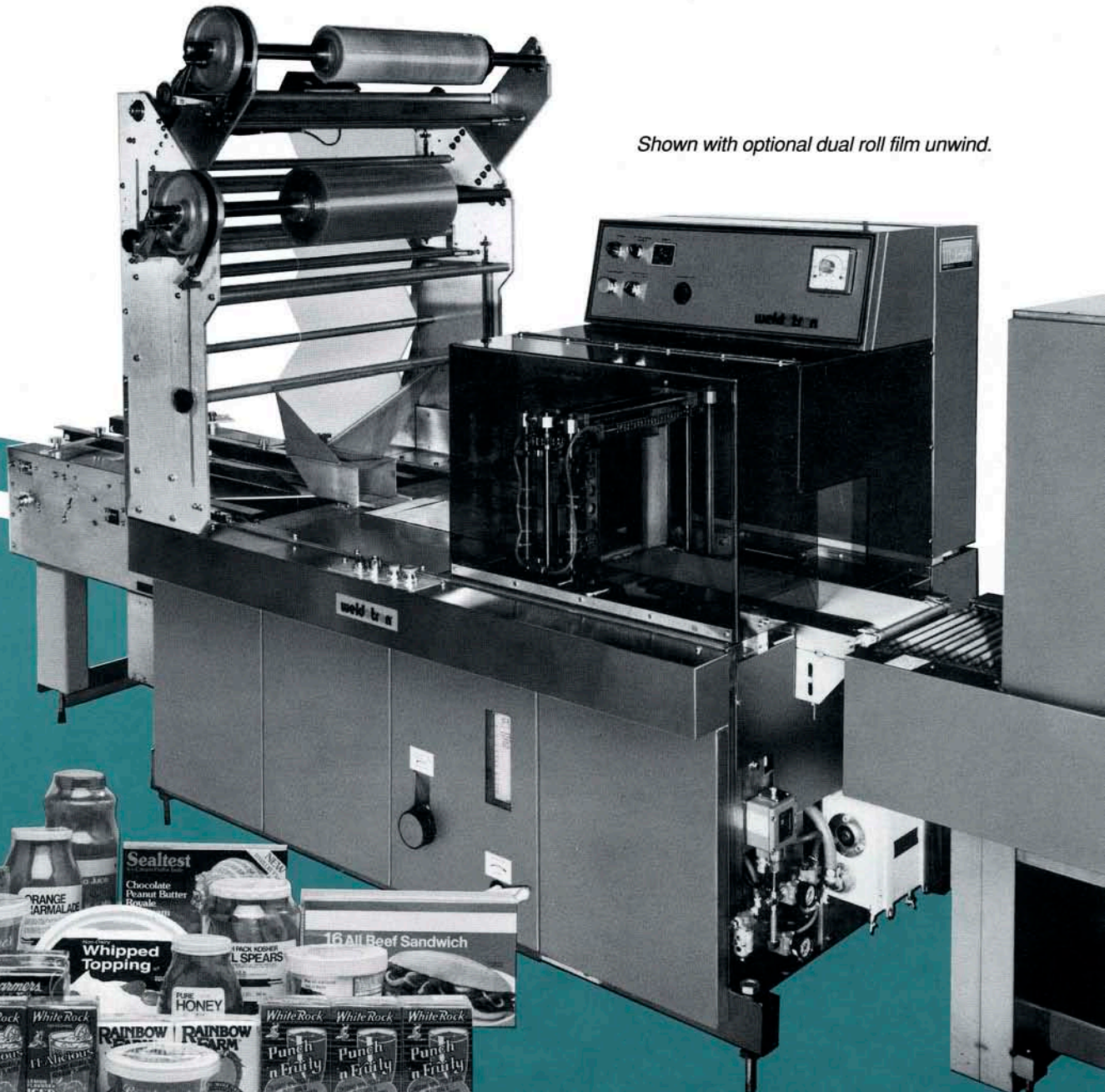




HIGH SPEED AUTOMATIC SHRINK PACKAGING SYSTEMS WITH VERTICAL CROSS SEALING SYSTEM FOR HIGH PROFILE PRODUCTS

The models 1604/1664 are high speed, form-fill-seal shrink packaging systems designed to overwrap high profile products at speeds to 80 packages per minute. The model 1604 is constructed of heavy duty carbon steel while the 1664 features stainless steel construction and carries USDA certification. Both

models operate on a continuous motion basis for smooth product transfer at high speeds and feature a unique vertical cross sealing system that enables tall products to be wrapped in the upright position. The 1604/1664 also feature quick product changeover and scrapless, single wound film operation.

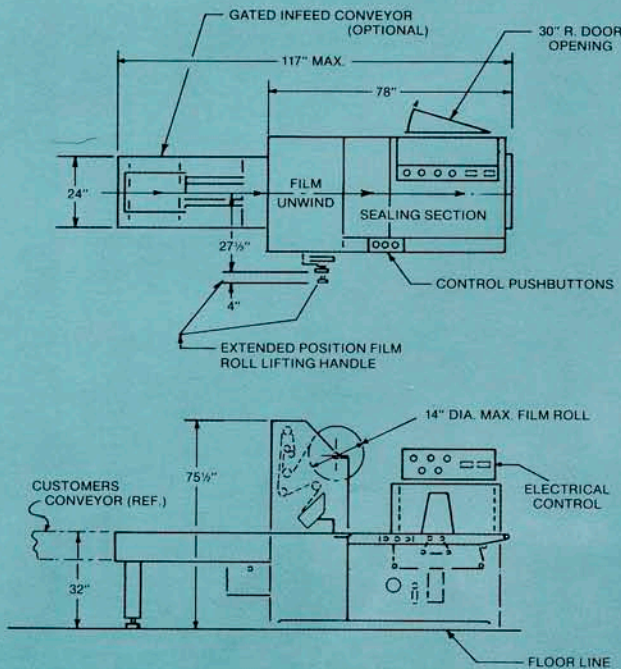


Shown with optional dual roll film unwind.

1604/1664 FEATURES:

- **HIGH SPEED OPERATION:** Smooth, continuous motion operation at speeds to 80 packages per minute.
- **UNIQUE VERTICAL SEALING SYSTEM:** Cam operated, vertical cross sealing system permits high profile product to be run in the upright position. Also produces strong, quality seals with all types of shrink films.
- **LONGITUDINAL SEAL:** Choice of thermal or static longitudinal bottom lap seal for attractive package appearance.
- **SCRAPLESS, SINGLE WOUND FILM OPERATION:** Lap sealing with single wound film eliminates scrap and reduces material cost.
- **SMOOTH, CONTINUOUS MOTION OPERATION:** Continuous motion operation provides smooth, shingle-free product transport.

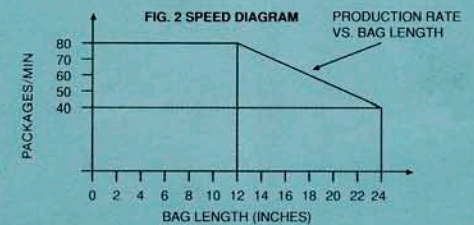
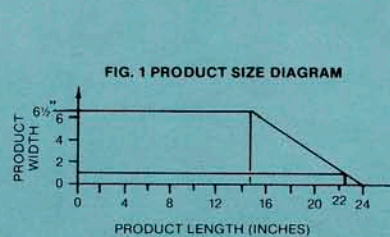
- **INTEGRATED SOLID STATE ELECTRONIC CONTROLS:** Integrated electronic control package can be easily programmed for a wide range of automatic product accumulators, collators and feeders.
- **QUICK PRODUCT SIZE CHANGOVERS:** Simple adjustment for bag length variations permits quick product size changeover.
- **MULTI-ZONED VACUUM BELT FILM TRANSPORT:** Vacuum belt conveyor with five independently controlled zones ensures smooth, high speed film travel.
- **QUICK-CHANGE FILM FORMING PLOWS:** Quick-change fixed film forming plows minimize downtime—keeps productivity high.
- **COMPACT SIZE:** Infeed and outfeed designed for limited space requirements without loss of operating performance.



1604/1664 SPECIFICATIONS

ELECTRICAL REQUIREMENTS: 230V., 60Hz., 3Ph., 20 Amps
AIR REQUIREMENTS: 13.65 SCFM
MAXIMUM PACKAGE DIMENSIONS: 9"H x 6-1/2"W, up to 24"L (See Figure #1)
PACKAGES PER MINUTE: Up to 80 (See Figure #2)
MAXIMUM FILM SPEED: 100 Per Minute
MAXIMUM FILM WIDTH: 34"
OVERALL MACHINE DIMENSIONS: 117"L x 44-1/2"W x 75-1/2"H
APPROXIMATE MACHINE WEIGHT: 3,000 lbs.

Specifications subject to change without notice.



SAFETY FEATURES:

The infeed conveyor is protected against jams and overloads by means of a torque limiting clutch. The cross seal system is protected by means of safety sensors and a unique air coupling. In the

event that any obstruction is detected, the cross seal jaws instantly retract without phasing problems. If electrical or pneumatic system fails for any reason, jaws open instantly to safe position.

OPERATION:

Product is fed into the flighted or gated infeed conveyor either manually or automatically. It is then advanced in perfect time phase into the horizontal tube of film which is formed by a special quick-change forming shoe. The film tube is of the bottom lap

type with longitudinal seal made either electrostatically or thermally. Product and film then advance by means of vacuum belt feed into the continuous motion cross seal. The completely sealed package is then discharged into the shrink tunnel.

ACCESSORIES:

• Indexing conveyor infeeds • Automatic accumulators and collators • Print registration • Perforating attachment

• Rotary hole burner • Automatic speed modulation • Additional fixed film forming plows.

weldotron®

Manufactured under one or more USA and Foreign Patents. Other patents pending.

Packaging - Processing
Bid on Equipment
 1-847-683-7720
www.bid-on-equipment.com