

Videojet Excel® Series 2000

Small Character Ink Jet Printers

Ink Jet.

Laser.

Thermal Transfer.

Labelers.

Track & Trace.

Supplies.

Parts & Service.



The Videojet Excel 2000 and 2000 Opaque ink jet printers deliver high reliability and print quality at production line speeds. Specifically designed for performance in tough environments, these printers code reliably in a variety of applications where speed, quality of code and flexibility are key factors.

Exceptional print quality

- Up to 4 lines of code with speeds up to 916 fpm (279 mpm)
- Dramatically improved print quality with Accudrop™ character generation
- Print at high line speeds without sacrificing print quality

High contrast, flexible coding

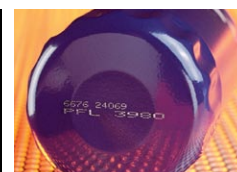
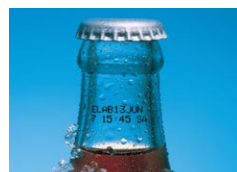
- Opaque option prints bright, highly legible codes on darker surfaces
- Delivers features such as dual expiration dates, alpha hour and month inserts, production shift timers and automatic date rollover

Superior Reliability

- Stainless steel, IP65 wash-down cabinet
- Autoflush™ system cleans printhead, nozzle and return line, eliminating daily printhead cleaning
- Hydraulic system allows for use of pigmented fluids without periodically draining the system
- Fresh ink recirculation system maintains uniform pigment distribution in ink supply with no mechanical stirring mechanism
- Automatically keeps ink at optimum condition, reducing maintenance time and cost

Enhanced standard features

- Store up to 224 messages and recall with a few simple keystrokes
- Print logos, bar codes, variable data and information supplied via the Enhanced Serial Interface



Line Speed Capability

Can print 1 to 4 lines of print at speeds of up to 916 ft./min. (278 m/min.) @10 characters per inch, single line of print

Resolution

60 dots/inch (23.6 dots/cm)

Print Density

10 characters/inch (3.9 characters/cm) with 5 x 7 matrix; matrix dependent

Font Matrix Configuration

5x5, 5x7, 6x7, 5x5 twin-line, 5x7 twin-line, 7x9, 10x16, 16x24, 5x7 tri-line, 5x5 quad-line

Bar Codes

Interleaved 2 of 5, Code 39, Code 128, EAN-8 and EAN-13 (includes UPC-A.)

Optimal Character Height

1/16 inch (1.6 mm) to more than 1/3 inch (8.4 mm)

Keyboard

66 alphanumeric and special character keys on moisture and ketone-resistant, membrane-type keyboard, security features

Display

40-character, 8-line illuminated (back-lit) LCD display

Custom Characters/Logos/Graphics

Flexible logo, graphics, and character storage. Keyboard programmable characters

Languages

U.S. English, UK English, German, French, Spanish, Portuguese, Dutch, Italian, Swedish, Danish & Finnish

Data Interface

128-character ASCII code; programmable via keyboard or RS232 at baud rates selectable up to 19.2kbps

Message Storage

Message storage capacity to 224 messages

Console Dimensions

Stainless steel
24" (610 mm) high
20" (508 mm) wide
8" (203 mm) deep

Environmental Protection

IP65

Printhead

Stainless Steel
Diameter: 1.375" (35 mm)
Length: 7.1" (180 mm)
Omni-directional set-up capability

Printhead Umbilical

20-foot (6.1 m) vinyl-covered armored conduit

Fluids/Consumption

Up to 90 million characters per quart of ink (0.95 L) depending on ink, stroke setting and adjustments

Temperature/Humidity Range

40° to 110°F (5° to 43°C)
10% to 90% RH non-condensing

Air Requirements

65 to 85 psi minimum (4.3 to 5.7 bars), depending on ink.
.7 SCFM maximum (1,189 l/hr); dry, oil-free, filtered air

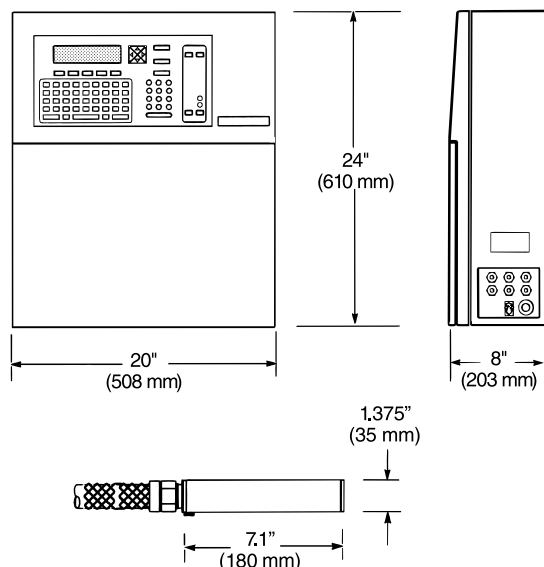
Electrical Requirements

Nominal 110 or 240 VAC at 50/60 Hz; 75 watts

Approximate Weight

Unpacked and dry: 82 lbs. (37.2 kg)
Packed and dry: 100 lbs. (45.4 kg)

Dimensions



CERTIFIED
ISO 9001
DOCUMENTED QUALITY



800-843-3610

www.videojet.com / info@videojet.com

Videojet Technologies Inc. / 1500 Mittel Blvd.

Wood Dale IL 60191-1073 / USA

Phone 630-860-7300 Fax 630-616-3623

