

Videojet Excel® DN

Small Character Ink Jet Printer

Ink Jet.

Laser.

Thermal Transfer.

Labelers.

Track & Trace.

Supplies.

Parts & Service.

The Videojet Excel® DN is ideal for customers who want to print multi-line messages at high speeds or need to print complex codes combining text, logos and even bar codes. Built with the robustness of the time-tested Excel Series printers, the Excel DN easily meets today's coding requirements, and will fulfill future needs as well.

Advanced capabilities

- Up to 8 lines of code with speeds up to 916 ft./min. (279 m/min.)
- Tall and bold codes with superior print quality at high speeds

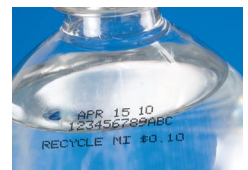
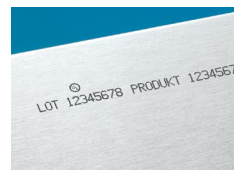
Versatile and flexible

- On-board logo capability allows creation of logos for regulatory requirements, product decoration or branding
- Utilizes Excel family of more than 135 proven fluids formulations for any application



Consistent, easy operation

- Bright backlit display for easy reading in any environment
- Compact flash cards make set-up, back up cloning and upgrading multiple units quick and easy
- Excel reliability delivers superior uptime in high throughput environments



Line Speed Capability

Can print 1 to 8 lines of print at speeds up to 916 ft./min. (279.1 m/min.) (10 characters per inch, single line of print)

Print Rate

Up to 1,833 characters per second, depending on font selections

Font Matrix Configuration

Single-line: 5x5 Accudrop™, 5x7, 6x7, 7x9, 10x16, 16x24
Twin-line: 5x5 Accudrop™, 5x7
Tri-line: 5x7
Quad-line: 5x5

Bar Codes

Interleaved Two of Five (ITF 2 of 5); UPC A; EAN 8 & 13; Code 128; EAN 128; Code 39; 2D Data Matrix

Nominal Character Height

Selectable from 1/16th inch (1.6 mm) to more than 1/3 inch (8.4 mm), depending on matrix selected

Keyboard

Membrane style with tactile feedback including 70 numeric, alphabetic, and special function keys. PC style layout, to approximate international PC convention. Keyboard is wash-down and solvent resistant.

Display

320 x 240 backlit monochrome display, 5.7" (144 mm), measured diagonally
Display is wash-down and solvent resistant

Custom Logo/Graphics

Can be created by individual user on printer or PC with optional Videojet Logo Creator software

Languages

English, Arabic, Chinese, Danish, Dutch, Finnish, French, German, Italian, Japanese, Korean, Polish, Portuguese, Spanish, Swedish, Thai, Turkish

Data Interface

Connector™ via RS232, RS485 and Ethernet with optional hardware
Optional Remote Data serial port

Message Storage

Can store up to 250 messages using CompactFlash® memory cards

Console Dimensions

Stainless steel
24" (610 mm) high
20" (508 mm) wide
7.8" (199 mm) deep

Environmental Protection

IP65 and IP54 options available

Printhead

Stainless Steel
Diameter: 2.2" (57 mm)
Length: 7.8" (199 mm)

Printhead Umbilical

Flexible PVC tubing, reinforced by rigid PVC spiral
Dimensions: Length 19.7 ft (6 m)
Diameter: 1.05 in (26.7 mm)
Bend radius: 7.0" (178 mm)

Fluids/Consumption

Wide range of formulations and colors. Up to 67.5 million characters per quart of ink, depending on ink, stroke, setting and adjustments

Temperature/Humidity Range

40° F to 110° F (4.4° C to 43.3° C)
10% to 90% RH non-condensing

Air Requirements

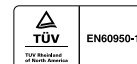
65 to 85 psi minimum (4.5 to 5.9 bars), depending on ink. 0.8 SCFM max for IP65 and 1.0 SCFM max for IP54; dry, oil-free, filtered air.

Electrical Requirements

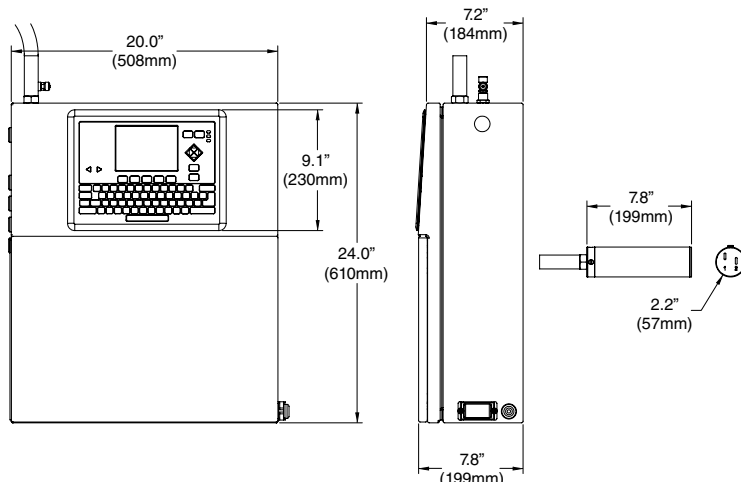
Nominal supply power 100 to 240 VAC at 50/60 Hz., 75 watts max.

Approximate Weight

Unpacked and dry: 70.0 lbs. (31.5 kg)
Packed and dry: 92.6 lbs. (42.0 kg)



Dimensions



800-843-3610

www.videojet.com / info@videojet.com

Videojet Technologies Inc. / 1500 Mittel Blvd.

Wood Dale IL 60191-1073 / USA

Phone 630-860-7300 Fax 630-616-3623

