

# Videojet® 4210

Ink Jet Addressing System

## Ink Jet.

Laser.

Thermal Transfer.

Labelers.

Track & Trace.

Supplies.

Parts & Service.



The Videojet® 4210 addressing system with highly reliable ink jet technology lets you print variable data on nearly any surface.

## Reliable ink jet technology with solvent- and water-based inks

- Typical throughput of 20,000 pieces per hour
- Excellent choice for newspapers running Total Market Coverage (TMC) applications
- Print any combination of fixed text, variable text, numbering (up to 4 independent counters), select barcodes and multiple date/time formats
- Up to (6) lines of print from a single printer utilizing (2) printheads; system can be expanded to include up to (4) printers for a total of (24) lines of print
- Versatility to print down, sideways or upside down as well as up to (1) inch away from the media
- Complete line of inks and fluids to print on a variety of coated substrates, including polywrap

## Windows®-based front end with WYSIWYG software

- Simplified setup and operation with network retrieval of data files
- Intelligent Mail® Barcode support
- PDF proofing supported

## Intelligent stacker control available

- Take advantage of postal discounts by optimizing bundle sizes based on user-definable settings
- Selectable desired stack size, minimum stack size and compensate settings
- Supports most common digital I/O controlled stackers

## Drop-in replacement for Cheshire 4000

- Simple upgrade path
- Leverage investment with existing Videojet 270g ink jet printers



**PC Controller**

2.8GHz Pentium Hewlett-Packard PC with keyboard and optical mouse; 15" (38 cm) HP flat screen monitor

**Printhead/Cable**

Compact stainless steel 1 3/8" (35 mm) diameter printhead. Two per each printer. Omni-directional capability. Vinyl covered armored conduit in 20' (6.1 m) length

**Language Versions**

English

**Character Fonts**

10 standard fonts

**Character Set**

Code Page 850 extended ASCII subset

**Font Matrix Configuration**

5x5, 5x7, 7x9, 9x9, 10x16, 16x24 single line; 5x7 and 5x7 with 10x16 twin line; 5x7 with 16x24 tri-line

**Bar Code Fonts**

Interleaved 2 of 5; Code 39; POSTNET™, Intelligent Mail® Barcode

**Print Rate**

Up to 60,000 documents per hour, depending on size of media, number of lines and character pitch

**Message Length**

Up to 500 characters per line, including spaces; up to 24 lines of information with the full system configuration

**Supported File Types**

Directly Imported: Excel spreadsheet with no formatting (.xls), MS Access database (.mdb), Dbase (.dbf), Comma delimited (.txt). With converter tool: Text1 (.tex), Text2 (.tx2), JS2 (.js2)

With Optional Converter: Fixed width fields CR/LF record, Fixed width fields fixed width record, Tab delimited, Any record delimiters and MS Excel

**Air Requirements**

2.0 SCFM at 80 PSI (5.4 bars) per printer; clean, dry, instrument quality air

**Electrical Requirements**

Nominal 120 or 240 VAC at 50/60 Hz, 75 watts (printer)

**Environmental**

Operating temperature: 40° F to 110° F (5° C - 43° C)  
Humidity range: 15% - 90% RH non-condensing

**Enhancements**

Stacker control and overhead umbilical stand

**Inks**

Supported by a full range of Videojet inks and supplies, including formulations that meet US Postal Service POSTNET and IMB specifications  
Solvent- and water-based inks available

**External Cables**

Printer Serial data cable (RS232) DB-25M (2,3,7 pinout), 1 per printhead  
Printer Tach/Cue (RJ11), 6 wire 2 outputs 1 input opto isolated, 1 per printhead  
Base Control (DB15, Encoder, Photo eye input, Base stop relay)  
Base I/O (DB-37), 5V ACT series inputs/outputs

**Internal Cables**

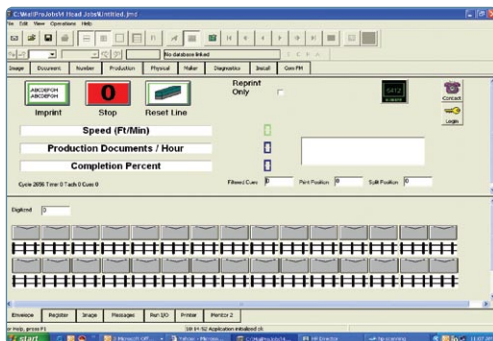
LAN, utp, RJ45  
DC Power (5,12, 24V) MolexDualRow-6  
RS232 (DB-9)  
LightPole MolexInline-6

**Cabinet Dimensions**

39" x 24" x 31" (99.1 x 61.0 x 78.7 cm)

**Approximate Weight**

PC controller cabinet, 66lbs (30 kg); expected total system configuration, approximately 100 lbs (45.4 kg)



800-843-3610

[www.videojet.com](http://www.videojet.com) / [info@videojet.com](mailto:info@videojet.com)

Videojet Technologies Inc. / 1500 Mittel Blvd.

Wood Dale IL 60191-1073 / USA

Phone 630-860-7300 Fax 630-616-3623

