

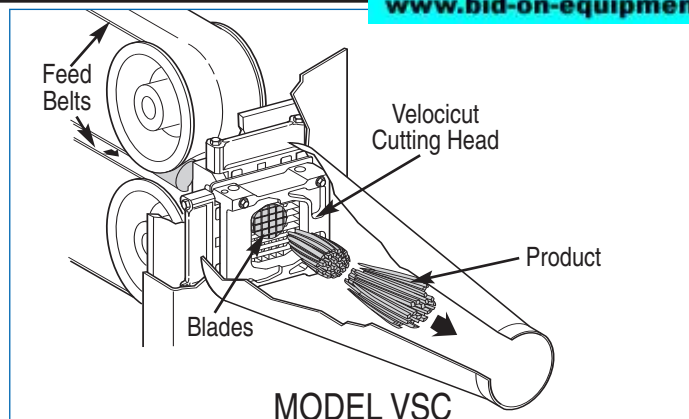
URSCHEL® Model VSC

Cuts Segments, Slabs, and Strips

Packaging - Processing
Bid on Equipment

1-847-683-7720

www.bid-on-equipment.com



SPECIFICATIONS

Length:116.48" (2959 mm)
 Width:32.61" (828 mm)
 Height:54.81" (1392 mm)
 Net Weight:1028 lb (466 kg)
 Motor: 3 HP (1.5 kW), totally enclosed, fan-cooled, variable speed
or 5 HP (3.7 kW), totally enclosed, fan-cooled

APPLICATIONS

The patented§ Urschel Model VSC produces segments, slabs, and square or rectangular strips from many food products such as carrots, pickles, zucchini, potatoes. The Model VSC features an available variable speed drive, hinged access panel, quick changeover of a wide variety of cutting heads, and simplified design for easy cleanup and maintenance. Maximum input product size is 4" (101.6 mm) in diameter, and the machine easily adapts to automated belt feeding.

The machine can be sold equipped with a feed pan and chute for hand-fed operations. For added versatility, several different cutting heads are available including the standard head, slab cutting head, and the patented§§ Velocicut® cutting head. Consult your local Urschel sales representative for the cutting head best-suited for your application.

OPERATING PRINCIPLE

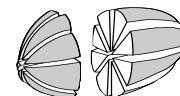
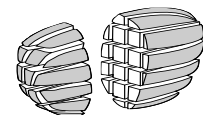
The Model VSC consists of two conveyor belts running at identical velocities mounted in a frame with one belt above the other. Sufficient clearance is provided between the belts to captivate and form themselves around the product being cut. A feed pan and a feed chute are mounted at the entry end of the conveyor belts. Product delivered to the feed pan opening, slides down the feed chute into the conveyor belts and accelerates to belt speed. Product exits the belts at the opposite end of the machine with sufficient velocity to carry it through the knives

and into the discharge cone. Belts, belt slides and pulleys are designed to keep product in the center of the belts. A small stream of water provides lubrication to the belts and cutting parts. The Model VSC is also easily adaptable to automated belt feeding.

TYPES OF CUTS

SQUARE STRIPS

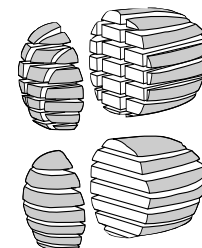
- | | |
|----------------|-----------------|
| .156" (4.0 mm) | .375" (9.5 mm) |
| .188" (4.8 mm) | .394" (10.0 mm) |
| .218" (5.5 mm) | .406" (10.3 mm) |
| .250" (6.4 mm) | .438" (11.1 mm) |
| .276" (7.0 mm) | .469" (11.9 mm) |
| .281" (7.1 mm) | .472" (12.0 mm) |
| .285" (7.2 mm) | .500" (12.7 mm) |
| .290" (7.4 mm) | .512" (13.0 mm) |
| .294" (7.5 mm) | .560" (14.2 mm) |
| .297" (7.5 mm) | .563" (14.3 mm) |
| .300" (7.6 mm) | .591" (15.0 mm) |
| .305" (7.7 mm) | .625" (15.9 mm) |
| .313" (8.0 mm) | .750" (19.1 mm) |
| .330" (8.4 mm) | .875" (22.2 mm) |
| .344" (8.7 mm) | 1" (25 mm) |



SEGMENT CUTS:
 3, 4, 5, 6, 8, 10, or 12

RECTANGULAR STRIPS

- | |
|-------------------------------|
| .281 x .406" (7.1 x 10.3 mm) |
| .281 x .594" (7.1 x 15.1 mm) |
| .290 x .313" (7.4 x 8.0 mm) |
| .313 x .375" (8.0 x 9.5 mm) |
| .313 x .750" (9.5 x 19.1 mm) |
| .315 x .385" (8.0 x 9.8 mm) |
| .330 x .395" (8.4 x 10.0 mm) |
| .344 x .469" (8.7 x 11.9 mm) |
| .375 x .750" (9.5 x 19.1 mm) |
| .438 x .750" (11.1 x 19.1 mm) |
| .438 x .875" (11.1 x 22.2 mm) |



SLABS: Crinkle and flat slab cut sizes are available to meet your product requirements.

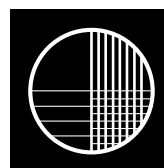
Other sizes also available when using the Velocicut cutting head.

© Urschel and Velocicut are registered trademarks of Urschel Laboratories, Inc.

§The Model VSC is protected by U.S. Patent No. 5044240 and European Patent No. 412835.

Foreign and other patents pending.

§§The Velocicut is protected by U.S. Patent No. 5343623 and European Patent No. EP0570153.

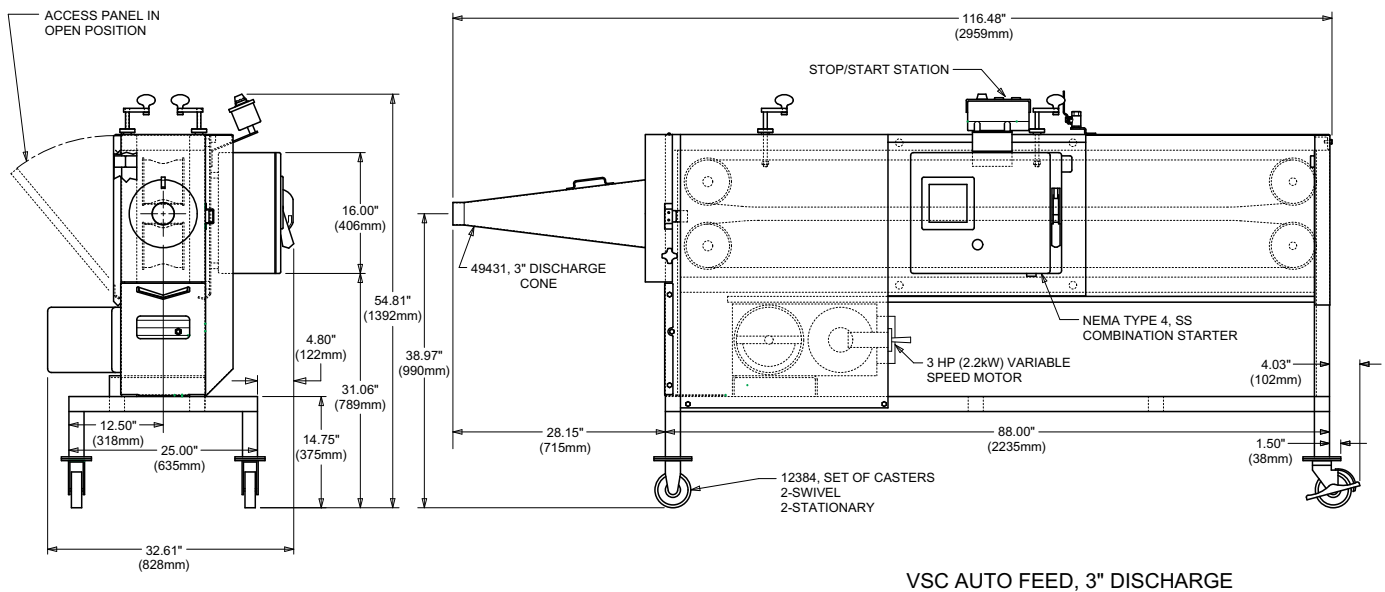
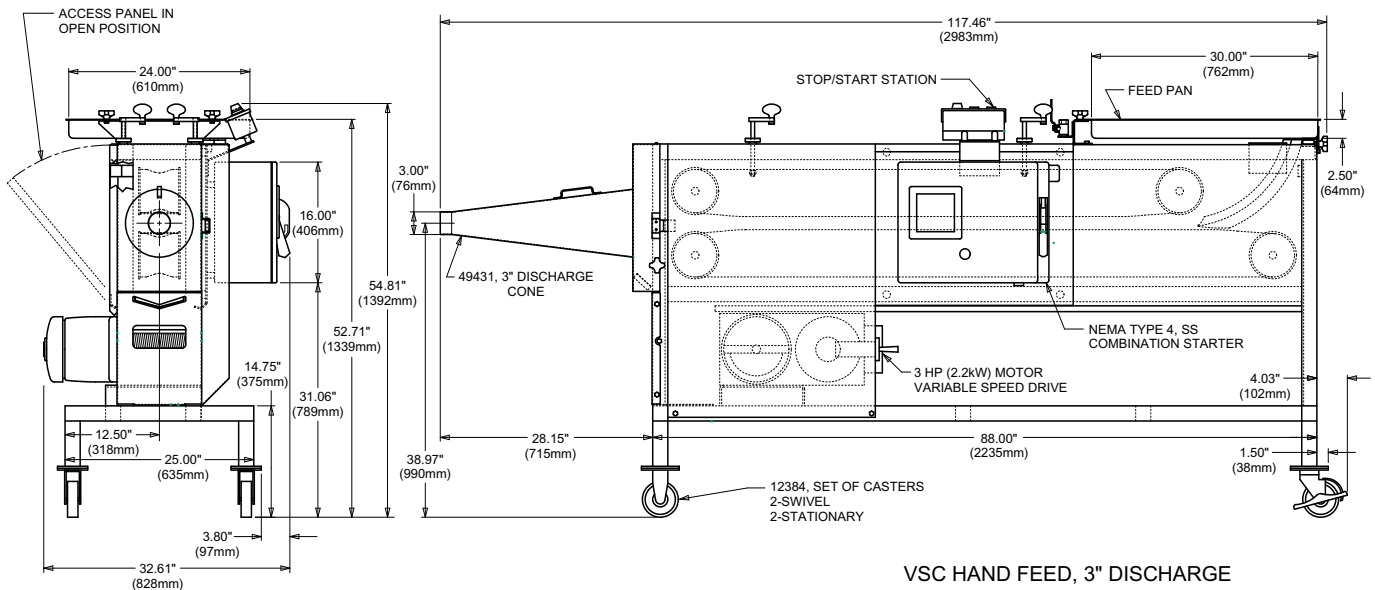


URSCHEL
LABORATORIES INCORPORATED

2503 Calumet Avenue, P.O. Box 2200
 Valparaiso, Indiana 46384-2200 U.S.A.
 219/464-4811 Fax: 219/462-3879
<http://www.urschel.com>
 E-mail: info@urschel.com

**Designers and manufacturers of
 precision size reduction equipment.**

Model VSC Dimensional Drawing



Your Product Can Be Test Cut

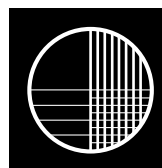
Urschel Laboratories has a complete network of test facilities and experienced service and sales representatives around the world ready to work for you on any size reduction application. Contact your local Urschel Laboratories' representative to schedule a comprehensive, no-obligation test today at www.urschel.com.

@ Urschel and Velocicut are registered trademarks of Urschel Laboratories, Inc.

§ The Model VSC is protected by U.S. Patent No. 5044240 and European Patent No. 412835. Foreign and other patents pending.

§§ The Velocicut is protected by U.S. Patent No. 5343623 and European Patent No. EP0570153.

1873 JUNE 03 (s.s. 1540)



URSCHEL
LABORATORIES INCORPORATED

2503 Calumet Avenue, P.O. Box 2200
 Valparaiso, Indiana 46384-2200 U.S.A.
 219/464-4811 Fax: 219/462-3879
<http://www.urschel.com>
 E-mail: info@urschel.com

**Designers and manufacturers of
 precision size reduction equipment.**