

# Urschel® Model SL-A

## Uniformly Dices, Strip Cuts, or Slices

Packaging - Processing  
**Bid on Equipment**  
1-847-683-7720  
[www.bid-on-equipment.com](http://www.bid-on-equipment.com)



### SPECIFICATIONS

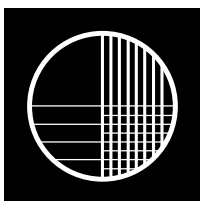
Length: ..... 67.57" (1716 mm)  
Width: ..... 52.87" (1343 mm)  
Height: ..... 64.63" (1642 mm)  
Net Weight: ..... 1270 lb (576 kg)  
Dicer Motor: ..... 2 HP (1.5 kW)  
Slicer Motor: ..... 2 HP (1.5 kW)

### APPLICATIONS

The Urschel Model SL-A is designed for cutting cooked or raw frozen-tempered meats such as beef, ham, mutton, chicken, and liver, as well as onions and cabbage. The machine features continuous operation for uninterrupted production, and simplified design for easy cleanup and maintenance.

Maximum infeed of firm products on a Model SL-A is 4" (101.6 mm) in any dimension.

*If your product application is not mentioned on this page, contact your local Urschel representative to determine the most effective solution to your size reduction needs.*



## URSCHEL

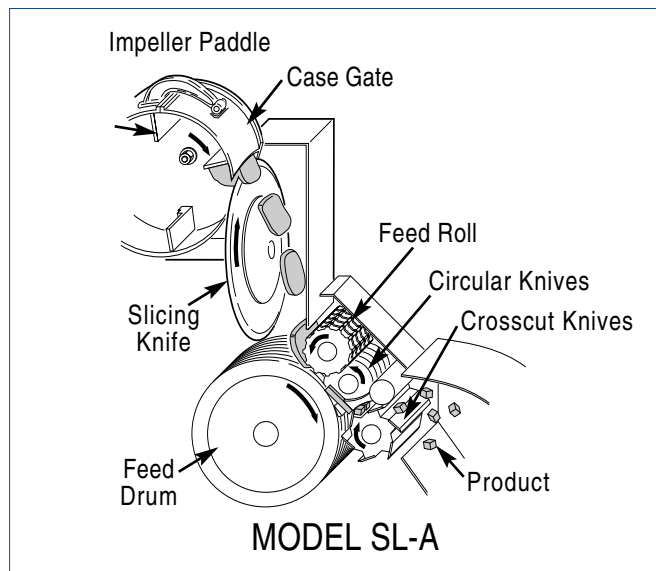
LABORATORIES INCORPORATED

2503 Calumet Avenue, P.O. Box 2200  
Valparaiso, Indiana 46384-2200 U.S.A.  
219/464-4811 Fax: 219/462-3879  
<http://www.urschel.com>  
E-mail: [info@urschel.com](mailto:info@urschel.com)

**Designers and manufacturers of  
precision size reduction equipment.**

©Urschel is a registered trademark of Urschel Laboratories, Inc.

L2016 NOV 2005 (s.s. 1763)



### OPERATING PRINCIPLE

Product is delivered to the feed hopper and falls into a rotating impeller. Centrifugal force holds the product against the inside of the slice case as the impeller paddles carry the product past the slicing knife. An adjustable case gate at the top of the case allows the product to move outward across the edge of the slicing knife. The distance between the end of the case gate and the slicing knife edge determines the slice thickness.

Slices then drop onto a revolving feed drum. The drum and an opposing feed roll transfer the slices to the circular knife spindle where the product is cut into strips. The strips then move directly into the rotating crosscut knives. The crosscut knives produce the final cut of cubes or rectangular pieces, and discharge the finished cut.

### TYPES OF CUTS

SLICES: Up to 1/2" (12.7 mm)

#### STRIP CUTS & DICES:

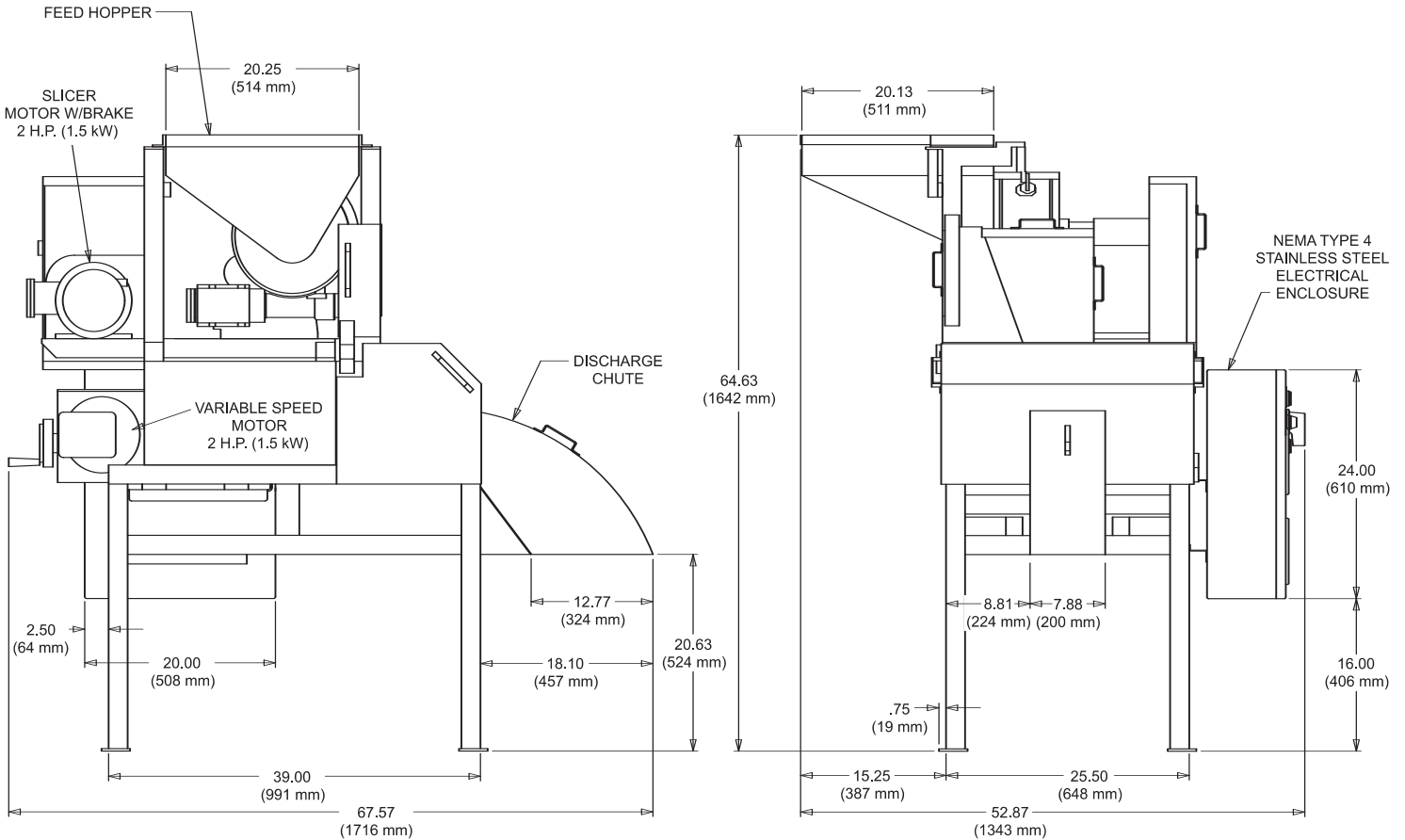
Crosscut Knife Cuts: 1/8 to 3" (3.2 to 76.2 mm)

Circular Knife Cuts: 1/8 to 2" (3.2 to 50.8 mm)

product to travel past the slicing knife determining product thickness.

# Urschel® Model SL-A Dimensional Drawing

**Packaging - Processing**  
**Bid on Equipment**  
 1-847-683-7720  
[www.bid-on-equipment.com](http://www.bid-on-equipment.com)



## Your Product Can Be Test Cut

Urschel Laboratories has a complete network of test facilities and experienced service and sales representatives around the world ready to work for you on any size reduction application. Contact your local Urschel Laboratories' representative to schedule a comprehensive, no-obligation test today at [www.urschel.com](http://www.urschel.com)



## URSCHTEL

**LABORATORIES INCORPORATED**

2503 Calumet Avenue, P.O. Box 2200  
 Valparaiso, Indiana 46384-2200 U.S.A.  
 219/464-4811 Fax: 219/462-3879

<http://www.urschel.com>

E-mail: [info@urschel.com](mailto:info@urschel.com)

**Designers and manufacturers of  
 precision size reduction equipment.**

©Urschel is a registered trademark of Urschel Laboratories, Inc.