

Urschel® Model RA-HD

Uniformly Dice, Strip Cut, or Slice Heavy Duty Applications

NEW!

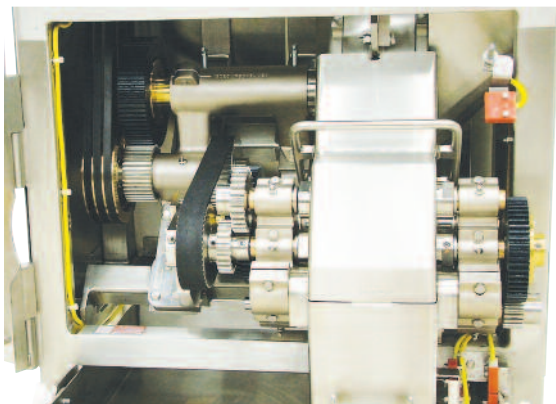


SPECIFICATIONS

Length: 45.38" (1153 mm)
Width: 45.91" (1166 mm)
Height: 71.54" (1817 mm)
Net Weight: 840 lb (380 kg)
Motor: 10 HP (7.5 kW)

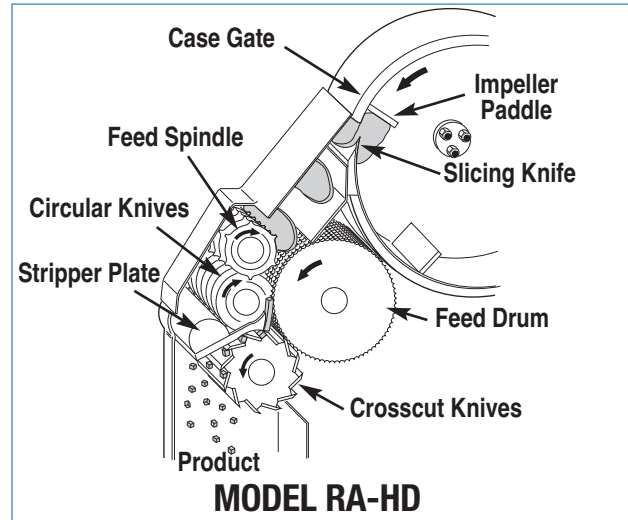
APPLICATIONS

The new Model RA-HD is a heavy duty hybrid version of the Models RA-A and RA-D. The RA-HD uses many existing parts from both machines. These parts are combined with a larger motor, a new heavy duty drive configuration, and associated components to promote load distribution absorption and reduce load stress. The new outboard bearing reinforces the drive components to allow increased feed rates. Additional features include a hinged access panel with a delayed access knob to ease sanitation and maintenance. The Model RA-HD produces a wide range of dices and strip cuts from fruits, vegetables, products for relish, nuts, cheese, and processed meats. Maximum input product is 3-1/2" (88.9 mm) in any dimension. The Model RA-HD features continuous operation for uninterrupted production and simplified design for easy cleanup and maintenance.



Interior of the RA-HD heavy duty hybrid.

If your product application is not mentioned on this page, [contact your local Urschel representative](#) to determine the most effective solution to your size reduction needs.



OPERATING PRINCIPLE

Product delivered to the feed hopper continues into a rotating impeller. Centrifugal force holds the product against the inside of the slice case as the impeller paddles carry the product past the slicing knife. An adjustable case gate at the front of the case allows the product to move forward across the edge of the slicing knife. The opening between the end of the case gate and the slicing knife edge determines the slice thickness. Slices then drop onto a revolving feed drum. The drum and an opposing feed spindle transfer the slices to the circular knife spindle where the product is cut into strips. The strips then move directly into the rotating crosscut knives producing cubes or rectangular pieces of predetermined size.

TYPES OF CUTS

DICES: A slicing knife, circular knife spindle, and crosscut knife spindle are used for dicing. Changing the size of the cubes is done by using the required cutting spindles and adjusting the slice thickness.

Slice thickness: 1/16 to 3/8" (1.6 to 9.5 mm)

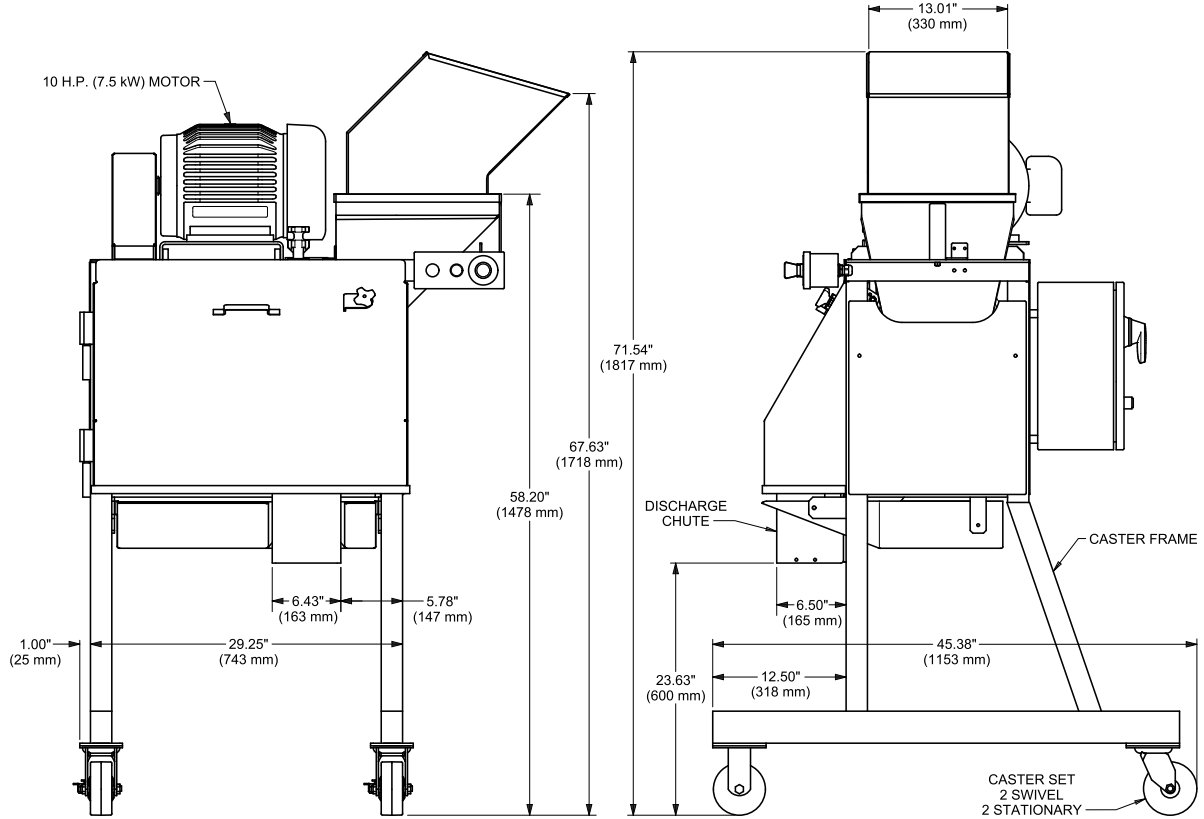
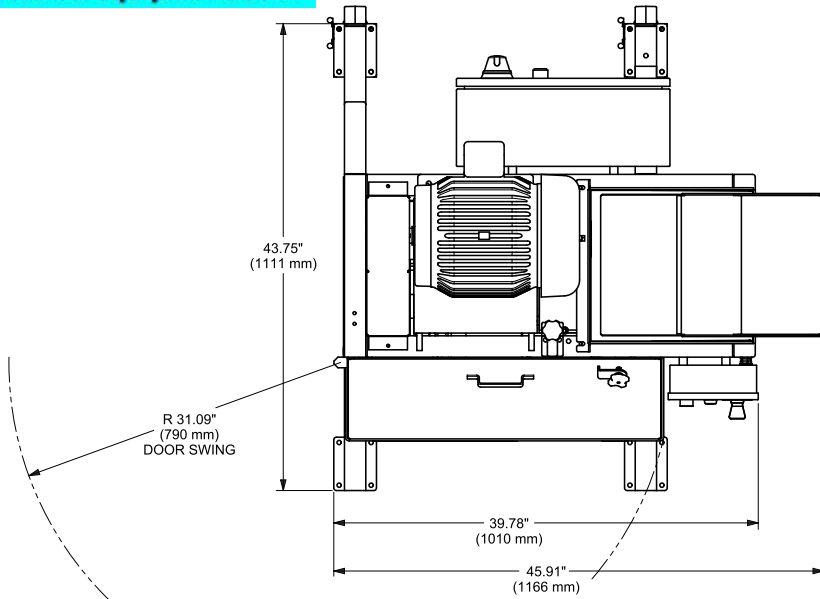
Circular Knife Cuts: 1/8 to 1" (3.2 to 25.4 mm)

Crosscut Knife Cuts: .05 to 3" (1.3 to 76.2 mm)

STRIP CUTS: Removal of crosscut knife spindle and shaft will enable the user of the RA-HD to produce strips of different lengths as determined by incoming product size. A circular spindle change may also be required.

Packaging - Processing
Bid on Equipment
1-847-683-7720
www.bid-on-equipment.com

Urschel® Model RA-HD Dimensional Drawing



Your Product Can Be Test Cut

Urschel Laboratories has a complete network of test facilities and experienced service and sales representatives around the world ready to work for you on any size reduction application. Contact your local Urschel Laboratories' representative to schedule a comprehensive, no-obligation test today at www.urschel.com



URSCHEL

LABORATORIES INCORPORATED

2503 Calumet Avenue, P.O. Box 2200
Valparaiso, Indiana 46384-2200 U.S.A.
219/464-4811 Fax: 219/462-3879

<http://www.urschel.com>
E-mail: info@urschel.com

**Designers and manufacturers of
precision size reduction equipment.**