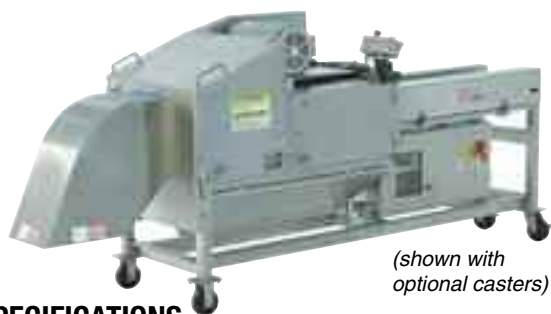


# Urschel® Model M6 Dicer

## New Versatile Dicer/Strip Cutter/Shredder

Packaging - Processing  
**Bid on Equipment**  
1-847-683-7720  
www.bid-on-equipment.com



### SPECIFICATIONS

Length: ..... 119.03" (3023 mm)  
Width: ..... 33.48" (850 mm)  
Height: ..... 50.37" (1280 mm)  
Net Weight: ..... 1642 lb (745 kg)  
Motor: ..... 5 or 7.5 HP (3.7 or 5.6 kW)

### APPLICATIONS

The new two-dimensional cutter, **patented** Urschel Model M6, is a versatile machine designed for dicing, strip cutting, or shredding a variety of products through a wide range of sizes from product of a predetermined thickness. Ideally suited for cutting frozen-tempered, fresh-chilled, or hot cooked beef, pork, or poultry in addition to leafy vegetable products. The Model M6 operates continuously at high production capacities, and is designed for easy cleanup and maintenance.

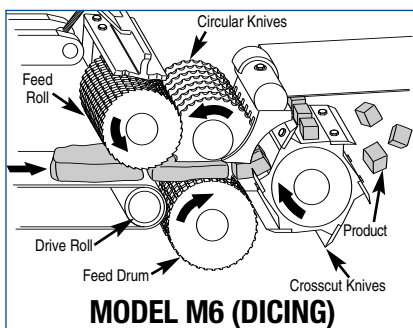
Key components promote increased sanitation incorporated in an ergonomic, practical design:

- Hinged access panels
- Stainless steel motor
- Solid bar and angle frame design
- Streamlined product feed with two pivoting product guides
- Integrated electrical enclosure
- Convenient operator stop/start station

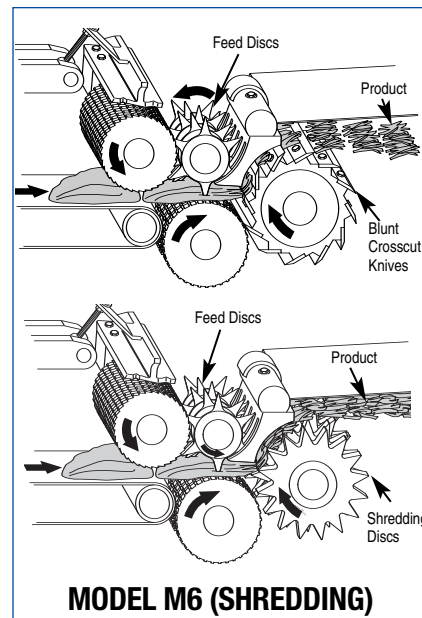
### OPERATING PRINCIPLE

#### DICING/STRIP CUTTING:

Product is delivered onto a high speed feed belt. This belt carries the product to the dicing unit. Product is pinched between a feed roll and the drive roll at the end of the feed belt. The feed roll, which is spring loaded and adjustable, allows product of varying thicknesses to move through the dicing unit without being crushed. Product is forced into circular knives which run in narrow grooves in the rotating feed drum. The resulting strips are then removed from the circular knives by a stripper plate which also acts as a shear edge for the crosscut knives. The strips of product move directly into the rotating crosscut knives producing cubes or rectangular pieces of predetermined size.



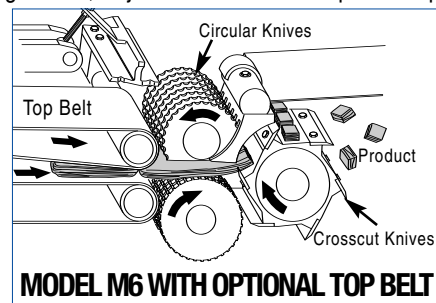
**SHREDDING:** Due to application differences in product temperature and texture of your specific product, a no-cost product test in our Product Testing Facility is strongly recommended. For more information on shredding set-ups regarding your application, contact your local Urschel representative. Product is delivered onto a high speed feed belt. This belt carries the product to the feed roll. Product is pinched between the feed roll and the drive roll at the end of the feed belt. The feed roll, which is spring loaded and adjustable, allows product of varying thicknesses to move through the shredding set-up while intentionally compressing the product. Product is forced into feed discs and removed from the feed discs by the stripper plate, which also acts as a shear edge for the shredding discs or blunt knives. The product then moves directly into the shredding discs or blunt knives producing desired shreds.



#### LEAFY PRODUCTS:

Product is delivered to a high speed conveyor belt which carries the product to the dicing unit. Depending on the feed configuration, product is compressed by a spring-loaded, adjustable feed roll or optional top belt and forced into circular knives which run in narrow grooves in the rotating feed drum.

As strips that have been cut by the circular knives move through the dicing unit, they are removed from between the circular knives by a stripper plate that also serves as a shear edge for the crosscut knives. The product moving past the stripper plate is then cut by the crosscut knives completing the square or rectangular shape and discharges through the discharge chute.



### TYPES OF CUTS

**DICES:** Many sizes of cuts are possible by combining the various selections of circular knife spacings with different crosscut knife spindles.

Circular knives: 3/16 to 1-1/2" (4.8 to 38 mm)

Crosscut knives: 1/8 to 3" (3.2 to 76.2 mm) standard sizes, up to 5.66" (144 mm) available with alternate gearing.

**STRIP CUTS:** Strip cuts can be made by removing the crosscut knife spindle from the machine. The length and thickness of the strips will depend upon the size of the original product.

**SHREDS:** Many types available. Due to variables in applications, it is highly recommended that processors work with Urschel Laboratories to achieve optimum results.

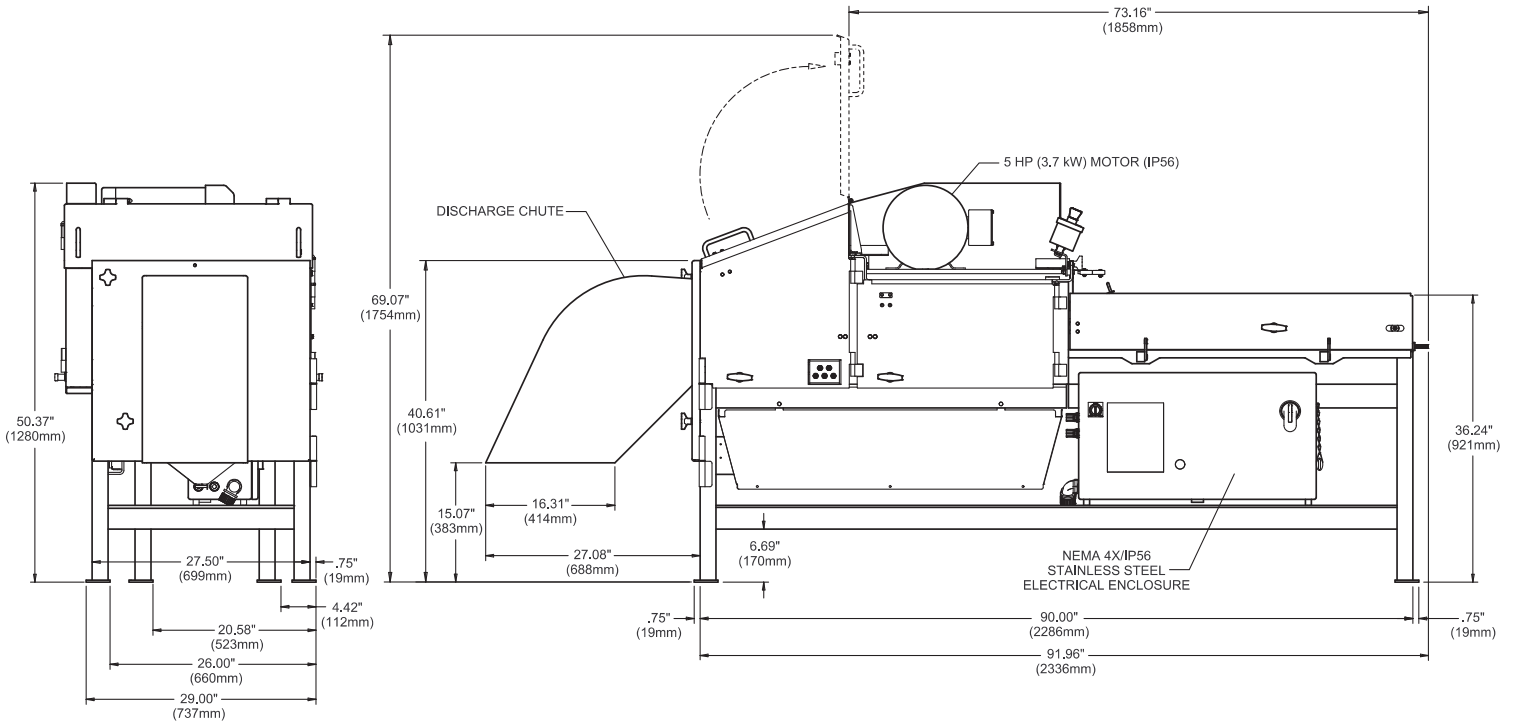
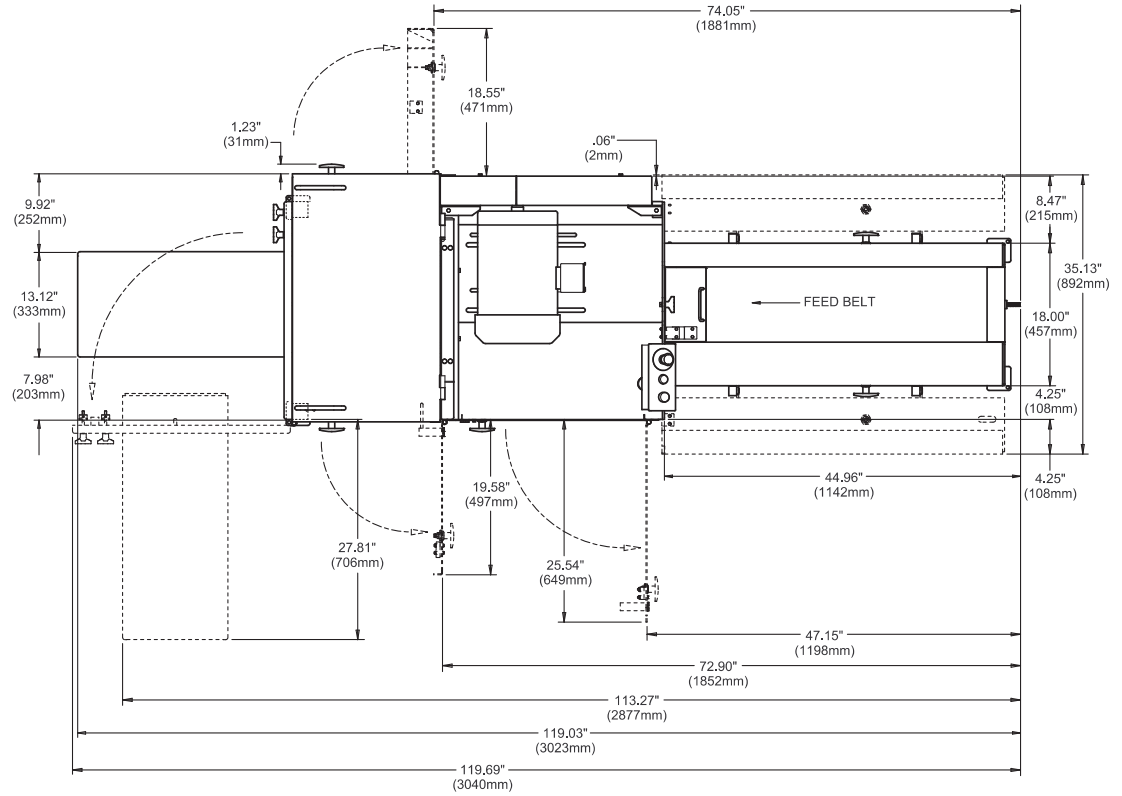


**Designers and manufacturers of precision size reduction equipment.**

U.S. Patent no. 5129299. Foreign patents pending.  
©Urschel is a registered trademark of Urschel Laboratories, Inc.

L2096 DEC 2006 (s.s. L2057)

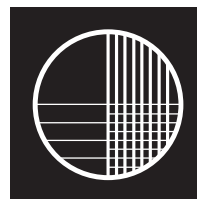
# Urschel® Model M6 Dimensional Drawing



## Your Product Can Be Test Cut

Urschel Laboratories has a complete network of test facilities and experienced service and sales representatives around the world ready to work for you on any size reduction application. Contact your local Urschel Laboratories' representative to schedule a comprehensive, no-obligation test today at [www.urschel.com](http://www.urschel.com)

§U.S. Patent no. 5129299. Foreign patents pending.  
 ©Urschel is a registered trademark of Urschel Laboratories, Inc.  
 L2096 DEC 2006 (s.s. L2057)



## URSCHEL

**LABORATORIES INCORPORATED**

2503 Calumet Avenue, P.O. Box 2200  
 Valparaiso, Indiana 46384-2200 U.S.A.  
 219/464-4811 Fax: 219/462-3879  
<http://www.urschel.com>  
 E-mail: [info@urschel.com](mailto:info@urschel.com)

**Designers and manufacturers of  
 precision size reduction equipment.**