

Urschel® Model L-A

Uniformly Dices or Strip Cuts

Packaging - Processing
Bid on Equipment
1-847-683-7720
www.bid-on-equipment.com



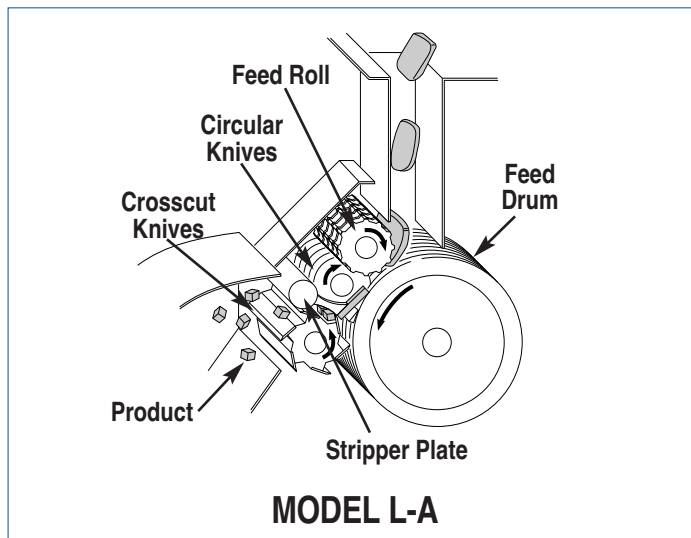
SPECIFICATIONS

Length: 67.28" (1709 mm)
Width: 38.04" (966 mm)
Height: 59.58" (1513 mm)
Net Weight: 630 lb (286 kg)
Motor: 2 HP (1.5 kW)

APPLICATIONS

The Urschel Model L-A is ideally suited for dicing chicken and turkey, celery, fresh or brined peppers, mushrooms, and citrus peel. The machine features continuous operation for uninterrupted production, and simplified design for easy cleanup and maintenance.

Maximum infeed should not exceed 1/2" (12.7 mm) in thickness.



OPERATING PRINCIPLE

Product delivered to an opening in the feed pan falls onto the outside surface of a feed drum. A feed roll, located over the feed drum is adjustable to suit product thickness. This feed roll meshes with the circular knives to insure a positive transfer of product to the knives. The product is held flat between the drum and roll and forced into the rotating circular knives which cut strips from it. The circular knives engage slots in the surface of the large feed drum, creating clean cutting and separation of strips. The strip cut product is removed from the circular knives by a stripper plate which also acts as a shear edge for the crosscut knives. Product then moves into the crosscut knives for the second, and final cut. The crosscut action also discharges product.

TYPES OF CUTS

DICES

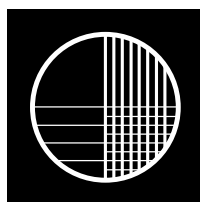
Circular Knife Cuts: 1/8 to 2" (3.2 to 50.8 mm)

Crosscut Knife Cuts: 1/8 to 3" (3.2 to 76.2 mm)

STRIP CUTS

Strip cuts can be made by removing the crosscut knives from the machine.

If your product application is not mentioned on this page, [contact your local Urschel representative](#) to determine the most effective solution to your size reduction needs.



URSCHEL

LABORATORIES INCORPORATED

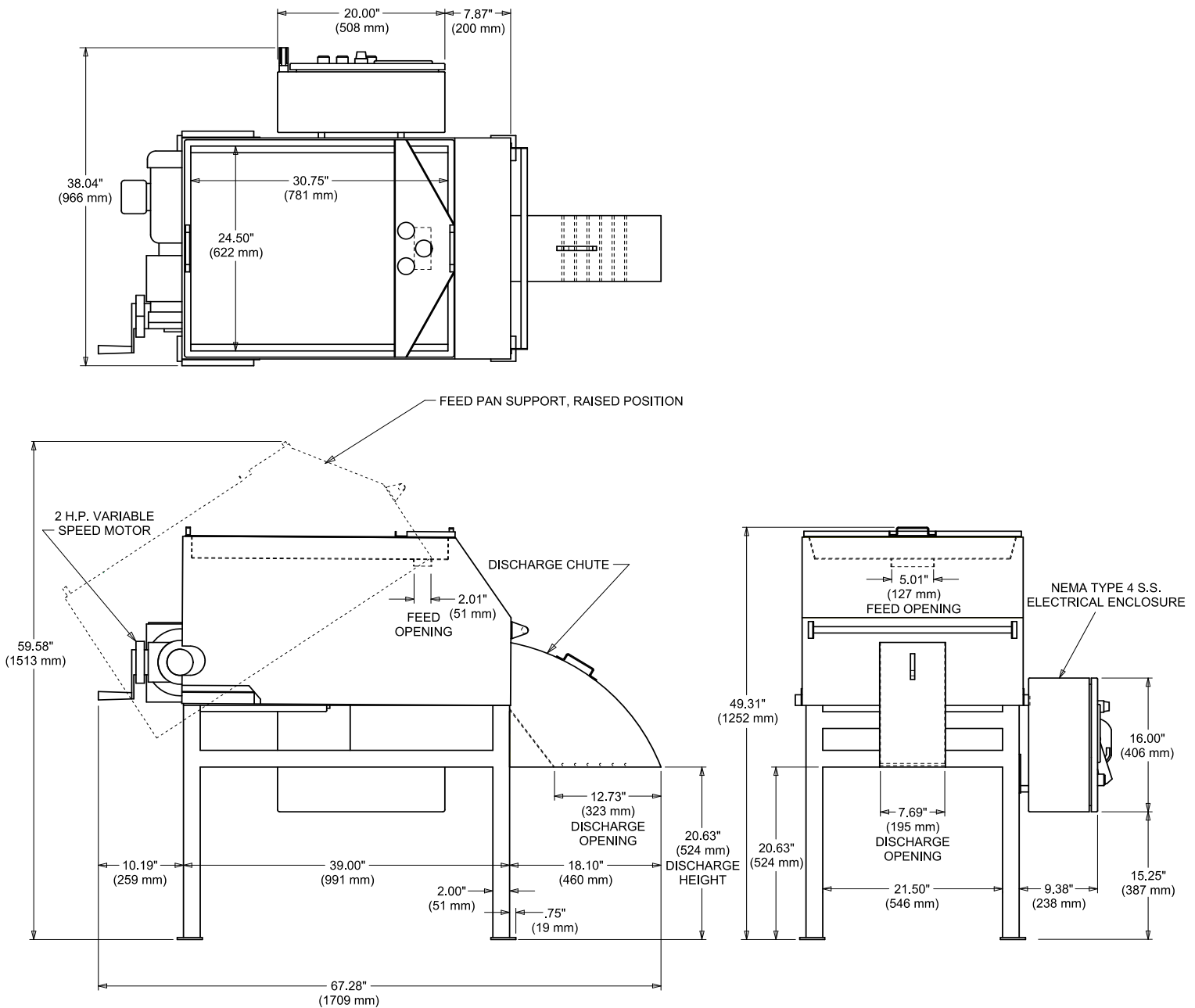
2503 Calumet Avenue, P.O. Box 2200
Valparaiso, Indiana 46384-2200 U.S.A.
219/464-4811 Fax: 219/462-3879
<http://www.urschel.com>
E-mail: info@urschel.com

**Designers and manufacturers of
precision size reduction equipment.**

©Urschel is a registered trademark of Urschel Laboratories, Inc.

Urschel® Model L-A Dimensional Drawing

Packaging - Processing
Bid on Equipment
 1-847-683-7720
www.bid-on-equipment.com



Your Product Can Be Test Cut

Urschel Laboratories has a complete network of test facilities and experienced service and sales representatives around the world ready to work for you on any size reduction application. Contact your local Urschel Laboratories' representative to schedule a comprehensive, no-obligation test today at www.urschel.com



URSCHEL LABORATORIES INCORPORATED

2503 Calumet Avenue, P.O. Box 2200
 Valparaiso, Indiana 46384-2200 U.S.A.
 219/464-4811 Fax: 219/462-3879
<http://www.urschel.com>
 E-mail: info@urschel.com

**Designers and manufacturers of
precision size reduction equipment.**

©Urschel is a registered trademark of Urschel Laboratories, Inc.