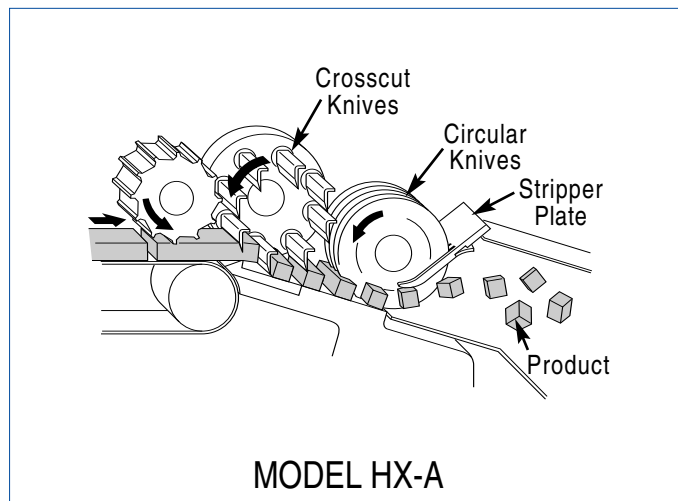


Urschel® Model HX-A

Belt Fed Dicer & Strip Cutter

Packaging - Processing
Bid on Equipment
1-847-683-7720
www.bid-on-equipment.com



SPECIFICATIONS

Length: 83.83" (2129 mm)
Width: 30.11" (765 mm)
Height: 52.82" (1342 mm)
Net Weight: 630 lb (286 kg)
Motor: 2 HP (1.5 kW)

APPLICATIONS

The Urschel Model HX-A is ideally suited for cutting soft or fragile products including cooked or frozen-tempered beef, eggplant, table-ready meats, onions, peaches, pears, pineapple, and cooked, deboned poultry. Rapid changes in product movement are avoided, creating a gentle, high speed cut without crushing. The machine features continuous operation for uninterrupted production, and simplified design for easy cleanup and maintenance.

Maximum infeed product entering the Model HX-A should not exceed 1-1/8" (28 mm) in thickness.

OPERATING PRINCIPLE

Product is delivered to a high speed conveyor belt which carries the product to the dicing unit where strips are produced by the crosscut knife spindle. These strips then enter the circular knives to complete the second dimension. Rotation of the circular knife spindle combined with the stripper plate, gently removes cut product from between the knives, and discharges the final product.

TYPES OF CUTS

CROSSCUT KNIFE CUTS: 5/8" (15.9 mm), 3/4" (19.1 mm), 13/16" (20.1 mm), 29/32" (23 mm), 1-1/4" (31.8 mm), 1-1/2" (38.1mm). *Additional sizes available. Consult your local Urschel sales representative.*

CIRCULAR KNIFE CUTS: 3/16" (4.8 mm), 1/4" (6.4 mm), 3/8" (9.5 mm), 1/2" (12.7 mm), 5/8" (15.9 mm), 3/4" (19.1 mm), 1" (25.4 mm), 1-1/8" (28.6 mm), 1-1/2" (38.1 mm)

If your product application is not mentioned on this page, [contact your local Urschel representative](#) to determine the most effective solution to your size reduction needs.

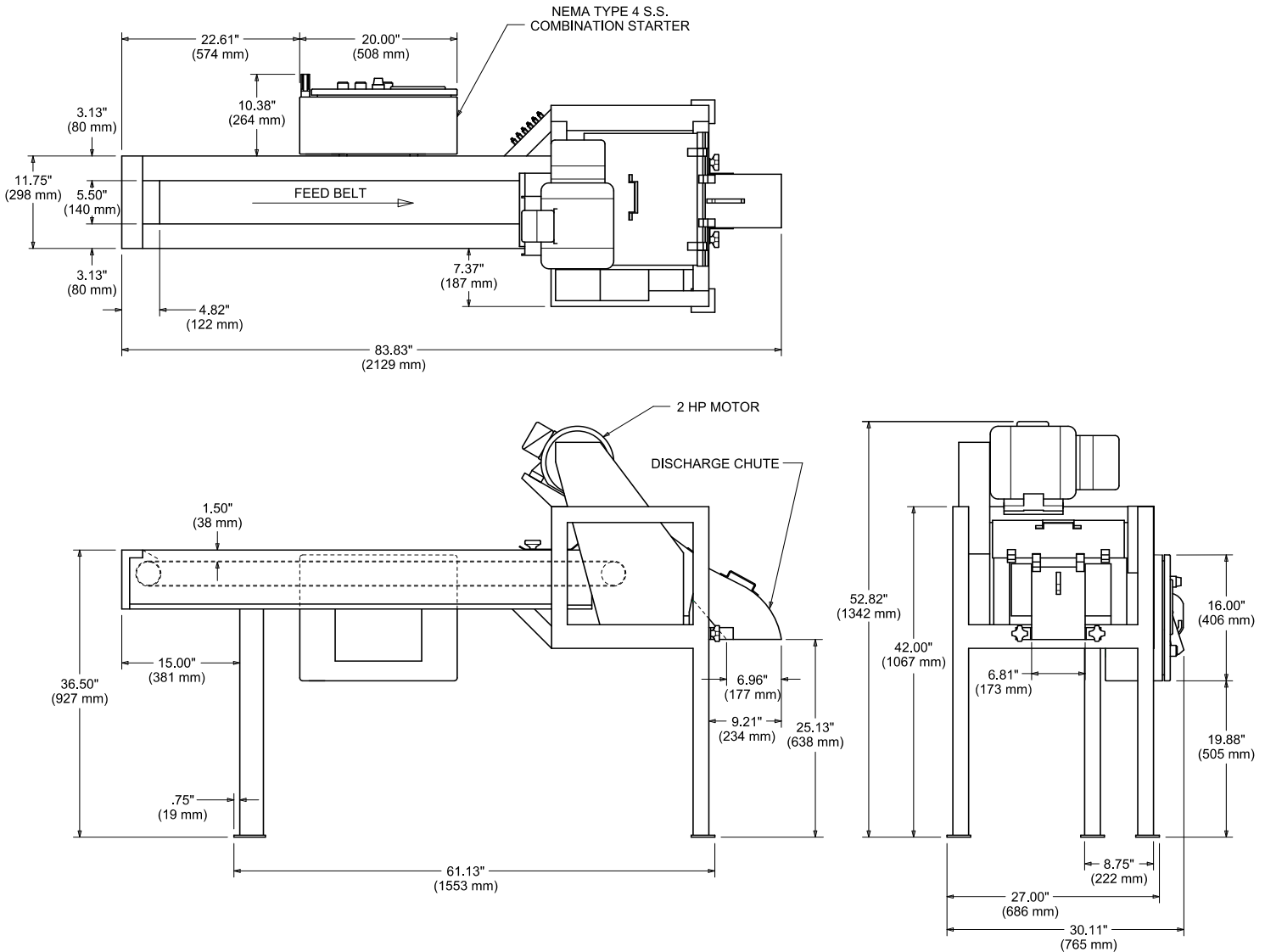


**Designers and manufacturers of
precision size reduction equipment.**

©Urschel is a registered trademark of Urschel Laboratories, Inc.

Urschel® Model HX-A Dimensional Drawing

Packaging - Processing
Bid on Equipment
 1-847-683-7720
www.bid-on-equipment.com



Your Product Can Be Test Cut

Urschel Laboratories has a complete network of test facilities and experienced service and sales representatives around the world ready to work for you on any size reduction application. Contact your local Urschel Laboratories' representative to schedule a comprehensive, no-obligation test today at www.urschel.com



URSCHEL LABORATORIES INCORPORATED

2503 Calumet Avenue, P.O. Box 2200
 Valparaiso, Indiana 46384-2200 U.S.A.
 219/464-4811 Fax: 219/462-3879
<http://www.urschel.com>
 E-mail: info@urschel.com

**Designers and manufacturers of
precision size reduction equipment.**

©Urschel is a registered trademark of Urschel Laboratories, Inc.