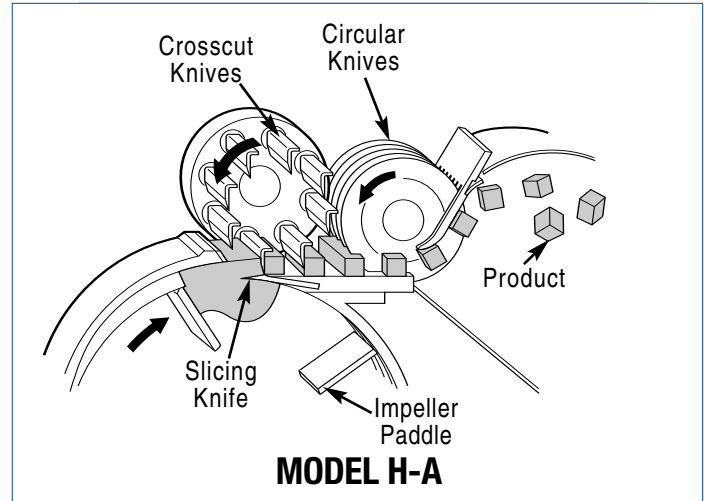


Urschel® Model H-A

Uniformly Dices or Strip Cuts

Packaging - Processing
Bid on Equipment
1-847-683-7720
www.bid-on-equipment.com



SPECIFICATIONS

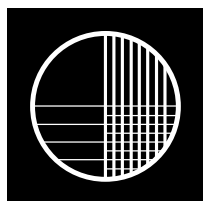
Length: 73.73" (1873 mm)
Width: 45.94" (1167 mm)
Height: 49.25" (1251 mm)
Net Weight: 770 lb (349 kg)
Motor: 2 HP (1.5 kW)

APPLICATIONS

The Urschel Model H-A uniformly slices, strip cuts, and dices a variety of products including peaches, pears, potatoes, lettuce, cucumbers, and carrots. The machine features continuous operation for uninterrupted production, and simplified design for easy cleanup and maintenance.

Maximum infeed product entering the Model H-A should not exceed 5-1/2" (140 mm) in any dimension.

If your product application is not mentioned on this page, contact your local Urschel representative to determine the most effective solution to your size reduction needs.



URSCHEL

LABORATORIES INCORPORATED

2503 Calumet Avenue, P.O. Box 2200
Valparaiso, Indiana 46384-2200 U.S.A.
219/464-4811 Fax: 219/462-3879
<http://www.urschel.com>
E-mail: info@urschel.com

**Designers and manufacturers of
precision size reduction equipment.**

©Urschel is a registered trademark of Urschel Laboratories, Inc.

L1973 APR 2005 (s.s. 1645)

OPERATING PRINCIPLE

Product is delivered to a feed hopper, then enters a rotating impeller. Centrifugal force holds the product against the inside of the slice case as the impeller paddles carry the product past the slicing knife. An adjustable case gate at the top of the case allows the product to move outward across the edge of the slicing knife. The distance between the end of the case gate and the slicing knife edge determines the slice thickness.

As the slices emerge, crosscut knives move downward producing strips. Strips move without interruption across the top surface of the slicing knife holder into the circular knives where they are cut into cubes or other three-dimensional cuts of a selected size.

TYPES OF CUTS

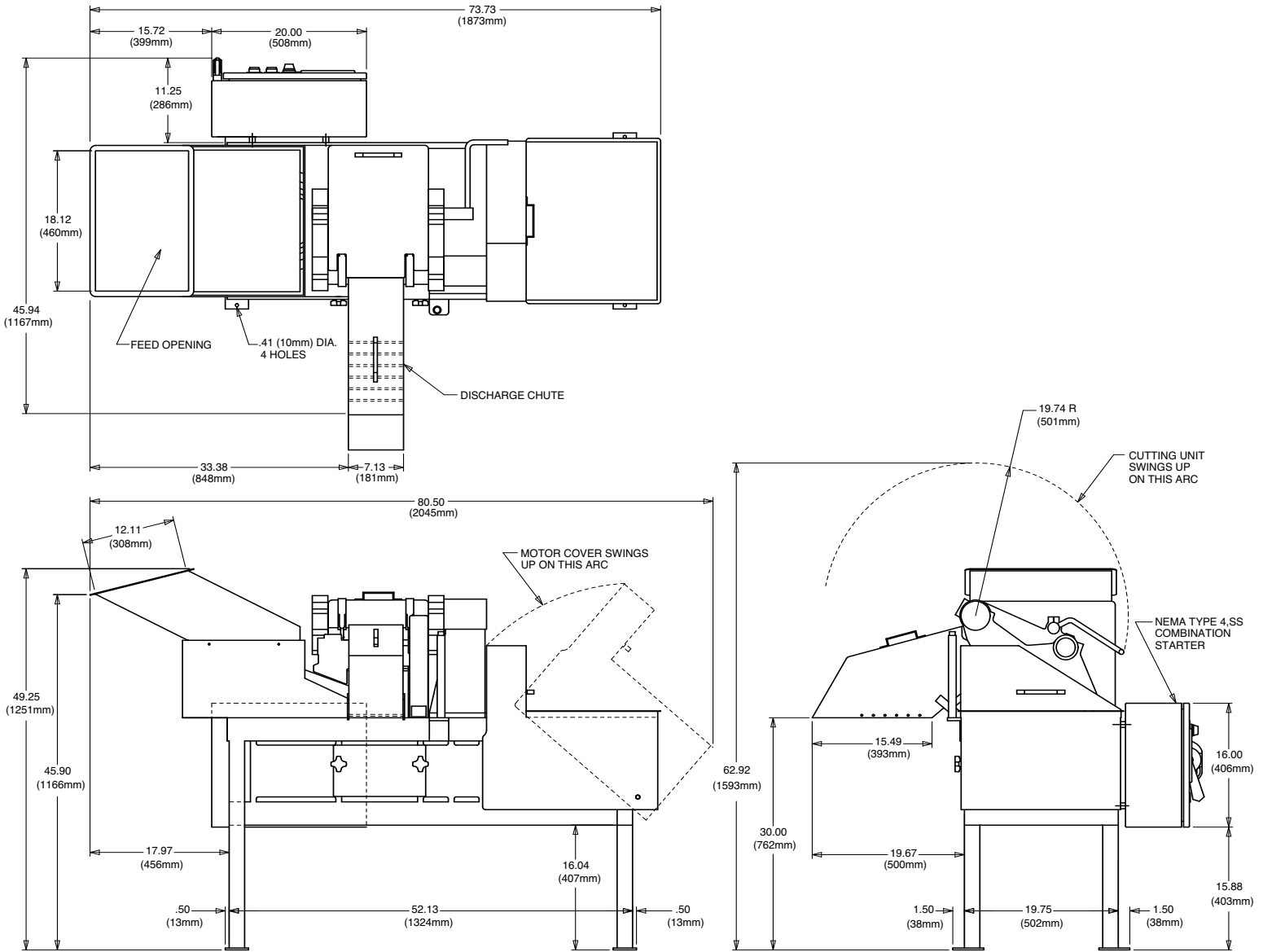
SLICE THICKNESS: 1/8 to 1" (3.2 to 25 mm)

CROSSCUT KNIFE CUTS: 3/4" (19.1 mm), 7/8" (22.2 mm), 1" (25.4 mm), 1-1/8" (28.6 mm), 1-1/2" (38.1 mm), 1-3/4" (44.5 mm). *Additional sizes available. Consult your local Urschel sales representative.*

CIRCULAR KNIFE CUTS: 1/8" (3.2 mm), 3/16" (4.8 mm), 1/4" (6.4 mm), 3/8" (9.5 mm), 1/2" (12.7 mm), 5/8" (15.9 mm), 3/4" (19.1 mm), 1" (25.4 mm), 1-1/8" (28.6 mm), 1-1/2" (38.1 mm), 2" (50.8 mm), 3" (76.2 mm)

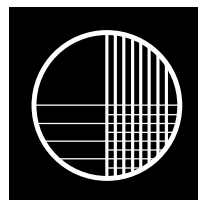
Urschel® Model H-A Dimensional Drawing

Packaging - Processing
Bid on Equipment
 1-847-683-7720
www.bid-on-equipment.com



Your Product Can Be Test Cut

Urschel Laboratories has a complete network of test facilities and experienced service and sales representatives around the world ready to work for you on any size reduction application. Contact your local Urschel Laboratories' representative to schedule a comprehensive, no-obligation test today at www.urschel.com.



URSCHEL
LABORATORIES INCORPORATED
 2503 Calumet Avenue, P.O. Box 2200□
 Valparaiso, Indiana 46384-2200 U.S.A.□
 219/464-4811 Fax: 219/462-3879□
<http://www.urschel.com>□
 E-mail: info@urschel.com

**Designers and manufacturers of
precision size reduction equipment.**

©Urschel is a registered trademark of Urschel Laboratories, Inc.