

Urschel® Model CC-D

Versatile Shredder/Slicer/Strip Cutter

Packaging - Processing
Bid on Equipment
 1-847-683-7720
www.bid-on-equipment.com



SPECIFICATIONS

Length: 48.03" (1220 mm)
 Width: 35.26" (896 mm) or 35.31" (897 mm)
 Height: 29.92" (760 mm) or 31.36" (797 mm)
 Net Weight: 530 lb (240 kg)
 Motor: 5 or 10 HP (3.7 or 7.5 kW)

The Model CC-D is accepted by the United States Department of Agriculture, Dairy Division.

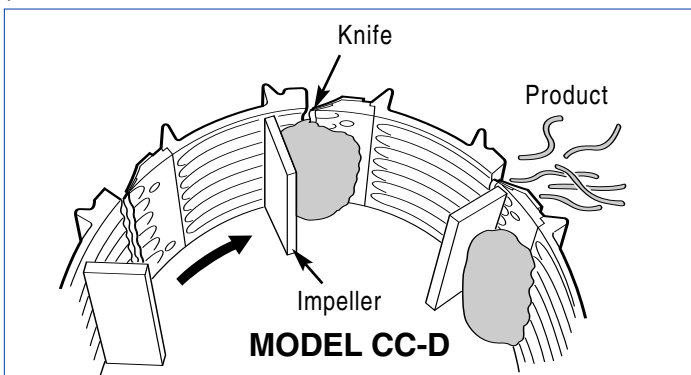
APPLICATIONS

The Model CC-D features maximum flexibility through different types of cutting heads including Flat Slices, Strip Cuts, Full Shreds, Oval Shreds, "V" Shreds, and Crescent Shreds. Equipped with stainless steel contact parts, the machine features continuous operation for uninterrupted production, and simplified design for easy clean-up and maintenance. The Model CC-D will accept products measuring up to 3-1/2" (88.9 mm) in any dimension.

Many different types of products can be sliced/shredded using the Model CC-D for a variety of applications including, but not limited to: shredding cheese for pizza toppings, tacos, or salads; shredding potatoes for hash browns, shredding carrots for salad preparations, and slicing of various fruits and vegetables.

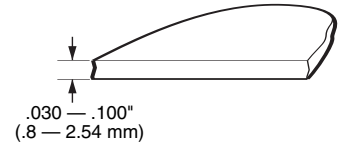
OPERATING PRINCIPLE

Product enters the rotating impeller and is held against the inner surface of the cutting head assembly by centrifugal force. The cutting head assembly consists of eight individual stationary cutting stations. Slices or shreds are produced as product passes each knife in a smooth and uninterrupted manner. Length is controlled by input product size.

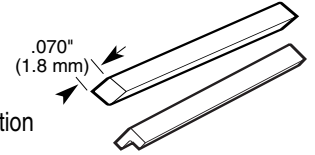


TYPES OF CUTS

FLAT SLICE: .030 to .100" (.8 to 2.54 mm) thicknesses

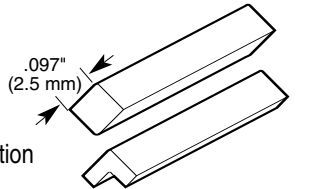


.070" (1.8 mm) FULL SHRED
 diamond-shaped cross section measuring approximately .070" (1.8 mm) on all sides.



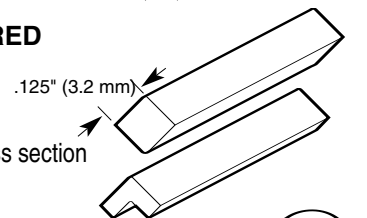
"V" SHRED: "V"-shaped cross section

.097" (2.5 mm) FULL SHRED
 diamond-shaped cross section approximately .097" (2.5 mm) on all sides.



"V" SHRED: "V"-shaped cross section

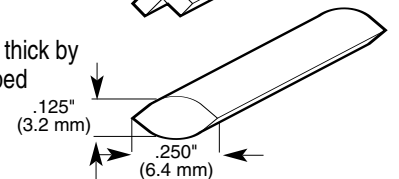
.125" (3.2 mm) FULL SHRED
 diamond-shaped cross section approximately .125" (3.2 mm) on all sides.



"V" SHRED: "V"-shaped cross section

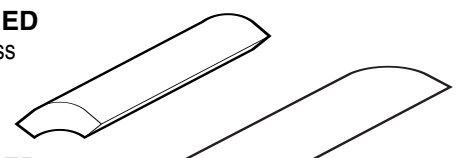
OVAL SHREDS

Approximately .125" (3.2mm) thick by .250" (6.4 mm) and oval-shaped cross section.



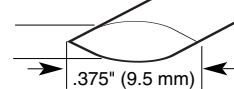
CRESCENT SHRED

Crescent-shaped cross section.



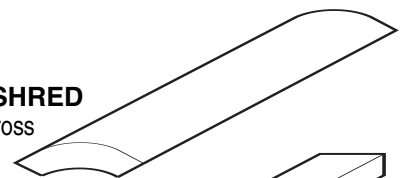
WIDE OVAL SHRED

Oval-shaped cross section approximately .125" (3.2 mm) thick by .375" (9.5 mm) wide.



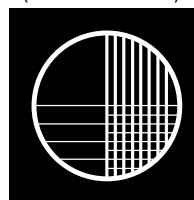
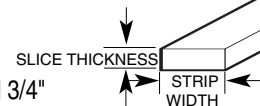
WIDE CRESCENT SHRED

Wide crescent-shaped cross section.



STRIP CUTS

Rectangular cross section. Widths: 1/4 and 3/4" (6.4 and 19 mm)



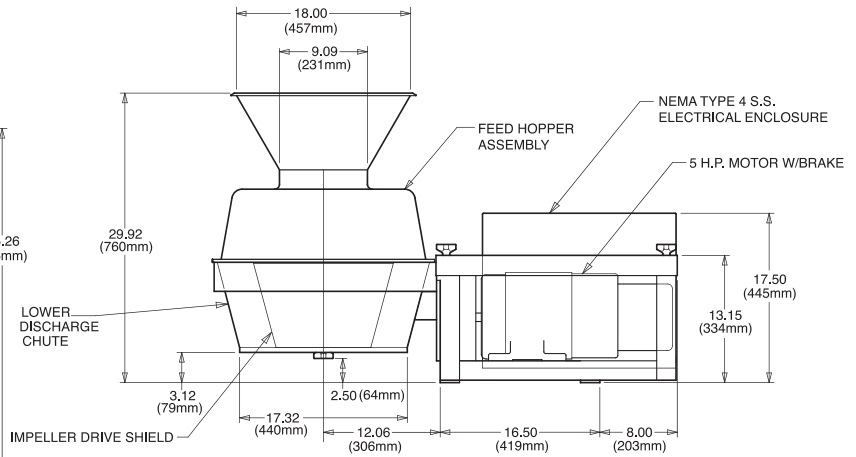
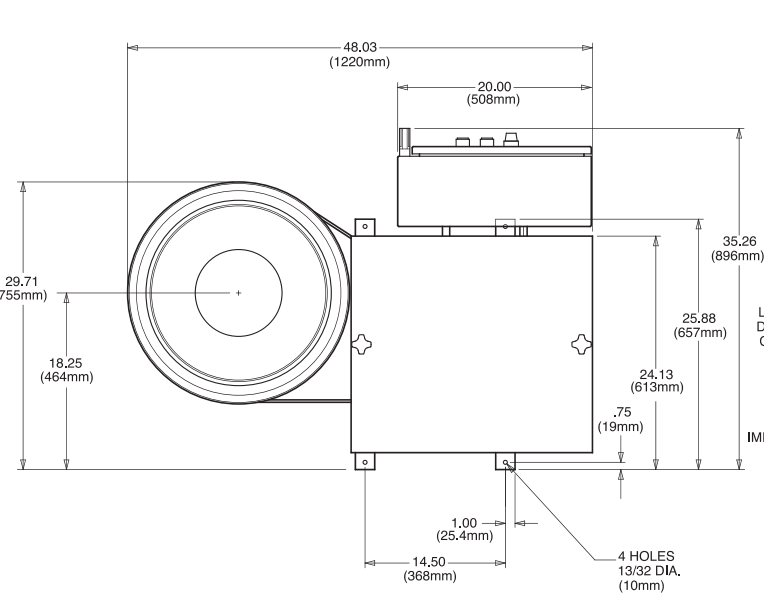
URSCHEL
LABORATORIES INCORPORATED

2503 Calumet Avenue, P.O. Box 2200
 Valparaiso, Indiana 46384-2200 U.S.A.
 219/464-4811 Fax: 219/462-3879
<http://www.urschel.com>
 E-mail: info@urschel.com

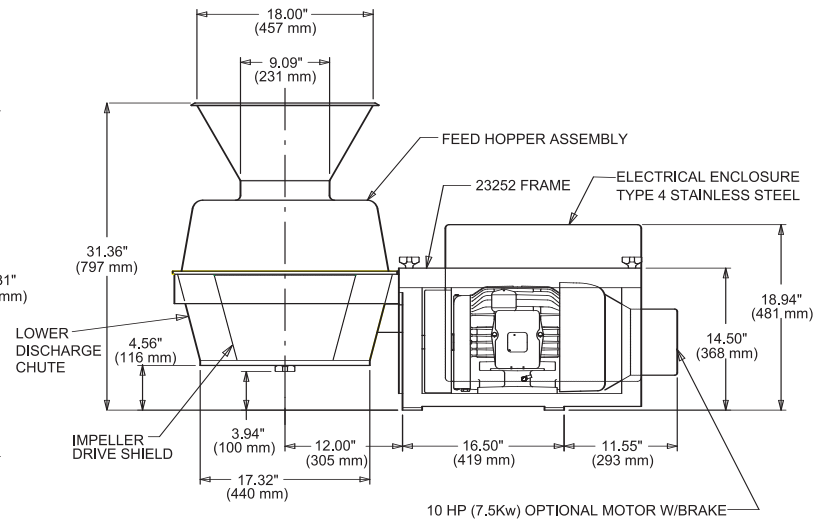
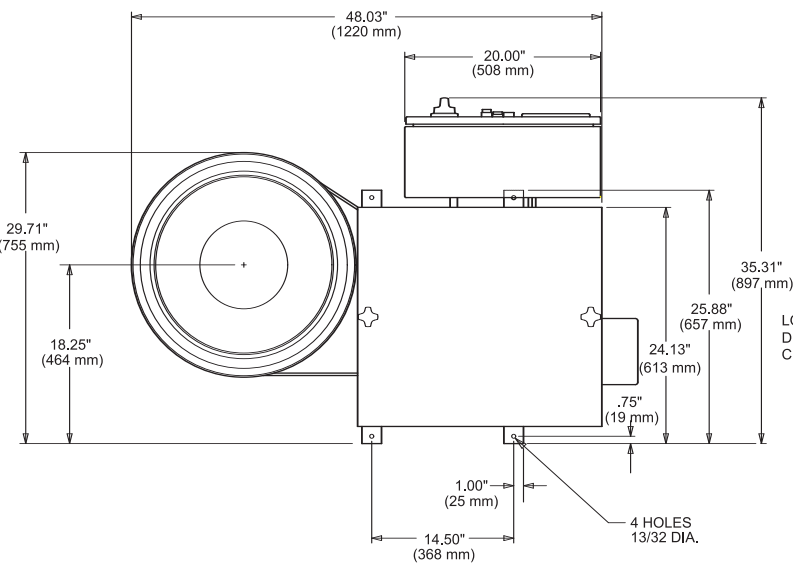
Designers and manufacturers of precision size reduction equipment.

Urschel® Model CC-D Dimensional Drawing

Packaging - Processing
Bid on Equipment
 1-847-683-7720
www.bid-on-equipment.com



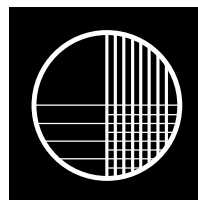
Model CC-D equipped with a 5 HP motor.



Model CC-D equipped with a 10 HP motor.

Your Product Can Be Test Cut

Urschel Laboratories has a complete network of test facilities and experienced service and sales representatives around the world ready to work for you on any size reduction application. Contact your local Urschel Laboratories' representative to schedule a comprehensive, no-obligation test today at www.urschel.com.



URSCHEL
LABORATORIES INCORPORATED
 2503 Calumet Avenue, P.O. Box 2200
 Valparaiso, Indiana 46384-2200 U.S.A.
 219/464-4811 Fax: 219/462-3879
<http://www.urschel.com>
 E-mail: info@urschel.com

**Designers and manufacturers of
precision size reduction equipment.**

©Urschel is a registered trademark of Urschel Laboratories, Inc.