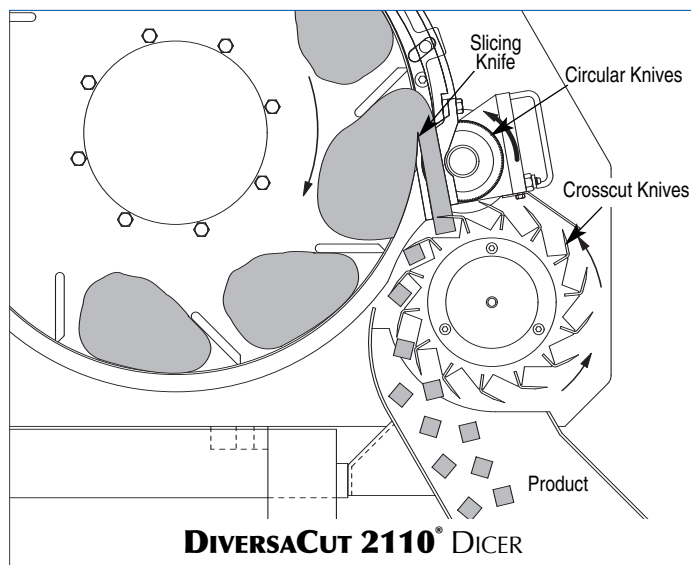


DIVERSACUT 2110[®] DICER

High Capacity & Durable, Compact Design

Packaging - Processing
Bid on Equipment
 1-847-683-7720
www.bid-on-equipment.com



SPECIFICATIONS

Length: 63.62" (1616 mm)
 Width (with standard discharge chute): 54.21" (1377 mm)
 Width (with optional discharge chute) 63.89" (1623 mm)
 Height: 68.37" (1736 mm)
 Net Weight: 1500 lb (681 kg)
 Motor: 5 or 10 HP (3.7 or 7.5 kW)

APPLICATIONS

The DiversaCut 2110[®] Dicer, by Urschel Laboratories, uniformly dices, strip cuts, and slices a wide variety of products at high production capacities including potatoes, tomatoes, bread, carrots, turnips, rutabagas, celery, pineapple, preformed boneless turkey roasts, pet food emulsions, sugar beets, and many other applications.

Maximum product input size is 10" (254 mm) in any dimension. The machine features continuous operation for uninterrupted production and simplified design for easy cleanup and maintenance.

OPERATING PRINCIPLE

Product is delivered to a feed hopper, then enters a rotating impeller. The resulting centrifugal force holds the product against the inside of the case as the impeller paddles carry the product past the slicing knife. An adjustable case gate on the impeller case allows product to move outward across the edge of the slicing knife. The distance between the edge of the slice gate and the slicing knife edge determines the slice thickness.

As the slices emerge, they are guided between the slicing knife and stripper plate before entering circular knives where they are cut into strips. The strips pass directly into the crosscut knives which make the final cut.

TYPES OF CUTS

Slices: By removing the crosscut spindle and the circular knife spindle, the machine can make slices thru the full range of slice thicknesses.

Flat Slices: 1/16 to 1" (1.6 to 25.4 mm)

Crinkle Slices: 1/8 to 1" (3.2 to 25.4 mm)

Strip Cuts: Flat and crinkle strip cuts in a variety of widths can be made by removing either the crosscut knife spindle or the circular knife spindle assembly.

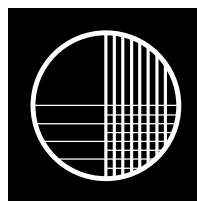
Minimum flat strips such as 1/8 x 1/8" x length of product (3.2 x 3.2 mm x length of product); crinkle strips such as 9/32 x 9/32" x length of product (7.1 x 7.1 mm x length of product); Maximum flat strips such as 1 x 1" x length of product (25.4 x 25.4 mm x length of product); crinkle strips such as 5/8 x 5/8" x length of product (15.9 x 15.9 mm x length of product). Note: Combinations of circular knives or crosscut knives can be used to shorten length of strips.

Dices: A slicing knife, circular knife spindle, and crosscut knife spindle are used for dicing. Changing the dice size is done by using the required cutting spindles and adjusting the slice thickness.

Circular Knife Cuts: 1/8 to 3" (3.2 to 76.2 mm)

Crosscut Knife Cuts: 1/8 to 1-1/2" (3.2 to 38.1 mm)

Crosscut Knife Crinkle Cuts: 9/32 to 5/8" (7.1 to 15.9 mm)



URSCHEL

LABORATORIES INCORPORATED

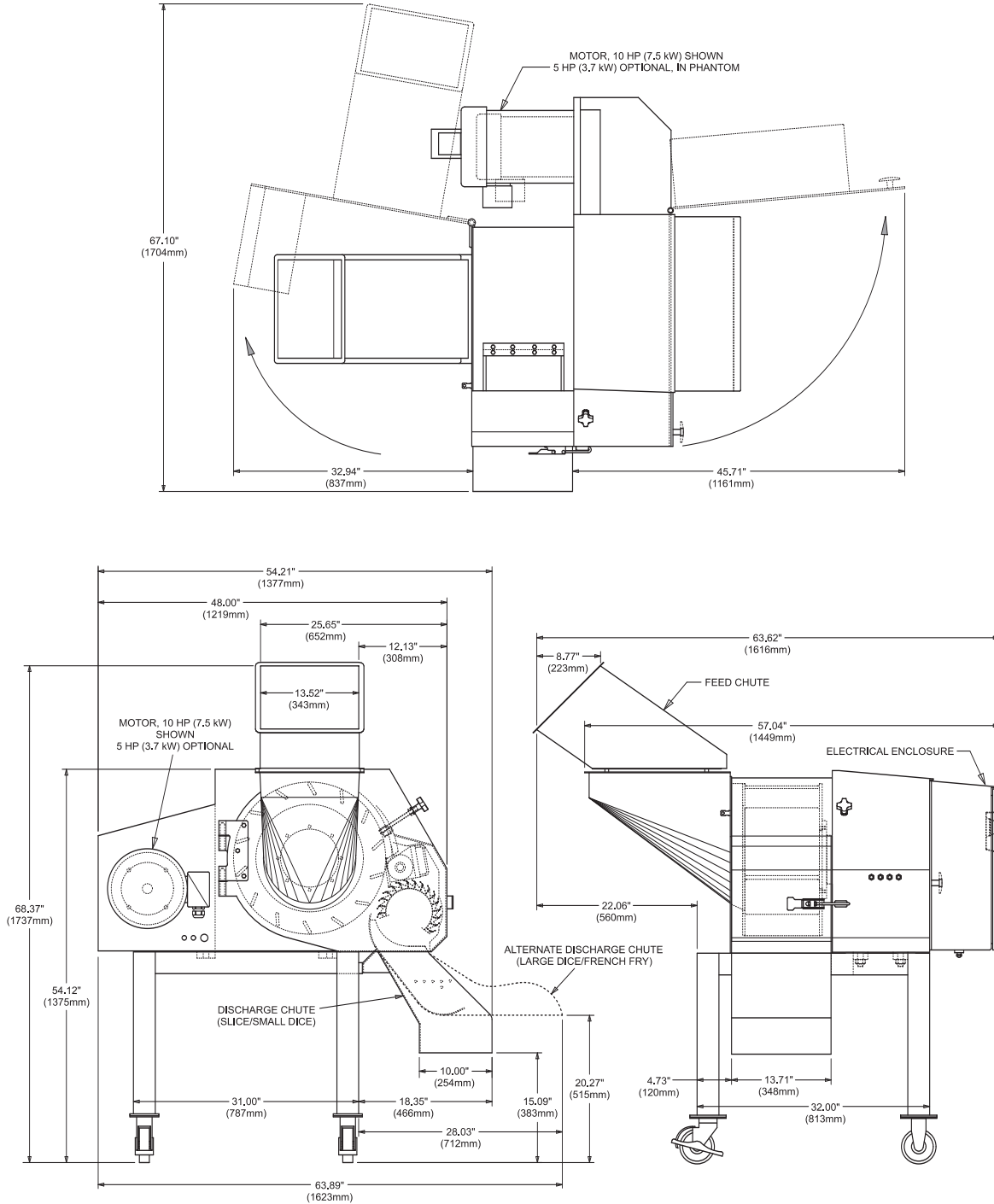
2503 Calumet Avenue, P.O. Box 2200
 Valparaiso, Indiana 46384-2200 U.S.A.
 219/464-4811 Fax: 219/462-3879
<http://www.urschel.com>
 E-mail: info@urschel.com

Designers and manufacturers of precision size reduction equipment.

DIVERSACUT 2110[®] DICER

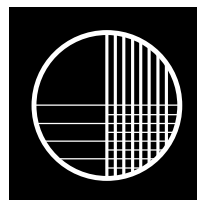
Dimensional Drawing

Packaging - Processing
Bid on Equipment
 1-847-683-7720
www.bid-on-equipment.com



Your Product Can Be Test Cut

Urschel Laboratories has a complete network of test facilities and experienced service and sales representatives around the world ready to work for you on any size reduction application. Contact your local Urschel Laboratories' representative to schedule a comprehensive, no-obligation test today at www.urschel.com.



URSCHEL
LABORATORIES INCORPORATED
 2503 Calumet Avenue, P.O. Box 2200
 Valparaiso, Indiana 46384-2200 U.S.A.
 219/464-4811 Fax: 219/462-3879
<http://www.urschel.com>
 E-mail: info@urschel.com

**Designers and manufacturers of
 precision size reduction equipment.**

©DiversaCut, DiversaCut 2110, and Urschel are registered trademarks of Urschel Laboratories, Inc.