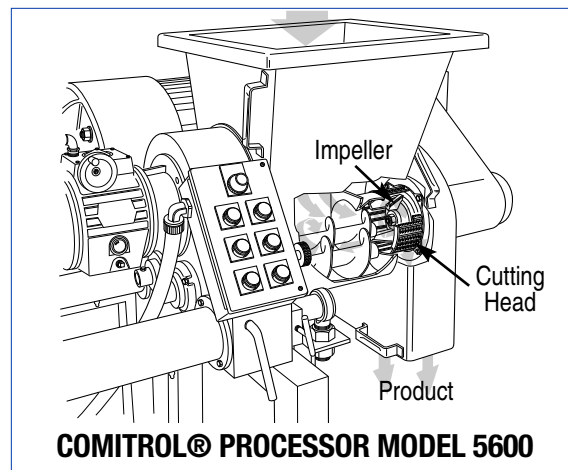


# Comitrol® Processor Model 5600

## Controlled Particle Size Reduction

Packaging - Processing  
**Bid on Equipment**  
 1-847-683-7720  
[www.bid-on-equipment.com](http://www.bid-on-equipment.com)



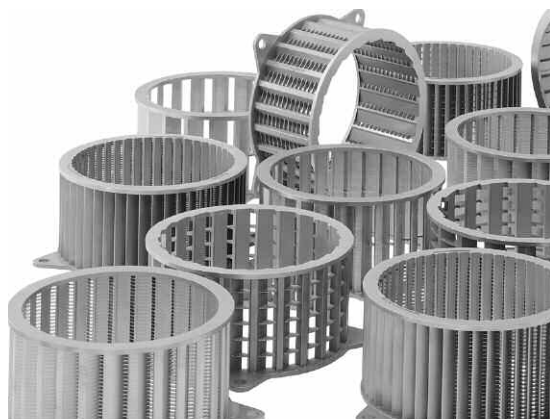
### SPECIFICATIONS

Length: ..... 91.38" (2321 mm)  
 Width: ..... 56.57" (1437 mm)  
 Height: ..... 67.63" (1718 mm)  
 Net Weight: ..... 3126 lb (1421 kg)  
 Motors: ..... Feeder - 2 HP (1.5 KW)  
 ..... Impeller - 100 HP (75 kW)

### APPLICATIONS

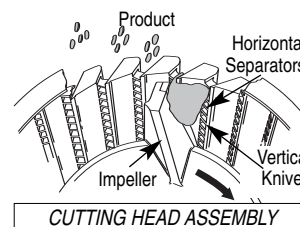
The Comitrol Processor Model 5600 has all of the benefits of the unique Comitrol size reduction principle, plus close cutting tolerances at an increased impeller speed of 5,600 revolutions per minute. The unit offers a high degree of particle size control to meet your product specifications and texture requirements.

The Model 5600 has a positive product feed and will deliver precise, cleanly cut particles from a variety of fresh or frozen tempered raw meat materials with little temperature rise. The Model 5600 produces consistent, high quality particles without the variance experienced using typical screw, pump-fed grinder-plate, or chopper-bowl style machines. The machine features continuous operation for uninterrupted production, and simplified design for easy cleanup and maintenance.



### OPERATING PRINCIPLE

Product received by a hopper is delivered to the cutting head and impeller. Primary and secondary feed screws rotate in opposite directions to ensure a uniform feed to the cutting area. Once in the impeller, centrifugal force moves the product outward to the impeller tips, which carry the product past the cutting edges of the stationary reduction head. Small portions of product projecting into the spaces between the separators are cut off into flakes by spaced columns of vertical knives. These flakes fly outward and away from the cutting head. The wall surfaces between the vertical knives are relieved to eliminate rubbing friction that would produce heat.



### TYPES OF CUTS

Particle sizes ranging from coarse to fine emulsions are possible. To ensure the proper combination of cutting parts, Urschel Laboratories, Inc. recommends your product be tested in one of our worldwide Product Test Cutting Facilities free-of-charge to find the most efficient solution to your size reduction needs.



Cutting unit with cutting enclosure removed (for illustration).

©Comitrol and Urschel are registered trademarks of Urschel Laboratories, Inc.



**URSCHTEL**  
**LABORATORIES INCORPORATED**  
 2503 Calumet Avenue, P.O. Box 2200  
 Valparaiso, Indiana 46384-2200 U.S.A.  
 219/464-4811 Fax: 219/462-3879  
<http://www.urschel.com>  
 E-mail: [info@urschel.com](mailto:info@urschel.com)

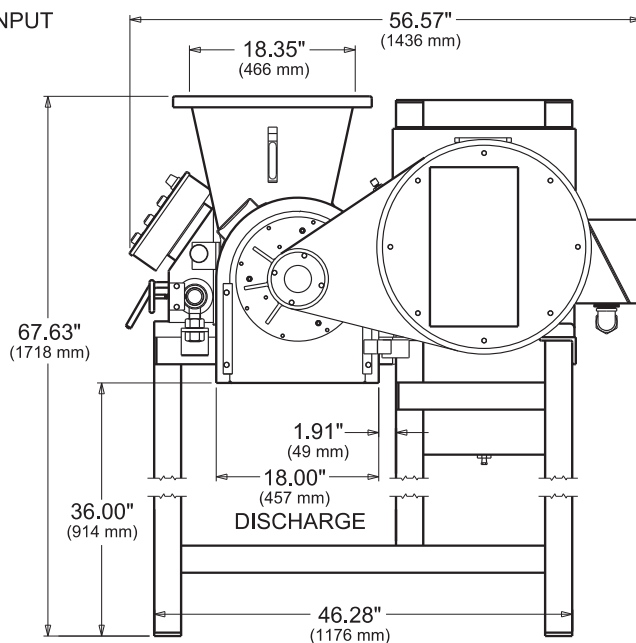
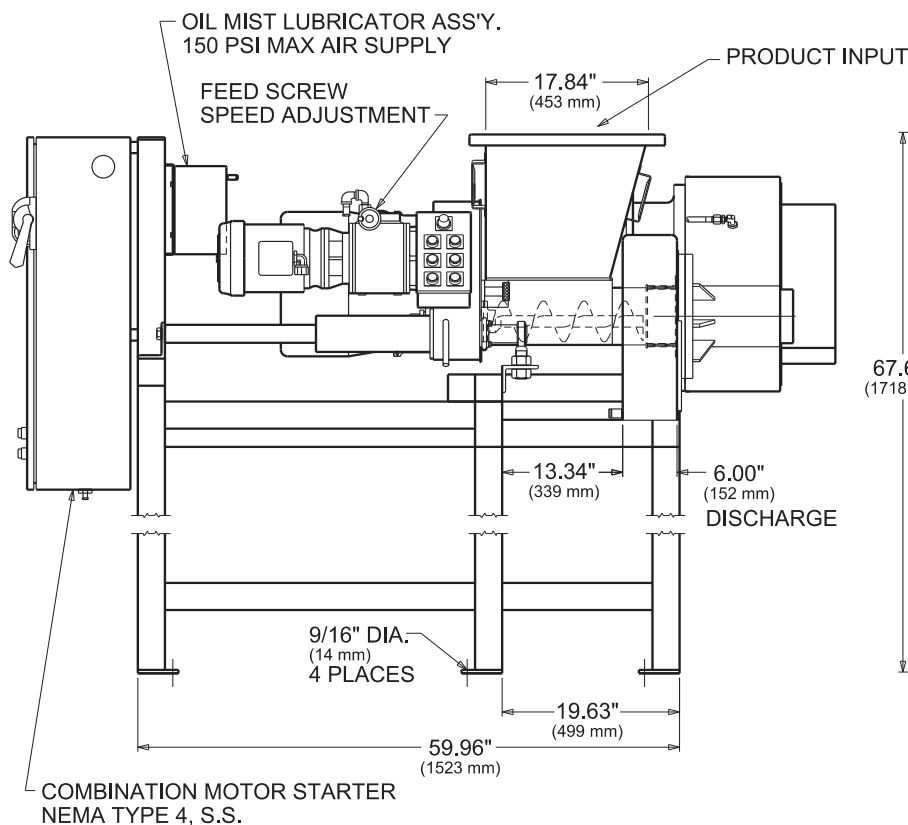
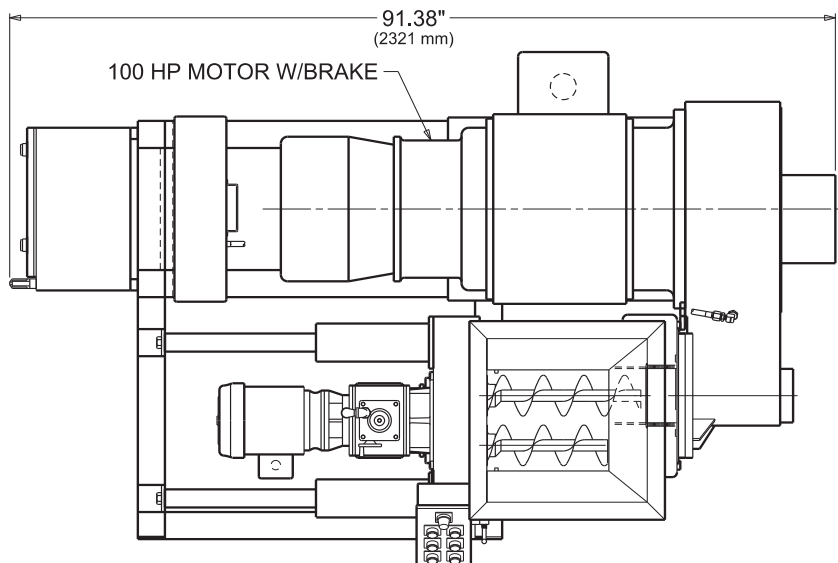
**Designers and manufacturers of precision size reduction equipment.**

L2070 SEP 2006 (s.s. L1537)

If your product application is not mentioned on this page, [contact your local Urschel representative](#) to determine the most effective solution to your size reduction needs.

# Comitol® Processor Model 5600 Dimensional Drawing

Packaging - Processing  
**Bid on Equipment**  
1-847-683-7720  
[www.bid-on-equipment.com](http://www.bid-on-equipment.com)



## Your Product Can Be Test Cut

Urschel Laboratories has a complete network of test facilities and experienced service and sales representatives around the world ready to work for you on any size reduction application. Contact your local Urschel Laboratories' representative to schedule a comprehensive, no-obligation test today at [www.urschel.com](http://www.urschel.com)



## URSCHEL

LABORATORIES INCORPORATED

2503 Calumet Avenue, P.O. Box 2200  
Valparaiso, Indiana 46384-2200 U.S.A.  
219/464-4811 Fax: 219/462-3879

<http://www.urschel.com>  
E-mail: [info@urschel.com](mailto:info@urschel.com)

**Designers and manufacturers of  
precision size reduction equipment.**

©Comitol and Urschel are registered trademarks of Urschel Laboratories, Inc.