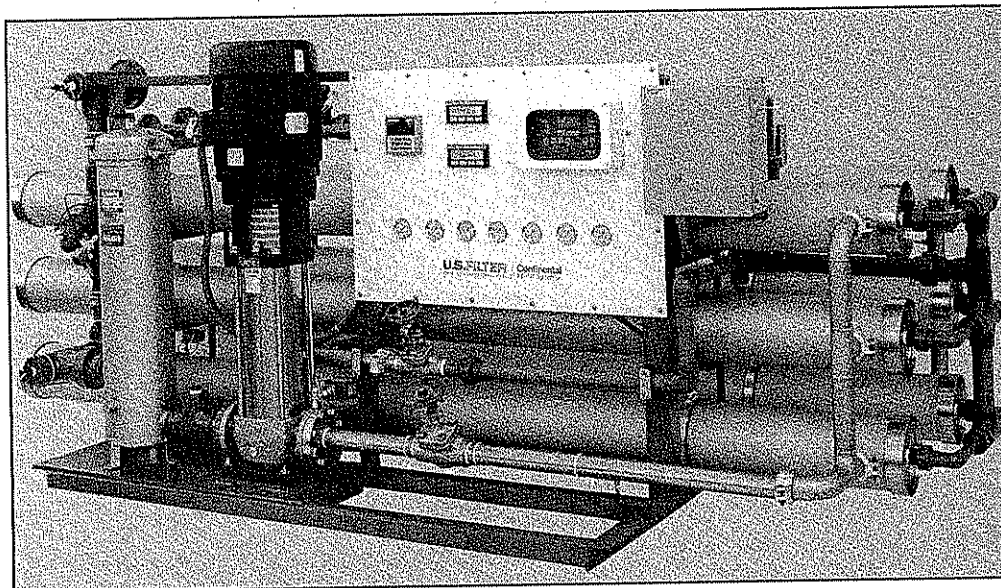


H-8 Series

*Reverse Osmosis Water Purification
Systems for Commercial and
Industrial Applications*

Produces 42000 to 150000 gpd



Quality and Value for Many Commercial and Industrial Applications

Reverse Osmosis requires lower capital and operating costs than distillation and removes many more impurities than deionization. Because RO removes 96 to 98% of all dissolved ions, and 99% of incoming bacteria, pyrogens, particulates and organic compounds (with molecular weight greater than 300), RO can be used for many applications, including:

- Beverage
- Chemical Processors
- Cosmetic Manufacturers
- Electronics
- Food Processors
- Hospitals
- Metal Finishers
- Pharmaceuticals

Low Capital and Operating Costs

Competitively priced and economical to operate, the H-Series systems are the cost alternative to other general commercial and industrial systems.

Consistent Quality

U.S. Filter was one of the pioneers in the reverse osmosis field. We have over thirty years experience in the design and manufacture of RO systems, assuring our clients of consistent, reliable quality. Our water purification systems are assembled in a GMP and ISO-9002 registered facility.

Wide Range of Standard Features

You will find all of these systems are standardized with components which other manufacturers only offer as adder options. Our standard features include stainless steel

8" vessels, stainless steel high pressure piping, prefiltration housing, series 2000 controller, flow meters, liquid filled pressure gauges and 316 stainless steel pumps.

Options

Optional features include panel mounted electronic flow meters, Thornton conductivity meter with percent rejection, auto-flush, voltage options and reject recirculation. Other available options include membrane choices from major U.S. manufacturers.

High Performance Membranes

Every H - Series system utilizes spiral-wound RO membranes. Every membrane configuration is designed to give high salt and organic rejection and allow for high flow rates.

**H-8 Series
Reverse Osmosis Systems**

Performance Specifications

H-8 Series Reverse Osmosis Systems

ROSLH	3420	3630	3840	31000	31200	31500
Initial Production Capacity (max.)*	29 gpm 42000gpd	44 gpm 63000gpd	58 gpm 84000gpd	69 gpm 100000gpd	83 gpm 120000gpd	104 gpm 150000gpd
Internal Recovery Rate**	61%	65%	65%	65 %	65%	70%
System Recovery Rate**	up to 75% all systems					
Maximum Operating Pressure	300 psi all systems					
System Projected Rejection Rates	> 94% all systems					

Reverse Osmosis Membranes

Size	8 x 40" all systems					
Quantity	6	9	12	15	18	24
Initial Flow Rating	7000 gpd all systems					
Initial Salt Passage	< 5% all systems					
Manufacturer	Desal					
Membrane Type	Thin Film all systems					
Membrane Rejection	95% all systems					
Pressure Vessels	3 elements per vessel					
Membrane Array	1:1	1:1:1	2:1:1	3:2	3:2:1	3:2:2:1

*System capacity is based on operation with a feed of 1500 mg/l NaCl solution at 250 psig, 77°F, and pH 7.8.

**Systems recovery can be increased, up to the scaling limit, by using reject recirculation.

***Other types available, but could affect capacity.

Feed Water Requirements

Maximum Fouling Index 3*
(silt density index)

Maximum Reject Stream Langelier Saturation Index < 0

Maximum Free Chlorine .0 ppm

Operating Temperature Range 33° - 113°F
(1 - 45°C)

Operating pH Range 4 - 11

Prefiltration 5 micron
*systems may be run with a feedwater SDI of up to 5.0 with reduced capacity

Electrical Requirements:

Potential* 460 VAC/60 Hz

Phase Three

Current (full load) 27 - 40 amps

*Other potentials available on request.

H-8 Series ROSLH	<u>3420</u>	<u>3630</u>	<u>3840</u>	<u>31000</u>	<u>31200</u>	<u>31500</u>
Plumbing Requirements						
Inlet Pipe Size	2"	2.5"	2.5"	3"	3"	3"
Inlet Pipe Materials	PVC all systems					
Inlet Required Flow Rates (max)*	48 gpm	68 gpm	90 gpm	107 gpm	129 gpm	149 gpm
Inlet Required Pressure	20-100 psig all systems					
Drain Size (min.)	3"	3"	3"	4"	4"	4"
Drain Flow Capacity	48 gpm	68 gpm	90 gpm	107 gpm	129 gpm	149 gpm
Product Pipe Size	1.5"	1.5"	2"	2"	2"	2.5"
Product Pipe Materials	PVC all systems					

*Required inlet flow rates will vary depending on flux and recovery.

Plumbing Connections*

Feed water	2"	2.5"	2.5"	3"	3"	3"
Product	1.5"	1.5"	2"	2"	2"	2.5"
Reject	1" NPT	1.5"	1.5"	1.5"	1.5"	2"

* all plumbing connections are flanged, except - 3420 reject

Frame

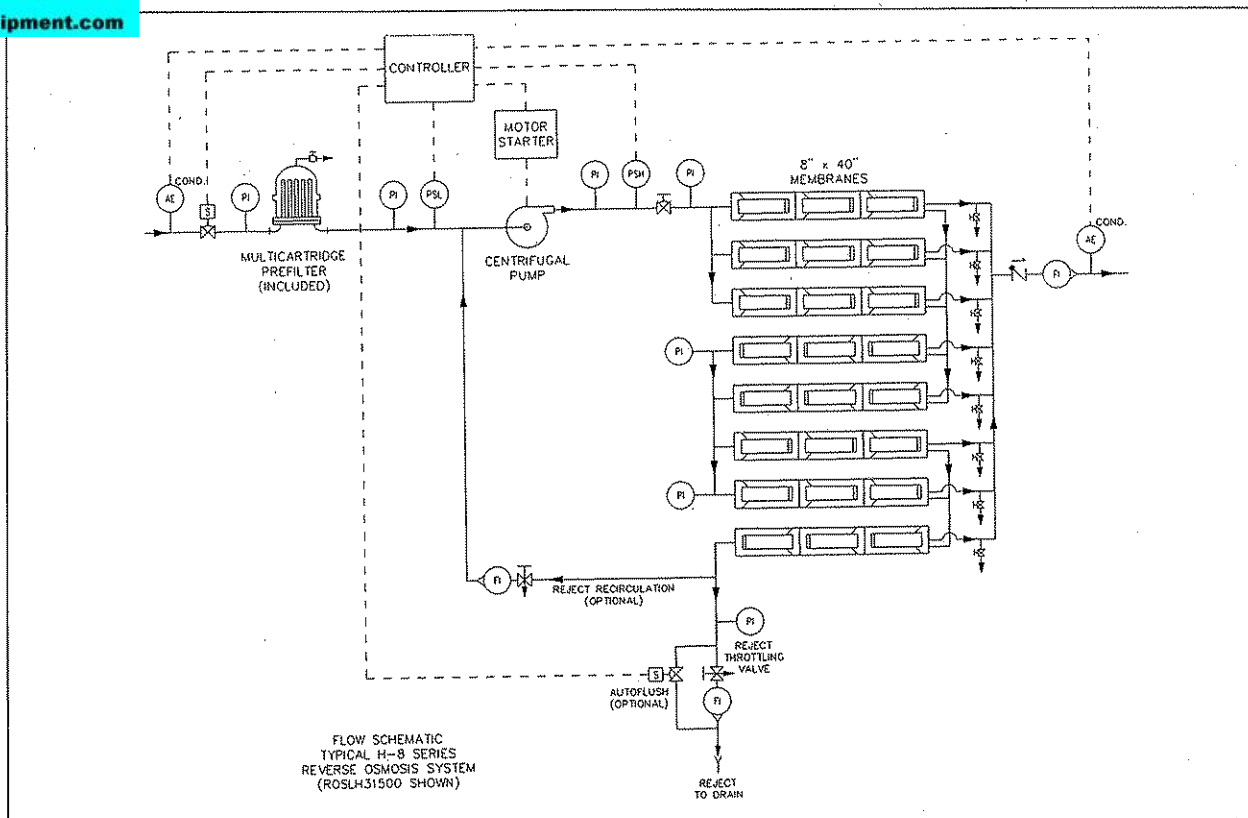
Configuration	Horizontal
Material of Construction	Steel
Frame Finish	Enamel

Pump

Type	Multistage Centrifugal					
Materials of Construction	Stainless steel					
Motor Horsepower Rating	20 hp	20 hp	25 hp	25 hp	30 hp	30 hp

Systems Dimensions (approximate)

ROSLH	<u>3420</u>	<u>3630</u>	<u>3840</u>	<u>31000</u>	<u>31200</u>	<u>31500</u>
Height	64"	64"	64"	64"	64"	68"
Width	160"	160"	160"	160"	160"	160"
Depth	48"	48"	48"	60"	60"	60"
Shipping Weight	1500 lbs.	2000 lbs.	2500 lbs.	3000 lbs.	3500 lbs.	4000 lbs.



Ordering Information

H-8 Series Reverse Osmosis Systems

Catalog Number	Description*
ROSLH 30420	42,000 gpd
ROSLH 30630	63,000 gpd
ROSLH 30840	84,000 gpd
ROSLH 31000	100,000 gpd
ROSLH 31200	120,000 gpd
ROSLH 31500	150,000 gpd

*gpd rating is nominal capacity at 25°C (77°F), 250 psig and 1500 ppm NaCl.

Catalog Number System Options

ROSLH 30420

Size designator _____

Membrane feature _____
 1 = Desal
 2 = Filmtec

Auto-Flush feature _____
 0 = no
 1 = yes included

Reject Recirculation _____
 0 = no
 1 = yes included

Electronic Flow Meters _____
 0 = no
 1 = yes

Meter - Thornton 770 _____
 0 = no
 1 = yes

Note 1: zero must be used if option is not requested

For Product and Service Information

United States Filter Corporation
 10 Technology Drive
 Lowell, MA 01851
 Telephone: (508) 934-9349
 Fax: (508) 441-6025

For Technical Support - Call

(800) 875-7873 extension 5000



Authorized Dealer