

## Two-channel control card, SafeTNet 2000™

Microprocessor-based controller for remote gas detection



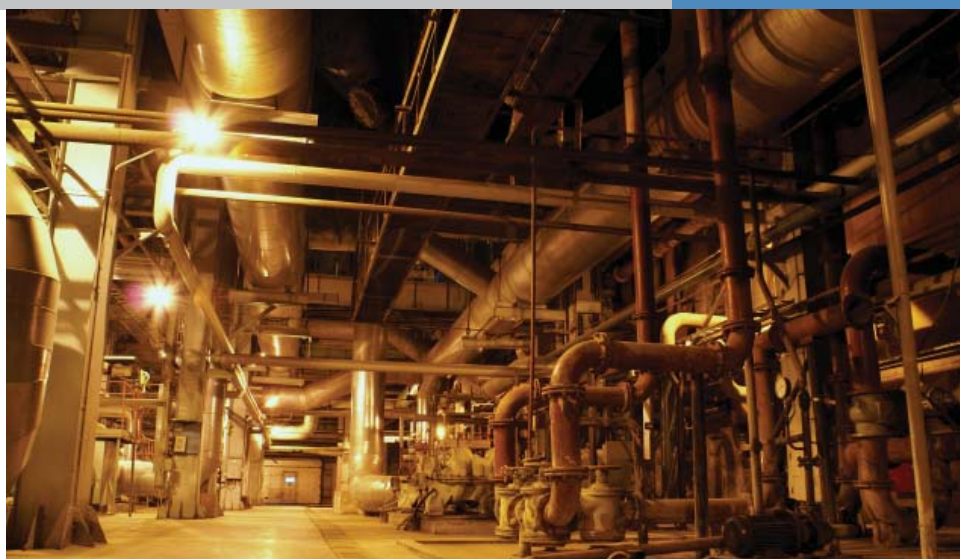
Half-rack configuration



Full-rack configuration



SafeTNet 2000  
control card



The Thermo Scientific SafeTNet 2000 is a microprocessor-based control card designed to accept input from one or two remotely located combustible, oxygen and/or toxic gas detector heads.

The STN2000 two-channel control card simultaneously displays real-time gas concentrations for each active channel. Each channel is supported by low and high alarm relays that feature both audible and visual indicators to warn the user against hazardous gas concentration conditions.

In addition, the common-fault relay will activate if a channel nears potential malfunction. Fully programmable relay options are available for time delay adjustments, latching or non-latching and energizing or de-energizing activation.

### Modular System Capabilities

The SafeTNet 2000 offers flexible design options for modular gas monitoring systems. Installing the STN2000 control card into a full rack provides up to 18 detection points with power or 20 with external power supply. The half rack option provides up to 8 detection points or 10 with external power supply. An optional NEMA 4X enclosure is available for each rack.

### Applications Include:

- Waste Treatment plants
- Water Treatment plants
- Petrochemical refineries
- Pulp & paper mills
- Steel plants
- Mining & Tunneling operations
- Boiler plants
- Parking Garages
- Equipment Shelters

### Key Features

- All functions fully programmable through dip and push button switches
- Fully configurable to any standard 4 to 20 mA detector head
- Common-fault alarm relay
- Simple alarm-point verification
- Programmable time delay for single operator calibration

To maintain optimal product performance, you need immediate access to experts worldwide, as well as priority status when your air quality equipment needs repair or replacement. We offer comprehensive, flexible support solutions for all phases of the product lifecycle. Through predictable, fixed-cost pricing, our services help protect the return on investment and total cost of ownership of your Thermo Scientific air quality products.

## Product Specifications

<b>Preset Ranges</b>	Configurable, with indicator for % LEL, ppm, or % volume
<b>Detector Heads</b>	Combustible, oxygen & toxic
<b>Inputs</b>	Two 24 Vdc, 4 to 20 mA analog inputs; source type - 2 or 3 wires
<b>Analog Output</b>	4 to 20 mA source for each channel (1,000 ohms maximum)
<b>Relay output</b>	Individual, low (Form C), high (Form A or B) for each channel: programmable for latching/non-latching, energized/de-energized. Common fault (Form A or B): normally energized, programmable for latching/non-latching. Each relay rated at 10A/12 VAC
<b>Operational Temperature</b>	-4°F to 113°F (-20°C to 45°C)
<b>Humidity</b>	0-95% RH, non-condensing
<b>Area Classification</b>	General purpose
<b>Low/High Alarms</b>	Independently adjustable from "off" to full audible/visual indication. Can be acknowledged and activated for rising/falling levels
<b>Calibration Time Out</b>	Programmable up to 99 seconds (disablement available)
<b>Alarm Delay</b>	Programmable up to 99 seconds (disablement available)
<b>Operating Voltage</b>	18 to 30 Vdc, 24Vdc normal
<b>Power Requirements</b>	0.25A maximum fused at 1.0A
<b>Control Card</b>	
<b>Dimensions</b>	1.6" (41mm) L x 6.8" (173mm) H x 11.35" (288mm) W
<b>Weight</b>	1.3lbs (0.6kg)
<b>Half Rack Dimensions</b>	7.1" (180mm) W x 10.6" (269mm) L x 11.2" (284mm) D
<b>Full Rack Dimensions</b>	7.1" (180mm) W x 19" (483mm) L x 11.2" (284mm) D

## Ordering Information

### Two Channel-Control Card, Model SafeTNet 2000

Configure your own Model STN2000 using the following steps:

**Step I:** Specify the type and quantity of each transmitter (featured below)  
 \*Transmitter(s) must be purchased separately. Wiring not included.

**Step II:** Specify the quantity of STN2000 control cards  
 To determine the number of cards, divide the transmitter selection by two  
 \*Each control card has inputs for receiving signals from a combination of any two transmitters.

**Step III:** Specify the size of card rack to accommodate the number of control cards  
*Half Rack* Up to four control cards with one power supply  
*Full Rack* Up to nine control cards with power supply

**Step IV:** Specify the power supply  
*Half Rack* Input: 100VAC - 230VAC Output: 50 Watts  
*Full Rack* Input: 100VAC - 230VAC Output: 150 Watts

### Available Thermo Scientific industrial hygiene gas transmitters:



**Standard Diffusion Transmitter**



**FX-SMT (LEL) (Combustible)**



**FX-SMT (Oxygen/Toxic)**



**FX-IR**

This specification sheet is for informational purposes only and is subject to change without notice. Thermo Fisher Scientific makes no warranties, expressed or implied, in this product summary.  
 © 2008 Thermo Fisher Scientific, Inc. All rights reserved Thermo Fisher Scientific, Inc.

Lit\_STN2000AQI\_12/08