



Thermo Scientific Revco® Laboratory Refrigerators and Freezers

Unrivalled cold storage protection for valuable samples and materials



Chromatography
General Purpose
Blood Bank
Plasma
Pharmacy
Enzyme
Refrigerated Incubation

Thermo Scientific Revco Laboratory Refrigerators and Freezers

Researchers worldwide protect more than two billion samples inside Thermo Scientific cold storage equipment. With proven solutions including +4°C refrigerators to -196°C cryogenic freezers and Nalgene® and Nunc™ consumables, you're free to concentrate on your work without worrying about your valuable samples.

Unrivalled sample protection

Chromatography page **6**

General Purpose page **8**

Blood Bank page **10**

Packaging - Processing

Bid on Equipment

1-847-683-7720

www.bid-on-equipment.com

Reliable, dependable performance

- The IntrLogic™ microprocessor controller, available on all +4°C refrigerators and -20°C or -30°C lab freezers, controls, measures, compares, and reports cabinet operation with digital accuracy
- All our refrigerator and freezer cabinets, including space-saving undercounter and upright models, share design and technology improvements developed through decades of experience

| Operating Range | +1°C to +8°C | to -20°C | to -30°C |
|--|--------------|----------|----------|
| Freezer Operating Temperatures | | | |
| General Purpose Refrigerators | • | | |
| Chromatography Refrigerators | • | | |
| Blood Bank Refrigerators | • | | |
| Pharmacy Refrigerators | • | | |
| Refrigerated Incubators | • | • | |
| General Purpose Freezers | | • | • |
| Plasma Freezers | | | • |
| Enzyme Freezers | | • | |
| Typical Use and Storage Applications | | | |
| General Storage | • | • | • |
| Reagents and Kits | • | | |
| Whole Blood | • | | |
| Plasma | | | • |
| Enzymes and Temperature Sensitive Materials | | • | |
| Chromatography Apparatus and Instrumentation | • | | |
| Test Samples | • | • | • |
| Biologicals | • | • | • |
| Culture Media | • | | |
| Patient Medication | • | | |
| BOD Protocols | • | | |
| Pre-Freezing | | • | • |
| Vaccines | • | • | • |
| Shelf Life Testing | • | | |

For critical storage applications, full alarm models with optional temperature recorders are strongly recommended.

Pharmacy page **12**

High Performance page **14**

Enzyme page **18**

Refrigeration Incubation page **20**

Thermo Scientific IntrLogic Controller Simplifies Operation, Improves Reliability

Intuitive
Graphics and
Microprocessor
Technology

Setpoint Security

Key-operated triple position switch for main power and alarm; locks in temperature and alarm setpoints to minimize setpoint error and prevent tampering

Instrument-Grade Components

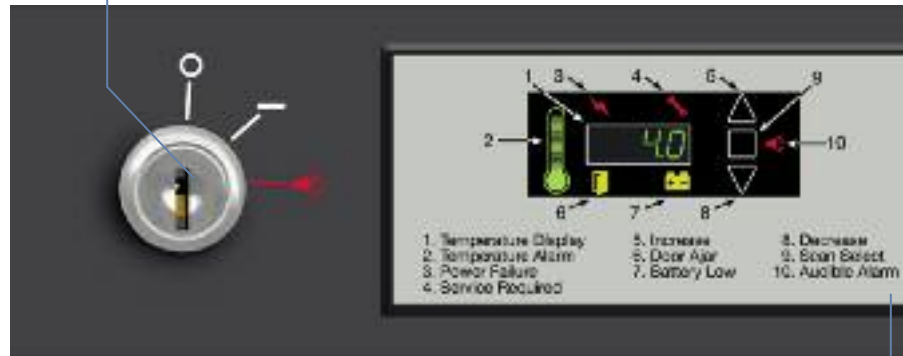
Electronic components and sub-systems are selected for performance and reliability under demanding laboratory conditions

Service Parameters

Touchpad sequence allows override access to control function defaults for troubleshooting functions

Modular Control Design

Self-contained control housing integrated into main control panel for efficient maintenance, as required



IntrLogic control panel is standard on Revco refrigerators and freezers (except BOD models).

Microprocessor-Based Control

IntrLogic microprocessor manages setpoint and actual conditions to provide the highest level of security for the stored product

Automatic Defrost System

Defrost sensor manages automatic defrost cycle (manual defrost models excluded)

IntrLogic Guide

Offers information at-a-glance for all control and display functions

Power Down Mode

During power failure digital display dims to conserve backup battery

Thermo Scientific Revco lab refrigerators and freezers include enhanced digital electronic technology designed to simplify operation and deliver greater accuracy.

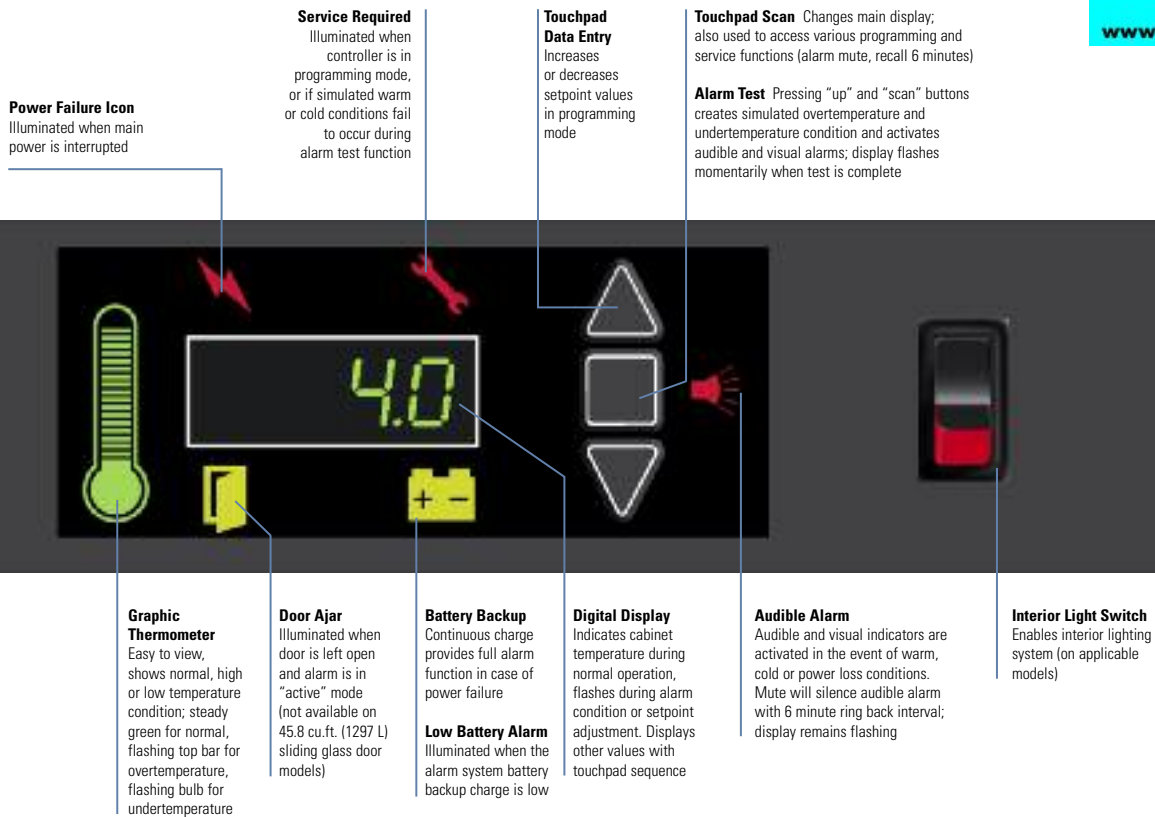
- Icon-based controls and displays include graphic references for universal operation
- Setpoint security with key-operated triple-position master switch controls power to all systems for added safety
- A graphic thermometer confirms proper operation at-a-glance, shows normal, high or low temperature condition; steady green for normal, flashing top bar for overtemperature, flashing bulb for undertemperature
- Auto defrost models feature an advanced defrost sensor which manages the defrost cycle, minimizing trace amounts of frost build-up to maintain refrigeration coil efficiency

IntrLogic Control Alarm Sequence

| Event | Audible Alarm | Visual Alarm | Self Corrected Event | Remote Alarm Contacts Activated | |
|------------------|---------------|--------------|----------------------|---------------------------------|-----|
| Overtemperature | continuous* | | | slow flash, icon only | yes |
| Undertemperature | continuous* | | | slow flash, icon only | yes |
| Power Loss | continuous* | | | slow flash, icon only | yes |
| Door Ajar | delay | | | | no |
| Low Battery | no | | | | no |
| Service Required | no | | | | no |

Audible and visual warnings for door ajar, low alarm battery, system maintenance and power failure provide immediate status of critical functions. A push-button alarm test verifies sensor continuity, while the battery backup assures system readiness. The enlarged digital display improves visibility, taking the guesswork out of setpoint and performance management.

*Mute will silence audible alarm with 6-minute ring back interval; display remains flashing. Moving triple position key switch to middle position disables alarm and audible and visual warnings.



Power Failure Icon
Illuminated when main power is interrupted

Service Required
Illuminated when controller is in programming mode, or if simulated warm or cold conditions fail to occur during alarm test function

Touchpad Data Entry
Increases or decreases setpoint values in programming mode

Touchpad Scan Changes main display; also used to access various programming and service functions (alarm mute, recall 6 minutes)

Alarm Test Pressing "up" and "scan" buttons creates simulated overtemperature and undertemperature condition and activates audible and visual alarms; display flashes momentarily when test is complete

Graphic Thermometer
Easy to view, shows normal, high or low temperature condition; steady green for normal, flashing top bar for overtemperature, flashing bulb for undertemperature

Door Ajar
Illuminated when door is left open and alarm is in "active" mode (not available on 45.8 cu.ft. (1297 L) sliding glass door models)

Battery Backup
Continuous charge provides full alarm function in case of power failure

Low Battery Alarm
Illuminated when the alarm system battery backup charge is low

Digital Display
Indicates cabinet temperature during normal operation, flashes during alarm condition or setpoint adjustment. Displays other values with touchpad sequence

Audible Alarm
Audible and visual indicators are activated in the event of warm, cold or power loss conditions. Mute will silence audible alarm with 6 minute ring back interval; display remains flashing

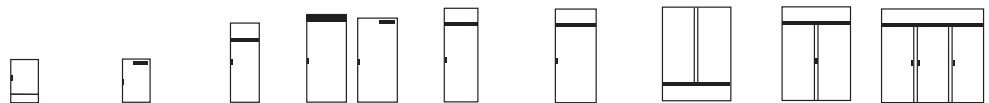
Interior Light Switch
Enables interior lighting system (on applicable models)

Laboratory Quality Cabinet Construction

Our refrigerators and freezers are available in 10 sizes, from compact 4.9 cu.ft. (133 L) undercounter models to spacious, triple-door 78.8 cu.ft. (2231 L) cabinets. All models are built to meet UL, CUL, CE and TUV standards for safety.

- Hermetically sealed refrigeration compressor, air-cooled condenser and automatic condensate removal for auto defrost models
- An efficient, high-capacity air circulation system optimizes top-to-bottom temperature uniformity, accelerates temperature recovery following door openings, and accommodates insertion of warm product
- CFC-free refrigerants, insulation and product packaging
- Depending on model selection, standard or optional shelves, drawers, temperature recorders, cabinet casters and other accessories are available to meet most laboratory needs

Laboratory Refrigerator and Freezer Selection Guide



| Automatic Defrost Models | Cu.Ft. (L) | 4.9 (133) | 6.1 (173) | 11.5 (326) | 20 (566) | 23.3 (659) | 29.2 (826) | 45.8 (1297) | 51.1 (1447) | 78.8 (2231) |
|---|------------|-----------|-----------|------------|----------|------------|------------|-------------|-------------|-------------|
| Chromatography Refrigerators | | | | | | IntrLogic | IntrLogic | IntrLogic | IntrLogic | IntrLogic |
| General Purpose Lab Refrigerators | IntrLogic | | | IntrLogic | | IntrLogic | IntrLogic | IntrLogic | IntrLogic | IntrLogic |
| Blood Bank Refrigerators | IntrLogic | | | IntrLogic | | IntrLogic | IntrLogic | | IntrLogic | |
| Pharmacy Refrigerators | | | | IntrLogic | | IntrLogic | IntrLogic | | IntrLogic | |
| General Purpose Lab Freezers, -30°C | IntrLogic | | | IntrLogic | | IntrLogic | IntrLogic | | IntrLogic | IntrLogic |
| Plasma Freezers, -30°C | IntrLogic | | | IntrLogic | | IntrLogic | IntrLogic | | IntrLogic | |
| Refrigerated Incubators, Programmable | | | | | micro | | | | | |
| Refrigerated Incubators, Non-Programmable | | | micro | | micro | | | | | |
| Manual Defrost Models | | | | | | | | | | |
| Enzyme Freezer, -20°C | | | | | | IntrLogic | | | | |
| General Purpose Freezer, -20°C | | | | | | IntrLogic | | | | |

Remote alarm contacts are included on all models.

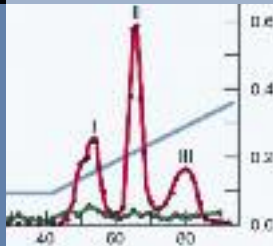
Thermo Scientific Revco Chromatography Refrigerators

Featuring IntrLogic
Microprocessor
Control

Our chromatography refrigerators are designed for a variety of applications requiring close temperature control, full access to chromatography instrumentation and easy set-up of instrumentation and apparatus within the chamber.



REC-7504 chromatography refrigerator. Casters and glass doors are standard. Shown with optional temperature recorder.



Our chromatography refrigerators feature the IntrLogic microprocessor control system, positive airflow systems, industrial quality cabinet construction and extra-strength refrigeration compressors selected for industrial, clinical and scientific use.

IntrLogic Microprocessor Control

Our REC series refrigerators feature enhanced digital electronic technology designed to simplify operation and deliver greater accuracy (see pages 4 and 5).

- Adjustable temperature control, range +1°C to +8°C, factory pre-set to +4°C
- Icon-based controls and displays include graphic references for universal operation
- Setpoint security with key-operated triple-position master switch controls power to all systems for added safety
- Audible/visual warnings for over-temperature, undertemperature and power failure, with visual status reports on critical functions

- Graphic thermometer confirms proper operation at-a-glance, shows normal, high or low temperature condition; steady green for normal, flashing top bar for overtemperature, flashing bulb for undertemperature
- Advanced defrost sensor manages the defrost cycle, minimizing trace amounts of frost build-up to maintain refrigeration coil efficiency
- Enlarged digital display, resolution to within 0.1°C, improves visibility
- Alarm silence, ringback and automatic reset functions
- Push-button alarm test verifies sensor continuity
- Battery backup assures control panel function during power failure
- Remote alarm contacts are included on all models

Chromatography Refrigerators

Temperature Range: +1°C to +8°C, factory preset to +4°C (auto defrost)

| Model No. | Cu.Ft. (L) | Voltage (Hz) | Amps/Breaker (Plug) | Door | Full Shelves | Half Shelves | Int. Dimensions* H x D x W inches (mm) | Ext. Dimensions* H x D x W inches (mm) | Ship Weight lb (kg) |
|-------------------------------------|----------------|--------------------------------------|--|------------------------|--------------|--------------|---|---|---------------------|
| REC-2304A REC-2304D REC-2304V | 23.3 (659) | 115 (60) 208/230 (60) 230 (50) | 9.4/15 (P1) 6.0/15 (P4) 6.0/15 (P7) | single, glass | 0 | 2 | 58.0 x 29.0 x 24.0 (1470 x 730 x 610) | 79.1 x 36.2 x 28.0 (2010 x 920 x 720) | 425 (193) |
| REC-3004A REC-3004D REC-3004V | 29.2 (82.6) | 115 (60) 208/230 (60) 230 (50) | 9.4/15 (P1) 6.0/15 (P4) 6.0/15 (P7) | single, glass | 0 | 2 | 58.0 x 29.0 x 30.0 (1470 x 730 x 760) | 79.1 x 36.2 x 34.0 (2010 x 920 x 870) | 435 (197) |
| REC-4504A REC-4504D REC-4504V | 45.8 (1297) | 115 (60) 208/230 (60) 230 (50) | 15.0/20 (P2) 8.5/15 (P4) 8.5/15 (P7) | double, sliding, glass | 4 | 2 | 58.0 x 26.0 x 52.5 (1470 x 660 x 1330) | 79.1 x 33.0 x 56.5 (2010 x 840 x 1440) | 670 (304) |
| REC-5004A REC-5004D REC-5004V | 51.1 (1447) | 115 (60) 208/230 (60) 230 (50) | 15.0/20 (P2) 8.5/15 (P4) 8.5/15 (P7) | double, glass | 4 | 2 | 58.0 x 29.0 x 52.5 (1470 x 730 x 1330) | 79.1 x 36.2 x 56.5 (2010 x 920 x 1440) | 580 (263) |
| REC-7504A REC-7504D REC-7504V | 78.8 (2231) | 115 (60) 208/230 (60) 230 (50) | 16.0/20 (P2) 10.5/15 (P4) 10.5/15 (P7) | triple, glass | 8 | 2 | 58.0 x 29.0 x 81.0 (1470 x 730 x 2050) | 79.1 x 36.2 x 85.0 (2010 x 920 x 2160) | 965 (438) |

* Published interior volumes are nominal; useable cu.ft. (L) capacities may be offset by shelves, drawers, blower coils, or cabinet protrusions. For specific cabinet dimensions and allowances, or for verification of clearance tolerances, contact our sales representative. Product performance may be affected by ambient temperature conditions, humidity conditions, sample loading preferences, and frequency of door openings. Contact our sales representative for specific inquiries regarding your application.

Cabinet Construction and Performance

- All refrigeration and control systems are top-mounted (except sliding glass door model REC-4504, base mounted)
- Door lock provision on all models
- One duplex vapor-proof interior outlet, continuous on; separate power cord provided
- Door-activated light switch on all models except REC-4504
- Model REC-4504 has independent switch activated lights only
- Epoxy-coated, open wire shelves, adjustable in 1" (25 mm) increments; no tools required
- Multi-pane glass door(s) with spring loaded door closures and a 90° stay-open feature (except sliding door model REC-4504)
- Positive, forced-air circulation maintains temperature uniformity at all shelf levels
- Peripheral closed-cell door gasket(s) maintain temperature integrity

- Two access ports, 2" (50 mm) diameter, with hinged covers
- Keyed door locks for security (except model REC-4504)
- 2" (50 mm) casters, 2 locking, 2 non-locking, factory installed
- Separate power cord for interior outlets on models REC-4504 and REC-7504
- High-density, CFC-free urethane foam insulation protects cabinet from ambient temperature fluctuations and minimizes operating costs
- Interior and exterior surfaces are finished with a high-impact powder paint coating

Refrigeration System

- Heavy duty, industrial-grade, hermetically sealed compressors
- Automatic defrost for optimum cooling capacity
- Automatic condensate removal; no drain lines required

Optional Accessories

- Voltage safeguard, free standing
- Temperature recorder, 6" (152 mm) circular chart, 7-day drive
- Additional access port, 2" (50 mm) diameter, with cover
- Stainless steel interior and exterior surfaces
- Additional shelves, full or half size
- Heated glass doors and door swing variations available on most models



REC-4504 chromatography refrigerator with sliding glass doors as standard. Shown with optional temperature recorder.

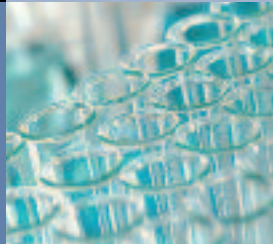
Thermo Scientific Revco High Performance Laboratory Refrigerators

Featuring IntrLogic Microprocessor Control

Our selection of general purpose laboratory refrigerators offers cabinet sizes to fit a variety of space needs and storage volume requirements.



Left to right: Models REL-2304, REL-404 and REL-5004. Shown with optional casters and temperature recorders. Optional glass doors are available. Model REL-404 shown with optional finished countertop.



Our REL series refrigerators feature the IntrLogic microprocessor control system, positive airflow systems, industrial quality cabinet construction and extra-strength refrigeration compressors selected for industrial, clinical and scientific use.

IntrLogic Microprocessor Control

Our REL series lab refrigerators feature enhanced digital electronic technology designed to simplify operation and deliver greater accuracy (see pages 4 and 5).

- Adjustable temperature control, range +1°C to +8°C, factory pre-set to +4°C
- Icon-based controls and displays include graphic references for universal operation
- Setpoint security with key-operated triple-position master switch controls power to all systems for added safety
- Audible/visual warnings for over-temperature, undertemperature and power failure, with visual status reports on critical functions

- Graphic thermometer confirms proper operation at-a-glance, shows normal, high or low temperature condition; steady green for normal, flashing top bar for overtemperature, flashing bulb for undertemperature
- Advanced defrost sensor manages the defrost cycle, minimizing trace amounts of frost build-up to maintain refrigeration coil efficiency
- Enlarged digital display, resolution to within 0.1°C, improves visibility
- Alarm silence, ringback and automatic reset functions
- Push-button alarm test verifies sensor continuity
- Battery backup assures control panel function during power failure
- Remote alarm contacts are included on all models



REL-404 undercounter refrigerator.



General Purpose Laboratory Refrigerators

Temperature Range: +1°C to +8°C, factory preset to +4°C (auto defrost)

| Model No. | Cu.Ft. (L) | Voltage (Hz) | Amps/Breaker (Plug) | Cabinet | Door | Shelves | Int. Dimensions* H x D x W inches (mm) | Ext. Dimensions* H x D x W inches (mm) | Ship Weight lb (kg) |
|-------------------------------------|----------------|--------------------------------------|--|--------------|-----------------------|---------|---|---|---------------------|
| REL-404A REL-404V | 4.9 (133) | 115 (60) 230 (50) | 8.0/15 (P1) 6.0/15 (P7) | undercounter | single, solid | 3 | 20.0 x 20.0 x 20.0 (500 x 500 x 500) | 33.4 x 26.0 x 24.0 (850 x 660 x 610) | 212 (96) |
| REL-1204A REL-1204V | 11.5 (326) | 115 (60) 230 (50) | 9.4/15 (P1) 6.0/15 (P7) | space saver | single, solid | 4 | 52.0 x 21.0 x 20.0 (1320 x 530 x 500) | 71.9 x 28.8 x 24.0 (1830 x 740 x 610) | 280 (127) |
| REL-2304A REL-2304D REL-2304V | 23.3 (659) | 115 (60) 208/230 (60) 230 (50) | 9.4/15 (P1) 6.0/15 (P4) 6.0/15 (P7) | upright | single, solid | 4 | 58.0 x 29.0 x 24.0 (1470 x 730 x 610) | 77.5 x 35.5 x 28.0 (1970 x 910 x 720) | 405 (184) |
| REL-3004A REL-3004D REL-3004V | 29.2 (826) | 115 (60) 208/230 (60) 230 (50) | 9.4/15 (P1) 6.0/15 (P4) 6.0/15 (P7) | upright | single, solid | 4 | 58.0 x 29.0 x 30.0 (1470 x 730 x 760) | 77.5 x 35.5 x 34.0 (1970 x 910 x 870) | 435 (197) |
| REL-4504A REL-4504D REL-4504V | 45.8 (1297) | 115 (60) 208/230 (60) 230 (50) | 15.0/20 (P2) 8.5/15 (P4) 8.5/15 (P7) | upright | double, sliding glass | 8 | 58.0 x 26.0 x 52.0 (1470 x 660 x 1320) | 77.5 x 35.0 x 56.5 (1970 x 890 x 1440) | 670 (304) |
| REL-5004A REL-5004D REL-5004V | 51.1 (1447) | 115 (60) 208/230 (60) 230 (50) | 15.0/20 (P2) 8.5/15 (P4) 8.5/15 (P7) | upright | double, solid | 8 | 58.0 x 29.0 x 52.0 (1470 x 730 x 1320) | 77.5 x 35.5 x 56.5 (1970 x 910 x 1440) | 585 (265) |
| REL-7504A REL-7504D REL-7504V | 78.8 (2231) | 115 (60) 208/230 (60) 230 (50) | 16.0/20 (P2) 10.5/15 (P4) 10.5/15 (P7) | upright | triple, solid | 12 | 58.0 x 29.0 x 81.0 (1470 x 730 x 2050) | 77.5 x 35.5 x 85.0 (1970 x 910 x 2160) | 805 (365) |

* Published interior volumes are nominal; useable cu. ft. (L) capacities may be offset by shelves, drawers, blower coils, or cabinet protrusions. For specific cabinet dimensions and allowances, or for verification of clearance tolerances, contact our sales representatives. Product performance may be affected by ambient temperature conditions, humidity conditions, sample loading preferences, and frequency of door openings. Contact our sales representatives for specific inquiries regarding your application.

Cabinet Construction and Inventory System

- High-density, CFC-free urethane foam insulation protects cabinet from ambient temperature fluctuations and minimizes operating costs
- Positive, forced-air circulation maintains temperature uniformity at all shelf levels
- Directional airflow assures quick recovery after door openings
- Interior cabinet lights with door-activated on/off switch, plus independent switch on control panel for 11.5 cu.ft. (326 L) and larger models
- Model REL-4504 features independent switch activated lights only; under-counter model REL-404 does not have lights
- Self-closing doors close against closed-cell peripheral gasket
- Door locking provision on all models except REL-4504
- Full-length door handle(s) on all models except sliding door model REL-4504

- Interior and exterior surfaces are finished with a high-impact powder paint coating
- Epoxy-coated, open wire shelves, adjustable in 1" (25 mm) increments; no tools required
- 2" (50 mm) casters standard on model REL-4504
- Adjustable leveling feet standard
- 1" (25 mm) access port standard on model REL-404

Refrigeration System

- Heavy duty, industrial-grade, hermetically sealed compressors
- Automatic defrost maintains optimum cooling capacity
- Automatic condensate removal; no drain lines required

Optional Accessories

- Voltage safeguard, free standing
- Built-in 6" (152 mm), 7-day circular chart recorder (free-standing on REL-404)

- Access port, 2" (50 mm) diameter, with cover
- Stainless steel interior and exterior surfaces
- 2" (50 mm) casters
- Additional shelves
- Full-view glass doors, double pane construction (standard on REL-4504)
- Heated glass doors and door swing variations are available on most models
- Finished countertop for REL-404

REL-5004 refrigerator shown with optional casters and temperature recorder.



Thermo Scientific Revco Blood Bank Refrigerators

Featuring IntrLogic
Microprocessor
Control

Our blood bank refrigerators are designed to meet strict requirements established by the AABB, ANRC and FDA for storage of whole blood and blood components.

The complete selection of +4°C refrigerators feature simplified push-button alarm test functions and reliable, field-proven refrigeration systems.



Upright blood bank refrigerators feature roll-out drawers and temperature recorders as standard. Model shown REB-5004.



Our REB series refrigerators feature the IntrLogic microprocessor control system, positive airflow systems, industrial quality cabinet construction and extra-strength refrigeration compressors selected for industrial, clinical and scientific use.

IntrLogic Microprocessor Control

Our REB blood bank refrigerators feature enhanced digital electronic technology designed to simplify operation and deliver greater accuracy (see pages 4 and 5).

- Adjustable temperature control, range +1°C to +8°C, factory pre-set to +4°C
- Icon-based controls and displays include graphic references for universal operation
- Setpoint security with key-operated triple-position master switch controls power to all systems for added safety
- Audible/visual warnings for over-temperature, undertemperature and power failure, with visual status reports on critical functions
- Alarm setpoints pre-set to warn of temperature deviation at +5.5°C overtemperature and +1.5°C undertemperature

- Graphic thermometer confirms proper operation at-a-glance, shows normal, high or low temperature condition; steady green for normal, flashing top bar for overtemperature, flashing bulb for undertemperature
- Advanced defrost sensor manages the defrost cycle, minimizing trace amounts of frost build-up to maintain refrigeration coil efficiency
- Enlarged digital display, resolution to within 0.1°C, improves visibility
- Alarm silence, ringback and automatic reset functions
- Push button alarm test verifies sensor continuity
- Battery backup assures control panel function during power failure
- Extra-long alarm probe lead allows manual testing and verification
- Remote alarm contacts are included on all models



REB-404 undercounter blood bank refrigerator shown with optional finished countertop



Packaging - Processing
Bid on Equipment
1-847-683-7720
www.bid-on-equipment.com

Blood Bank Refrigerators

Temperature Range: +1°C to +8°C, factory preset to +4°C (auto defrost)

| Model No. | Cu.Ft./L (Blood Bag Capacity)** | Voltage (Hz) | Amps/ Breaker (Plug) | Cabinet | Door | Drawers | Int. Dimensions* H x D x W inches (mm) | Ext. Dimensions* H x D x W inches (mm) | Ship Weight lb (kg) |
|-------------------------------------|---------------------------------------|--------------------------------------|--|----------------|------------------|---------|--|--|------------------------|
| REB-404A REB-404V | 4.9/133 (48) | 115 (60) 230 (50) | 8.0/15 (P1) 6.0/15 (P7) | undercounter | single, solid | 2 | 20.0 x 20.0 x 20.0 (500 x 500 x 500) | 33.4 x 26.0 x 24.0 (850 x 660 x 610) | 212 (96) |
| REB-1204A REB-1204V | 11.5/326 (120) | 115 (60) 230 (50) | 9.4/15 (P1) 6.0/15 (P7) | space saver | single, glass | 5 | 52.0 x 21.0 x 20.0 (1320 x 530 x 500) | 71.9 x 28.8 x 24.0 (1830 x 740 x 610) | 320 (145) |
| REB-2304A REB-2304D REB-2304V | 23.3/659 (288) | 115 (60) 208/230 (60) 230 (50) | 9.4/15 (P1) 6.0/15 (P4) 6.0/15 (P7) | upright | single, glass | 6 | 58.0 x 29.0 x 24.0 (1470 x 730 x 610) | 77.5 x 35.5 x 28.0 (1970 x 910 x 720) | 470 (213) |
| REB-3004A REB-3004D REB-3004V | 29.2/826 (360) | 115 (60) 208/230 (60) 230 (50) | 9.4/15 (P1) 6.0/15 (P4) 6.0/15 (P7) | upright | single, glass | 6 | 58.0 x 29.0 x 30.0 (1470 x 730 x 760) | 77.5 x 35.5 x 34.0 (1970 x 910 x 870) | 505 (227) |
| REB-5004A REB-5004D REB-5004V | 51.1/1447 (576) | 115 (60) 208/230 (60) 230 (50) | 15.0/20 (P2) 8.5/15 (P4) 8.5/15 (P7) | upright | double, glass | 12 | 58.0 x 29.0 x 52.0 (1470 x 730 x 1320) | 77.5 x 35.5 x 56.5 (1970 x 910 x 1440) | 790 (359) |

* Published interior volumes are nominal; useable cu.ft. (L) capacities may be offset by shelves, drawers, blower coils, or cabinet protrusions. For specific cabinet dimensions and allowances, or for verification of clearance tolerances, contact our sales representative. Product performance may be affected by ambient temperature conditions, humidity conditions, sample loading preferences, and frequency of door openings. Contact our sales representative for specific inquiries regarding your application.

** Nominal capacity based on 450 mL whole blood bags.

Cabinet Construction and Inventory System

- Full-extension adjustable stainless steel drawers
- Dual-pane glass viewing door(s), insulated to prevent condensation (optional on REB-404)
- High-density CFC-free urethane foam insulation protects cabinet from ambient temperature fluctuations and minimizes operating costs
- Positive, forced-air circulation to maintain temperature uniformity at all drawer levels
- Directional air flow assures quick recovery after door openings
- Interior cabinet lights with door activated on/off switch, plus independent switch on control panel (except on 4.9 cu.ft. (133 L) models)
- Self-closing doors close against closed-cell peripheral gasket
- Door locking provision on all models
- 1" (25 mm) access port standard on REB-404

- Adjustable leveling feet standard; optional casters are available
- All models feature a smooth, scratch resistant painted interior and exterior surface for easy cleaning

Temperature Recorders

- Built-in 6" (152 mm), 7-day circular chart recorder standard (optional free-standing recorder on REB-404)
- Provides permanent record of storage conditions

Refrigeration System

- Heavy duty, industrial-grade, hermetically sealed compressors
- Automatic defrost for optimum cooling capacity
- Automatic condensate removal; no drain lines required

Optional Accessories

- Voltage safeguard, free-standing
- Free-standing temperature recorder for REB-404

- Access port, 2" (50 mm) diameter, with cover [standard 1" (25 mm) port for REB-404]
- Stainless steel interior and exterior surfaces
- 2" (50 mm) casters
- Additional drawers, stainless steel drawer dividers
- Heated glass doors and door swing variations available on most models
- Finished countertop for REB-404



Slimline REB-1204 blood bank refrigerator.

Thermo Scientific Revco Pharmacy Refrigerators

Featuring IntraLogic
Microprocessor
Control

Configured for accurate storage and easy retrieval of pharmacy products, our RPR pharmacy refrigerators feature full extension stainless steel roll-out drawers. Developed for stable temperature control over a range of +1°C to +8°C, these refrigerators are available in four sizes.



Our pharmacy refrigerators are designed to provide stable temperature control and allow efficient inventory management. Model shown: RPR-3004 with full extension roll-out drawers and full view glass door.



Our RPR series pharmacy refrigerators feature the IntraLogic microprocessor control system, positive airflow systems, industrial quality cabinet construction and extra-strength refrigeration compressors selected for industrial, clinical and scientific use.

IntraLogic Microprocessor Control

Our RPR pharmacy refrigerators feature enhanced digital electronic technology designed to simplify operation and deliver greater accuracy (see pages 4 and 5).

- Adjustable temperature control, range +1°C to +8°C, factory pre-set to +4°C
- Icon-based controls and displays include graphic references for universal operation
- Setpoint security with key-operated triple-position master switch controls power to all systems for added safety
- Audible/visual warnings for over-temperature, undertemperature and power failure, with visual status reports on critical functions
- Graphic thermometer confirms proper operation at-a-glance, shows normal, high or low temperature condition; steady green for normal, flashing top bar for overtemperature, flashing bulb for undertemperature
- Advanced defrost sensor manages the defrost cycle, minimizing trace amounts of frost build-up to maintain refrigeration coil efficiency
- Enlarged digital display, resolution to within 0.1°C, improves visibility
- Alarm silence, ringback and automatic reset functions
- Push button alarm test verifies sensor continuity
- Battery backup assures control panel function during power failure
- Remote alarm contacts are included on all models

Pharmacy Refrigerators

Temperature Range: +1°C to +8°C, factory preset to +4°C (auto defrost)

| Model No. | Cu.Ft. (L) | Voltage (Hz) | Amps/Breaker (Plug) | Cabinet | Door | Drawers | Int. Dimensions* H x D x W inches (mm) | Ext. Dimensions* H x D x W inches (mm) | Ship Weight lb (kg) |
|-------------------------------------|----------------|--------------------------------------|--|---------|------------------|---------|---|---|---------------------|
| RPR-1204A RPR-1204V | 11.5 (326) | 115 (60) 230 (50) | 9.4/15 (P1) 6.0/15 (P7) | upright | single, glass | 5 | 52.0 x 21.0 x 20.0 (1320 x 530 x 500) | 71.9 x 28.8 x 24.0 (1830 x 740 x 610) | 320 (145) |
| RPR-2304A RPR-2304D RPR-2304V | 23.3 (659) | 115 (60) 208/230 (60) 230 (50) | 9.4/15 (P1) 6.0/15 (P4) 6.0/15 (P7) | upright | single, glass | 6 | 58.0 x 29.0 x 24.0 (1470 x 730 x 610) | 77.5 x 35.5 x 28.0 (1970 x 910 x 720) | 470 (213) |
| RPR-3004A RPR-3004D RPR-3004V | 29.2 (826) | 115 (60) 208/230 (60) 230 (50) | 9.4/15 (P1) 6.0/15 (P4) 6.0/15 (P7) | upright | single, glass | 6 | 58.0 x 29.0 x 30.0 (1470 x 730 x 760) | 77.5 x 35.5 x 34.0 (1970 x 910 x 870) | 505 (227) |
| RPR-5004A RPR-5004D RPR-5004V | 51.1 (1447) | 115 (60) 208/230 (60) 230 (50) | 15.0/20 (P2) 8.5/15 (P4) 8.5/15 (P7) | upright | double, glass | 12 | 58.0 x 29.0 x 52.0 (1470 x 730 x 1320) | 77.5 x 35.5 x 56.5 (1970 x 910 x 1440) | 790 (359) |

* Published interior volumes are nominal; useable cu.ft. (L) capacities may be offset by shelves, drawers, blower coils, or cabinet protrusions. For specific cabinet dimensions and allowances, or for verification of clearance tolerances, contact our sales representative. Product performance may be affected by ambient temperature conditions, humidity conditions, sample loading preferences, and frequency of door openings. Contact our sales representative for specific inquiries regarding your application.

Cabinet Construction and Inventory System

- Full extension stainless steel drawers, fully adjustable
- Full view glass door(s), double pane construction eliminates condensation; spring-loaded closures include 90° stay open feature
- High-density, CFC-free urethane foam insulation protects cabinet from ambient temperature fluctuations and minimizes operating costs
- Positive, forced-air circulation maintains temperature uniformity at all shelf levels
- Directional air flow assures quick recovery after door openings
- Interior cabinet lights with door activated on/off switch, plus independent switch on control panel
- Self-closing doors close against closed-cell peripheral gasket

- Door locking provision on all models
- Adjustable leveling feet standard; optional casters are available
- Smooth scratch resistant painted interior and exterior surfaces for easy cleaning

Refrigeration System

- Heavy duty, industrial-grade, hermetically sealed compressors
- Automatic defrost maintains optimum cooling capacity
- Automatic condensate removal; no drain lines required

Optional Accessories

- Voltage safeguard, free standing
- Built-in 6" (152 mm), 7-day circular chart recorder
- Access port, 2" (50 mm) diameter, with cover
- Stainless steel interior and exterior surfaces
- 2" (50 mm) casters

- Additional shelves
- Additional drawers
- Heated glass doors and door swing variations available on most models



RPR-1204 pharmacy refrigerator, shown with optional casters and temperature recorder.

Thermo Scientific Revco -30°C High Performance Laboratory Freezers

Featuring IntrLogic Microprocessor Control

Our -30°C general laboratory freezers are designed for medical and scientific applications such as storage of reagents, pharmaceuticals, biologicals, or other commonly used laboratory materials. Models offer cabinet sizes to fit a variety of space needs and storage volume requirements.



ULT-5030 (left) and ULT-2330 (right) -30°C freezers, shown with optional casters and temperature recorder.



Our freezers feature the IntrLogic microprocessor control system, positive airflow systems, industrial quality cabinet construction and extra-strength refrigeration compressors selected for industrial, clinical and scientific use.

IntrLogic Microprocessor Control

Our ULT series lab freezers feature enhanced digital electronic technology designed to simplify operation and deliver greater accuracy (see pages 4 and 5).

- Pre-set -30°C operation
- Icon-based controls and displays include graphic references for universal operation
- Setpoint security with key-operated triple-position master switch controls power to all systems for added safety
- Audible/visual warnings for over-temperature, undertemperature and power failure, with visual status reports on critical functions

- Graphic thermometer confirms proper operation at-a-glance, shows normal, high or low temperature condition; steady green for normal, flashing top bar for overtemperature, flashing bulb for undertemperature
- Advanced defrost sensor manages the defrost cycle, minimizing trace amounts of frost build-up to maintain refrigeration coil efficiency
- Enlarged digital display, resolution to within 0.1°C, improves visibility
- Alarm silence, ringback and automatic reset functions
- Push button alarm test verifies sensor continuity
- Battery backup assures control panel function during power failure
- Remote alarm contacts are included on all models



ORDERING INFORMATION

General Purpose Laboratory Freezers

Temperature Range: -30°C (auto defrost)

| Model No. | Cu.Ft. (L) | Voltage (Hz) | Amps/Breaker (Plug) | Cabinet | Door | Shelves | Int. Dimensions* H x D x W inches (mm) | Ext. Dimensions* H x D x W inches (mm) | Ship Weight lb (kg) |
|-------------------------------------|----------------|--------------------------------------|--|----------------|------------------|---------|--|--|------------------------|
| ULT-430A ULT-430V | 4.9 (133) | 115 (60) 230 (50) | 8.0/15 (P1) 6.0/15 (P7) | undercounter | single, solid | 3 | 20.0 x 20.0 x 20.0 (500 x 500 x 500) | 33.4 x 26.0 x 24.0 (850 x 660 x 610) | 212 (96) |
| ULT-1230A ULT-1230V | 11.5 (326) | 115 (60) 230 (50) | 8.0/15 (P1) 8.0/15 (P7) | space saver | single, solid | 4 | 52.0 x 21.0 x 20.0 (1320 x 530 x 500) | 71.9 x 28.8 x 24.0 (1830 x 740 x 610) | 280 (127) |
| ULT-2330A ULT-2330D ULT-2330V | 23.3 (659) | 115 (60) 208/230 (60) 230 (50) | 16.0/20 (P2) 12.0/15 (P4) 12.0/15 (P7) | upright | single, solid | 4 | 58.0 x 29.0 x 24.0 (1470 x 730 x 610) | 77.5 x 35.5 x 28.0 (1970 x 910 x 720) | 370 (168) |
| ULT-3030A ULT-3030D ULT-3030V | 29.2 (826) | 115 (60) 208/230 (60) 230 (50) | 16.0/20 (P2) 12.0/15 (P4) 12.0/15 (P7) | upright | single, solid | 4 | 58.0 x 29.0 x 30.0 (1470 x 730 x 760) | 77.5 x 35.5 x 34.0 (1970 x 910 x 870) | 445 (202) |
| ULT-5030A ULT-5030D ULT-5030V | 51.1 (1447) | 115 (60) 208/230 (60) 230 (50) | 16.0/20 (P2) 12.0/15 (P4) 12.0/15 (P7) | upright | double, solid | 8 | 58.0 x 29.0 x 52.0 (1470 x 730 x 1320) | 77.5 x 35.5 x 56.5 (1970 x 910 x 1440) | 600 (272) |

* Published interior volumes are nominal; useable cu. ft. (L) capacities may be offset by shelves, drawers, blower coils, or cabinet protrusions. For specific cabinet dimensions and allowances, or for verification of clearance tolerances, contact our sales representative. Product performance may be affected by ambient temperature conditions, humidity conditions, sample loading preferences, and frequency of door openings. Contact our sales representative for specific inquiries regarding your application.

Cabinet Construction and Inventory System

- Cabinet capacities from 4.9 to 51.1 cu.ft. (133 to 1447 L)
- High-density, CFC-free urethane foam insulation protects cabinet from ambient temperature fluctuations and minimizes operating costs
- Positive, forced-air circulation maintains temperature uniformity at all shelf levels
- Directional air flow assures quick recovery after door openings
- Solid door with keyed door lock for added security
- Self-closing doors close against closed-cell peripheral gasket
- Door locking provision on all models
- Full-length door handle(s) on all models
- Epoxy-coated, open wire shelves, adjustable in 1" (25 mm) increments; no tools required

- Adjustable leveling feet standard; optional casters are available
- Scratch resistant painted interior and exterior finish for easy cleaning
- 1" (25 mm) access port standard on ULT-430

Refrigeration System

- Heavy duty, industrial-grade, hermetically sealed compressors
- Automatic defrost maintains optimum cooling capacity
- Automatic condensate removal; no drain lines required

Optional Accessories

- Voltage safeguard, free standing
- Built-in 6" (152 mm), 7-day circular chart recorder (free-standing on ULT-430)
- Access port 1" (25 mm) diameter, (standard on ULT-430)

- Stainless steel interior and exterior surfaces
- 2" (50 mm) casters
- Additional shelves
- Finished countertop for ULT-430



Model ULT-430 undercounter freezer, shown with optional finished countertop.

Thermo Scientific Revco -30°C Plasma Freezers

Featuring IntrLogic Microprocessor Control

Our -30°C plasma freezers are designed to meet AABB, ANRC and FDA standards for safety and performance in plasma storage. Five models offer cabinet sizes to meet a variety of space needs and storage volume requirements.



UFP-5030 (left) and UFP-1230 (right) plasma freezers are equipped with 7-day temperature recorders as standard to provide an accurate record of storage temperature.



Our -30°C plasma freezers feature the IntrLogic microprocessor control system, positive airflow systems, industrial quality cabinet construction, and extra-strength refrigeration compressors selected for demanding blood bank applications.

IntrLogic Microprocessor Control

Our plasma freezers feature enhanced digital electronic technology designed to simplify operation and deliver greater accuracy (see pages 4 and 5).

- Pre-set -30°C operation
- Icon-based controls and displays include graphic references for universal operation
- Setpoint security with key-operated triple-position master switch controls power to all systems for added safety
- Audible/visual warnings for over-temperature, undertemperature and power failure, with visual status reports on critical functions

- Graphic thermometer confirms proper operation at-a-glance, shows normal, high or low temperature condition; steady green for normal, flashing top bar for overtemperature, flashing bulb for undertemperature
- Advanced defrost sensor manages the defrost cycle, minimizing trace amounts of frost build-up to maintain refrigeration coil efficiency
- Enlarged digital display, resolution to within 0.1°C, improves visibility
- Alarm silence, ringback and automatic reset functions
- Push button alarm test verifies sensor continuity
- Battery backup assures control panel function during power failure
- Extra-long alarm probe lead allows manual testing and verification
- Remote alarm contacts are standard on all models



UFP-430 undercounter plasma freezer shown with optional finished countertop



Plasma Freezers

Temperature Range: -30°C (auto defrost)

| Model No. | Cu.Ft./L (Plasma Box Capacity)** | Voltage (Hz) | Amps/ Breaker (Plug) | Cabinet | Door | Drawers | Int. Dimensions* H x D x W inches (mm) | Ext. Dimensions* H x D x W inches (mm) | Ship Weight lb (kg) |
|-------------------------------------|--|--------------------------------------|--|----------------|------------------|---------|--|--|------------------------|
| UFP-430A UFP-430V | 4.9/133 (78) | 115 (60) 230 (50) | 8.0/15 (P1) 6.0/15 (P7) | undercounter | single, solid | 2 | 20.0 x 20.0 x 20.0 (500 x 500 x 500) | 33.4 x 26.0 x 24.0 (850 x 660 x 610) | 212 (96) |
| UFP-1230A UFP-1230V | 11.5/326 (273) | 115 (60) 230 (50) | 8.0/15 (P1) 8.0/15 (P7) | space saver | single, solid | 7 | 52.0 x 21.0 x 20.0 (1320 x 530 x 500) | 71.9 x 28.8 x 24.0 (1830 x 740 x 610) | 365 (166) |
| UFP-2330A UFP-2330D UFP-2330V | 23.3/659 (532) | 115 (60) 208/230 (60) 230 (50) | 16.0/20 (P2) 12.0/15 (P4) 12.0/15 (P7) | upright | single, solid | 7 | 58.0 x 29.0 x 24.0 (1470 x 730 x 610) | 77.5 x 35.5 x 28.0 (1970 x 910 x 720) | 425 (193) |
| UFP-3030A UFP-3030D UFP-3030V | 29.2/826 (665) | 115 (60) 208/230 (60) 230 (50) | 16.0/20 (P2) 12.0/15 (P4) 12.0/15 (P7) | upright | single, solid | 7 | 58.0 x 29.0 x 30.0 (1470 x 730 x 760) | 77.5 x 35.5 x 34.0 (1970 x 910 x 870) | 580 (263) |
| UFP-5030A UFP-5030D UFP-5030V | 51.1/1447 (1064) | 115 (60) 208/230 (60) 230 (50) | 16.0/20 (P2) 12.0/15 (P4) 12.0/15 (P7) | upright | double, solid | 14 | 58.0 x 29.0 x 52.0 (1470 x 730 x 1320) | 77.5 x 35.5 x 56.5 (1970 x 910 x 1440) | 650 (295) |

* Published interior volumes are nominal; useable cu. ft. (L) capacities may be offset by shelves, drawers, blower coils, or cabinet protrusions. For specific cabinet dimensions and allowances, or for verification of clearance tolerances, contact our sales representative. Product performance may be affected by ambient temperature conditions, humidity conditions, sample loading preferences, and frequency of door openings. Contact our sales representative for specific inquiries regarding your application.

** Nominal capacity based on 250 mL plasma boxes.

Cabinet Construction and Inventory System

- High-density, CFC-free urethane foam insulation protects cabinet from ambient temperature fluctuations and minimizes operating costs
- Positive, forced-air circulation maintains uniformity at all shelf levels
- Directional airflow assures quick recovery after door openings
- Solid door with keyed door lock for added security
- Doors are self-closing against a closed-cell peripheral gasket; doors are spring loaded on all but undercounter models
- Door locking provision on all models
- Full-length door handle on all models
- Full extension stainless steel drawers

- Adjustable leveling feet standard; optional casters are available
- Interior and exterior surfaces are finished with a high-impact powder paint coating
- 1" (25 mm) access port standard on UFP-430

Temperature Recorders

- Built-in 6" (152 mm), 7-day circular chart recorder, standard (optional free-standing on UFP-430)
- Provides permanent record of storage conditions

Refrigeration System

- Heavy duty, industrial-grade, hermetically sealed compressors
- Automatic defrost maintains optimum cooling capacity
- Automatic condensate removal; no drain lines required

Optional Accessories

- Voltage safeguard, free-standing
- Access port, 1" (25 mm) diameter
- Stainless steel interior and exterior surfaces
- 2" (50 mm) casters
- Stainless steel drawer dividers
- Finished countertop for UFP-430
- Free-standing temperature recorder for UFP-430



UFP-2330 plasma freezer shown with optional casters.



NALGENE and NUNC cryogenic storage give you everything you need to safely store precious specimens, organize freezer space and simplify sample retrieval. NALGENE and NUNC combine to provide one-stop shopping for the widest variety and highest quality of externally and internally threaded cryovials, storage boxes, lab top coolers and "Mr. Frosty" controlled rate freezing containers.

For further information regarding these products – visit www.nalgene.com or www.nuncbrand.com

Thermo Scientific Revco -20°C Enzyme and Laboratory Freezers

Featuring IntrLogic Microprocessor Control

Our manual defrost -20°C upright freezers are designed for storage applications where slight intermittent coil warming during an auto defrost cycle is not desired. Two models feature gravity convection air systems for maximum stability without blowers or fans.



The -20°C UEN-2320 enzyme freezer stores 45 enzyme bins on 9 shelves. Shown with optional casters and temperature recorder.



Our -20°C freezers feature the IntrLogic microprocessor control system, gravity air circulation, industrial quality cabinet construction, and extra-strength refrigeration compressors selected for industrial, clinical and scientific use.

The UEN-2320 enzyme freezer features an easily accessible inventory system, while the UGL-2320 general lab freezer offers flexible utility value with four-wire shelves.

IntrLogic Microprocessor Control

Our -20°C enzyme and laboratory freezers feature enhanced digital electronic technology designed to simplify operation and deliver greater accuracy (see pages 4 and 5).

- Pre-set -20°C operation
- Icon-based controls and displays include graphic references for universal operation
- Setpoint security with key-operated triple-position master switch controls power to all systems for added safety

- Audible/visual warnings for over-temperature, undertemperature and power failure, with visual status reports on critical functions
- Graphic thermometer confirms proper operation at-a-glance, shows normal, high or low temperature condition; steady green for normal, flashing top bar for overtemperature, flashing bulb for undertemperature
- Enlarged digital display, resolution to within 0.1°C, improves visibility
- Alarm silence, ringback and automatic reset functions
- Push button alarm test verifies sensor continuity
- Battery backup assures control panel function during power failure
- Remote alarm contacts are standard on all models

High impact plastic enzyme storage bins enable easily accessible, highly concentrated inventory storage. Additional bins are useful for managing loose material in general purpose applications; see Accessories section.



Enzyme Freezers

Temperature Range: -20°C (manual defrost)

| Model No. | Cu.Ft. (L) | Voltage (Hz) | Amps/Breaker (Plug) | Cabinet | Door | Shelves | Int. Dimensions* H x D x W inches (mm) | Ext. Dimensions* H x D x W inches (mm) | Ship Weight lb (kg) |
|-----------|------------|--------------|---------------------|---------|---------------|---------|--|--|------------------------|
| UEN-2320A | 23.3 (659) | 115 (60) | 13.5/20 (P2) | upright | single, solid | 9 | 58.0 x 29.0 x 24.0 (1470 x 730 x 610) | 77.5 x 35.5 x 28.0 (1970 x 910 x 720) | 425 (193) |
| UEN-2320D | | 208/230 (60) | 5.6/15 (P4) | | | | | | |
| UEN-2320V | | 230 (50) | 5.6/15 (P7) | | | | | | |

General Purpose Freezers

Temperature Range: -20°C (manual defrost)

| Model No. | Cu.Ft. (L) | Voltage (Hz) | Amps/Breaker (Plug) | Cabinet | Door | Shelves | Int. Dimensions* H x D x W inches (mm) | Ext. Dimensions* H x D x W inches (mm) | Ship Weight lb (kg) |
|-----------|------------|--------------|---------------------|---------|--------|---------|--|--|------------------------|
| UGL-2320A | 23.3 (659) | 115 (60) | 13.5/20 (P2) | upright | single | 4 | 58.0 x 29.0 x 24.0 (1470 x 730 x 610) | 77.5 x 35.5 x 28.0 (1970 x 910 x 720) | 425 (193) |
| UGL-2320D | | 208/230 (60) | 5.6/15 (P4) | solid | | | | | |
| UGL-2320V | | 230 (50) | 5.6/15 (P7) | | | | | | |

* Published interior volumes are nominal; useable cu.ft. (L) capacities may be offset by shelves, drawers, blower coils, or cabinet protrusions. For specific cabinet dimensions and allowances, or for verification of clearance tolerances, contact our sales representative. Product performance may be affected by ambient temperature conditions, humidity conditions, sample loading preferences, and frequency of door openings. Contact our sales representative for specific inquiries regarding your application.

Cabinet Construction

- Upright 23.3 cu.ft. (659 L) cabinet
- High-density, CFC-free urethane foam insulation protects cabinet from ambient temperature fluctuations and minimizes operating costs
- Solid door with keyed door lock for added security
- Self-closing door closes against closed-cell peripheral gasket
- Door locking provision on all models
- Full-length door handle
- Adjustable leveling feet standard; optional casters are available
- Scratch resistant painted interior and exterior finish for easy cleaning

Inventory System

- Epoxy-coated, open wire shelves, adjustable in 1" (25 mm) increments; no tools required
- Model UEN-2320 Enzyme Freezer includes nine shelves with enzyme storage system of five bins per shelf, maximum 45 bins; labels not provided
- Model UGL-2320 Freezer includes four epoxy-coated shelves, standard

Refrigeration System

- Heavy duty, industrial-grade, hermetically sealed compressors
- Manual defrost

Optional Accessories

- Voltage safeguard, free-standing
- Built-in 6" (152 mm), 7-day circular chart recorder
- Access port, 1" (25 mm) diameter
- Stainless steel exterior
- 2" (50 mm) casters
- Additional shelves
- Additional bins



UGL-2320 General Purpose -20°C freezer shown with optional casters and temperature recorder.

Accessories



Productive use of our refrigerator or freezer can be enhanced with accessories specially designed to improve utility and convenience. Many accessories are factory installed and must be specified with your original order.

Voltage safeguard

Field installed accessories may require the services of a factory authorized technician.

Some accessories or options may affect refrigerator or freezer performance; for more information contact your Sales Representative.

Voltages and Serial Numbers

Serial number tags on all our Revco products contain model numbers and voltage information needed for accurate selection of accessories ordered for field installation.

- It is recommended that accessories be ordered when your refrigerator or freezer is ordered
- Factory-installed accessories allow proper set-up without power-down or emptying the cabinet

Validation Testing Program

Validation testing services in advance of shipment can accelerate in-house FDA Installation Qualification (IQ) and Operation Qualification (OQ) programs. Validation services include documentation and performance reports, compressor and sub-system component specifications, microprocessor flow diagrams, software specifications and more. For more details, contact your sales representative.

Certification of Calibration

Control, alarm and temperature recording systems are systematically calibrated at the factory for accurate performance. An optional Certificate of Calibration to an NIST (National Institute of Standards and Technology, formerly National Bureau of Standards) traceable instrument includes a model number and serial number certificate and single point

calibration. Multiple point calibration is also available. Calibration certificates must be requested when ordering.

Catalog No. 6916-2

Glass Doors

Solid doors are offered standard on most refrigerators unless otherwise specified. Optional dual-pane glass doors must be specified when ordering. Contact your Sales Representative for information on heated glass doors.

Shelves

Additional epoxy-coated, open-wire shelves are designed to fit individual cabinets; shelves are available in full- and half-sizes. Undercounter models use full-size only.

| Shelves | | | | | | |
|------------------------------------|----------------|------------|------------|------------|-------------|-------------|
| Nominal Cabinet Volume, Cu.Ft. (L) | 4.9 (133) | 11.5 (326) | 23.3 (659) | 29.2 (826) | 45.8 (1297) | 78.8 (2231) |
| Shelves | Catalog Number | | | | | |
| Epoxy-coated, Full-Size | 7125 | | 6695 | | 6696 | |
| Epoxy-coated, Half-Size | n/a | | 6697 | | 6698 | |
| Epoxy-coated, Full-Size Only | 6202-1 | | 6695-1 | | 6696-1 | |

| Door Options Selection Chart | | | | | | |
|------------------------------|--------------|----------------|-----------|-----------|------------|------------|
| Cu.Ft. (L) | 4.9(133) | 11.5(326) | 23.3(659) | 29.2(826) | 51.1(1447) | 78.8(2231) |
| Swing | Type | Catalog Number | | | | |
| LH | solid | 7119 | 6995 | 6997 | 6999 | |
| | glass | 7123 | 6996 | 6998 | 7000 | |
| | heated glass | | 7073 | 7075 | 7087 | |
| RH | solid | std | std | std | std | |
| | glass | 7118 | 7066 | 7012 | 7013 | |
| | heated glass | | 7074 | 7086 | 7088 | |
| LH/LH | solid | | | | 7001 | |
| | glass | | | | 7067 | |
| | heated glass | | | | 7089 | |
| RH/RH | solid | | | | 7068 | |
| | glass | | | | 7069 | |
| | heated glass | | | | 7090 | |
| LH/RH | solid | | | | std | |
| | glass | | | | 7014 | |
| | heated glass | | | | 7091 | |
| LH/LH/LH | solid | | | | | 7070 |
| | glass | | | | | 7071 |
| | heated glass | | | | | 7093 |
| RH/RH/RH | solid | | | | | 7072 |
| | glass | | | | | 7008 |
| | heated glass | | | | | 7083 |
| LH/LH/RH | solid | | | | | 7009 |
| | glass | | | | | 7010 |
| | heated glass | | | | | 7084 |
| LH/RH/RH | solid | | | | | std |
| | glass | | | | | 7015 |
| | heated glass | | | | | n/a |

LH = Left Hand, RH = Right Hand Note: Glass doors are standard on selected blood bank, chromatography and pharmacy refrigerators; consult specification chart for details. Sliding glass doors are standard on all 45.8 cu.ft. (1297 L) models. Heated glass doors will increase amperage and may require next size breaker.

Accessories



Temperature recorder

Roll-Out Drawers

Optional stainless steel drawers, offered as an alternative to standard open wire shelving, are adjustable with full extension. Drawers are factory installed and must be specified when ordering cabinet.

| Roll-Out Drawers | | | | | | | |
|------------------------------------|---|------------|------------|------------|-------------|-------------|-------------|
| Nominal Cabinet Volume, Cu.Ft. (L) | 4.9 (133) | 11.5 (326) | 23.3 (659) | 29.2 (826) | 45.8 (1297) | 51.1 (1447) | 78.8 (2231) |
| Drawers, Complete Set | Catalog Number (Number of Drawers) | | | | | | |
| Refrigerator | 7134 (2)* | 7445 (5) | 6699 (6) | 6704 (6) | 6703 (12) | 6700 (12) | 6701 (18) |
| Freezer | 7134 (2)* | 7446 (7)* | 6699 (6) | 6704 (6) | 6703 (12) | 6700 (12) | 6701 (18) |
| Drawers, Additional | Catalog Number | | | | | | |
| Refrigerator | n/a | n/a | 6702 | 6725 | 6726 | 6702 | 6702 |
| Freezer | n/a | n/a | 6702 | 6725 | 6726 | 6702 | 6702 |

Casters

Casters are optional on most models. Casters are factory installed when ordered at time of cabinet order; customer installed if ordered separately. Choose from 2" (50 mm) or 3" (76 mm) casters.

| Casters | | | | | | | |
|--|-----------------------|------------|------------|------------|-------------|-------------|-------------|
| Nominal Cabinet Volume, Cu.Ft. (L) | 4.9 (133) | 11.5 (326) | 23.3 (659) | 29.2 (826) | 45.8 (1297) | 51.1 (1447) | 78.8 (2231) |
| Casters | Catalog Number | | | | | | |
| 2" Casters (50 mm), Set of 4 | 6041 | 6041 | 6041 | 6041 | 6094 | 6041 | 6041 |
| 3" Casters (76 mm), Set of 4 | 6041-1 | 6041-1 | 6041-1 | 6041-1 | 6694-1 | 6041-1 | 6041-1 |
| Locking Casters for -30°C Freezers only | Catalog Number | | | | | | |
| Set includes | | | | | | | |
| 2 non-locking | 6983 | 6983 | 6983 | 6983 | 6983 | 6983 | 6983 |
| 2" (50 mm) casters | | | | | | | |

Drawer Dividers (Blood Bank Refrigerators and Plasma Freezers)



Stainless steel drawer dividers help manage inventory of bags and boxes.

| Drawer Dividers | | | | | | |
|--|-----------------------|------------|------------|------------|-------------|-------------|
| Nominal Cabinet Volume, Cu.Ft. (L) | 4.9 (133) | 11.5 (326) | 23.3 (659) | 29.2 (826) | 51.1 (1447) | 78.8 (2231) |
| Drawer Dividers | Catalog Number | | | | | |
| Stainless steel column divider (number of columns) | 7027 (4) | 7027 (4) | 6206 (4) | 6963 (5) | 6206 (4) | 6206 (4) |

Interior, Exterior and Countertop Finishes

- Optional stainless steel interior and/or exterior surfaces are available and must be specified when ordering
- Optional stainless steel or white finished countertops on undercounter models

| Finishes | | | | | | | |
|------------------------------------|-----------------------|------------|------------|------------|-------------|-------------|-------------|
| Nominal Cabinet Volume, Cu.Ft. (L) | 4.9 (133) | 11.5 (326) | 23.3 (659) | 29.2 (826) | 45.8 (1297) | 51.1 (1447) | 78.8 (2231) |
| Finishes | Catalog Number | | | | | | |
| Stainless Steel Interior | 7116 | 6199 | 6115 | 6709 | 6711 | 6116 | 6117 |
| Stainless Steel Exterior | 7117 | 6201 | 6128 | 6710 | 6712 | 6129 | 6130 |
| White Countertop | 7120 | n/a | n/a | n/a | n/a | n/a | n/a |
| Stainless Steel Countertop | 7127 | n/a | n/a | n/a | n/a | n/a | n/a |

Finished countertop adds 1" (25 mm) to unit height.

Temperature Recorders

Optional 6" (152 mm) chart, 7-day temperature recorders use pressure-sensitive chart paper; one box of 50 charts included. Built-in recorders must be specified when ordering. Recorders are standard on 11.5 cu.ft. (326 L) and larger blood bank refrigerators and plasma freezers.

| Temperature Recorders | | | | | | | |
|---|-----------------------|------------|------------|------------|-------------|-------------|-------------|
| Nominal Cabinet Volume, Cu.Ft. (L) | 4.9 (133) | 11.5 (326) | 23.3 (659) | 29.2 (826) | 45.8 (1297) | 51.1 (1447) | 78.8 (2231) |
| Temperature Recorders | Catalog Number | | | | | | |
| Built-in, Factory Installed | n/a | 6183-7 | | | | | |
| Free-standing Customer Installed | 6383-7 | | | 6383-7 | | | |
| Replacement Chart paper, -40°C to +25°C, box of 50 charts | 6184 | | 6184 | | | | |



LabCooler™ Modules

LabCooler Benchtop cooler helps maintain enzymes and other frozen material at stable temperatures when used at the lab bench. When stored in a freezer, coolers insulate enzymes



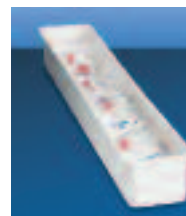
Catalog No. 6744, shown top; Catalog No. 6745, shown above.

and other biologicals from periodic temperature fluctuations due to door openings, defrost cycles or temporary power outages of short duration. Choose from two models.

- The LabCooler II Benchtop Cooler maintains enzymes at stable -20°C for up to two hours. Holds (24) 1.5 ml tubes and (8) 0.5 ml tubes.
- The LabCooler Lite Benchtop Cooler is smaller and more compact, maintains enzyme temperatures at -10°C or below for up to one hour outside the freezer. Holds up to (7) 1.5 ml tubes. Includes a clear interlocking top.

Cooler II
LabCooler Lite

Catalog No. 6744
Catalog No. 6745



Enzyme Storage Bin

Bins are supplied standard on Model UEN-2320 Enzyme Freezer.

Additional bins are useful for storage and inventory management. Formed of high impact ABS plastic, off-white. Labels not included.

Catalog No. 6736

| Interior Dimensions (nominal) | |
|--|--|
| 3.5"W (90 mm) x 3"H (76 mm) x 24"L (610 mm) | |
| Exterior Dimensions (nominal) | |
| 4.4"W (112 mm) x 3.04"H (77 mm) x 25.25"L (641 mm) | |

Accessories



Productive use of our refrigerator or freezer can be enhanced with accessories specially designed to improve utility and convenience. Many accessories are factory installed and must be specified with your original order.

Field installed accessories may require the services of a factory authorized technician.

Some accessories or options may affect refrigerator or freezer performance; for more information contact your Sales Representative.

Alarm Delay Module

The alarm delay eliminates nuisance alarms due to intermittent or transitory conditions such as lightning or brief power outages.



The adjustable delay requires an alarm condition to exist continuously for a pre-determined time (adjustable) before a signal is released to a central alarm/monitoring system or telephone dialer.

- Adjustable delay from 0.5 to 32 minutes
- Red alarm indicator light remains flashing after transient condition is corrected; requires manual reset
- Signals chronic alarm conditions which may indicate impending component failure; allows time for inspection or corrective maintenance
- Inserts variable time interval between detection of alarm condition and transmission of signal
- Includes accurate digital timing circuit adjustable from 0.5, 1, 2, 4, 8, 18, or 32 minutes
- Operates independent of line power; built-in battery and alarm test function uses customer supplied 9V battery

Catalog No. 6903

Digital Temperature Monitor

Simple, accurate and cost-effective, the digital temperature and power monitor provides both alarm/monitoring and digital temperature display in a single, self-contained unit. Standard features include high alarm, alarm mute and chirp, audio delay timer, remote alarm contacts (SPDT), NiCad battery backup, and low voltage AC power supply, 120V, AC.

- The monitor can be installed on or adjacent to any refrigerator or freezer
- Activates an audible and visual warning in case of power failure or overtemperature condition
- Choose from single probe digital models or multiple probe, microprocessor-based models
- Temperature range is -100°C to +25°C
- Probe size 1.25"L x 0.25" diameter (32 mm x 6 mm)



Digital Temperature Monitor Specifications

| | Digital | | | Microprocessor-Based | |
|---------------------------------|---------------------------------------|-----------------|---|----------------------|-------|
| Catalog No. | 6898 | 6899 | 6900 | 6901 | 6902 |
| Input channels | 1 | 1 | 2 | 3 | 4 |
| Temperature range | -100°C to +25°C | | | | |
| Display and setpoint resolution | 1°C | 1°C | 0.1°C | 0.1°C | 0.1°C |
| Temperature alarm | high only | | high and low | | |
| LCD alphanumeric | numeric only | | 8-character, | | |
| display | | | adjustable | | |
| Visual alarm | red only | | green = normal; red = deviation | | |
| Solid-state probe lead wire | 8 foot Teflon® | 8 foot 24 gauge | 20' Teflon, color-coded | | |
| Relay delay | n/a | | programmable, 0 – 30 minutes | | |
| Alarm/battery test switch | n/a | | standard | | |
| Mounting method | Velcro® | | | bracket | |
| Case dimensions | 5"L x 4.5"W x 2"D 27 x 114 x 50 mm | | 6.25"L x 3.25"W x 2"D 158 x 83 x 50 mm | | |

Access Port

Additional port for probes, cables, leads or measuring instruments may be added to any cabinet. Port is 1" (25 mm) diameter for freezers and 2" (50 mm) for refrigerators. Location must be specified when ordering. 2" for Refrigerators and Freezers.

Catalog No. 6038

Solid wood Catalog No. 6099
Wood frame Catalog No. 6924

Specifications

CFC-Free Refrigerants, Insulation and Packaging

All our refrigerators and freezers use CFC-free refrigerants, cabinet insulation and packaging.

Product Selection

This catalog is divided into sections according to general product application. Because most controllers allow adjustable setpoints, all temperatures are listed as design operating temperatures and typically represent the lowest or coldest temperature of a temperature range.

Electrical Information

Thermo Scientific Revco refrigerators and freezers are designed to meet UL, CUL, CE and TUV criteria for safety and performance. All connections must comply with local electrical codes.

- Selection charts for each standard model list voltage, rated amperage, recommended circuit breaker size, and NEMA (National Electrical Manufacturers' Association, USA) electrical plug information
- Most refrigerators and freezers are supplied with line cord plugs (P) which require corresponding receptacles illustrated on the line cord plug reference chart to the right



- Site preparation requires availability of the proper receptacle; a dedicated circuit is recommended
- Special voltage selections may be available at extra cost and must be specified when ordering
- For questions regarding site preparation, installation and electrical connection, contact our sales representative

Certification of Calibration

Control, alarm and temperature recording systems are systematically calibrated at the factory for accurate performance. An optional Certificate of Calibration to an NIST (National Institute of Standards and Technology, formerly National Bureau of Standards) traceable instrument includes a Model Number and Serial Number Certificate (single point calibration). Multiple point calibration is also available. Calibration certificates must be requested when ordering; for details contact our sales representatives.

Validation Testing Program

Validation testing services in advance of shipment can accelerate in-house FDA Installation Qualification (IQ) and Operation Qualification (OQ) programs. Validation services include documentation and performance reports, compressor and sub-system component specifications, microprocessor flow diagrams, software specifications and more. For more details, contact our sales representatives.

Performance Data

For detailed performance information such as temperature recovery, power consumption and other model-specific operational characteristics, contact our sales representatives.

Ordering Information

Our sales representatives will assist in choosing the proper refrigerator or freezer for your application.

- Each model number is voltage specific. For clarity, please include the voltage of your selected refrigerator or freezer when ordering
- When ordering your refrigerator or freezer, please consider current or future accessory requirements such as temperature recorders, extra shelves and alarm/monitoring systems
- Many accessories are factory installed and must be specified when ordering

Line Cord Plug Reference

| Models with this code | have this plug | require this receptacle | NEMA Reference | |
|-----------------------|----------------|-------------------------|----------------|------------|
| | | | Plug | Receptacle |
| P1 | | | 5-15P | 5-15R |
| P2 | | | 5-20P | 5-20R |
| P3 | | | 5-30P | 5-30R |
| P4 | | | 6-15P | 6-15R |
| P5 | | | 6-20P | 6-20R |
| P6 | | | 6-30P | 6-30R |
| P7 | | | European | |

Refrigerators and freezers supplied with line cord plugs (P) require corresponding receptacles illustrated in the Line Cord Plug Reference. Catalog selection charts list each standard model with voltage, rated amperage, recommended circuit breaker size and NEMA electrical plug information.