

Packaging - Processing  
**Bid on Equipment**  
1-847-683-7720  
www.bid-on-equipment.com



**Thermo Scientific Jewett®  
Refrigerators and Freezers**



Safe, secure cold storage solutions  
for critical samples and materials

# Sample Protection with Peace of Mind



▶ *A 60-year tradition  
continues with a  
wide range of  
high-quality products.*



Blood Bank  
Refrigerators

*Pages 2-3*

Plasma  
Freezers

*Pages 4-6*

## Thermo Scientific Jewett Refrigerators and Freezers

– *safe, dependable cold storage for critical samples and materials*

Critical cold storage applications demand a safe, stable environment with no room for fluctuation in temperature. Samples can be fragile and expensive, so you simply can't afford undependable equipment and the challenges a failure could bring.

Our refrigerators and freezers have been designed to provide worry-free operation and the secure, controlled environment your applications and materials require.



Specialty  
Freezers

*Pages 7-9*

General Purpose  
Refrigerators & Freezers

*Pages 10-12*

Surveillance, Monitoring  
& Validation Systems

*Page 13*

# Thermo Scientific Jewett Blood Bank Refrigerators



Our upright blood bank refrigerators feature easy-to-clean stainless steel interiors and multi-pane heated glass doors that eliminate condensation and fogging.

## Blood Bank Refrigerators

— providing superior temperature uniformity

Our blood bank refrigerators provide fast pull-down, rapid temperature recovery and superior +4°C temperature uniformity for refrigerated blood and blood products.

- Models with storage capacities from 35 to 960 (450 mL) blood bags
- Forced-air circulation system for maximum temperature uniformity and rapid recovery times
- Dual-pivot door hinges ensure air-tight door closures
- Cold-saving stainless steel drawers are fully extendable and enhance temperature uniformity
- Positive latch with key lock security prevents door 'pop-open' on two-door units
- Alarm probe cord wrap allows easy access to probe during monthly checks
- Options include adjustable drawer dividers, additional drawers/shelves



## Blood Bank Refrigerators

Temperature Range: +2°C to +4°C; Factory Preset +4°C

Model/ Monitor	Cat. No.	Blood Bag* Capacity	Doors	Volume Liters (cu.ft.)	Interior Dimensions H x W x D, cm (inches)	Exterior Dimensions H x W x D, cm (inches)	Electrical	Amps/ Breaker
<b>BBR6</b>	22650800	35	1	153 (5)	51.8 x 50.2 x 54 (20.37 x 19.75 x 21.25)	87.6 x 61 x 61.3 (34.5 x 24 x 26)	120 V/60 Hz	3.2/15
HemaPro 101	22650805	35	1	153 (5)	51.8 x 50.2 x 54 (20.37 x 19.75 x 21.25)	87.6 x 61 x 61.3 (34.5 x 24 x 26)	220 V/50-60 Hz	1.6/15
<b>BBR11</b>	22650806	180	1	312 (11)	86.4 x 62.9 x 59.7 (34 x 24.75 x 23.5)	142.2 x 73.7 x 80.3 (56 x 29 x 31.62)	120 V/60 Hz	3.5/15
HemaPro 2000	22650807	180	1	312 (11)	86.4 x 62.9 x 59.7 (34 x 24.75 x 23.5)	142.2 x 73.7 x 80.3 (56 x 29 x 31.62)	220 V/50-60 Hz	2.0/15
<b>BBR17</b>	22650808	315	1	479 (16.9)	128.6 x 62.9 x 59.7 (50.62 x 24.75 x 23.5)	187.6 x 73.7 x 76.2 (73.87 x 29 x 30)	120 V/60 Hz	8.8/15
HemaPro 2000	22650809	315	1	479 (16.9)	128.6 x 62.9 x 59.7 (50.62 x 24.75 x 23.5)	187.6 x 73.7 x 76.2 (73.87 x 29 x 30)	220 V/50-60 Hz	4.4/15
<b>BBR25</b>	22650810	480	1	702 (24.8)	151.4 x 62.9 x 74.9 (59.62 x 24.75 x 29.5)	210.5 x 73.7 x 91.4 (82.87 x 29 x 36)	120 V/60 Hz	8.9/15
HemaPro 2000	22650811	480	1	702 (24.8)	151.4 x 62.9 x 74.9 (59.62 x 24.75 x 29.5)	210.5 x 73.7 x 91.4 (82.87 x 29 x 36)	220 V/50-60 Hz	4.5/15
<b>BBR37</b>	22650812	630	2	1059 (37.4)	128.6 x 139.1 x 59.7 (50.62 x 54.75 x 23.5)	187.6 x 149.9 x 76.2 (73.87 x 59 x 30)	120 V/60 Hz	12.2/15
HemaPro 2000	22650813	630	2	1059 (37.4)	128.6 x 139.1 x 59.7 (50.62 x 54.75 x 23.5)	187.6 x 149.9 x 76.2 (73.87 x 59 x 30)	220 V/50-60 Hz	6.1/15
<b>BBR55</b>	22650814	960	2	1556 (55)	151.4 x 139.1 x 74.9 (59.62 x 54.75 x 29.5)	210.5 x 149.9 x 91.4 (82.87 x 59 x 36)	120 V/60 Hz	12.2/15
HemaPro 2000	22650815	960	2	1556 (55)	151.4 x 139.1 x 74.9 (59.62 x 54.75 x 29.5)	210.5 x 149.9 x 91.4 (82.87 x 59 x 36)	220 V/50-60 Hz	6.1/15

\* 450 mL bag.



## Counter-High Blood Bank Refrigerator

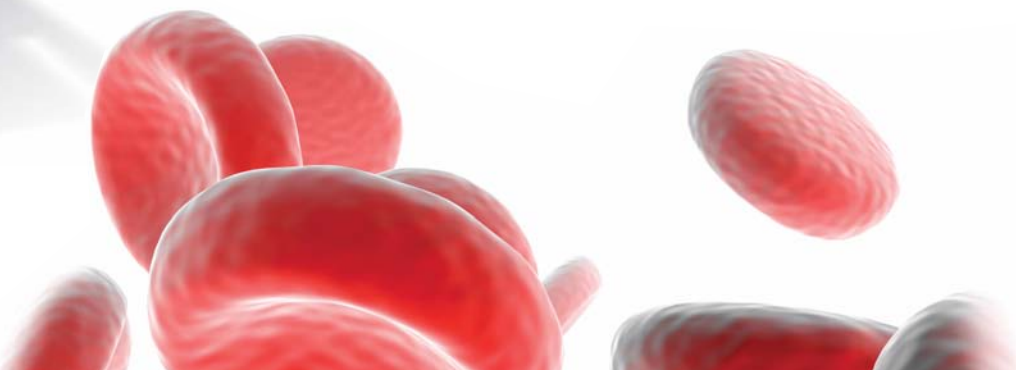
– maximum protection with minimal footprint



Our counter-high blood bank refrigerator provides dependable +4°C storage and premium performance for surgical suites, emergency/recovery rooms and satellite laboratories.

- Accommodates up to 60 (450 mL) blood bags
- Forced-air circulation system and frost-free operation for maximum temperature uniformity and rapid recovery times
- Stand-alone monitor alerts to unsafe conditions
- Easy-to-clean stainless steel interior and exterior
- Removable top for undercounter applications

Our counter-high blood bank refrigerators are equipped with two pullout drawers.



### Counter-High Blood Bank Refrigerator

Temperature Range: +2°C to +4°C; Factory Preset +4°C

Model/ Monitor	Cat. No.	Blood Bag* Capacity	Doors	Volume Liters (cu.ft.)	Interior Dimensions H x W x D, cm (inches)	Exterior Dimensions H x W x D, cm (inches)	Electrical	Amps/ Breaker
CT1	22650820	60	1	153 (5.4)	51.8 x 49.2 x 54.6 (20.37 x 19.37 x 21.5)	91.4 x 61 x 61.3 (36 x 24 x 24.12)	120 V/60 Hz	3.2/15
HemaPro 101	22650821	60	1	153 (5.4)	51.8 x 49.2 x 54.6 (20.37 x 19.37 x 21.5)	91.4 x 61 x 61.3 (36 x 24 x 24.12)	220 V/50-60 Hz	1.6/15

\* 450 mL bag.

# Thermo Scientific Jewett Plasma Freezers



## Upright Plasma Freezers

— assured protection with easy validation

Our plasma freezers offer the convenience of frost-free operation with the security of forced-air temperature uniformity. Every freezer provides safe and efficient blood plasma storage that can be easily verified and validated.

All upright models incorporate a Thermo Scientific HemaPro™ surveillance/monitoring system and a temperature chart recorder for compliance with regulatory standards (for more information, see page 13).



Flexible configurations of drawers and shelves offer greater versatility for secure plasma storage.

Our high-performance -40°C freezers are designed to provide safe and efficient plasma storage that can be easily verified and validated, and meet strict requirements established by the AABB, FDA, ARC and other agencies.

## Undercounter Plasma Freezers

— *safely meeting small storage requirements*

Our -40°C and -30°C undercounter plasma freezers are ideal for small storage needs and for confined spaces.

- Storage for up to 88 (300 mL) plasma packs
- Forced-air circulation system for maximum temperature uniformity and rapid recovery times
- HemaPro monitor alerts to unsafe conditions
- Easy-to-clean stainless steel interiors and exteriors



*Our undercounter plasma freezers have removable tops for casework applications.*

## -30°C and -40°C Plasma Freezers

Our high-performance -40°C plasma freezers provide long-term storage for specialty plasma products, delivering protection against interior warm-up that can result from heavy freezer use. Forced-air cooling ensures fast heat removal and quick temperature recovery times.

Our -30°C plasma freezers maintain safe, uniform storage conditions even at ambient temperatures of up to +30°C.

- -30°C and -40°C units with storage capacities from 48 to 1600 (300 mL) plasma packs
- Frost-free operation with an advanced hot gas or electric defrost system
- Forced-air circulation system for maximum temperature uniformity and rapid recovery times
- 7-day, 24-hour electronic recording thermometer
- Positive latch with key lock security; prevents door 'pop-open' on two-door units
- Anti-sweat door frame heaters with magnetic compression gaskets to provide a tight door seal



# Thermo Scientific Jewett Plasma Freezers

## -30°C Plasma Freezers

Temperature Range: Factory set to -30°C								
Model/Monitor	Cat. No.	Bag* Capacity	Doors/Drawers	Volume Liters (cu.ft.)	Interior Dimensions H x W x D, cm (inches)	Exterior Dimensions H x W x D, cm (inches)	Electrical	Amps/Breaker
<b>BPL306</b>	22650822	48	1/1	153 (5.4)	51.8 x 49.2 x 54.6 (20.37 x 19.37 x 21.5)	87.6 x 61 x 66 (34.5 x 24 x 26)	120 V/60 Hz	8/15
HemaPro 101-3000	22650823	48	1/1	153 (5.4)	51.8 x 49.2 x 54.6 (20.37 x 19.37 x 21.5)	87.6 x 61 x 66 (34.5 x 24 x 26)	220 V/50-60 Hz	4/15
<b>BPL311</b>	22650824	300	1/4	312 (11)	86.4 x 62.9 x 59.7 (34 x 24.75 x 23.5)	142.2 x 73.7 x 80.2 (56 x 29 x 31.56)	120 V/60 Hz	10/15
HemaPro 2000	22650825	300	1/4	312 (11)	86.4 x 62.9 x 59.7 (34 x 24.75 x 23.5)	142.2 x 73.7 x 80.2 (56 x 29 x 31.56)	220 V/50-60 Hz	6/15
<b>BPL317</b>	22650826	525	1/7	479 (16.9)	128.6 x 62.9 x 63.2 (50.62 x 24.75 x 24.87)	187.6 x 73.7 x 76.2 (73.87 x 29 x 30)	220 V/50-60 Hz	8/15
HemaPro 2000								
<b>BPL325</b>	22650827	800	1/8	702 (24.8)	151.4 x 62.9 x 74.9 (59.62 x 24.75 x 29.5)	210.5 x 73.7 x 91.4 (82.87 x 29 x 36)	220 V/50-60 Hz	8/15
HemaPro 2000								
<b>BPL337</b>	22650828	1050	2/14	1060 (37.4)	128.6 x 139.1 x 59.7 (50.62 x 54.75 x 23.5)	187.6 x 149.9 x 76.2 (73.87 x 59 x 30)	220 V/50-60 Hz	5/15
HemaPro 2000								
<b>BPL355</b>	22650829	1600	2/16	1556 (55)	151.4 x 139.1 x 74.9 (59.62 x 54.75 x 29.5)	210.5 x 149.9 x 91.4 (82.87 x 59 x 36)	220 V/50-60 Hz	9.5/15
HemaPro 2000								

\* 300 mL bag.

## -40°C Plasma Freezers

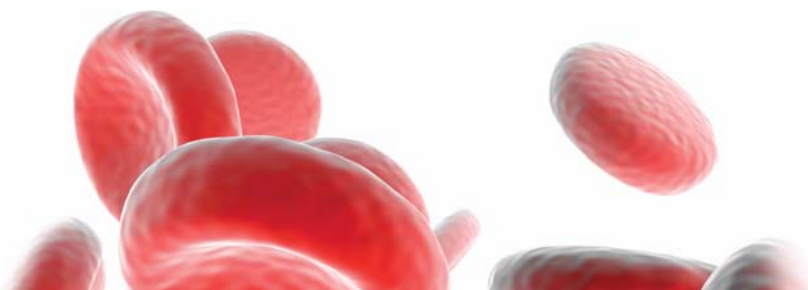
Temperature Range: Factory set to -40°C								
Model/Monitor	Cat. No.	Bag* Capacity	Doors/Drawers	Volume Liters (cu.ft.)	Interior Dimensions H x W x D, cm (inches)	Exterior Dimensions H x W x D, cm (inches)	Electrical	Amps/Breaker
<b>BPL406</b>	22650830	48	1/1	153 (5.4)	51.8 x 49.2 x 54.6 (20.37 x 19.37 x 21.5)	87.6 x 61 x 66 (34.5 x 24 x 26)	120 V/60 Hz	6.7/15
HemaPro 101-3000	22650831	48	1/1	153 (5.4)	51.8 x 49.2 x 54.6 (20.37 x 19.37 x 21.5)	87.6 x 61 x 66 (34.5 x 24 x 26)	220 V/50-60 Hz	3.5/15
<b>BPL411</b>	22650832	300	1/4	312 (11)	86.4 x 62.9 x 59.7 (34 x 24.75 x 23.5)	142.2 x 73.7 x 76.2 (56 x 29 x 31.59)	120 V/60 Hz	10/15
HemaPro 2000	22650833	300	1/4	312 (11)	86.4 x 62.9 x 59.7 (34 x 24.75 x 23.5)	142.2 x 73.7 x 76.2 (56 x 29 x 31.59)	220 V/50-60 Hz	6/15
<b>BPL417</b>	22650834	525	1/7	479 (16.9)	128.6 x 62.9 x 63.2 (50.62 x 24.75 x 24.87)	187.6 x 73.7 x 76.2 (73.87 x 29 x 30)	220 V/50-60 Hz	8/15
HemaPro 2000								
<b>BPL425</b>	22650835	800	1/8	702 (24.8)	151.4 x 62.9 x 74.9 (59.62 x 24.75 x 29.5)	210.5 x 73.7 x 101.3 (82.87 x 29 x 39.87)	220 V/50-60 Hz	8/15
HemaPro 2000								
<b>BPL437</b>	22650836	1050	2/14	1060 (37.4)	128.6 x 139.1 x 59.7 (50.62 x 54.75 x 23.5)	187.6 x 149.9 x 76.2 (73.87 x 59 x 30)	220 V/50-60 Hz	16/15
HemaPro 2000								
<b>BPL455</b>	22650837	1600	2/16	1556 (55)	151.4 x 139.1 x 74.9 (59.62 x 54.75 x 29.5)	210.5 x 149.9 x 101.3 (82.87 x 59 x 39.87)	220 V/50-60 Hz	16/15
HemaPro 2000								

\* 300 mL bag.

## Undercounter -30°C and -40°C Plasma Freezers

Temperature Range: Factory set to -30°C or -40°C								
Model/Monitor	Cat. No.	Bag* Capacity	Doors/Drawers	Volume Liters (cu.ft.)	Interior Dimensions H x W x D, cm (inches)	Exterior Dimensions H x W x D, cm (inches)	Electrical	Amps/Breaker
<b>CTF306</b>	22650838	96	1/2	153 (5.4)	51.8 x 49.2 x 54.6 (20.37 x 19.37 x 21.5)	91.4 x 61 x 61.3 (36 x 24 x 24.12)	120 V/60 Hz	8/15
HemaPro 101-3000	22650839	96	1/2	153 (5.4)	51.8 x 49.2 x 54.6 (20.37 x 19.37 x 21.5)	91.4 x 61 x 61.3 (36 x 24 x 24.12)	220 V/50-60 Hz	4/15
<b>CTF406</b>	22650840	96	1/2	153 (5.4)	51.8 x 49.2 x 54.6 (20.37 x 19.37 x 21.5)	91.4 x 61 x 61.3 (36 x 24 x 24.12)	120 V/60 Hz	6.7/15
HemaPro 101-3000	22650841	96	1/2	153 (5.4)	51.8 x 49.2 x 54.6 (20.37 x 19.37 x 21.5)	91.4 x 61 x 61.3 (36 x 24 x 24.12)	220 V/50-60 Hz	3.5/15

\* 300 mL bag.



# Thermo Scientific Jewett Specialty Refrigerators & Freezers



## Pharmacy and Biological Refrigerators

– *for pharmacy/biological, flammable material and explosion-proof storage*

Our pharmacy and biological refrigerators offer plenty of space for storage of pharmaceutical and biological materials under safe, controlled conditions.

- Capacities from 16.9 to 55.0 cu. ft.
- Uniform cabinet temperatures of +2°C to +4°C with rapid recovery after door openings

- Advanced forced-air cooling with automatic defrost cycle
- High-visibility digital temperature display
- Positive door latches with key lock for added security
- Options include alarm/monitoring system and temperature chart recorder

Our pharmacy and biological refrigerators feature full-view glass doors and illuminated interiors that improve visibility and make inventory checks easier.



## Dual Temperature Refrigerator/Freezer Combinations

– *offering the convenience of two separate cooling compartments*

Our Dual Temperature refrigerator/freezer combinations are fully equipped for more demanding general purpose storage requirements.

- Upright models with operating temperatures of +2°C to +4°C (refrigerator) and -20°C (freezer)
- Rapid temperature recovery after door openings

- Advanced forced-air cooling and automatic/off-cycle defrost
- High-visibility digital temperature display
- Positive door latches with key lock for added security
- Options include alarm/monitoring system and temperature chart recorder

Our Dual Temperature combinations have easy-to-clean stainless steel interiors. Adjustable shelves and drawers enhance storage flexibility.



# Thermo Scientific Jewett Laboratory Freezers



Our freezers are equipped with automatic condensate evaporators. Re-circulating air fans help to maintain cabinet temperature uniformity.

## Laboratory Freezers

– proven performance for demanding storage needs

Our freezers are available with operating temperatures pre-set to -20°C, -30°C or -40°C for a diverse range of cold storage needs. Our freezers provide frost-free performance, and outstanding temperature uniformity and rapid temperature recovery following door openings.

- Upright and undercounter models to suit a variety of space and capacity requirements
- Advanced forced-air cooling with automatic defrost cycle
- Thermostatic expansion valve provides more cooling power under heavy-use conditions
- High-visibility digital temperature display
- Positive door latches with key lock for added security
- Options include alarm/monitoring system, temperature chart recorder, stainless steel interiors/exterior and additional shelves/drawers

# Thermo Scientific Jewett Specialty Refrigerators and Laboratory Freezers

## Pharmacy and Biological Refrigerators

Temperature Range: +2°C to +4°C								
Model/Style	Cat. No.	Glass Doors	Drawers	Volume Liters (cu.ft.)	Interior Dimensions H x W x D, cm (inches)	Exterior Dimensions H x W x D, cm (inches)	Electrical	Amps/Breaker
PR17 Upright	22650883	1	6	479 (16.9)	128.6 x 62.9 x 59.7 (50.62 x 24.75 x 23.5)	187.6 x 73.7 x 76.2 (73.87 x 29 x 30)	120 V/60 Hz	8.8/15
	22650884	1	6	479 (16.9)	128.6 x 62.9 x 59.7 (50.62 x 24.75 x 23.5)	187.6 x 73.7 x 76.2 (73.87 x 29 x 30)	220 V/50-60 Hz	4.4/15
PR25 Upright	22650885	1	7	702 (24.8)	151.4 x 62.9 x 74.9 (59.62 x 24.75 x 29.5)	210.5 x 73.7 x 91.4 (82.87 x 29 x 36)	120 V/60 Hz	8/15
	22650886	1	7	702 (24.8)	151.4 x 62.9 x 74.9 (59.62 x 24.75 x 29.5)	210.5 x 73.7 x 91.4 (82.87 x 29 x 36)	220 V/50-60 Hz	4/15
PR37 Upright	22650889	2	12	1060 (37.4)	128.6 x 139.1 x 59.7 (50.62 x 54.75 x 23.5)	187.6 x 149.9 x 76.2 (73.87 x 59 x 30)	120 V/60 Hz	12.3/15
	22650890	2	12	1060 (37.4)	128.6 x 139.1 x 59.7 (50.62 x 54.75 x 23.5)	187.6 x 149.9 x 76.2 (73.87 x 59 x 30)	220 V/50-60 Hz	6.1/15
PR55 Upright	22650891	2	14	1556 (55)	151.4 x 139.1 x 74.9 (59.62 x 54.75 x 29.5)	210.5 x 149.9 x 91.4 (82.87 x 59 x 36)	120 V/60 Hz	12.3/15
	22650892	2	14	1556 (55)	151.4 x 139.1 x 74.9 (59.62 x 54.75 x 29.5)	210.5 x 149.9 x 91.4 (82.87 x 59 x 36)	220 V/50-60 Hz	6.1/15

## Dual Temperature Refrigerator/Freezer Combinations

Temperature Range: +2°C to +4°C (Refrigerator); -20°C (Freezer)								
Model/Style	Cat. No.	Solid Doors	Shelves/Drawers	Volume Liters (cu.ft.)	Interior Dimensions H x W x D, cm (inches)	Exterior Dimensions H x W x D, cm (inches)	Electrical	Amps/Breaker
PRF17 Upright	22650895	2	4/1	113 (4.7) Frz/311.4 (11) Ref	128.6 x 62.9 x 61 (50.62 x 24.75 x 24)	187.6 x 73.7 x 76.2 (73.87 x 29 x 30)	120 V/60 Hz	12.1/15
	22650896	2	4/1	113 (4.7) Frz/311.4 (11) Ref	128.6 x 62.9 x 61 (50.62 x 24.75 x 24)	187.6 x 73.7 x 76.2 (73.87 x 29 x 30)	220V/60 Hz	12.1/15
LRF37 Upright	22650842	2	4/7	485 (17) Frz/485 (17) Ref	128.6 x 139.1 x 61 (50.62 x 54.75 x 24)	187.6 x 149.9 x 76.2 (73.87 x 59 x 30)	120 V/60 Hz	12.1/15
	22650843	2	4/7	485 (17) Frz/485 (17) Ref	128.6 x 139.1 x 61 (50.62 x 54.75 x 24)	187.6 x 149.9 x 76.2 (73.87 x 59 x 30)	220V/60 Hz	12.1/15

## Laboratory Freezers

Temperature Range: -20°C to -40°C								
Model/Style	Cat. No.	Doors/Shelves	Volume Liters (cu.ft.)	Factory Set °C	Interior Dimensions H x W x D, cm (inches)	Exterior Dimensions H x W x D, cm (inches)	Electrical	Amps/Breaker
UCF206 Undercounter	22650877	1/2	143 (5)	-20	51.8 x 49.2 x 54.6 (20.37 x 19.37 x 21.5)	87.6 x 61 x 61.3 (34.5 x 24 x 24.12)	120 V/60 Hz	10/15
	22650878	1/2	143 (5)	-20	51.8 x 49.2 x 54.6 (20.37 x 19.37 x 21.5)	87.6 x 61 x 61.3 (34.5 x 24 x 24.12)	220 V/50-60 Hz	5/15
UCF306 Undercounter	22650879	1/2	143 (5)	-30	51.8 x 49.2 x 54.6 (20.37 x 19.37 x 21.5)	87.6 x 61 x 61.3 (34.5 x 24 x 24.12)	120 V/60 Hz	8/15
	22650890	1/2	143 (5)	-30	51.8 x 49.2 x 54.6 (20.37 x 19.37 x 21.5)	87.6 x 61 x 61.3 (34.5 x 24 x 24.12)	220 V/60 Hz	8/15
UCF406 Undercounter	22650881	1/2	143 (5)	-40	51.8 x 49.2 x 54.6 (20.37 x 19.37 x 21.5)	87.6 x 61 x 61.3 (34.5 x 24 x 24.12)	120 V/60 Hz	6.7/15
	22650882	1/2	143 (5)	-40	51.8 x 49.2 x 54.6 (20.37 x 19.37 x 21.5)	87.6 x 61 x 61.3 (34.5 x 24 x 24.12)	220 V/60 Hz	6.7/15
LF17 Series Upright	22650866	1/4	479 (16.9)	-20	128.6 x 62.9 x 63.2 (50.62 x 24.75 x 24.87)	187.6 x 73.7 x 76.2 (73.87 x 29 x 30)	120 V/60 Hz	10/15
	22650867	1/4	479 (16.9)	-20	128.6 x 62.9 x 63.2 (50.62 x 24.75 x 24.87)	187.6 x 73.7 x 76.2 (73.87 x 29 x 30)	220 V/50-60 Hz	6/15
	22650871	1/4	479 (16.9)	-30	128.6 x 62.9 x 63.2 (50.62 x 24.75 x 24.87)	187.6 x 73.7 x 76.2 (73.87 x 29 x 30)	220 V/50-60 Hz	6/15
	22650873	1/4	479 (16.9)	-40	128.6 x 62.9 x 63.2 (50.62 x 24.75 x 24.87)	187.6 x 73.7 x 76.2 (73.87 x 29 x 30)	220 V/50-60 Hz	8/15
LF25 Series Upright	22650868	1/5	702 (24.8)	-20	151.4 x 62.9 x 74.9 (59.62 x 24.75 x 29.5)	210.5 x 73.7 x 101.3 (82.87 x 29 x 39.8)	120 V/60 Hz	10/15
	22650869	1/5	702 (24.8)	-20	151.4 x 62.9 x 74.9 (59.62 x 24.75 x 29.5)	210.5 x 73.7 x 101.3 (82.87 x 29 x 39.8)	220 V/50-60 Hz	8/15
	22650803	1/5	702 (24.8)	-30	151.4 x 62.9 x 74.9 (59.62 x 24.75 x 29.5)	210.5 x 73.7 x 101.3 (82.87 x 29 x 39.8)	220 V/50-60 Hz	8/15
	22650874	1/5	702 (24.8)	-40	151.4 x 62.9 x 74.9 (59.62 x 24.75 x 29.5)	210.5 x 73.7 x 101.3 (82.87 x 29 x 39.8)	220 V/50-60 Hz	8/15
LF37 Series Upright	22650870	2/8	1060 (37.4)	-20	128.6 x 139.1 x 59.7 (50.62 x 54.75 x 23.5)	187.6 x 149.9 x 76.2 (73.87 x 59 x 30)	220 V/50-60 Hz	5/15
	22650872	2/8	1060 (37.4)	-30	128.6 x 139.1 x 59.7 (50.62 x 54.75 x 23.5)	187.6 x 149.9 x 76.2 (73.87 x 59 x 30)	220 V/50-60 Hz	5/15
	22650875	2/8	1060 (37.4)	-40	128.6 x 139.1 x 59.7 (50.62 x 54.75 x 23.5)	187.6 x 149.9 x 76.2 (73.87 x 59 x 30)	220 V/50-60 Hz	16/15
LF55 Series Upright	22650802	2/10	1558 (55)	-20	151.4 x 139.1 x 74.9 (50.62 x 54.75 x 29.5)	210.5 x 149.9 x 101.3 (82.87 x 59 x 39.8)	220 V/50-60 Hz	8/15
	22650807	2/10	1558 (55)	-30	151.4 x 139.1 x 74.9 (50.62 x 54.75 x 29.5)	210.5 x 149.9 x 101.3 (82.87 x 59 x 39.8)	220 V/50-60 Hz	8/15
	22650876	2/10	1558 (55)	-40	151.4 x 139.1 x 74.9 (50.62 x 54.75 x 29.5)	210.5 x 149.9 x 101.3 (82.87 x 59 x 39.8)	220 V/50-60 Hz	16/15

Freezers are available in factory settings of -20°C, -30°C and -40°C, all frost free. Please indicate desired temperature when ordering.

# Thermo Scientific Jewett General Purpose Refrigerators & Freezers



Most of our lab-grade refrigerators feature illuminated interiors for better visibility. Multi-pane heated glass doors and frames eliminate condensation.

## General Purpose Refrigerators

– for life science, clinical and industrial applications

Our lab-grade refrigerators are fully featured for storage of critical materials that demand constant temperature and security.

- Upright and undercounter models with capacities from 5.4 to 55.0 cu. ft.
- Uniform cabinet temperatures of +2°C to +4°C with rapid recovery after door openings
- Advanced forced-air cooling with automatic defrost cycle
- High-visibility digital temperature display
- Positive door latches with key lock for added security
- Options include alarm/monitoring system, temperature chart recorder and pass-thru configuration on specific models

## General Purpose Refrigerators & Freezers

– for non-critical life science, clinical and industrial applications

Our refrigerators and freezers provide all that's required for cost-effective, reliable storage for non-critical storage needs. The refrigeration systems are equipped with reliable hermetically sealed compressors for quiet operation.



Our refrigerators incorporate a reliable refrigeration system and feature high-density, CFC-free, foamed-in-place urethane insulation.

### Refrigerators

- Operating temperatures from +2°C to +10°C

### Freezers

- Operating temperatures from -12°C to -18°C

### Combinations

- Operating temperatures from +2°C to +10°C (refrigerator) and -12°C to -18°C (freezer)
- Model R250 has an automatic defrost system
- Model R250 offers operating temperatures from +1°C to +7°C (refrigerator) and -14°C to -21°C (freezer)

# Thermo Scientific Jewett General Purpose Refrigerators & Freezers

## General Purpose Laboratory Refrigerators

Temperature Range: +2°C to +4°C; Factory set to +4°C

Model/Style	Cat. No.	Glass* Doors	Shelves	Volume Liters (cu.ft.)	Interior Dimensions H x W x D, cm (inches)	Exterior Dimensions H x W x D, cm (inches)	Electrical	Amps/ Breaker
LR6/Compact	22650844	1	1	153 (5.4)	51.8 x 49.2 x 54.6 (20.37 x 19.37 x 21.5)	87.6 x 61 x 61.3 (34.5 x 24 x 24.12)	120 V/60 Hz	3.2/15
	22650845	1	1	153 (5.4)	51.8 x 49.2 x 54.6 (20.37 x 19.37 x 21.5)	87.6 x 61 x 61.3 (34.5 x 24 x 24.12)	220 V/50-60 Hz	1.6/15
LR11/Compact	22650848	1	2	312 (11)	86.4 x 62.9 x 59.7 (34 x 24.75 x 23.5)	142.2 x 73.7 x 78.7 (56 x 29 x 31)	120 V/60 Hz	3.5/15
	22650849	1	2	312 (11)	86.4 x 62.9 x 59.7 (34 x 24.75 x 23.5)	142.2 x 73.7 x 78.7 (56 x 29 x 31)	220 V/50-60 Hz	2/15
LR17/Upright	22650850	1	4	479 (16.9)	128.6 x 62.9 x 59.7 (34 x 24.75 x 23.5)	187.6 x 73.7 x 76.2 (73.87 x 29 x 30)	120 V/60 Hz	8.8/15
	22650851	1	4	479 (16.9)	128.6 x 62.9 x 59.7 (34 x 24.75 x 23.5)	187.6 x 73.7 x 76.2 (73.87 x 29 x 30)	220 V/50-60 Hz	4.4/15
LR25/Upright	22650852	1	5	702 (24.8)	151.4 x 62.9 x 74.9 (59.62 x 24.75 x 29.5)	210.5 x 73.7 x 91.4 (82.87 x 29 x 36)	120 V/60 Hz	8/15
	22650853	1	5	702 (24.8)	151.4 x 62.9 x 74.9 (59.62 x 24.75 x 29.5)	210.5 x 73.7 x 91.4 (82.87 x 29 x 36)	220 V/50-60 Hz	4/15
LR37/Upright	22650856	2	8	1060 (37.4)	128.6 x 139.1 x 59.7 (50.62 x 54.75 x 23.5)	187.6 x 149.9 x 76.2 (73.87 x 59 x 30)	120 V/60 Hz	12.3/15
	22650857	2	8	1060 (37.4)	128.6 x 139.1 x 59.7 (50.62 x 54.75 x 23.5)	187.6 x 149.9 x 76.2 (73.87 x 59 x 30)	220 V/50-60 Hz	6.1/15
LR55/Upright	22650858	2	10	1556 (55)	151.4 x 139.1 x 74.9 (59.62 x 54.75 x 29.5)	210.5 x 149.9 x 91.4 (82.87 x 59 x 36)	120 V/60 Hz	12.3/15
	22650859	2	10	1556 (55)	151.4 x 139.1 x 74.9 (59.62 x 54.75 x 29.5)	210.5 x 149.9 x 91.4 (82.87 x 59 x 36)	220 V/50-60 Hz	6.1/15
UC5B/Undercounter	22650862	1	2	153 (5.4)	51.8 x 49.2 x 54.6 (20.37 x 19.37 x 21.5)	87.6 x 61 x 61.3 (34.5 x 24 x 24.12)	120 V/60 Hz	3.2/15
	22650863	1	2	153 (5.4)	51.8 x 49.2 x 54.6 (20.37 x 19.37 x 21.5)	87.6 x 61 x 61.3 (34.5 x 24 x 24.12)	220 V/50-60 Hz	1.6/15

\* Solid door on UC5B

## General Purpose Refrigerators

Temperature Range: +2°C to +10°C; Factory set to +4°C

Model/Style	Cat. No.	Glass* Doors	Shelves	Volume Liters (cu.ft.)	Interior Dimensions H x W x D, cm (inches)	Exterior Dimensions H x W x D, cm (inches)	Electrical	Amps/ Breaker
JMT45R/Upright	22650904	2 sliding	8	1218 (43)	144.8 x 124.5 x 67.3 (57 x 49 x 26.5)	193 x 134.6 x 81.3 (76 x 53 x 32)	120 V/60 Hz	9.2/20
JMT66/Upright	22650905	3 sliding	12	1870 (66)	139.7 x 180.3 x 64.8 (55 x 71 x 25.5)	198.1 x 190.5 x 76.2 (78 x 75 x 30)	120 V/60 Hz	12/20
JRG70/Upright	22650906	3 hinged	12	1960 (69.2)	148.6 x 188 x 71.1 (58.5 x 74 x 28)	201.3 x 198.1 x 81.3 (79.3 x 78 x 32)	120 V/60 Hz	12/20
C65R/Undercounter	22650898	1	3	184 (6.5)	68.6 x 52.1 x 45.8 (27 x 20.5 x 18)	86.7 x 61 x 60.5 (34.1 x 24 x 23.8)	120 V/60 Hz	2.5/15

\* Solid door on C65R.

## General Purpose Freezers

Temperature Range: -12°C to -20°C; Factory set to -20°C

Model/Style	Cat. No.	Doors	Shelves	Volume Liters (cu.ft.)	Interior Dimensions H x W x D, cm (inches)	Exterior Dimensions H x W x D, cm (inches)	Electrical	Amps/ Breaker
C4F	22650897	1	2/3	141 (5)	74.0 x 48.0 x 50.0 (29.0 x 18.8 x 19.5)	85.0 x 54.0 x 67.0 (33.5 x 21.3 x 26.5)	120 V/60 Hz	1.4/15
C65F/Undercounter	22650899	1	3	184 (6.5)	68.6 x 52.1 x 45.8 (27 x 20.5 x 18)	86.7 x 61 x 60.5 (34.1 x 24 x 23.8)	120 V/60 Hz	2.5/15
R16F/Upright	22650903	1	3	490 (17.3)	130.8 x 68.6 x 54.6 (51.5 x 27 x 21.5)	165.6 x 81.3 x 71.1 (65.2 x 32 x 28)	120 V/60 Hz	1.8/15

## General Purpose Refrigerator/Freezer Combinations

Temperature Range: -20°C to -40°C

Model/Style	Cat. No.	Doors	Shelves	Volume Liters (cu.ft.)	Interior Dimensions H x W x D, cm (inches)	Exterior Dimensions H x W x D, cm (inches)	Electrical	Amps/ Breaker
C65RF* Undercounter	22650901	1	3	42 (1.5)	35.9 x 21 x 33.7 (14.1 x 8.3 x 13.3) Frz	86.7 x 61 x 59.7 (34.1 x 24 x 23.5)	120 V/60 Hz	2.5/15
				119 (4.2)	68.6 x 52.1 x 47 (27 x 20.5 x 18.5) Ref			
R198 Upright	22650902	2	1 Frz	152 (5.4)	43.8 x 64.1 x 55.2 (17.3 x 25.3 x 21.8) Frz	170.8 x 75.3 x 78.4 (67.3 x 29.6 x 30.9)	120 V/60 Hz	7.2/15
			2 Ref	370 (13.1)	99.1 x 66 x 61 (39 x 26 x 24) Ref			
R250 Upright	22650917	2	1 Frz	201 (7.1) Frz	47.6 x 78.7 x 52.1 (18.75 x 31 x 20.5) Frz	174.2 x 91.4 x 85.4 (68.6 x 36 x 33.6)	120 V/60 Hz	5.7/15
			4 Ref	496 (17.5) Ref	96 x 81.3 x 62.2 (37.8 x 32 x 24.5) Ref			

\* Features automatic timed hot gas defrost.

# Thermo Scientific Jewett Specialty Refrigerators & Freezers

## Flammable Material Storage & Explosion-Proof Refrigerators & Freezers

Our flammable material storage and explosive-proof refrigerators and freezers are designed to ensure maximum safety for storage of flammable and volatile materials.

To ensure safety in your workplace, our flammable material storage and explosive-proof refrigerators and freezers are designed to comply with OSHA and National Fire Protection

Association safety requirements. Our explosion-proof refrigerators and freezers also meet NFPA standards, as well as provide reliable performance for Class 1, Group C and D hazardous applications.

- Capacities from 5.0 to 20.7 cu. ft.
- Operating temperatures of +4 to +10 or -12°C to -20°C
- Easy-to-clean, safe, spark-proof interiors
- Steel-encased electrical components eliminate ignition sources inside and outside the cabinet (spark-proof exterior on explosion proof models only)
- Non-sparking magnetic gaskets provide a positive door seal
- Manual defrost built-in drain



UL listed Jewett flammable material/explosion-proof refrigerators and freezers are designed to comply with OSHA and National Fire Protection Association safety requirements for assured safety in the workplace.

### Flammable Material Storage Refrigerators

Temperature Range: +2°C to +10°C; Factory set to +4°C

Model	Catalog No.	Shelves (Interior/Door)	Volume Liters (cu.ft.)	Interior Dimensions H x W x D, cm (inches)	Exterior Dimensions H x W x D, cm (inches)	Electrical	Amps/Breaker
JFM16R	22650907	3/5	411 (14.5)	130.8 x 68.6 x 45.7 (51.5 x 27 x 18)	165.6 x 81.3 x 76.2 (65.2 x 32 x 30)	120 V/60 Hz	5/15
JFM21R	22650908	4/6	586 (20.7)	144.8 x 68.6 x 59.7 (57 x 27 x 23.5)	178.3 x 81.3 x 81.8 (70.2 x 32 x 32.2)	120 V/60 Hz	5/15

### Explosion-Proof Refrigerators

Temperature Range: +2°C to +10°C; Factory set to +4°C

Model	Catalog No.	Shelves (Interior/Door)	Volume Liters (cu.ft.)	Interior Dimensions H x W x D, cm (inches)	Exterior Dimensions H x W x D, cm (inches)	Electrical	Amps/Breaker
JXP16R	22650912	3/5	411 (14.5)	130.8 x 68.6 x 45.7 (51.5 x 27 x 18)	165.6 x 81.3 x 83.1 (65.2 x 32 x 32.7)	120 V/60 Hz	5/15
JXP21R	22650913	4/6	586 (20.7)	144.8 x 68.6 x 59.7 (57 x 27 x 23.5)	178.3 x 81.3 x 88.4 (70.2 x 32 x 34.8)	120 V/60 Hz	5/15

### Flammable Material Storage Freezers

Temperature Range: -12°C to -20°C; Factory set to -20°C

Model	Catalog No.	Shelves (Interior/Door)	Volume Liters (cu.ft.)	Interior Dimensions H x W x D, cm (inches)	Exterior Dimensions H x W x D, cm (inches)	Electrical	Amps/Breaker
CF4F	22650909	2/3	141 (5)	74.0 x 48.0 x 50.0 (29.0 x 18.8 x 19.5)	85.0 x 54.0 x 67.0 (33.5 x 21.3 x 26.5)	120 V/60 Hz	1.4/15
JFM16F	22650910	3/5	490 (17.3)	130.8 x 68.6 x 54.6 (51.5 x 27 x 21.5)	165.6 x 81.3 x 76.2 (65.2 x 32 x 30)	120 V/60 Hz	1.8/15
JFM21F	22650911	4/6	586 (20.7)	144.8 x 68.6 x 59.7 (57 x 27 x 23.5)	178.3 x 81.3 x 81.9 (70.2 x 32 x 32.2)	120 V/60 Hz	1.8/15

### Explosion-Proof Freezers

Temperature Range: -12°C to -20°C; Factory set to -20°C

Model	Catalog No.	Shelves (Interior/Door)	Volume Liters (cu.ft.)	Interior Dimensions H x W x D, cm (inches)	Exterior Dimensions H x W x D, cm (inches)	Electrical	Amps/Breaker
CX4F	22650914	2/3	141 (5)	74.0 x 48.0 x 50.0 (29.0 x 18.8 x 19.5)	85.0 x 54.0 x 73.0 (33.5 x 21.3 x 28.8)	120 V/60 Hz	1.4/15
JXP16F	22650915	3/5	490 (17.3)	130.8 x 68.6 x 54.6 (51.5 x 27 x 21.5)	165.6 x 81.3 x 83.2 (65.2 x 32 x 32.8)	120 V/60 Hz	1.8/15
JXP21F	22650914	4/6	586 (20.7)	144.8 x 68.6 x 59.7 (57 x 27 x 23.5)	178.3 x 81.3 x 88.4 (70.2 x 32 x 34.8)	120 V/60 Hz	1.8/15

# Thermo Scientific Surveillance, Monitoring & Validation Systems

## Surveillance, Monitoring & Validation Systems

— *maintaining your blood supplies under safe conditions*

Our upright blood bank refrigerators and plasma freezers are equipped with sophisticated surveillance and monitoring systems to ensure that your blood products are always stored safely.

Our HemaPro systems provide state-of-the-art alarm and monitoring functionality, and a temperature chart recorder is fitted as standard to meet validation requirements. Optional remote monitors provide the reassurance of independent alerts to unsafe conditions.



### HemaPro 2000™ Surveillance Center

- High visibility display of upper and lower temperatures
- User-adjustable high/low temperature alarms
- Door ajar and condenser efficiency alarms
- Battery back-up maintains alarm functions in the event of power loss
- Event log automatically records time, date and duration of alarm conditions
- Peltier-powered alarm probe for true temperature alarm simulation
- RS232 serial port for data download to PC and remote alarm connections



### HemaPro 101 Monitor

- Bright, easy-to-read digital temperature display
- Power and temperature monitoring functions
- Audible/visual alerts to unsafe conditions
- Temperature calibration test
- Battery back-up and remote alarm connections

### DTPMR Remote Monitor Option

- Provides independent audible/visual alerts to warm, cold or power loss conditions
- Battery back-up for full function during power failure

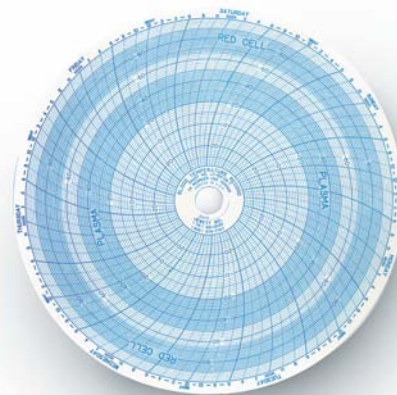
### DTPMRM Multi-Station Remote Monitor Option

- Monitors up to 12 upright blood bank refrigerators/plasma freezers simultaneously
- Audible/visual alerts to unsafe conditions for each unit connected



### 7ER Temperature Chart Recorder

- 7-day temperature recording on easy-to-read circular charts
- Battery back-up for continuous recording during power loss
- Available as an easy-view wall-mounted unit



*Easy-to-read charts with Temp-Hi-Lite™ recording track area.*

## Comprehensive warranties – for total peace of mind

Our blood bank refrigerators and plasma freezers are backed by the Thermo Scientific Jewett 7-2-1 Warranty. You benefit from seven years of compressor coverage, two years replacement parts coverage and one year of free labor on our Jewett blood bank equipment purchased in the United States and Canada.

All other cold storage products (except some general purpose models) are covered by the Thermo Scientific Jewett 5-2-1 Warranty, which provides five-year compressor coverage, two-year replacement parts coverage and one year of free labor.

- Our cold storage products are available to meet many electrical requirements. Please specify voltage when ordering.
- Published interior volumes are nominal, and usable capacities may be offset by shelves, loading preferences and storage methods.
- All specifications are subject to change without notice.



Fisher HealthCare Customer Service:  
1-800-640-0640  
1-800-290-0290 Fax