

Packaging - Processing

Bid on Equipment

1-847-683-7720

www.bid-on-equipment.com

Thermo Scientific FOCUS GC

Full-sized GC performance

Specifically targeted for routine quality control and high productivity laboratories, the Thermo Scientific FOCUS™ GC is a single channel gas chromatograph, compact in size and available with either FID or TCD. Conceived and built around the “core” of the TRACE GC Ultra's hardware and unique features. The FOCUS GC incorporates also new, best of breed electronics. The FOCUS GC is the reference for precision and accuracy of results, as well as a standard for ruggedness for QA/QC and high throughput environments.

Product Specifications



AI/AS 3000 II Autosampler

Combined with the 8-sample AI 3000 II Autoinjector or the 105-sample AS 3000 II Autosampler, the FOCUS GC is positioned in line with your laboratory's throughput requirements at any moment in time, thus preserving scalability.

TriPlus™ Autosampler

For any additional productivity requirement, the TriPlus Autosampler is the unique solution, able to simultaneously automate 2 adjacent FOCUS GCs with up to 300 samples, thus preserving scalability. Choose the degree of automation you need.



Compact Size

Small footprint for bench space optimization: 430 x 510 x 350 mm (HxDxW)

Optimized User Interface

Allows simple control of the main functions of the GC still preventing access to the more critical parameters of the method from unauthorized personnel. In line with the requirements of QA/QC environments.

Automatic Column Characterization

Automatic measurement of the effective column's resistance for exceptional column-to-column and instrument-to-instrument retention time reproducibility at no additional cost.

Wide Oven

Wide oven with front opening allows easy accessibility for straightforward installation of capillary columns mounted on standard diameter cages. Oven dimensions are 225 x 225 x 140 mm (HxWxD)

Additional Instrument Control

Instrument start-up and real time diagnosis, on-line help describing each parameter, logbook with deviation records, and local keyboard lock provide complete and safe system handling.

Leak Check

Automatic leak check function for rapid routine system control.

FOCUS GC

Features and Technical Specifications

Specifications

Power Supply

110 V and 230 V power supply

Base Unit

Height 430 mm, Depth 510 mm, and Width 350 mm

Weight: 30 kg

Column Oven

Compatible with standard capillary column cages

Temperature range: from few degrees above ambient to 350 °C

Program rates: 0.1 to 120 °C/min

Ramps: 7

Plateaus: 8

Typical cool-down time: 350 °C to 50 °C in 270 seconds

Typical heat-up time: 50 °C to 350 °C in 270 seconds

Injectors

Split-Splitless Temperature range: 50 °C to 375 °C

Purged-Packed Temperature range: 50 °C to 400 °C. Suitable for both wide bore and packed columns

Digital Pressure/Flow Controller (1000 kPa)

High pressure pneumatic module

Ambient temperature compensation: Yes

Ambient pressure compensation: Yes

Gas saver: Yes

Automatic column characterization: Yes

Automatic leak check: Yes

Pressure surge: Yes

Base Body with Gas Control for FID

Includes a complete base body with all relevant pneumatic controls for three gas lines

The temperature of the base body is finely controlled in the range of 50 °C to 375 °C in 1 °C increments

The pneumatic module includes three pressure controllers, calibrated restrictors, and on/off valves for H₂, Air, and make-up gases

Detectors

MDA

Linearity

Selectivity or additional features

Flame Ionization Detector

2 x 10⁻¹² gC/sec

Better than 10⁷

Flameout detection and timed programming capability. Acquisition rate: 300 Hz

Thermal Conductivity Detector

600 pg Ethane/mL He

10⁶

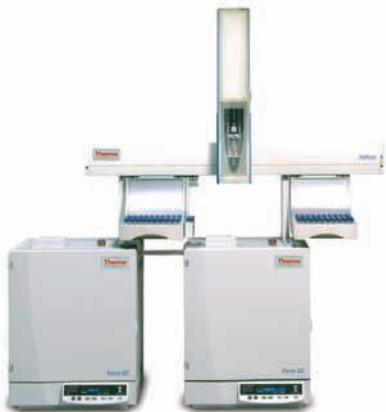
Automated software switch function

Gas Sampling Valve

6-port sampling/switching valve available as an optional accessory for petrochemical and industrial applications. Equipped with selectable sampling loops.

Autosamplers

FOCUS GC is compatible with AI 3000 Autoinjector, AS 3000 Autosampler, and TriPlus™ Autosampler



©2007 Thermo Fisher Scientific Inc. All rights reserved. All trademarks are the property of Thermo Fisher Scientific Inc. and its subsidiaries. Specifications, terms and pricing are subject to change. Not all products are available in all countries. Please consult your local sales representative for details.

ISO 9001 Thermo Electron Italia S.p.A
 is ISO Certified.
 DNV-CERT-00203-94-AO

PS10056_E 06/08C

Africa +43 1 333 5034 127
Australia +61 2 8844 9500
Austria +43 1 333 50340
Belgium +32 2 482 30 30
Canada +1 800 530 8447
China +86 10 8419 3588

Denmark +45 70 23 62 60
Europe-Other +43 1 333 5034 127
France +33 1 60 92 48 00
Germany +49 6103 408 1014
India +91 22 6742 9434
Italy +39 02 950 591

Japan +81 45 453 9100
Latin America +1 608 276 5659
Middle East +43 1 333 5034 127
Netherlands +31 76 579 55 55
South Africa +27 11 570 1840
Spain +34 914 845 965

Sweden/Norway/Finland
 +46 8 556 468 00
Switzerland +41 61 48784 00
UK +44 1442 233555
USA +1 800 532 4752
www.thermo.com

Thermo
 SCIENTIFIC