

**Thermo Scientific
ARL 9900 IntelliPower™ Series
ARL 9900 X-ray WorkStation™**



*Unique X-ray fluorescence spectrometers with
integrated XRD capability*



Cement



Aluminum



Copper



Iron & Steel



Mining

Packaging - Processing

Bid on Equipment

1-847-683-7720

www.bid-on-equipment.com

ARL 9900 IntelliPower Series X-ray Spectrometers

A complete laboratory in one instrument

The Thermo Scientific ARL 9900 IntelliPower Series of X-ray spectrometers is the most capable and most versatile ever offered for process control.

The key to its versatility is the patented technology which allows two X-ray techniques – X-ray fluorescence (XRF) and X-ray diffraction (XRD) – to be combined in one instrument. This makes the ARL 9900 highly productive as it can take the place of two separate instruments. It permits the rapid and very precise and accurate analysis of solid samples of various kinds. And it enables the ARL 9900 to detect the presence of up to 83 elements (from B to U, 5 to 92 in the Mendeleev table) in concentrations ranging from parts per million to 100 %. Advanced integrated software bestows fast commissioning of new methods and permits quick reporting and storing of the analytical results where it matters most.

Modular construction and a range of options allow the ARL 9900 IntelliPower Series to be specified to suit any particular process control application. Installation requirements are straightforward and can be easily accommodated in most industrial environments.

A high degree of automation and digital control make the ARL 9900 easy to use. Specified with the appropriate automatic sample introduction equipment, it can even be programmed to conduct continuous process monitoring in unattended mode with direct connection to automatic sample preparation machines.

And it naturally comes with the world-wide after-sales support of Thermo Scientific.

The ARL 9900 IntelliPower Series in summary

Every analytical requirement met

- Choice of generator power according to your application demands: 1200 W, 2500 W, 3600 W or 4200 W
- The IntelliPower technology allows to operate at 1200 W and 2500 W without requirement of external water cooling
- Versatility, convenience and productivity brought by the combination of two X-ray technologies in one instrument.
- Depending on configuration, capable of detecting and analyzing up to 83 elements from ppm levels to 100 %.
- Modular construction allowing the instrument to be specified to suit the particular requirements of the application
- Unique WDXRF sequential and fixed channel capabilities including quantitative XRD analysis cover any analytical needs
- Fast, simple and highly reliable sample introduction system
- Easily upgraded to handle evolving analytical requirements
- Can be linked to automatic sample preparation machines for on-line process control.
- Successor instruments to the proven and highly successful ARL 9800 range

ARL 9900 IntelliPower applications

A wide range

The ARL 9900 range is designed to meet the requirements of industries where fast process monitoring is critical to quality control. Among them, those producing or processing:

- Metals: iron, steel, aluminum, copper, and their alloys, titanium, magnesium, slags, sinters
- Mining: ores, minerals, limestone, beach sands
- Cement
- By-products
- Refractories and others

ARL 9900 IntelliPower versatility

High performance in every application

The ARL 9900 is capable of detecting a large number of elements. Its modular design allows to closely tailoring the instrument to the intended use. It is possible to configure the instrument with:

- Up to 32 fixed monochromators for fast analysis
- Up to three goniometers programmed to analyze specific elements (quantitative and standard-less analysis) or to scan the X-ray spectrum to detect elements present in a given sample (qualitative and semi-quantitative analysis)
- The compact integrated X-ray diffraction system for phase analysis in process control
- NeXRD, a full X-ray diffraction facility for phase analysis in R&D or process control integrated in the ARL 9900 X-ray WorkStation



ARL 9900 IntelliPower technical features

X-ray system

Designed for effectiveness and reliability

- Power level can be chosen from 1200 W to 4200 W. The higher powers are suited to applications requiring superior sensitivity and throughput
- Optical system optimized to give very precise measurement, high sensitivity and stable analysis
- X-ray tube mounted above the sample preventing damage to the tube and instrument with defective samples such as fragile pellets
- Maximum reliability and durability in service is assured by such careful and robust design
- Close proximity of X-ray tube to the sample brings increased sensitivity and lower limits of detection for all elements
- A Rh anode produces effective excitation of the whole spectrum without interfering with the most common elements
- Thin window (75 microns) standard, extra-thin window (50 microns) optional if increased sensitivity for elements of lower atomic weight (boron to potassium) is required
- In both cases, the thin beryllium window allows best transmission of radiation efficient for light elements excitation
- Analyses take place within a vacuum chamber closed by a single lid. The number of vacuum seals are therefore minimized and hence the risk of leakage.
- Constant temperature control as well as regulated vacuum pressure assure excellent short and long term stability

Power supply

A choice to suit the application

ARL 9900 Series instruments can be specified with an integrated high frequency solid-state generator of various powers to best suit each application.

- 1200 W or 2500 W power supplies are cooled their own independent circuit, thus avoiding the requirement for an external water chiller
- 3600 W power supply which will suit most applications where low limits of detection and high performance is required. The maximum output for this generator is 60 kV (70 kV optional), maximum current is 120 mA
- 4200 W for those applications requiring ultimate performance. Two types of power supply can be chosen:
 - 60 kV, current up to 120 mA (standard)
 - 70 kV, current up to 140 mA (optional), this generator provides the best performance on light elements (B to Ca) and for short wavelengths of the heavy elements as well

Sample introduction

Degrees of automation to free staff for other work

- Fast, simple and highly reliable sample introduction system using a 12-position sample changer
- Large X-Y magazine allows automatic handling of larger series of samples
- The X-Y magazine has 98 coded positions for samples in cassettes or on specific supports. The coding of each position allows unattended operation and saves time and effort in determining which sample belongs to a particular analysis. This larger magazine can easily replace the basic system if the need arises. A version of the X-Y sample changer allows connections to transport belts suitable for one sample form e.g. pressed powders in steel rings. This simple automation is named ARL SMS-XY
- Optional ARL SMS-2000 and SMS-3000 robotic systems offer fully automatic sample preparation and introduction for multiple sample forms
- With either of these options, the instrument can automatically conduct continuous process monitoring unattended and raise an alarm if any anomaly is detected. The SMS-2000 is a flexible and very powerful tool which links the whole sample preparation and analysis process. The SMS-3000 is the latest innovation in automation using a larger robot which serves both an OES and an XRF instrument



Small and large cassettes can accommodate samples of various sizes



Full automation through ARL SMS-2000



Large X-Y sample changer

ARL 9900 Series
X-ray fluorescence spectrometers
with integrated XRD capability

Full microprocessor control

Putting the emphasis on reliability and ease of use

Full digital control makes the ARL 9900 easy to use. It also ensures consistent results over many operations.

The microprocessor architecture comprises clusters of microprocessors, microcontrollers and digital signal processors connected by full duplex links. They control the overall operation of the instrument, monitor several hundred status points every few seconds and direct the goniometer(s), integrated diffraction systems and monochromator functions.

The analyst's instructions are processed in the master microprocessor and sent to the appropriate cluster. The resulting analytical data is displayed on the video screen. For convenience, current operations can be followed on a synoptic panel.

Fixed monochromators

High speed simultaneous analysis

Fixed channels offer fast analysis, high sensitivity and rapid processing as each one is dedicated to detecting and analyzing just a single element. The ARL 9900 Series can be equipped with up to 32 monochromators for simultaneous analysis or 24 of them when a goniometer is fitted.

Compact slit-crystal geometry optimizes the sensitivity and spectral background levels to permit detection of elements at very low concentrations. The latest detectors ensure a wider linearity of response and very precise analysis. In a simultaneous configuration there is no need of detector gas for all elements from Na.

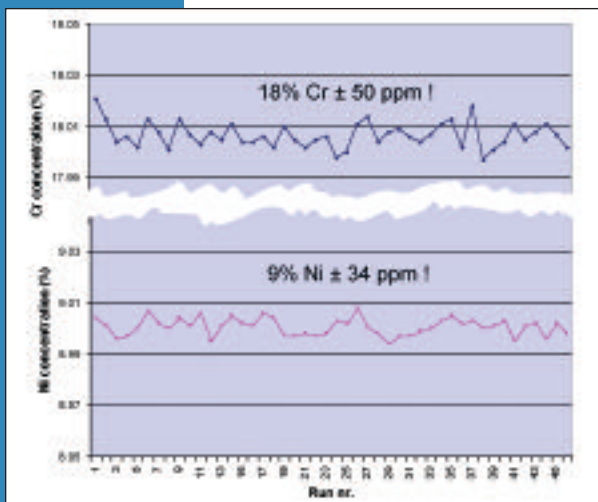
Each monochromator has its own temperature control system (to $\pm 0.1^\circ\text{C}$) ensuring excellent stability of analysis. For the analysis of light elements, multilayer synthetic crystals are used. Adjustment of pulse height discrimination, high voltage and deadtime correction are totally programmed through the software.

Goniometers

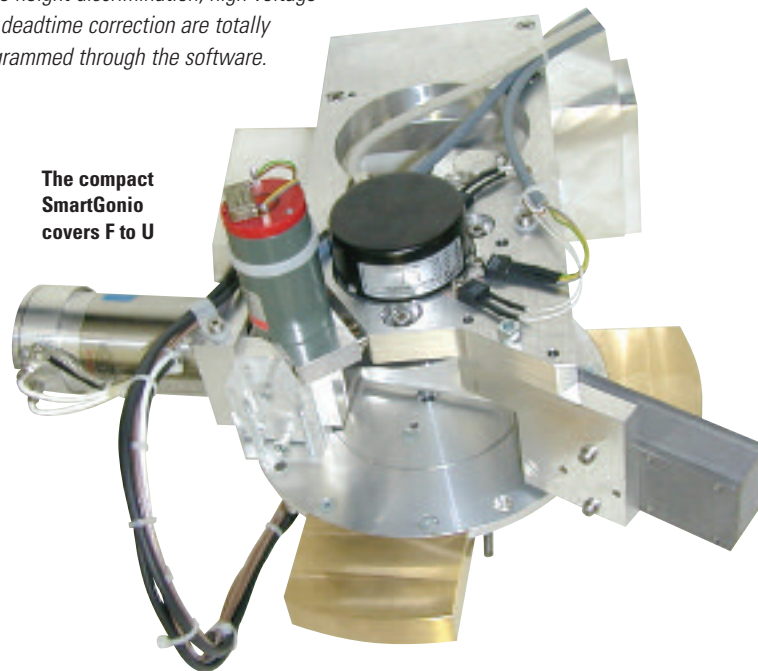
Very precise sequential analysis

The goniometers can be programmed to analyze specific elements (quantitative analysis) or to scan the X-ray spectrum to detect elements present in a given sample (qualitative analysis). Two very fast and highly accurate gearless goniometers allowing qualitative, quantitative and standard-less analysis are offered for ARL 9900 Series instruments.

The availability of the SmartGonio™ distinguishes the ARL 9900 from its predecessors. The SmartGonio™ allows analysis of elements from F to U. It is a compact goniometer using three crystals and two detectors to provide a versatile and affordable detection system. Up to three SmartGonio™ can be fitted in the instrument.



Excellent repeatability for Cr and Ni over 24 hours



The F45 universal goniometer is the alternative when additional crystals and collimators are required for specific applications. Up to two universal goniometers can be fitted.

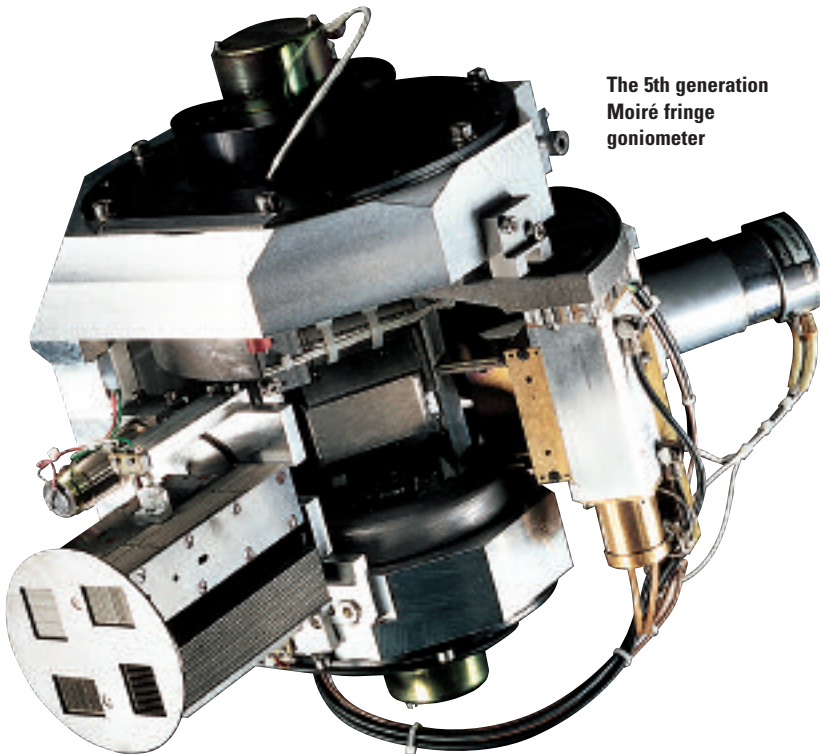
Both goniometers provide high quality sequential X-ray spectrometry as a result of the crystal and detector being positioned rapidly with great precision by microprocessors using Moiré fringe technology. This design brings several important advantages

- Fast positioning – a slewing speed of up to 4800° 2theta per minute is five times faster than a conventional goniometer and up to twenty times faster than a scanner.
- Automatic alignment of the theta/2theta angular relationship between crystal and detector – this alignment is performed electronically by the microprocessor and, unlike conventional systems, no mechanical adjustments are needed.

- Rapid qualitative analysis – continuous digital scanning allows fast acquisition of spectra at speeds up to 320°/minute. Peak identification is automatic.
- No wear, no performance degradation – the absence of gears, hence of friction, makes them 'no wear' systems assuring consistent excellent angular reproducibility ($< \pm 0.0002^\circ$) and precision (0.001°).
- High accuracy of peak positions (e.g. 0.01° with LiF crystal) – analytical peaks are found exactly in their theoretical positions, a performance up to ten times better than conventional systems.
- Independent rotation of crystal and detectors allows two detectors to be mounted side by side. Secondary collimators in front of each detector optimize count-rate or resolution.

- When specialized applications require specific crystals, up to nine of them can be fitted on the universal goniometer allowing the analyst to choose the best crystal for each region of the X-ray spectrum. Up to four primary collimators (fine, medium, coarse, extra-coarse) are available in order to optimize resolution or intensity.

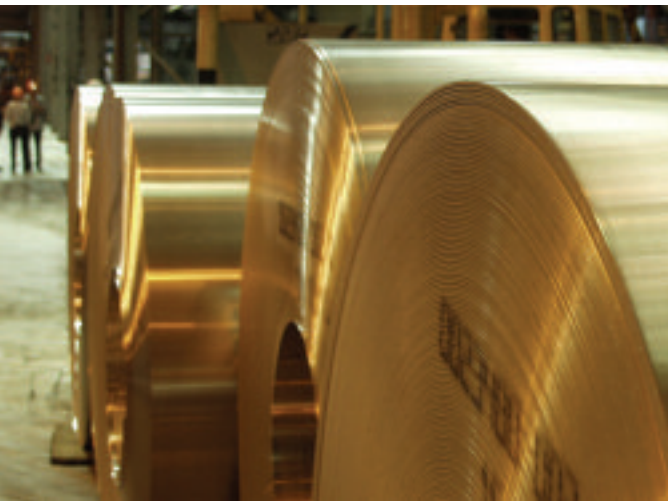
Both goniometers offer full capability for the analysis of non-routine elements. They can back up any of the fixed channels and provide standard-less analysis when coupled to appropriate software packages (e.g. QuantAS™ and UniQuant® with the universal goniometer and OptiQuant™ with the SmartGonio™).



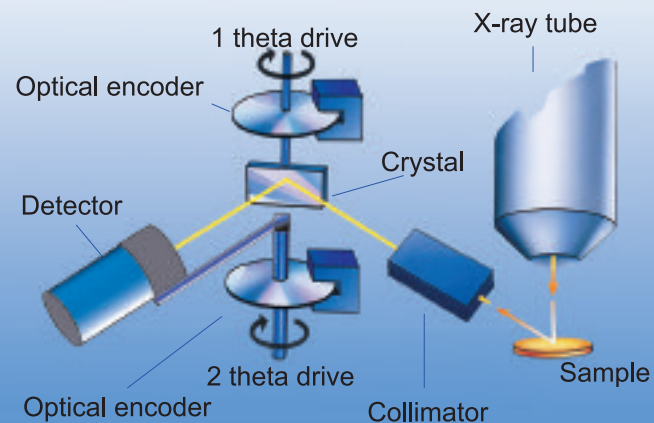
The 5th generation Moiré fringe goniometer



Analytical Assistant helps definition of analytical programs, calibrations and instrument use



Goniometer principle of operation



- Angular positioning to ensure $\theta/2\theta$ relationship between crystal and detector is achieved through Moiré fringe optical encoders:
 - no friction
 - no wear!
 - Excellent angular positioning accuracy
- Temperature regulation of crystals for best analytical stability

Two techniques integrated in a single instrument

XRF and XRD capability in one instrument

X-ray fluorescence (XRF) analysis determines the elemental composition of a sample but does not provide information about how the various elements are combined together. Such mineralogical information is only available through **X-ray diffraction (XRD)**. In a typical crystalline sample, XRF might measure for example the total Ca concentration or the total Fe concentration. XRD permits analysis of the phases or compounds in crystalline materials such as rocks, minerals and oxide materials and products. So in the same sample, XRD takes the analysis a stage further and gives information about the CaO, CaCO₃, Ca(OH)₂ content and other Ca phases or the levels of the Fe phases, such as FeO, Fe₂O₃, Fe₃O₄, Fe₃C and other Fe phases. Therefore combining the results of both XRF and XRD techniques allows for a better and more complete characterization of any given crystalline sample.

Undertaking both types of analysis has traditionally called for two separate X-ray instruments, maintained and operated at significant cost to the user. But the integration of innovative X-ray diffraction systems allows both techniques to be included in the same ARL 9900 instrument bringing significant advantages to the user, e.g:

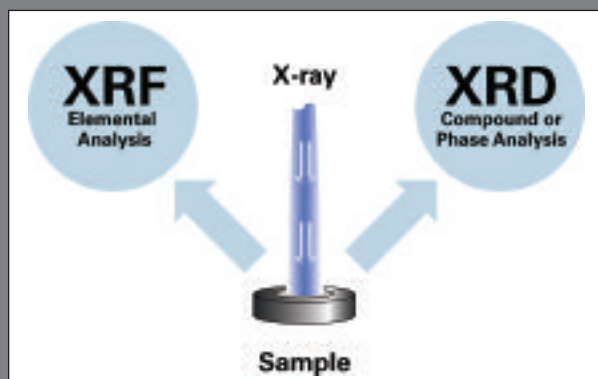
- Only one sample introduction
- Single user interface for both techniques,
- Elemental and phase results merged into one single analysis bulletin
- Minimized floor space

Compact integrated XRD system

Productive, precise, patented

Our **compact integrated XRD system** is capable of making qualitative scans and quantitative analysis thanks to the high precision of its Moiré fringe positioning mechanism. Accurate sample positioning and parallel beam X-ray geometry prevent any sample alignment problems. The benefits of working under vacuum and in a stable temperature environment are the excellent sensitivity and repeatability of analysis, notably for sensitive phases like free lime. Typical and documented applications are among others:

- Free lime in clinker and in slags
- Clinker phases
- Fe²⁺ determination in sinters
- Iron phases in DRI (Direct Reduced Iron) processes
- Phases related to electrolysis of aluminium
- Other mineral and mining applications



Integration of XRF and XRD in the same instrument: one sample, one instrument, one analysis for two techniques



Packaging - Processing
Bid on Equipment
1-847-683-7720

www.bid-on-equipment.com

ARL 9900 X-ray WorkStation™

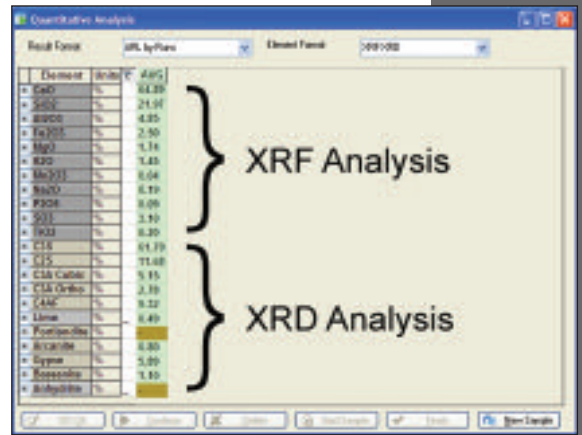
Full integrated X-ray diffraction

Unique, fast, patented

The innovative NeXRD, a full X-ray diffraction facility for phase analysis integrated into the ARL 9900 WorkStation, provides qualitative scans and quantitative analysis thanks to the high precision of its Moiré fringe positioning mechanisms. Accurate sample positioning and the temperature stabilized environment of the ARL 9900 produce excellent stability of analysis. Working under vacuum permits the use of a cobalt anode X-ray tube that prevents any fluorescence of iron which is common with copper anode tubes. Avoiding any iron fluorescence minimizes the spectral background and greatly improves the peak to background ratio. The NeXRD system is also unique as it permits to obtain a full diffraction scan leading to quantitative analysis either for process control monitoring or for phase investigation of unknown materials. Full pattern quantitative phase analysis can be obtained within 5 minutes thanks to automatic interpretation of the XRD pattern through Visual CRYSTAL® software and direct report on the instrument analytical software. Coupling this capability to the elemental determination by XRF provides you with total analytical capabilities never seen before.

Applications

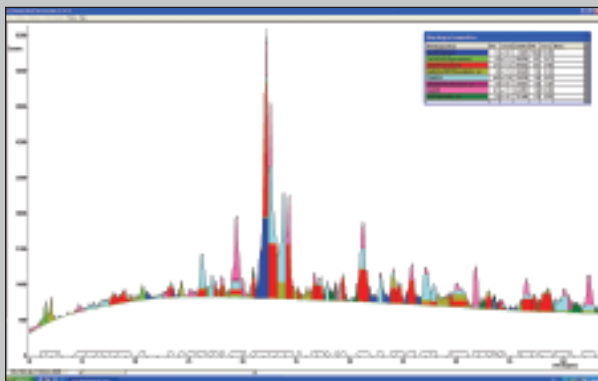
Separate application notes are available describing how the advantages of a combined instrument can be applied to process monitoring in industries such as cement, iron and steel, aluminum as well as other mining processes involving iron ores, limestone, slags, sinters and beach sands among others.



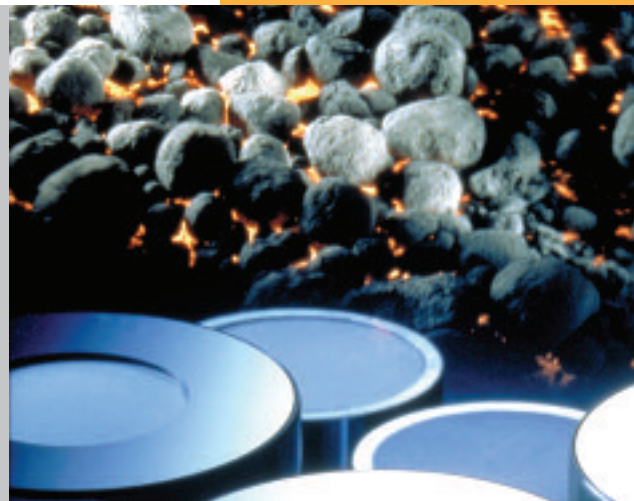
The X-ray WorkStation submits XRF results and phases quantification by XRD in a single analysis bulletin

Benefits of the ARL 9900 X-ray WorkStation

- Only one sample introduction
- Easier integration into the process control
- Faster analysis
- XRF and XRD results in a single analytical report
- No compromise in XRF and XRD performance
- Can be used as XRF only, or XRD only or both
- Unmatched stability thanks to vacuum and temperature stabilized environment
- Easier user training and quicker commissioning
- Intelligent user's interface for seamless integration of XRF and XRD
- No external water chiller at 1200W and 2500W
- Less laboratory floor space
- Simple link to automatic preparation machines for full automation
- Attractive total costs of ownership



Interpretation of a full XRD scan to provide XRD quantitative data



Software

Reliable analysis made easy

Operating the ARL 9900 and the rapid processing of data to deliver highly accurate analytical reports is achieved through state-of-the-art OXSAS software. OXSAS is a very modern software platform that is designed to evolve to meet customer's needs with up-to-date solutions throughout the lifetime of the instrument. It uses the Windows® XP Professional operating system.

More details can be found in a separate Product Specification but its key features and benefits are:

- State-of-the art 32 bits software with very modern Graphic User Interface
 - Complete and very rich functionality
 - Mature software with many convenient features
 - Ease of use, no matter what requirements are. From simple tasks to complex jobs, all defined easily and performed quickly
 - OXSAS allows performing rapid high quality analysis with templates leading through the analysis operation
 - Simple definition and comprehensive operation of sample batches. With support of priority samples. Makes unattended analysis handy
 - Integrated Analytical Assistant guides the creation or extension of methods with best analytical parameters for rapid and accurate analyses
 - Fast calibration with multiple analyte curve display, instant base curve calculation, templates fro edition and measurement of calibration standards. Calibration curve determination using multi-variable regression wit a range of correction models and integrated theoretical alphas calculation
 - Optional standard-less analysis packages: UniQuant, OptiQuant, and the semi-quantitative QuantAS offer additional analysis versatility
 - Flexible display of scans with graphical interface.
- Multi-purpose analysis display with wide-ranging optional data, e.g. the analysis calculation steps help the validation of methods
 - Numerous customizable on-line processing functions, with manual or automatic application
 - Comprehensive post-treatment of results, including direct export to Excel (*.xls files)
 - Real on-line integrated Statistical Process Control (SPC)
 - SCT Manager provides status and history of Setting-up Samples, Control samples and Type standards thus giving overview of the analytical capability of the instrument and of each method at any time
 - Easy to run: one click creation of a batch including all samples requiring analysis
 - Effective monitoring and maintenance tools maximize the system uptime
 - Very comprehensive contextual Help including "How-To" guides
 - Integrated Microsoft® SQL Server 2005 Express relational database which stores your set-up and analyses data
 - Runs both XRF and XRD analyses and merges each one into a single result

Other options for OXSAS software:

- SPC-full: On-line Statistical Process Control, full graphical package extension
- ARLcom: Software package for the transmission of results using network and serial communication
 - Network: result transmission solutions via Local Area Network to computer applications using TCP/IP or to files
 - Serial: result transmission solutions to computers, printers or terminals over serial RS-232 lines
- OEM mode: connection to an external process computer for automation purposes.
- Link to Visual CRYSTAL® for XRD quantitative analysis, included with X-ray WorkStation

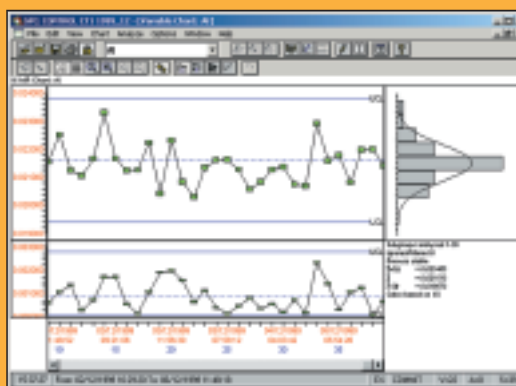
Quantitative analysis

Accuracy made easy

Analytical programmes and calibrations are defined with the help of the on-line Analytical Assistant. Calibration curves are built using the multi-variable regression (MVR) programme.

Correction models are used to minimize the influence of interfering elements in multi-component matrices and achieve better accuracy of analysis. These models are:

- Line overlap correction
- Additive correction on intensities
- Additive correction on concentrations
- Multiplicative correction on intensities
- Multiplicative correction on concentrations
- Multiplicative and additive corrections on concentrations
- COmprehensive LAchance (COLA) with 3 term alphas to be used with the NBSGSC fundamental parameters programme, which can simulate analytical calibrations for homogeneous materials. Inter-element correction factors (theoretical alphas) are calculated and used as known coefficients in the MVR. This minimizes the number of standards necessary to produce calibrations and improves the accuracy of analysis.



Statistical Process Control - Typical screen



MVR calibration curve: real concentrations vs. intensities

Total Elemental Analysis

When the F45 universal goniometer is specified, there is the choice of standard-less analytical packages on option:

- QuantAS™ automatically processes a wide scan covering up to 70 elements from F to U
 - Semi-quantitative analysis can be produced within three minutes
 - Automatic smoothing, background subtraction, peak identification, overlap and matrix corrections, calculation of semi-quantitative concentrations and normalization to give a fast and easy semi-quantitative analysis of unknown samples
- UniQuant provides standard-less results in 14 minutes or less depending on the number of elements analyzed. The extended counting time per element makes it the first choice if the application puts emphasis on great accuracy and the detection of low concentration levels.
 - Standard-less analysis of up to 79 elements when specific standards are not available. Ideal when samples are obtained
 - In small quantities
 - In irregular shapes
 - As coatings

- Calculation of the balance of unanalyzed elements present in the sample - (e.g. organic and ultra-light elements) – is a valuable feature
- The SmartGonio™ comes with OptiQuant™ software, an option which is a version of UniQuant optimized for use with the SmartGonio™
 - Standard-less analysis of up to 75 elements

The QuantAS, UniQuant and OptiQuant packages are fully calibrated and installed in the factory. They are therefore ready to use immediately after the instrument is commissioned. Stable samples for setting-up and maintenance over time are included.

Turnkey calibrations

Ex-works calibrations can be delivered for various materials such as:

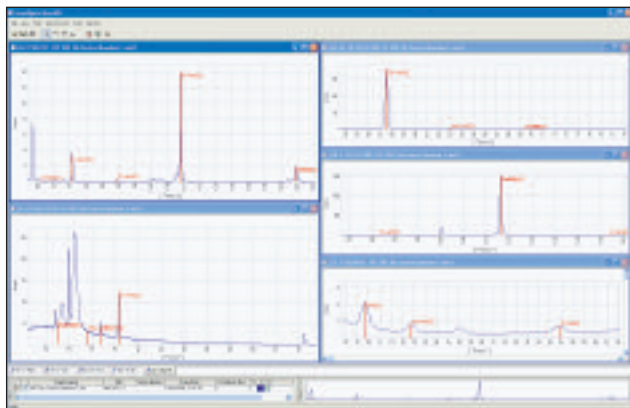
- Iron, steel and slags
- Copper, bronze and brass
- Aluminum and alloys
- Nickel, stellite and super-alloys
- Various oxides through the General Oxide calibration
- Traces in soils and sediments
- Ferro-alloys and others for which analytical specifications are available on request

Customer support

The backing of a major international corporation

Thermo Fisher Scientific offers you worldwide support.

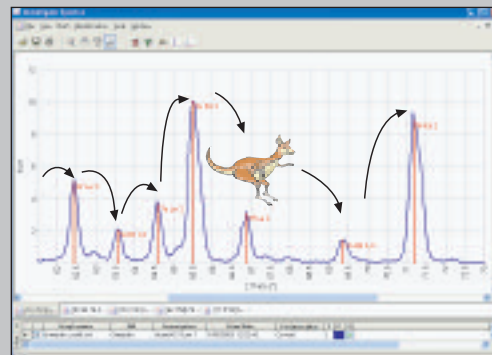
- Application product teams can advise on the most suitable ARL 9900 for a given application and help to draw up specifications
- Dedicated training allows operators to exploit to the full the capabilities of their ARL 9900
- A comprehensive worldwide after-sales service network assists with the resolution of day to day queries and ensures that the ARL 9900 achieves the very high standards of reliability and durability it is designed to give



Example of QuantAS scans from which concentrations for the various elements in the sample are derived



UniQuant, the world renowned "standard-less" analysis package from Thermo Scientific



UniQuant and OptiQuant use "peak hopping" to acquire intensities for up to 133 line positions

General specifications for ARL 9900 IntelliPower

Element range

Boron (Nr. 5) to transuranics (>Nr. 92) providing all necessary crystals are fitted on a universal goniometer. Fluorine (Nr. 9) to transuranics (>Nr. 92) with SmartGonio

Spectrometer environment

Stabilized vacuum using molecular pump

Spectrometer design

Analysis devices contained in a vacuum chamber made of grey cast iron and temperature controlled at $\pm 0.3^\circ\text{C}$.

Temperature control by a differential heating and cooling system. Crystals regulated to $\pm 0.1^\circ\text{C}$.

Spectrometer arrangement

X-ray tube mounted vertically at 90° above sample surface. Analytical devices positioned on a 360° ring looking down at the sample surface.

X-ray tube

High performance Rh anode end window tube with thin Be window (0.075 mm). Extra thin (0.05 mm) window option further increases sensitivity for light elements. Optional W or Mo anodes with 0.125 mm Be window.

Monochromators

Fixed mechanical systems using curved crystal optics (flat optics for light elements) and flow proportional, sealed and scintillation detectors. Each monochromator has its individual temperature control to $\pm 0.1^\circ\text{C}$. For ultra-high countrates, absorbing filters can be fitted. Dual Pulse height integration to discriminate and correct for 2nd order peaks.

Universal Goniometer

Gearless, microprocessor controlled goniometer using optical encoders. Fully automatic programming of:

- Up to 9 flat crystals
- Up to 4 primary collimators: fine, medium, coarse, extra-coarse
- 2 detectors: scintillation and flow proportional (Ar/CH4 10 %: flow 5 to 10 ml/min)

Independent rotation of crystals and detectors

Maximum slewing speed: $4800^\circ 2\theta/\text{min}$
Accuracy of peak positions vs. ASTM table on LiF crystals: 0.015°

Angular reproducibility $< \pm 0.0002^\circ$

Angular resolution 0.001°

Total angle range: $0^\circ\text{-}153^\circ 2\theta$ (Flow proportional counter: $17^\circ\text{-}153^\circ$. Scintillation counter: $0^\circ\text{-}115^\circ$)

Continuous digital scans: from $0.25^\circ/\text{min}$ to $327^\circ/\text{min}$ as function of measuring time and increment.

Step scan range: Minimum step: 0.001° .

Maximum practical: 1.00°

Time of measurement for each step:

0.1 s. - 655 s.

SmartGonio

Gearless, microprocessor controlled compact goniometer using optical encoders.

Fully automatic programming of:

- 3 flat crystals
- 2 detectors: scintillation and flow proportional (Ar/CH4 10 %: flow 5 to 10 ml/min)

Fixed collimator selected according to customer's application

Independent rotation of crystals and detectors

Maximum slewing speed: $5500^\circ 2\theta/\text{min}$
Accuracy of peak positions vs. ASTM table on LiF crystals: 0.015°

Angular reproducibility $< \pm 0.0002^\circ$

Angular resolution 0.001°

Total angle range: $0^\circ\text{-}150^\circ 2\theta$ (Flow proportional counter: $17^\circ\text{-}150^\circ$. Scintillation counter: $0^\circ\text{-}90^\circ$)

Continuous digital scans: from $0.25^\circ/\text{min}$ to $320^\circ/\text{min}$ as function of measuring time and increment.

Step scan range: Minimum step: 0.001° .

Maximum practical: 1.00

Time of measurement for each step:

0.1 s. - 655 s.

Compact Patented XRD system

Microprocessor-controlled compact X-ray diffraction system for determination of phase content in various process monitoring

X-ray WorkStation™ including NeXRD™

Full X-ray diffraction system integrated using Co anode X-ray tube and theta/theta geometry.

- Includes additional solid state 2 kW high frequency generator. Maximum line voltage variation -15 % to +10 %.
- Stability ± 0.0001 % per 1 % variation.
- Dimensions: H 59 cm, L 78 cm, W 29 cm
- Typical capacity of the X-ray WorkStation (no PBF):
 - NeXRD + 12 fixed channels
 - NeXRD + 1 SmartGonio + 6 fixed channels.
 - NeXRD + 1 universal goniometer with single collimator + 5 fixed channels
- Cassettes opening of 33mm diameter.
- Additional weight: 55kg

Counting electronics

Multi-channel analyzer to discriminate peaks of higher energy.

Digital Automatic Gain Control (AGC) for pulse shrinkage correction. Automatic dead time correction ensures linearity of response up to 2 Mcps on flow proportional counter, 1.5 Mcps on scintillation counter, 1 Mcps on sealed detectors.

Sample changer and cassettes

Basic magazine: 12 cassettes for samples of max. height 40 mm and diameter 60 mm. Large capacity X-Y changer: 98 cassettes for samples of max. height 30 mm and diameter 52 mm or 98 samples on supports for direct introduction. Exposed opening 29 mm diameter (basic). Rotation of cassettes in analysis position: 60 rpm. Large changer is easily retrofittable.

Primary beam filter

Up to 4 position programmable primary beam filter for modifying X-ray excitation.

- Cu: For analysis of Ru, Rh, Pd, Ag and Cd (elements that are interfered by Rh lines from the X-ray tube) in light and variable matrices
- Al: To improve peak to background ratio on Pb or As in light matrices
- Others filters on request

Laboratory information

Optional phone service support through Modem connection. Safety standards: Electrical and protection: IEC 1010-1, IEC 950. Radiation (fully protected system): ORap (CH)414.501 and BGB1.1 norms ($< 1 \mu\text{Sv/h}$). Electro-magnetic immunity: CENELEC EN 50081-2 + EN 50082-2 (industrial).

Particular specifications for ARL 9900 IntelliPower 1200/2500

Spectrometer capacity

- 12 fixed channels or
- 1 goniometer + 8 fixed channels or
- 1 goniometer + 1 compact XRD system + 8 fixed channels.

X-ray generator for 1200W

Solid state 1.2 kW high frequency generator of maximum voltage 50 kV and maximum current 40 mA. All kV/mA combinations must be chosen to be less than 1200 W. Maximum line voltage variation -15 % to +10 %. Stability ± 0.0001 % per 1 % variation.

X-ray generator for 2500W

Solid state 2.5 kW high frequency generator of maximum voltage 60 kV and maximum current 100 mA. All kV/mA combinations must be chosen to be less than 2500 W. Maximum line voltage variation -15 % to +10 %. Stability ± 0.0001 % per 1 % variation.

Power requirements

3.5 kVA single phase for 1200W
5 kVA single phase for 2500W

Cooling system

Closed circuit for deionised water flowing through liquid/air heat exchanger. Flow is regulated between 0.5 and 5 lt/min according to generator setting (to keep X-ray tube temperature constant)

Dimensions and weight for 1200W

H 166 cm, D 136.5 cm, W 93 cm with basic sample changer + H 31 cm, L 42 cm, W 20 cm. Weight: 760 kg

Dimensions and weight for 2500W

H 166 cm, D 136.5 cm, W 93 cm with basic sample changer + H 47 cm, L 83.5 cm, W 41 cm. Weight: 775 kg

Particular specifications for ARL 9900 IntelliPower 3600/4200

Spectrometer capacity

- 32 fixed channels or
- 1 goniometer + 24 fixed channels or
- 1 goniometer + 1 compact XRD system + 14 fixed channels

Up to three goniometers configurations also available.

X-ray generator for 3600W

Solid state 3.6 kW high frequency generator (max. settings: 60 kV-60 mA or 30 kV-120 mA). 70 kV option (max. settings: 70 kV-51 mA or 30 kV-120 mA). All combinations must be chosen to be less than 3600 W. Maximum line voltage variation -15 % to +10 %. Stability ± 0.0001 % per 1 % variation.

X-ray generator for 4200W

Solid state 4.2 kW high frequency generator (max. settings: 60 kV-70 mA or 35 kV-120 mA). Optional top performance generator (max. settings: 70 kV-60 mA or 30 kV-140 mA). All combinations must be chosen to be less than 4200 W. Maximum line voltage variation -15 % to +10 %.

Stability ± 0.0001 % per 1 % variation.

Power requirements

6 kVA single phase for 3600W
7 kVA single phase for 4200W

Cooling system

Built-in closed circuit for deionised water flowing through liquid/liquid heat exchanger. External water needed is $<20^{\circ}\text{C}$, pressure ≥ 2 bar, flow is regulated between 0.5 and 4.5 lt/min according to generator setting (water consumption minimization).

Dimensions

H 166 cm, D 136.5 cm, W 93 cm with basic sample changer

System weight

750 kg