

T H E R M A L C A R E

**FT SERIES  
FIBERGLASS COOLING TOWERS**

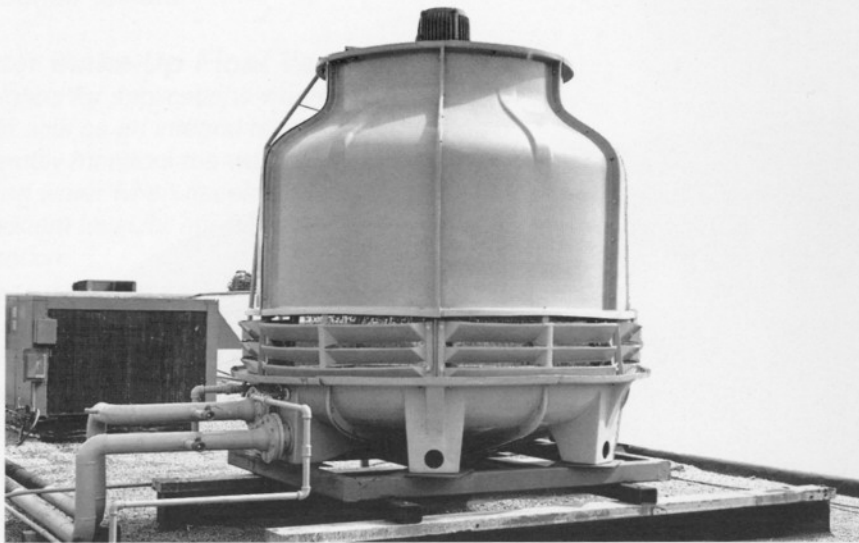


Packaging - Processing  
**Bid on Equipment**  
1-847-683-7720  
[www.bid-on-equipment.com](http://www.bid-on-equipment.com)

*FT Towers*

# THERMAL CARE

## High efficiency cooling without high cost



Thermal Care towers can be installed on cement pads, or roof mounted like this 80 ton model.

Since we first introduced our lightweight, corrosion resistant cooling towers, Thermal Care has continued to perfect them. Today's FT Series is the result of more than 30 years of product design experience and expertise in heat transfer for the HVAC and industrial process industries.

**Lightweight and corrosion resistant**  
Available from 15 to 120 tons, our high performance fiberglass cooling towers are designed for long life and low maintenance at a competitive price. And, the savings begin at installation because FT Series Towers weigh considerably less than metal towers. So rigging costs are usually reduced. Additional installation savings can be attributed to single point supply and return piping connections.

**Long service life, low maintenance, low energy consumption**  
But the big story is FT Series dependability. Its rugged FRP shell and PVC fill stand up to corrosion, microorganisms and harsh weather conditions. Other key components like the fan (aluminum or polypropylene) and water distribution

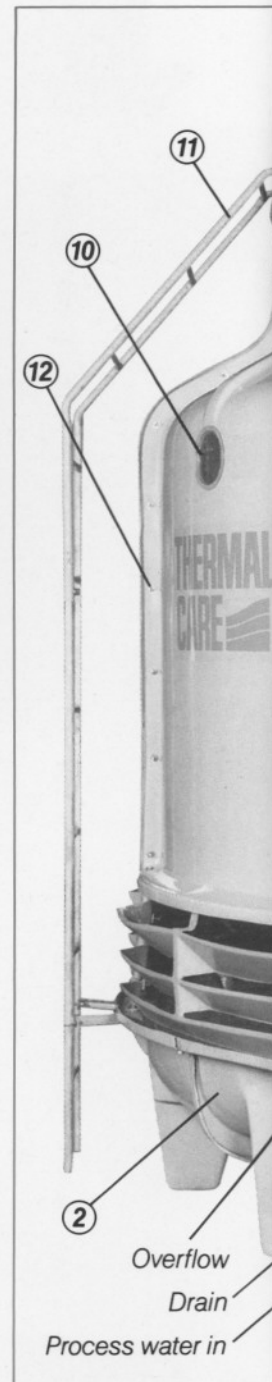
system (PVC) are also constructed of corrosion-resistant materials for longer tower life.

There's more to the FT Series story. Its energy efficient, counter flow design is carefully engineered with the optimum combination of heat transfer media, uniform air flow and even water distribution. It provides maximum air/water contact and low air pressure drop to assure efficient heat transfer while minimizing power requirements, so you save on operating costs. Semihyperbolic design creates an induced draft, providing free cooling when the fan isn't running.

Put it all together and the money you save on installation, maintenance and energy savings makes Thermal Care your best cooling tower investment—now and for years to come.

### Thermal Care service—before, during and after the sale

You can count on Thermal Care for quality products, backed by comprehensive engineering and installation services when you need them. After the sale, we protect our customers with a full 5 year warranty on the shell and 1 year on all parts and materials.



Model FT8270

**Packaging - Processing**  
**Bid on Equipment**  
1-847-683-7720

[www.bid-on-equipment.com](http://www.bid-on-equipment.com)

## Maintenance-saving features and construction make Thermal Care your best cooling tower investment



① **Rugged FRP shell** resists corrosion and the toughest weather conditions. It always maintains its strength and appearance. The upper shell is bolted together so that individual panels can be removed for easy access.

② **FRP water basin** features integral sump and mounting feet for easy cleaning and low cost installation. Standard towers have openings for supply, return with strainer, overflow, makeup water and drain.

③ **360 degree air intake** eliminates tower positioning problems due to prevailing winds or nearby structures. Reduced inlet velocity eliminates moist air recirculation problems.

④ **PVC fill** is impervious to corrosion, rot, decay, and biological attack—designed for maximum air/water contact for efficient heat transfer.

⑤ **Self-rotating sprinkler system** provides uniform water distribution—features non-clog openings and corrosion resistant, water lubricated construction for long service life.

⑥ **Cast aluminum or polypropylene direct drive fan** has no belts or pulleys to align or replace—consumes less horsepower, reduces operating cost. Adjustable pitch blades enable fine tuning of capacity.

⑦ **Totally enclosed fan motor** is designed for outdoor operation—stands up to severe service duty.

⑧ **FRP inlet louvers** won't corrode and are easy to detach for basin cleaning and fill inspection. They're designed to prevent "splash" and windage loss.

⑨ **Galvanized motor mounts and discharge grille** resist corrosion, never need painting. Grille promotes safety and prevents entry of debris.

⑩ **Convenient inspection port** for ease of sprinkler head checks, preventive maintenance and flow observation.

⑪ **Access ladder** makes it easy to reach the fan and motor. (45 tons and larger)

⑫ **Stainless steel fasteners**

## Available Options for FT Series Cooling Towers

Improve the efficiency or performance of your cooling tower system with these available options engineered and designed to work exclusively with FT Series Towers.

### **Water Make-Up Float Valve Assembly**

Designed for applications where a cooling tower basin acts as an integral reservoir. A float valve assembly monitors the water level in the basin, adding water when necessary, to maintain a consistent level for effective cooling system operation.

### **Basin Heater Package**

Prevents water in tower basin from freezing in applications where basin is used as a reservoir. Package includes electric immersion heaters, float switch and thermostat.

### **Structural Steel Base**

Designed to be mounted on four support points, these preassembled, painted steel bases can make cooling tower installation quick and easy. A tower base package can include legs up to 20 feet long with appropriate cross bracing.

### **NEMA 3R Thermostat**

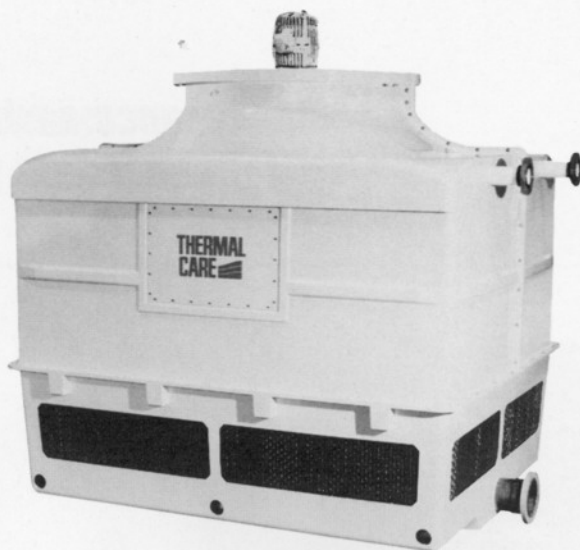
Shuts off power to fan motor when water in basin drops below a set temperature. This saves energy and provides a stable supply water temperature.

### **Vibration Protection Switch**

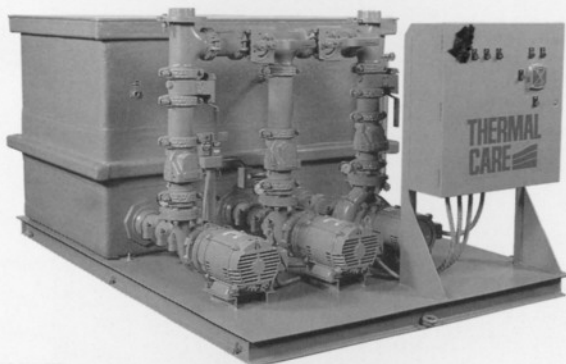
Prevents tower damage should the fan blades or motor come out of balance by disengaging the motor contactor when excessive motor vibration occurs.

### **Water Treatment Equipment**

Complete the system and protect your investment from scale and corrosion. Everything from packaged systems, sand filters, bag filters and strainers.



For larger size towers, Thermal Care's FC Series fiberglass towers are available from 100 to 240 tons. Includes 100% nonferrous construction and 5-year total tower warranty.



Thermal Care manufactures a wide range of standard and custom-designed pumping systems. Reservoirs are available in sizes up to 6,000 gallons and can be constructed of steel, stainless steel or fiberglass.

**THERMAL  
CARE**

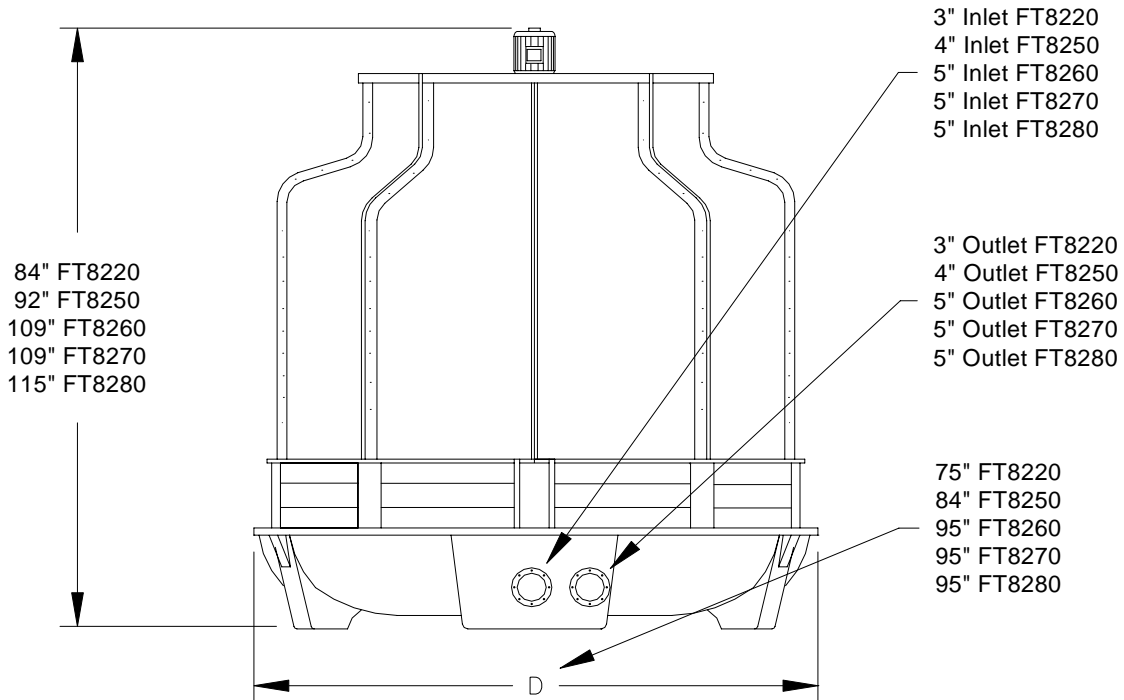
7720 N. Lehigh Avenue  
Niles, Illinois 60714-3491  
tel (847) 966-2260 Ext.2900  
fax (847) 966-9358  
e-mail [info@thermalcare.com](mailto:info@thermalcare.com)  
[www.thermalcare.com](http://www.thermalcare.com)

Manufacturer reserves the right to change specifications or design without notice or obligation. Thermal Care is a registered trademark of MFRI, Inc.

Printed in U.S.A. Form 1-2004

**Packaging - Processing  
Bid on Equipment**  
1-847-683-7720

[www.bid-on-equipment.com](http://www.bid-on-equipment.com)



Model #	Cooling Tons	Fan Motor HP	Fan Motor FLA @ 460/3/60	Nominal GPM	Minimum Inlet PSI	Operating Range GPM	Ship Weight Lbs.	Operating Weight Lbs.
FT8220	38	2	4	114	3	60 to 200	600	1,475
FT8250	60	2	5	180	5	90 to 340	750	2,100
FT8260	80	3	6	240	5	180 to 500	1,250	2,780
FT8270	100	3	6	300	5	180 to 500	1,300	2,890
FT8280	120	5	8	360	5	180 to 500	1,400	3,050

Cooling Tons based on 15,000 BTU/Hr/ton with 85°F leaving water, 78°F wet bulb and 3 GPM/Ton tower water

### Features

- TEAO direct drive fan motor with permanently sealed bearings
- Fiberglass construction of tower casing and basin
- Smooth exterior gel-coat finish with UV inhibitors
- Galvanized steel fill, motor, and drift eliminator supports
- 304 stainless steel fasteners
- PVC water distribution piping
- PVC fill and drift eliminators
- Fiberglass air inlet louvers
- Adjustable pitch cast aluminum fan blades
- Energy efficient induced draft counter flow cooling tower design
- Factory assembled (fan and motor removed to prevent shipping damage)

### Warranty

- 10 year parts warranty on cooling tower casing and basin
- 1 year parts warranty on complete tower including motor