



Fiberglass Cooling Towers

Available in sizes
from 100 to 240 tons.



▲
FC Series 700
Fiberglass Cooling Tower
Available in sizes from 170 to 240 tons.

FC Series fiberglass cooling towers come with the industry's best warranty.

Every FC Series Tower comes standard with a full 5-year warranty on the complete tower—including the motor and motor supports. The durable FRP shell comes standard with a 10-year warranty.

No other cooling tower manufacturer offers as much protection.

No other fiberglass cooling tower comes with as many high-quality standard features.

- **Constructed totally of corrosion-resistant materials.**
Everything about this tower is corrosion-resistant — even the motor supports and structural fill supports.
- **Extra protection for motor and motor windings.**
For maximum protection against moisture—exterior has double baked finish, bearings are permanently lubricated and packing enclosure comes with extra grease.
- **Full 5-year warranty on entire tower — 10-year warranty on shell.**
High-quality materials and construction allow full warranty coverage of all tower components —including the fan motor.
- **Large, non-clogging ABS nozzles.**
PVC distribution system includes large orifice nozzles that efficiently and uniformly distribute water across all fill surfaces.
- **Efficient counter flow design.**
Adjustable-pitch fan blades pull air up through tower, across fill surfaces, while water flows down through non-degradable PVC fill — outperforming cross flow towers.
- **Durable, FRP exterior tower shell.**
Entire UV-stabilized tower shell comes with a 10-year warranty and is designed to withstand high wind loads and Seismic 4 forces.
- **Leak-proof, one-piece basin.**
Installation is fast, easy and inexpensive. Units can be mounted on two I-beams or optional structural steel base.
- **Integral inlet louver system.**
Air inlet openings are covered with louvers made of durable PVC that are designed to eliminate possible back splash. Removable to allow full access to basin.
- **Smooth exterior surface.**
Flat exterior surfaces will not collect grime or dirt like towers made from male-type molds.
- **No-maintenance motor bearings.**
Hostile-duty, TEAO fan motors come with double-sealed, permanently-lubricated bearings that require no maintenance.
- **Shipped fully assembled.**
No on-site construction or fabrication as entire tower is delivered in one piece. Fan and motor are shipped loose to prevent possible shipping damage.

Fiberglass Cooling Towers

Available in sizes
from 100 to 240 tons.

Fan/motor assembly comes
with many features:

- Hostile-duty TEAO fan motor with permanently-lubricated motor bearings
- Aluminum/silicon alloy fan hubs
- Stainless steel motor support
- Adjustable-pitch, reinforced polypropylene fan blades
- Optional stainless steel fan guard



Towers come with
high-quality components:

- 1) Stainless steel fasteners
- 2) FRP shell with UV inhibitors and 10-year warranty
- 3) Pultruded FRP fill and drift eliminator supports
- 4) Access door to tower interior
- 5) PVC fill, drift eliminators and inlet louvers
- 6) ABS non-clogging water nozzles (not visible)
- 7) Schedule 40 PVC water distribution system
- 8) Optional inlet and outlet flanges

▲
FC Series 700
Fiberglass Cooling Tower
Available in sizes from 170 to 240 tons.

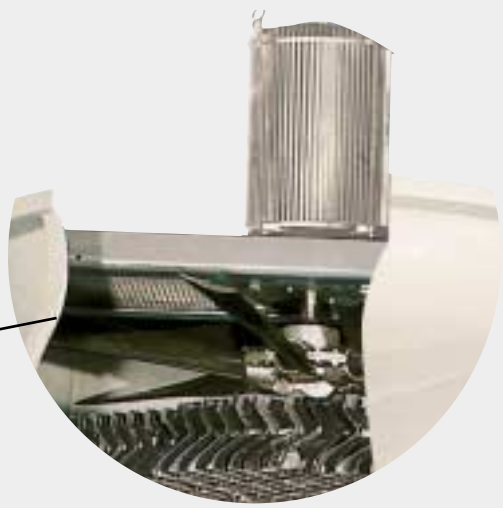
Exceptional performance
Remarkable features
Totally corrosion-resistant



▲
FC Series 600
Fiberglass Cooling Tower
Available in sizes from 100 to 140 tons.

Towers come with high-quality components:

- 1) Stainless steel fasteners
- 2) FRP shell with UV inhibitors and 10-year warranty
- 3) Pultruded FRP fill and drift eliminator supports (not visible)
- 4) Access door to tower interior
- 5) PVC fill, drift eliminators and inlet louvers
- 6) Optional inlet and outlet flanges



Fan/motor assembly comes with many features:

- Hostile-duty TEAO fan motor with permanently-lubricated motor bearings
- Aluminum/silicon alloy fan hubs
- Stainless steel motor support
- Adjustable-pitch, reinforced polypropylene fan blades
- Optional stainless steel fan guard



Towers are built using totally nonferrous materials

- Schedule 40 PVC water distribution system
- ABS non-clogging water nozzles
- Fill material is made of durable, non-degradable PVC

Improve cooling tower system performance with optional features.

Choose any of these pre-engineered options, designed to work exclusively with any Thermal Care FC Series cooling tower.

- **Fan guard**
Provides protection from items entering the fan assembly area, such as birds, branches or rocks.
- **Structural steel base**
A pre-assembled, painted steel base makes tower installation quick and easy. Designed to be mounted on four support points and comes with legs up to 20 feet long and appropriate cross bracing.
- **NEMA 3R thermostat**
Saves energy and provides stable supply water temperature by shutting off power to fan motor when water in basin drops below a set temperature.
- **Water make-up float valve assembly**
Used in applications where a tower basin acts as an integral reservoir. Float valve assembly monitors water level in basin, adding water when necessary to maintain a consistent level for maximum system performance.
- **Basin heater package**
Prevents water in basin from freezing in applications where basin is used as a reservoir. Includes electric immersion heaters, float switch and thermostat.
- **Equalization connection**
Creates a system reservoir by connecting several tower basins. Piping equalizes basin water levels by letting cooled water flow between basins.

Fiberglass towers are friendlier for the environment!

Corrosion and scale have always been problematic in evaporative cooling systems. Heavy metals and acid feeds used to control pH levels in cooling water can potentially damage system equipment or result in environmentally unacceptable discharge levels.

Newer organic inhibitors work effectively at higher pH levels but can also produce "white rust" when zinc leaches out of galvanized metal components that come in contact with cooling system water. Although effective metal passivation procedures do exist, the best solution is to take galvanized metals out of the system.

An FC Series fiberglass tower from Thermal Care is an ideal and cost-efficient alternative for your application!

Thermal Care FC Series Towers

Just one part of a reliable
process cooling system

Let Thermal Care, Inc. assess your process cooling requirements and design a customized system that meets all your cooling needs. Complete cooling systems can incorporate PLCs to provide extremely accurate temperature control and equipment diagnostics — even allowing them to be accessed by modem for a quick evaluation of system problems.

Thermal Care works with you at every step of the process from manufacturing and installation, through start-up and long-term equipment maintenance. Outstanding service and parts support after the system is operational completes our total customer support program.



Central Chillers

Water-cooled and remote condenser units are available in screw, scroll, or discus compressors. Standard features include a NEMA 4 control panel with PLC control, totally independent refrigeration circuits, and advanced electronic safeties.



Pump/Reservoir Systems

Every pump/reservoir is custom engineered for each tower or chiller application. Standard features include a NEMA 4 control panel and controller with dual digital display, alarm horn, high temperature alarm, non-overloading pumps and solid deck. Reservoirs are available in fiberglass, steel, or stainless steel in capacities up to 6000 gallons.



Water Treatment Systems and Filtration Equipment

TWC Series computer-controlled treatment systems incorporate all necessary facets of a cooling tower treatment system on a single, space-saving panel. System information is displayed on a LCD screen.

Strainer filters, sand media filters and bag filters remove suspended solids from both cooling tower and chilled water systems.

THERMAL CARE

7720 N. Lehigh Avenue
Niles, IL 60714-3491

Toll-free 888-828-7387
Telephone 847-966-2260 Ext. 2900
Facsimile 847-966-9358
www.thermalcare.com

Manufacturer reserves the right to change specifications or design without notice or obligation.
Thermal Care, Inc. is a registered trademark of MFRI, Inc.

Printed in USA Form 4-220.4



FC700 Series Fiberglass Cooling Tower

- Energy efficient induced draft, counter-flow cooling tower design
- Rugged seamless single piece basin
- Side access door
- Factory assembled (fan and motor removed prior to shipment to prevent shipping damage)

Electrical Features

- TEAO direct drive fan motor with permanently lubricated sealed motor bearings

Warranty

- 10 year parts warranty on cooling tower basin and casing
- 5 year parts warranty on complete cooling tower, including fan motor

General

The FC Series fiberglass cooling towers are designed for outdoor use in industrial manufacturing locations. The cooling towers are assembled in our ISO 9001:2000 certified facility. The cooling towers ship assembled with the fan motor and fan blade removed to prevent shipping damage.

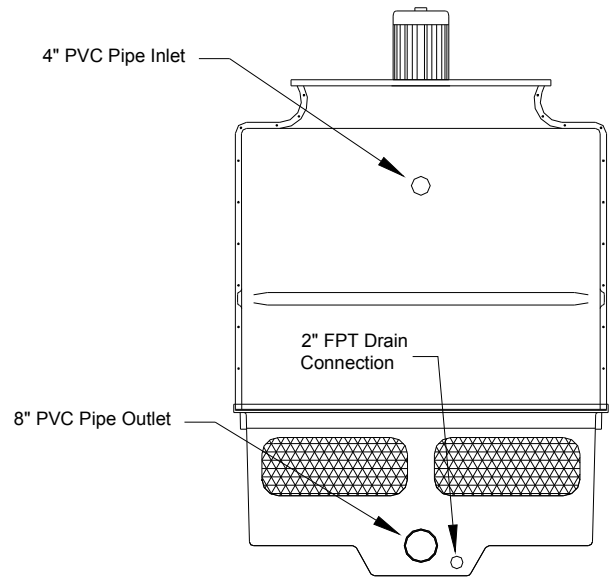
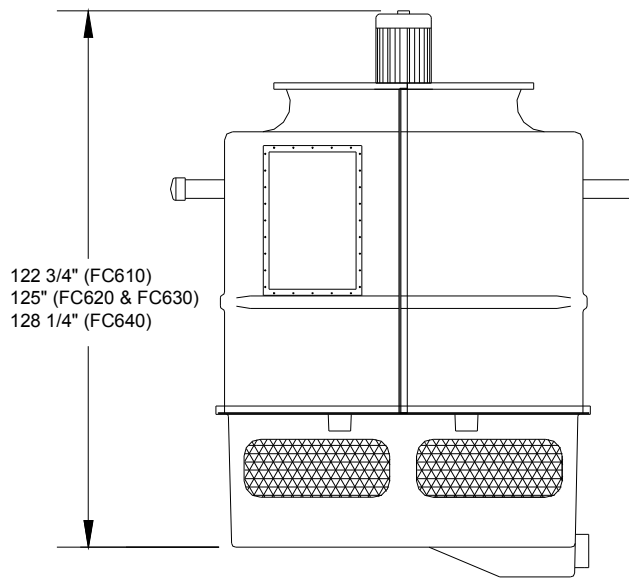
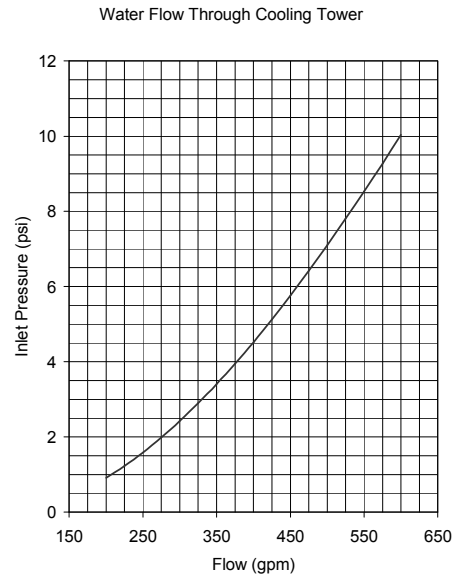
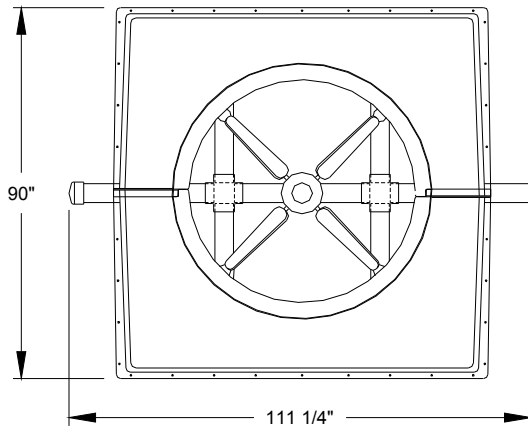
Mechanical Features

- Fiberglass construction of cooling tower basin and casing
- Fiberglass internal structural supports for the fill and drift eliminators
- Smooth exterior fiberglass with durable gel-coat finish with UV inhibitors
- 304 stainless steel fan motor support and fasteners
- Schedule 40 PVC water distribution piping
- PVC fill, inlet louvers, and drift eliminators
- Non-clogging large orifice pressurized water distribution system
- Adjustable pitch, high efficiency, fiberglass reinforced polypropylene fan blades with cast aluminum alloy fan hub



FC600 Series Fiberglass Cooling Tower

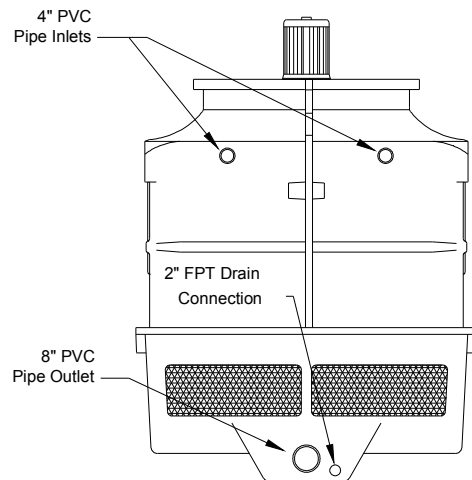
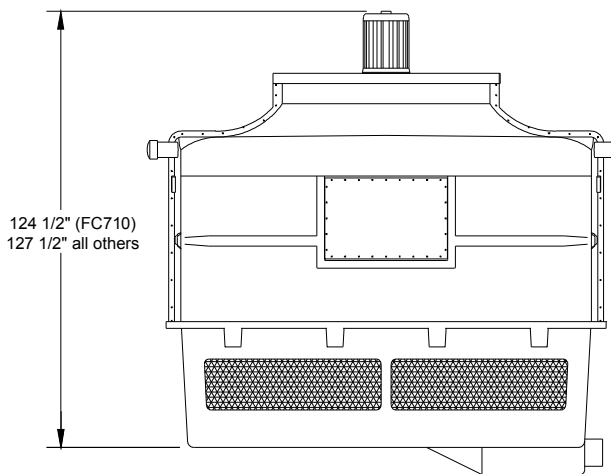
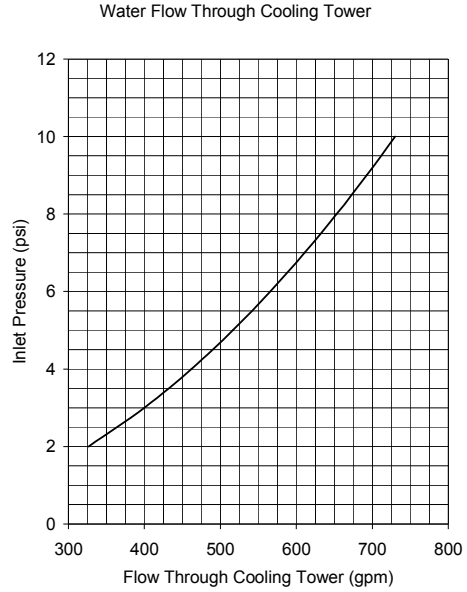
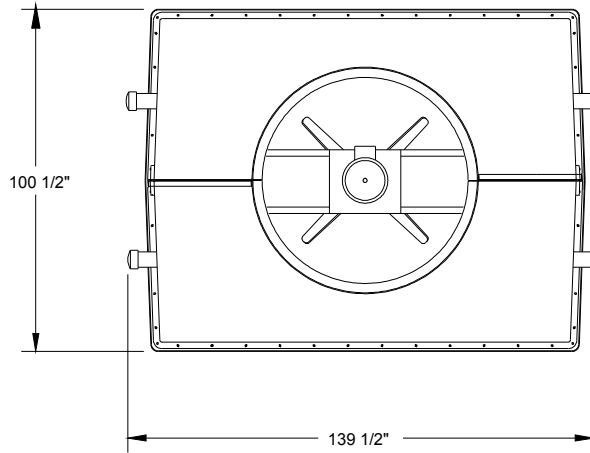
FC600 Series



Model	Cooling Tons ¹	Fan Motor (hp)	Fan Motor FLA @ 460/3/60	Nominal Flow (gpm)	Minimum Inlet Pressure (psi)	Operating Range (gpm)	Shipping Weight (lbs)	Operating Weight (lbs)
FC610	100	3	6	300	6	200 to 600	1,760	4,535
FC620	115	5	9	345	4	200 to 600	1,910	4,535
FC630	125	5	9	375	4	200 to 600	1,910	4,685
FC640	140	7½	12	420	5	200 to 600	2,150	4,925

¹Cooling Tons based on 15,000 BTU/Hr/ton with 85°F leaving water, 78°F wet bulb and 3 gpm/ton tower water.

FC700 Series



Model	Cooling Tons ¹	Fan Motor (hp)	Fan Motor FLA @ 460/3/60	Nominal Flow (gpm)	Minimum Inlet Pressure (psi)	Operating Range (gpm)	Shipping Weight (lbs)	Operating Weight (lbs)
FC710	170	7½	12	510	5	350 to 725	2,660	5,230
FC720	185	10	17	555	6	350 to 725	2,700	5,530
FC730	205	10	17	615	7	350 to 725	2,700	5,570
FC740	240	15	24	720	10	350 to 725	2,750	5,570

¹Cooling Tons based on 15,000 BTU/Hr/ton with 85°F leaving water, 78°F wet bulb and 3 gpm/ton tower water.