

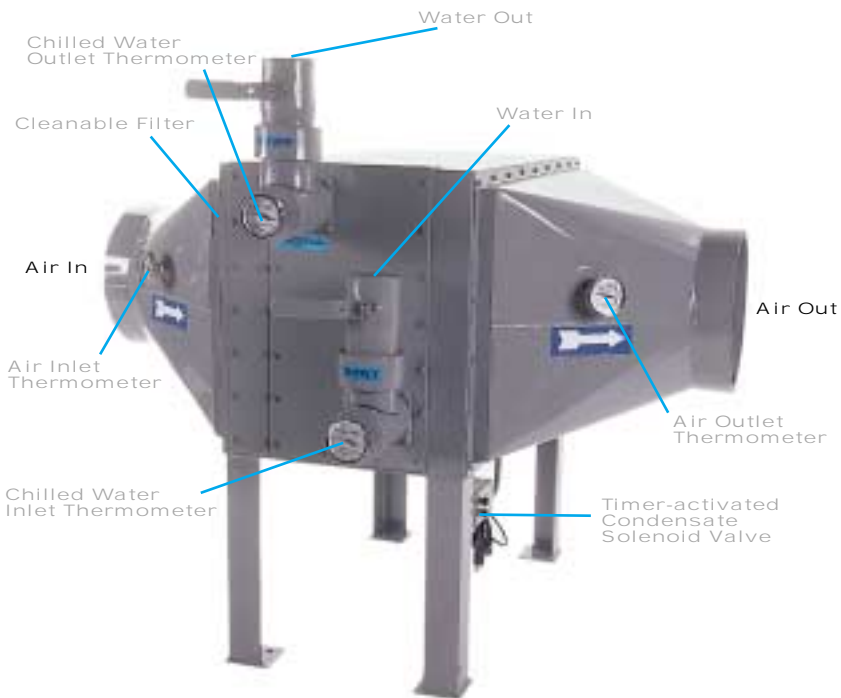
Cost-effective BFC Series Blown Film Coolers from Thermal Care, Inc.® can save energy and reduce the need for larger chillers. Units can produce cooler air from warmer water than similar models from competitive manufacturers. For example, BFC Series units produce 50°F discharge air with 45°F water when most other competitive models require water temperatures of 42°F or lower to assure the same 50°F discharge air temperature. A complete line of BFC Series units is available for applications from 200 to 5000 CFM and can be integrated into an existing blower system.

Manufacturer reserves the right to change specifications or design without notice or obligation. Thermal Care, Inc. is a registered trademark of MFRI, Inc.

7720 N. Lehigh Avenue
Niles, IL 60714-3491

Toll-free: 888-828-7387
Phone: 847-966-2260, Ext. 2900
Fax: 847-966-9358
www.thermalcare.com

Printed in USA. Form 8-210.2



Use a BFC Series Blown Film Cooler to reduce the problems that changing ambient air temperatures and poor air distribution can have on blown film production rates. Units are designed to assure a consistent 5°F temperature difference between cooling water and leaving air temperature.

Features

Heavy duty cabinet built from cold-rolled steel with epoxy painted interior.

Leaving air chamber is insulated to reduce condensation while providing the coldest possible air to ring.

Four individual thermometers are located on inlet air stream, discharge air stream, chilled water supply and chilled water return.

Units reduce energy cost by producing cooler air than competitive models using the same temperature water.

All copper-tube, aluminum-fin coils are selected in accordance with ARI Standard 410.

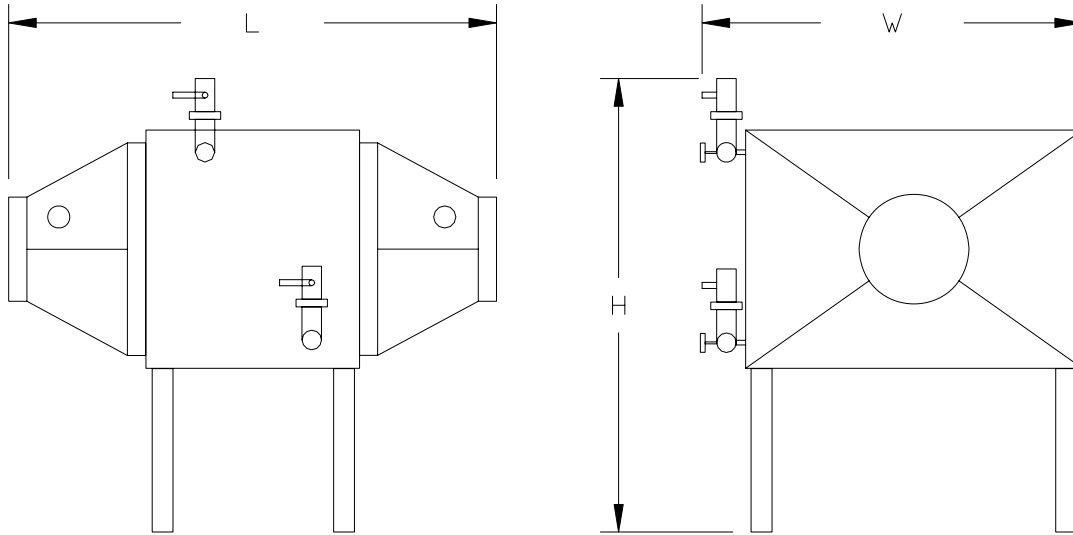
Timer-activated solenoid valve assures positive removal of condensate from drip condensate pan.

Inlet air diffuser assures air stream covers full face of cooling coil to provide optimal efficiency.

Complete, skid-mounted packages come with appropriately sized blowers.

Permanent inlet filter cleans easily.

Optional 2-way or 3-way, self-contained chilled water solenoid valve assures accurate temperature control.



Model Number	Design Air Flow (CFM)	Chiller Tons ¹	Approximate Dimensions L x W x H (Inches)	Adaptor Size (Inches)	Approximate Shipping Weight (Lbs.)
BFC600	600	5.3	42 x 25 x 35	10	430
BFC1000	1,000	8.8	42 x 25 x 38	10	430
BFC1500	1,500	13.2	57 x 36 x 40	14	680
BFC2000	2,000	17.6	57 x 36 x 48	14	730
BFC2500	2,500	21.9	59 x 45 x 48	14	875
BFC3500	3,500	30.7	63 x 49 x 54	16	1,225
BFC5000	5,000	43.8	65 x 56 x 59	18	1,870

¹Chilled water cooling tons required with entering air at 100°F dry bulb, 80°F wet bulb, and 50°F air leaving.