

# 8752P

## Soft Serve Freezer

Single Flavor, Horizon® Mix Delivery System



### Features

Offer all the popular soft serve variations from low or non-fat ice creams to custards, yogurt and sorbet. The Horizon® Mix Delivery System offers high capacity in a pressurized system with consistent overrun and simplified operation.

### Freezing Cylinder

One, 3.4 quart (3.2 liter).

### Refrigerated Mix Storage Cabinet

Lower front mix cabinet is independently refrigerated to maintain mix below 41°F (5°C). Door is hinged on the right. One, 15 gallon (57.0 liter) mix tank. The Horizon® Mix Delivery System delivers the precise amount of air and mix to the freezing cylinder.

### Indicator Lights

Mix Low light alerts the operator to add mix. When the Mix Out light flashes, the unit shuts down automatically to prevent damage.

### Electronic Controls

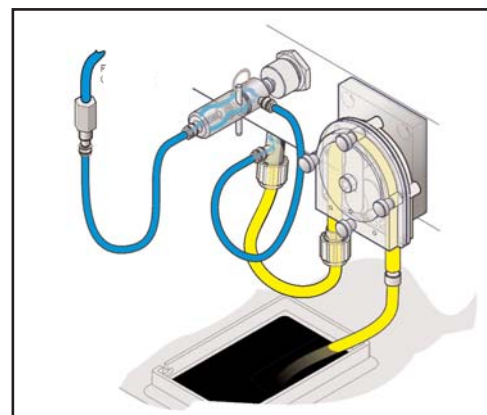
Finished product quality is monitored by Softech™ controls that measure viscosity.

### Standby

During long no-use periods, the Standby feature maintains safe product temperatures in the freezing cylinder.

### Horizon Mix Delivery System

Easy to clean and offers reliable overrun control. Simple overrun adjustment from 25 to 70% (depending on mix formulation). Ability to dispense higher butterfat or fruit products with pulp.



Standard 6

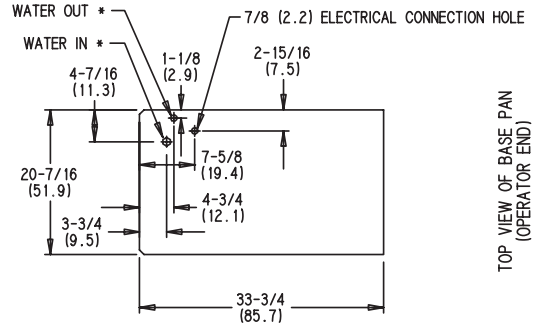
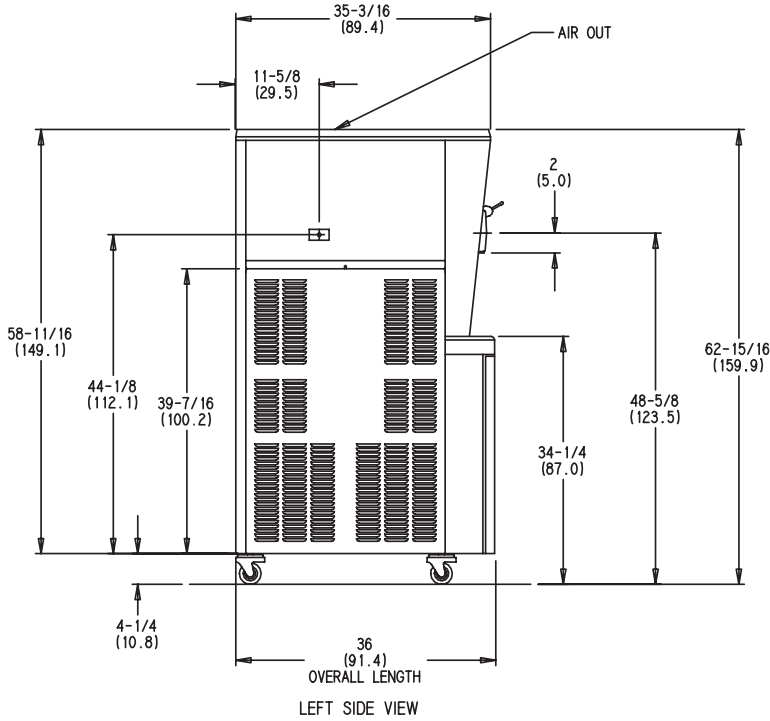


LISTED  
SA2650



Selected 50  
Hz. Models

# 8752P Soft Serve Freezer



Weights	lbs.	kgs.
Net	659	298.9
Crated	782	354.7
	cu. ft.	cu. m.
Volume	68.0	1.62

Dimensions	in.	mm.
Width	20-5/8	524
Depth	36	914
Height	62-15/16	1599
Floor Clearance	4-1/4	108

\*Mounted on standard casters

Electrical	Maximum Fuse Size	Minimum Circuit Ampacity
208-230/60/1 Air	40	30
208-230/60/1 Water	40	29
208-230/60/3 Air	30	23
208-230/60/3 Water	30	23
380-415/50/3N~ Air	15	14

*This unit may be manufactured in other electrical characteristics. Re local Taylor Distributor for availability. (For exact electrical information, always refer to the data label of the*

### Bidding Specs

Electrical: Volt \_\_\_\_\_ Hz \_\_\_\_\_ ph \_\_\_\_\_  
 Neutral:  Yes  No **Cooling:**  Air  Water  NA

Options: \_\_\_\_\_

## Specifications

### Electrical

One dedicated electrical connection is required. See the Electrical chart for the proper electrical requirements. Manufactured to be permanently connected. Consult your local Taylor distributor for cord & receptacle specifications as local codes allow.

### Beater Motor

One, 1.5 HP.

### Refrigeration System

One, 9,500 BTU/hr. R404A.  
 Mix Cabinet Refrigeration, One, 1,100 BTU/hr. R404A.  
 (BTUs may vary depending on compressor used.)

### Air Cooled

Minimum 3" (76 mm) around all sides and 12" (305 mm) on top. Minimum air clearances must be met to assure adequate air flow for optimum performance.

### Water Cooled

Water inlet and drain connections under side of base 3/8" FPT.

## Options

- Cone Dispenser
- Draw Valve Lock Kit
- Panel Spinner
- Sneeze Guard
- Syrup Rail Kit (side mount)

Continuing research results in steady improvements; therefore, these specifications are subject to change without notice.



**Taylor Company,**  
 A Division of Carrier Commercial Refrigeration, Inc.  
 Rockton, Illinois 61072  
 815-624-8333 **800-255-0626** Fax 815-624-8000  
[www.taylor-company.com](http://www.taylor-company.com)

**Packaging - Processing**  
**Bid on Equipment**  
 1-847-683-7720  
[www.bid-on-equipment.com](http://www.bid-on-equipment.com)