

632

Combination Freezer

Single Shake, Single Soft Serve

Features

Offer all the popular shake and soft serve variations, from low fat shakes and smoothies, and low or non-fat ice creams to custards, yogurt and sorbet.

Freezing Cylinder

Shake side, 7 quart (6.6 liter).
Soft Serve side, 3.4 quart (3.2 liter).

Refrigerated Mix Hoppers

Two, 20 quart (18.9 liter). Separate hopper refrigeration (SHR) maintains mix below 41°F (5°C) during Auto and Standby modes.

Indicator Lights

Mix Low light reminds operator to add mix.

Electronic Controls

Finished product quality is monitored by Softech™ controls that measure viscosity.

Standby

During long no-use periods, the standby feature maintains safe product temperatures in the mix hopper and freezing cylinder.



Optional syrup rail and panel spinner



Standard 6



SA2650



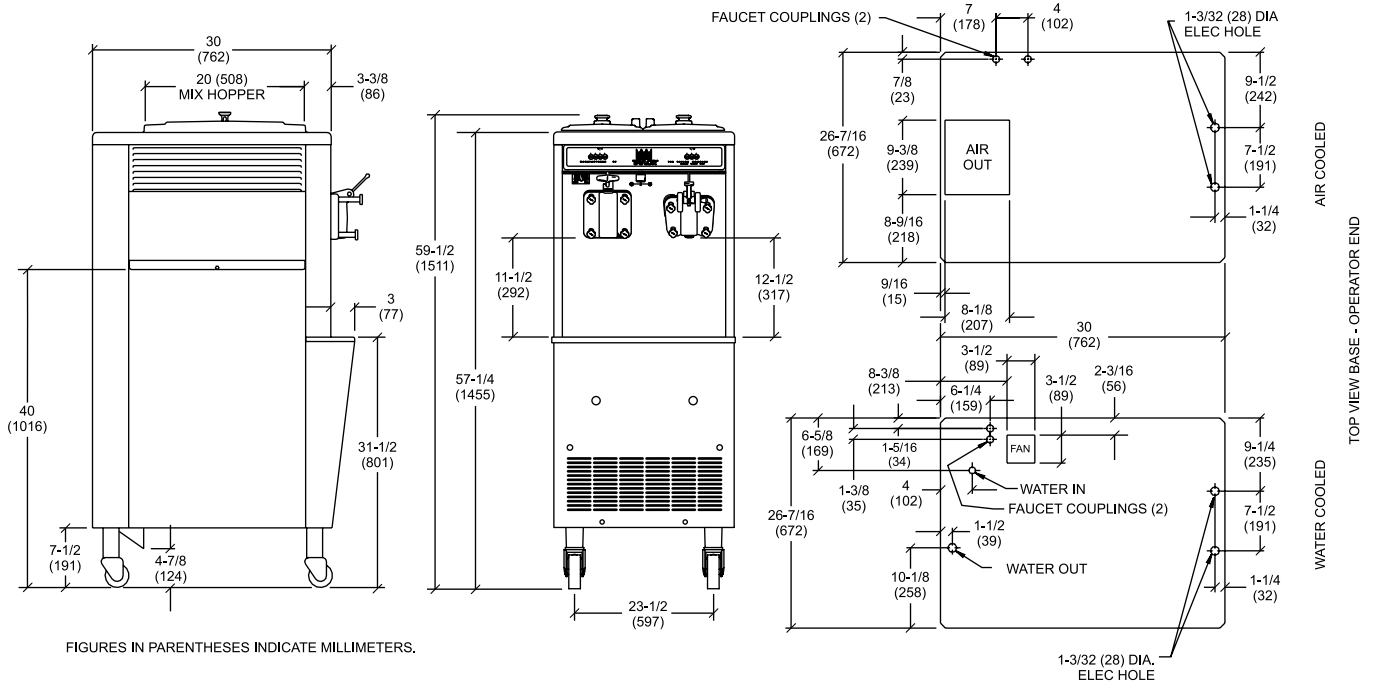
Selected 50
Hz. Models

Rockton, Illinois 61072
800-255-0626
 Phone 815-624-8333 Fax 815-624-8000
www.taylor-company.com
 e-mail: info@taylor-company.com

International Office
 Taylor Company S.r.l.
 Roma, Italy
 Tel: **+39-06-420-12002** Fax: +39-06-420-12034
 e-mail: romeoff@taylor-company.com

Packaging - Processing
Bid on Equipment
 1-847-683-7720
www.bid-on-equipment.com

632 Combination Freezer



FIGURES IN PARENTHESES INDICATE MILLIMETERS.

| Weights | lbs. | kgs. |
|---------|---------|--------|
| Net | 675 | 306.2 |
| Crated | 785 | 356.1 |
| | cu. ft. | cu. m. |
| Volume | 48.1 | 1.36 |

| Dimensions | in. | mm. |
|-----------------|---------|------|
| Width | 26-7/16 | 672 |
| Depth | 33 | 839 |
| Height | 59-1/2 | 1511 |
| Floor Clearance | 7-1/2 | 191 |

*Mounted on standard casters

| Electrical | Maximum Fuse Size | | Minimum Circuit Ampacity | | Poles (P) Wires (W) |
|--------------------|-------------------|-------|--------------------------|-------|---------------------|
| | Left | Right | Left | Right | |
| 208-230/60/1 Air | 30 | 35 | 24 | 23 | 2P 3W |
| 208-230/60/1 Water | 30 | 35 | 21 | 23 | 2P 3W |
| 208-230/60/3 Air | 20 | 20 | 16 | 15 | 3P 4W |
| 208-230/60/3 Water | 15 | 20 | 13 | 15 | 3P 4W |
| 220-240/50/1 Air | 25 | 20 | 19 | 16 | 2P 3W |
| 380-415/50/3N~ Air | 10 | 10 | 9 | 8 | 4P 5W |

This unit may be manufactured in other electrical characteristics. Refer to the local Taylor Distributor for availability. (For exact electrical information, always refer to the data label of the unit.)

Bidding Specs

Electrical: Volt _____ Hz _____ ph _____
 Neutral: Yes No Cooling: Air Water NA

Options: _____

Specifications

Electrical

Two dedicated electrical connections are required. See the Electrical chart for the proper electrical requirements. Manufactured to be permanently connected. Consult your local Taylor distributor for cord & receptacle specifications as local codes allow.

Beater Motor

Shake, 1.0 HP; Soft Serve, 1.5 HP

Refrigeration System

Shake, 11,000 BTU/hr.; Soft Serve, 9,500 BTU/hr. R404A
 Separate Hopper Refrigeration (SHR), One, 400 BTU/hr. R134a.
 (BTUs may vary depending on compressor used.)

Air Cooled

Minimum 3" (76 mm) around all sides. Install the deflector provided to prevent recirculation of warm air. Minimum air clearances must be met to assure adequate air flow for optimum performance.

Water Cooled

Water inlet and drain connections under side of base 1/2" FPT.

Options

- Cone Dispenser
- Faucet
- Refrigerated Syrup Rail, 3 compartment & Panel Spinner
- Side Mount Syrup Rail, 2 compartment

Continuing research results in steady improvements; therefore, these specifications are subject to change without notice.



Taylor Company,
 A Division of Carrier Commercial Refrigeration, Inc.
 Rockton, Illinois 61072
 815-624-8333 800-255-0626 Fax 815-624-8000
 www.taylor-company.com

Packaging - Processing
Bid on Equipment
 1-847-683-7720
 www.bid-on-equipment.com