

62

Shake Freezer

Four Flavor

Features

Offer four separate shake flavors: chocolate, strawberry, vanilla (unflavored shake mix) and an optional flavor.

Freezing Cylinder

One, 7 quart (6.6 liter).

Mix Hopper

One, 20 quart (18.9 liter). Separate hopper refrigeration (SHR) maintains mix below 41°F (5°C).

Indicator Lights

Add Mix light alerts the operator to add mix. When the Mix Out light flashes, the unit automatically shuts down to prevent damage.

Accurate Consistency Control

Torque control precisely maintains superior shake quality in texture, viscosity, and taste.

Shake Syrup System

Shake flavors are selected from push buttons. Three, 1 gallon (3.8 liter) syrup tanks are provided. Optional air compressor or CO₂ may be used to pump syrup from the remote tanks. Use only single strength syrup, free from pulp and seeds. Syrup tanks must be located within 5 feet (1.5 m) of the freezer.

Automatic Dispensing

Press the desired flavor and raise the draw handle. Frozen shake mix and syrup automatically blends to dispense the chosen flavor. After the shake is drawn, press the Rinse button to eliminate flavor carryover. Rinse water connection under unit is 3/8" FPT.



Standard 6



LISTED
SA2650



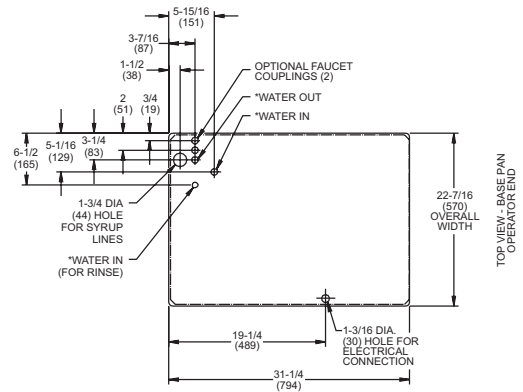
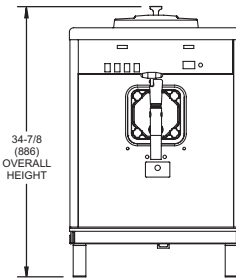
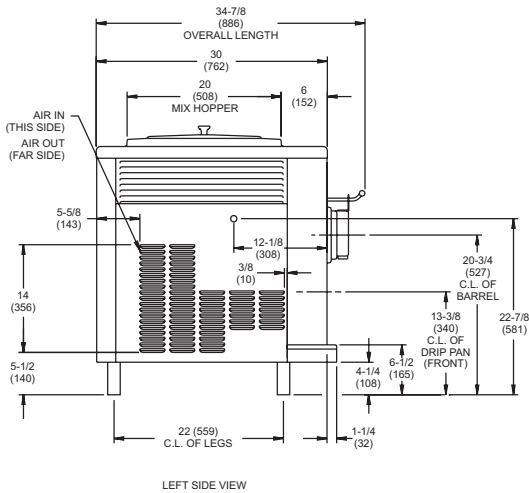
Selected 50
Hz. Models

Rockton, Illinois 61072
800-255-0626
 Phone 815-624-8333 Fax 815-624-8000
www.taylor-company.com
 e-mail: info@taylor-company.com

International Office
 Taylor Company S.r.l.
 Roma, Italy
 Tel: **+39-06-420-12002** Fax: +39-06-420-12034
 e-mail: romeoff@taylor-company.com

Packaging - Processing
Bid on Equipment
 1-847-683-7720
www.bid-on-equipment.com

62 Shake Freezer



NOTES:

- FIGURES IN PARENTHESES INDICATE MILLIMETERS.
- *NOTES FOR WATER COOLED UNITS ONLY.

Weights	lbs.	kgs.
Net	346	157.0
Crated	439	199.1
	cu. ft.	cu. m.
Volume	29.9	0.85

Dimensions	in.	mm.
Width	22-7/16	570
Depth	31-1/4	794
Height	34-7/8	886
Counter Clearance	4-1/4	108

*Mounted on standard legs

Electrical	Maximum Fuse Size	Minimum Circuit Ampacity	Poles (P) Wires (W)
208-230/60/1 Air	30	21	2P 3W
208-230/60/1 Water	30	21	2P 3W
208-230/60/3 Air	15	14	3P 4W
208-230/60/3 Water	15	14	3P 4W
220-240/50/1 Air	20	15	2P 3W
380-415/50/3~ Air	10	8	4P 5W

This unit may be manufactured in other electrical characteristics. Refer to the local Taylor Distributor or availability. (For exact electrical information, always refer to the data label of the unit.)

Bidding Specs

Electrical: Volt _____ Hz _____ ph _____
 Neutral: Yes No Cooling: Air Water NA

Options: _____

Specifications

Electrical

One dedicated electrical connection is required. See the Electrical chart for the proper electrical requirements. Manufactured to be permanently connected. Consult your local Taylor distributor for cord & receptacle specifications as local codes allow.

Beater Motor

One, 1.0 HP

Refrigeration System

One, 11,000 BTU/hr. R404A.
 Separate Hopper Refrigeration (SHR), One, 400 BTU/hr. R134a. (BTUs may vary depending on compressor used.)

Air Cooled

Minimum Clearance: 6" (152 mm) on both sides. It is recommended to place the rear of the unit against the wall to prevent recirculation of warm air. Minimum air clearances must be met to assure adequate air flow for optimum performance.

Water Cooled

Water inlet and drain connections under side of base 3/8" FPT.

Options

- Air Compressor
- Faucet

Continuing research results in steady improvements; therefore, these specifications are subject to change without notice.



Taylor Company,
 A Division of Carrier Commercial Refrigeration, Inc.
 Rockton, Illinois 61072
 815-624-8333 800-255-0626 Fax 815-624-8000
 www.taylor-company.com

Packaging - Processing
Bid on Equipment
 1-847-683-7720
 www.bid-on-equipment.com