

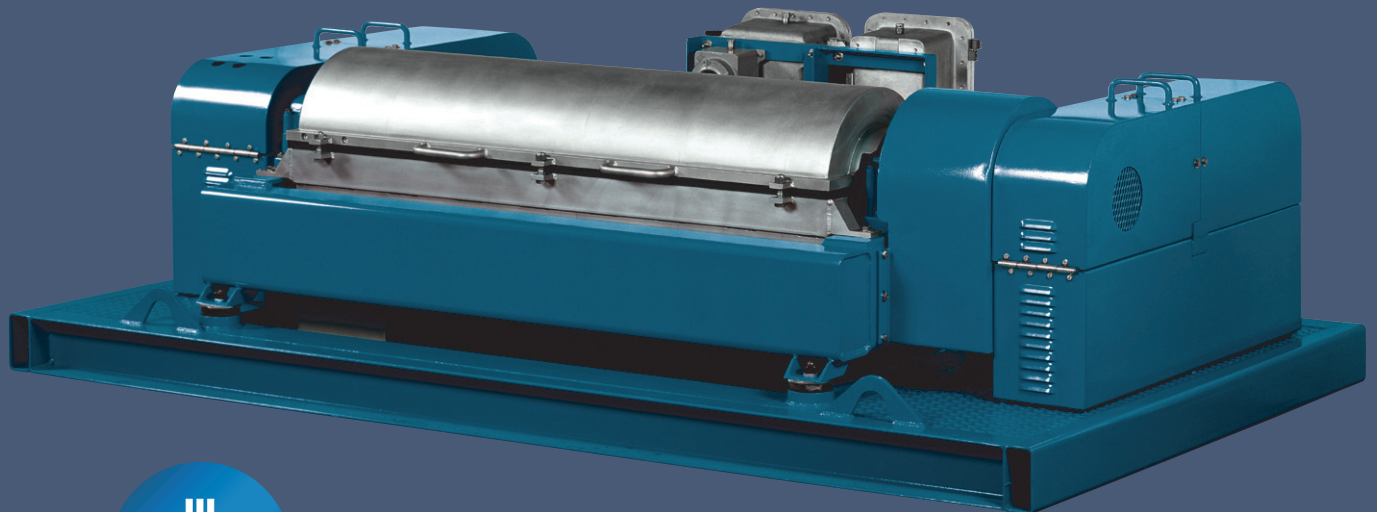
SWECO®

414 & 518 CENTRIFUGES

HIGH SPEED, HIGH VOLUME LIQUID/SOLID SEPARATION

The Sweco® 414 and 518 Centrifuges are the premier high-speed, decanting centrifuges for fluids cleaning and solids removal and product recovery applications. Ruggedly built for industrial service, they are especially effective in environmentally sensitive areas. They deliver high recovery rates and efficient solids separation to significantly reduce disposal costs or reclaim valuable material from process streams. The Sweco 414 and 518 Centrifuges are precision-balanced for smooth operation over long periods at high RPM speeds, generating extremely high G-forces.

The decanting centrifuge line is one of the focal points for the industrial treatment services now available through Sweco. The primary industries where industrial treatment services participate include (but are not limited to) Energy (Power Plants), Pulp & Paper, Agriculture, Refineries, Municipalities, Chemical, Food & Beverage, Waste Oil and Mining.



**Skid Mounted
Low Profile Design
Minimizes Space
Requirements**

We Put Technology In Motion™
www.sweco.com

Sweco Headquarters, P.O. Box 1509, 8029 U.S. Highway 25, Florence, KY 41022-1509: +1 (859) 371.4360 Fax: +1(859) 283.8469
Sweco Europe S.A., Rue de la Recherche, 8, Parc Industriel Sud-Zone I, B-1400 Nivelles, Belgium: +32.67.893434 Fax: +32.67.214368
Sweco Asia, 63 Hillview Ave. #03-02, Lam Soon Industrial Building, Singapore 669569:+65.6762.1167 Fax: +65.6762.1313

Long Service Life Low Maintenance Cost!

How It Works

The heart of a Sweco Centrifuge is its high-speed, precision-balanced rotating stainless steel bowl. Inside the bowl, a double lead spiral screw conveyor rotates in the same direction as the bowl but at a slightly slower RPM.

Feed slurry enters through a hollow axle at the narrow end and is distributed to the bowl. Centrifugal force as high as 712 G's at 1,900 RPM (or 2,149 G's at 3,300 RPM) holds the slurry against the bowl wall in a "pool". Trapped particles settle and spread against the bowl wall where they are scraped and conveyed to the solids under-flow discharge ports by the tungsten carbide-tipped scroll flights. Particles exit damp, but with no free liquid. The liquid phase exits through the non-plugging stainless steel and tungsten carbide hardfaced discharge ports. The Sweco 414 and 518 Centrifuges have the flexibility to adapt to almost any solids separation application and is ideal for environmentally sensitive areas.

Specifications

Bowl Size	in (mm)	14 x 34 (356 x 864)
Length	in (mm)	95.4 (2,423)
Width	in (mm)	70 (1,778)
Height	in (mm)	34.1 (866)
Weight	lb (kg)	4,040 (1,832)
Drive hp	Main (Back)	25 (7.5)

Bowl Size	in (mm)	14 x 56 (356 x 1,420)
Length	in (mm)	119 (3,023)
Width	in (mm)	70 (1,778)
Height	in (mm)	34.1 (866)
Weight	lb (kg)	4,800 (2,177)
Drive hp	Main (Back)	25 (7.5)

Bowl Speed	RPMs	1,600	1,900	2,500	3,300
Volume	gpm (lpm)	100 (378)	100 (378)	70 (265)	40 (151)
Cut Point (D90 Range)	Microns	12 to 14	12 to 14	9 to 12	6 to 10

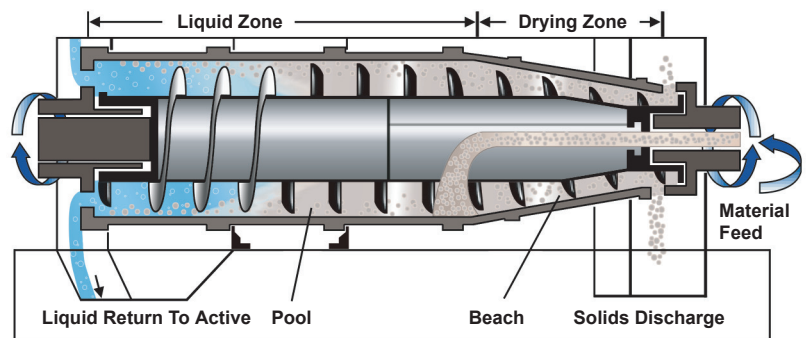
414

Bowl Speed	RPMs	1,900	2,500	3,300
Volume	gpm (lpm)	150 (568)	150 (568)	75 (284)
Cut Point (D90 Range)	Microns	6 to 9	4 to 7	2 to 3

518

Superior Features

- All stainless steel rotating assembly and coffin (case / cover)
- Rugged construction and corrosion-resistant materials provide long service life and low maintenance costs in the toughest environments
- Standard with multiple speed bowl - variable speed controls available
- Back drive speed adjustable from -18 to +85 RPMs
- Three-port feed tube to reduce high fluid velocity from entering feed chamber, reducing damage to delicate solids
- Units available with fully variable speed packages for the main and back drives
- Available with 50 hp main drive, 20 hp back drive and axial flow for higher solid and liquid throughput
- Engineered and manufactured under ISO 9001 quality system
- Tungsten carbide scroll points provide a finer layer of conveyed solids for consistent, uniform separation and maximum solids removal efficiency



We Put Technology In Motion™
 e-mail: info@sweco.com