

STOKES VACUUM

Packaging - Processing
Bid on Equipment
1-847-683-7720
www.bid-on-equipment.com

ROTARY DRYERS CONICAL DRYERS

VACUUM ROTARY DRYERS STANDARD FEATURES:

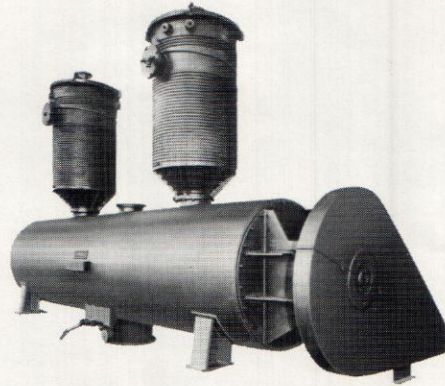
- Type 304 stainless steel for all material-contact surfaces.
- Welding done by A.S.M.E. Code-Certified welders. All internal welds ground smooth and flush.
- Double chevron-type packing, with a split lantern ring.
- Anti-friction, self-aligning roller bearings.
- Rotary joints on agitator for introduction of heating medium.
- Dust-tight chain guard and discharge shroud.
- Single speed chain and sprocket drive.
- Vacuum break valve and dial type vacuum gauge.
- Flush type clean-out ports in end heads.
- Discharge valve countoured to radius of shell to eliminate pockets.
- Completely assembled and vacuum tested with the agitator revolving before delivery, to ensure proper vacuum conditions in operation.

OPTIONAL FEATURES:

- Material-contact surfaces fabricated of any weldable metal.
- Polished internal surfaces for sterility requirements.
- Spring-loaded scraper blades.
- Variable speed drives.
- Double mechanical seals in place of chevron type packing.
- Pneumatically-operated charge and discharge valves.
- Thermowells, temperature recorders and controllers.
- Inverted bag-type dust filters.

CONICAL VACUUM DRYERS STANDARD FEATURES:

- Double-sealed vacuum line; inboard dust seal, outboard packed stuffing box.
- Quick, convenient loading/unloading. Large flanged port for loading. Smaller flanged unloading port equipped with self-wiping, vacuum-tight valve with seals available for operating temperatures to 500° F.
- Entire shell, except ported cone openings, is jacketed for uniform heat transfer to all surfaces of the shell.
- Heating media supply and return through a rotary point.
- Can be fabricated of any weldable metals.
- Mass spectrometer leak tested in our plant to ensure reliable performance in your plant.
- Carbon steel jackets serviceable to over 500° F service on smaller models. Stainless steel jacket or special closure designs on larger models for high temperature service.
- Internal intake filter of pleated fiberglass surrounding a stainless steel screen core, with a stainless steel shell protecting the filter media from particle blinding.
- Exclusive "extended surface" for added heat transfer area on larger models.



Vacuum Rotary Dryers
(Table of Standard Sizes)

Model	Diameter	Length	Heating Surface	Total Volume	Overall Dimensions			Approx. Wt.
			Sq. Ft.	Cu. Ft.	Height	Width	Length	
59-1	1'3"	1'8"	9	2	4'4"	3'0"	4'4"	700 lbs.
59-10	2'0"	6'0"	40.5	20	3'4"	4'8"	11'0"	3,700 lbs.
59-35	3'0"	10'0"	110	70	5'0"	5'8"	15'7"	8,500 lbs.
59-50	3'0"	15'0"	165	106	5'2"	5'8"	20'7"	12,200 lbs.
59-125	4'0"	20'0"	314	250	7'0"	8'2"	26'0"	25,400 lbs.
59-200	5'0"	20'0"	410	398	9'0"	9'3"	27'0"	29,800 lbs.
59-250	5'0"	25'0"	518	490	9'0"	9'3"	32'0"	35,000 lbs.
59-300	5'0"	30'0"	621	588	9'0"	9'3"	37'0"	42,400 lbs.

ROTARY DRYERS. . .

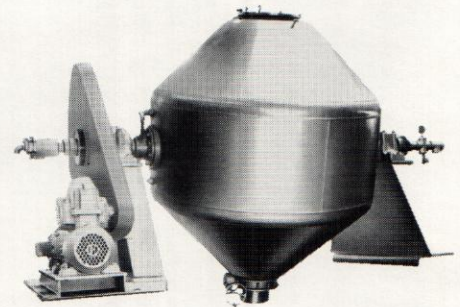
From 1 cu. ft. to 300 cu. ft. working capacities, offering the most versatile and efficient means of vacuum drying. Optional scraper blades make effective drying possible for the most difficult, hard-to-handle materials.

All dryers can be heated by water, steam, or oil and can be supplied with heating, condensing, vacuum and control systems.

Request Bulletin 59.

OPTIONAL FEATURES:

- Polished internal process contact surfaces.
- Insulated and sheathed jacket exterior.
- Variable speed motor drive.
- Internal thermowell for measuring product temperatures and/or internal gas feed tube for inert gas purging.
- Air operated discharge valve.
- Electric brake in motor-drive assembly for precise charge/discharge positioning.



Standard Sizes

Stokes Conical Rotating Vacuum Dryers are available in eleven standard sizes. Special sizes built to order.

Product Code No.	Working Capacity Cu. Ft.	Total Volume Cu. Ft.	H.P.	Dimensions								Total Weight Empty	N R.P.M.
				A	B	C	D	E	F	G	H		
159-1	3	4.6	1/2	82	39	59	23	24	12	6	16	1600	6
159-2	10	15.4	3/4	98	50	80	30	36	14	8	18	2000	6
159-3	25	38.5	2	124	70	97	39	48	16	8	19	4000	6
159-7	50	77	5	132	85	106	51	60	16	8	19	4500	6
159-4	75	115	7 1/2	144	95	117	52	72	16	10	21	6000	6
159-5	100	154	10	180	110	130	61	78	18	12	21	8500	6
159-6	150	230	15	195	108	140	68	90	18	12	21	12000	6
159-8	250	370	10	226	126	150	84	101	18	12	—	20000	3
159-9	325	490	10	238	140	162	90	114	18	12	—	22000	3
159-10	400	565	15	245	152	173	91	120	18	12	—	24000	2

From 3 cu. ft. to 575 cu. ft. working capacity for vacuum drying of crystalline or pelletized materials and those which have to be dried without excessive attrition. Patented "Plus Surface" design for PET solid staving.

Request Bulletin 159.