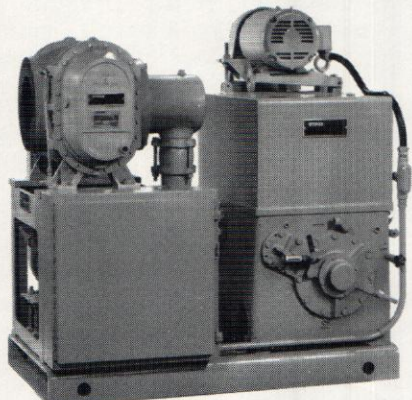


STOKES VACUUM

Packaging - Processing
Bid on Equipment

1-847-683-7720
www.bid-on-equipment.com

MULTI-STAGE High Capacity Vacuum Pumps



Cost Effective Vacuum Systems designed to improve production.

FEATURES

- **Low ultimate blank-off** — down to 0.1 micron Hg.
- **High efficiency** — (80% or better) even in the low-micron range.
- **Uniformly high pumping speed** — throughout the broad range of 500 to 10 microns.
- **Automatic Operation** — from atmospheric pressure to blank-off . . . with simplified adjustments and manual controls for special conditions.
- **Unique oil purification system** — reduces particulate contamination.
- **Simple design** — eliminating complex bypass arrangements and cumbersome auxiliary equipment.
- **Rugged Construction** — machined cast-iron casting.
- **Controlled balancing** — for minimal vibration.
- **Low, simplified maintenance** — fewer moving parts and less-frequent oil changes than with other types of pumps . . . no special tools for routine maintenance.

Specifications for Stokes® Series 1700 Mechanical Booster Pumps

Specifications		HC and HCS models provide for faster pumpdown capability.								
Model No.	1st Stage Blower	1736	1736-S	1721	1721-S	1722	1722-S	1722-HC	1722-HCS	
		cfm	612	850	1300	1600	1300	1600	1300	1600
Displacement	Microvac® Pump	m³/hr	1040	1444	2209	2719	2209	2718	2209	2718
		cfm	150	150	150	150	300	300	600	600
Normal Cut-in Pressure	Torr	25	10	15	10	25	15	75	60	
		hp	3	3	3	2	15	8	25	20
Pressure Limit for Continuous Operation	Torr	8	3	3	2	15	8	25	20	
		hp	3	3	3	2	15	8	25	20
Drive	1st Stage	kw	2.24	2.24	5.60	7.46	5.60	7.46	5.60	7.46
		hp	—	—	—	—	—	—	—	—
	2nd Stage	kw	—	—	—	—	—	—	—	—
		hp	—	—	—	—	—	—	—	—
	Forepump	hp	7½	7½	7½	7½	10	10	two @ 10	two @ 10
		kw	5.60	5.60	5.60	5.60	7.46	7.46	14.91 total	14.91 total
Connections	Suction Flange	in.	6	6	8	8	8	8	8	
		mm	152	152	203	203	203	203	203	
	Discharge	in.	2 IPS	2 IPS	2 IPS	2 IPS	3 IPS	3 IPS	3 IPS (2)	3 IPS (2)
		mm	—	—	—	—	—	—	—	—
Water Requirements	1st Stage	gpm	—	—	—	—	—	—	—	
		lpm	—	—	—	—	—	—	—	
	2nd Stage	gpm	—	—	—	—	—	—	—	
		lpm	—	—	—	—	—	—	—	
	Forepump	gpm	1½	1½	1	1	2	2	4	4
		lpm	5.68	5.68	3.785	3.785	7.57	7.57	15.14	15.14
Oil Requirements	1st Stage	gal	1	1	.625	.625	.625	.625	.625	
		liter	3.785	3.785	2.366	2.366	2.366	2.366	2.366	
	2nd Stage	gal	—	—	—	—	—	—	—	
		liter	—	—	—	—	—	—	—	
	Forepump	gal	3	3	3	3	12	12	24	24
		liter	11.36	11.36	11.36	11.36	45.53	45.53	90.85	90.85
Height	Overall	in.	47½	47½	49½	49½	56½	56½	56½	59½
		mm	1216	1216	1260	1260	1438	1438	1438	1513
	To Inlet	in.	47½	47½	40¾	40¾	40¾	40¾	40¾	40¾
		mm	1216	1216	1035	1035	1035	1035	1035	1035
Length	in.	53½	53½	55½	55½	55½	55½	70	70	
	mm	1359	1359	1419	1419	1407	1407	1803	1778	
Width	in.	27¾	27¾	36¾	36¾	41¼	41¼	70¾	70¾	
	mm	705	705	919	919	1048	1048	1794	1794	
Weight	Net	lb	1775	1775	2700	2800	3500	3600	5300	5400
		kg	805	805	1225	1270	1588	1633	2404	2450

Electrical requirements: Full NEMA 12 controls supplied as standard on all models. 460v/60Hz/3hp power with transformer and 115v control circuits are standard.

EXCLUSIVE 2-YEAR WARRANTY

DETAILS UPON
REQUEST

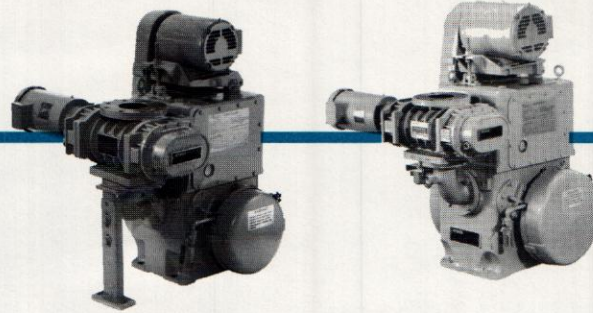
Specifications		S models are high-speed units.											
Model No.	1st Stage Blower	1738	1724	1724-HC	1723	1723-HC	1723-HCS	1725	1726	1719	1720	1729*	
		cfm	2000	2875	2875	3940	3940	4360	5740	5740	7880	7880	13,950
Displacement	Microvac® Pump	m³/hr	3398	4885	4885	6695	6695	7409	9753	9753	13,390	23,704	
		cfm	300	300	600	300	600	730	600	730	600	730	
Normal Cut-in Pressure	Torr	10	15	30	10	25	30	10	15	10	15	1st Stg 2.0 2nd Stg 25.0	
		hp	3	1.0	3	0.8	1.0	2.5	1.2	1.3	1.0	1.1	0.45
Drive	1st Stage	kw	7.46	14.91	18.64	18.64	22.37	22.37	22.37	22.37	29.83	29.83	37.29
		hp	—	—	—	—	—	—	—	—	—	—	7½
	2nd Stage	kw	—	—	—	—	—	—	—	—	—	—	5.60
		hp	—	—	—	—	—	—	—	—	—	—	—
	Forepump	hp	10	10	two @ 10	10	two @ 10	30	two @ 10	30	two @ 10	30	10
		kw	7.46	7.46	14.91 total	7.46	14.91 total	22.37	14.91 total	22.37	14.91 total	22.37	7.46
Connections	Suction Flange	in.	8	8	8	10	10	10	12	14	14	18	
		mm	203	203	203	254	254	254	305	305	356	457	
	Discharge	in.	3 IPS	3 IPS	3 IPS (2)	3 IPS	3 IPS	5 IPS	3 IPS (2)	5 Flg	3 IPS (2)	5 Flg	3 IPS
		mm	—	—	—	—	—	—	—	127	—	127	—
Water Requirements	1st Stage	gpm	—	2	2	2	2	2	2	2½	2½	3	
		lpm	—	7.57	7.57	7.57	7.57	7.57	7.57	7.57	9.46	9.46	11.35
	2nd Stage	gpm	—	—	—	—	—	—	—	—	—	—	Air Cooled
		lpm	—	—	—	—	—	—	—	—	—	—	—
	Forepump	gpm	2	2	2	2	2	4	5	4	5	2	
		lpm	7.57	7.57	7.57	7.57	7.57	15.14	15.14	15.14	18.93	7.57	
Oil Requirements	1st Stage	gal	.625	5¼	.625	5¼	5¼	5¼	5¼	7¾	7¾	15	
		liter	2.366	19.87	2.366	19.87	19.87	19.87	19.87	29.34	29.34	56.78	
	2nd Stage	gal	—	—	—	—	—	—	—	—	—	½	
		liter	—	—	—	—	—	—	—	—	—	1.9	
	Forepump	gal	12	12	24	12	24	20	24	20	24	20	12
		liter	45.53	45.53	90.85	45.43	90.85	75.71	90.85	75.71	90.85	75.71	45.43
Height	Overall	in.	56¾	66¾	67	66¾	67	66¾	66¾	77¼	77¼	78	
		mm	1438	1696	1702	1696	1702	1702	1696	1696	1959	1959	1981
	To Inlet	in.	40¾	50	50	50	50	50	50	59¾	59¾	46¾	
		mm	1035	1270	1270	1270	1270	1270	1270	1508	1508	1184	
Length	in.	55¾	71¾	70	71¾	80	94¾	91	98¾	101¾	109¾	128¾	
	mm	1407	1813	2032	1813	2032	2403	2311	2499	2575	2788	3273	
Width	in.	41¼	47½	70	49¼	70	52	70	60¾	69¾	63¾	122¾	
	mm	1048	1207	1778	1251	1778	1321	1778	1535	1767	1621	3108	
Weight	Net	lb	3600	5250	7300	5400	7450	9200	7900	9600	9200	10,900	13,300
		kg	1633	2381	3311	2450	3379	4173	3583	4354	4173	4944	6033

*Displacement of 2nd stage blower is 1300 cfm (2209 M³HR.)

Other electrical arrangements optional. Dimensions are subject to minor changes; confirm before construction.

Packaging - Processing Bid on Equipment

1-847-683-7720
www.bid-on-equipment.com



Specifications for Stokes® Series MB Booster Pumps

Specifications		Two-Stage Mechanical Vacuum Pumps with Dry First Stage												
Model Number		146MB	146MBX	148MB	148MBX	149MB	149MBX	149MBHC	212MB	212MBX	412MB	412MBX	612MB	
First Stage Displacement	cfm	125	245	125	245	125	245	400	245	400	400	612	612	
	m ³ /hr.	212	416	212	416	212	416	680	416	680	680	1040	1040	
Second Stage Displacement	cfm	30	30	50	50	80	80	80	150	150	300	300	300*	
	m ³ /hr	50	50	85	85	135	135	135	255	255	510	510	510	
First Stage Direct Drive	hp	1.5	2.0	1.5	2.0	1.5	2.0	2.0	2.0	2.0	2.0	20	20.0	
	kw	1.3	1.8	1.3	1.8	1.3	1.8	1.8	1.8	1.8	1.8	14.9	14.9	
Second Stage Belt Drive	hp	1.5	1.5	2.0	2.0	3.0	3.0	3.0	7.5	7.5	10.0	10.0	—	
	kw	1.3	1.3	1.8	1.8	2.2	2.2	2.2	5.6	5.6	7.5	7.5	—	
Operation from Atmosphere without Pressure Switch		No	No	No	No	Yes	No	No	Yes	No	Yes	Yes	Yes	
Blower Cut-In Pressure (Torr)		100	10	300	30	760	70	20	760	55	760	760	760	
Pressure Limit for Continuous Operation		20	3	20	10		40	10		35				
Inlet Connection ASA Flange	in.	3	3	3	3	3	3	4	3	4	4	6	6	
	mm	76	76	76	76	76	76	102	76	102	102	152	152	
Exhaust Connection NPT	in.	1.25	1.25	1.5	1.5	1.5	1.5	1.5	2.0	2.0	3.0	3.0	4.0	
	mm	32	32	38	38	38	38	38	51	51	76	76	102	
Cooling Water Consumption, Max.	gpm					1.0	1.0	1.0	1.5	1.5	2.0	2	3.0	
	lpm	Air Cooled				3.79	3.79	3.79	5.68	5.68	7.57	7.57	11.36	
Electrical Characteristics		Standard is 230/460/60/3: Direct Drive MB Pumps Deliver 5/6th cfm on 50 cycle operation												
First Stage Oil Requirements	pt	1.75	1.75	1.75	1.75	1.75	1.75	1.75	1.75	1.75	1.75	9¼	8	
	lt	0.83	0.83	0.83	0.83	0.83	0.83	0.83	0.83	0.83	0.83	4	3.8	
Second Stage Oil Requirements	gal	0.5	0.5	1.25	1.25	2.5	2.5	2.5	4.0	4.0	12	12	12	
	lt	1.9	1.9	4.7	4.7	9.5	9.5	9.5	15.1	15.1	45.4	45.4	45.4	
Height, Overall	in.	30	30	32	32	38 ⁷ / ₈	38 ⁷ / ₈	38 ⁷ / ₈	43 ¹ / ₂	43 ¹ / ₂	51 ³ / ₄	51 ³ / ₄	56 ⁷ / ₁₆	
	mm	756	756	813	813	984	984	984	1130	1130	1314	1314	1434	
Height, To Inlet	in.	28 ⁷ / ₈	28 ⁷ / ₈	27 ¹ / ₈	27 ¹ / ₈	26 ³ / ₄	26 ³ / ₄	26 ³ / ₄	29 ⁷ / ₈	30 ³ / ₈	34 ³ / ₁₆	44 ⁹ / ₁₆	56 ⁷ / ₁₆	
	mm	733	733	689	689	679	679	679	759	772	868	1132	1434	
Length	in.	29 ⁹ / ₁₆	29 ⁹ / ₁₆	29 ¹ / ₈	29 ¹ / ₈	32 ¹¹ / ₁₆	32 ¹¹ / ₁₆	32 ¹¹ / ₁₆	36 ⁷ / ₁₆	36 ⁷ / ₁₆	38 ⁵ / ₁₆	41 ¹ / ₁₆	46 ¹ / ₂	
	mm	745	745	740	740	830	830	830	926	926	973	1059	1181	
Width	in.	23 ³ / ₈	24 ¹ / ₈	23 ³ / ₈	24 ¹ / ₈	23 ¹ / ₈	24 ¹ / ₈	26 ¹ / ₈	35 ³ / ₄	36 ⁵ / ₈	40 ¹ / ₄	55 ¹ / ₁₆	40 ¹ / ₄	
	mm	587	613	587	613	587	613	664	908	930	1022	1414	1022	
Net Weight	lb.	575	575	620	620	783	783	833	1250	1300	2100	2650	3200	
	kg.	261	261	282	282	355	355	378	568	591	955	1202	1451	

*612 MB has built in bypass

Electrical characteristics: 230/460v; 60 Hz, 3hp. Direct-drive MB pumps deliver 5/6 cfm on 50-cycle operation.

Pumping Curves Available Upon Request (BULLETIN 536)