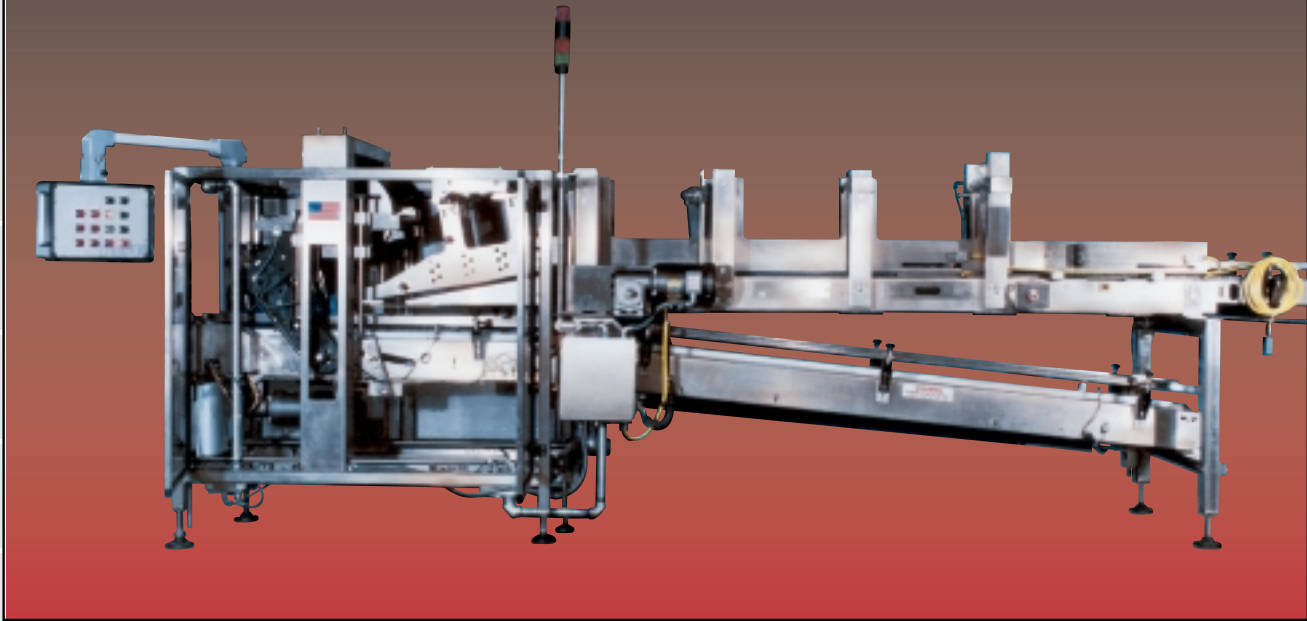


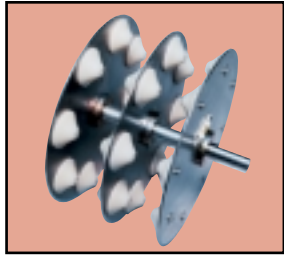
# Orbitron II Continuous Motion Packer



**StandardKnapp**  
**StandardKnapp**

an EMPLOYEE owned company

# Orbitron II Features



① Orbitron's technology advantage begins with the compact rotary product spacing wheel.



② Bottles entering the neck support assembly are gently lowered into case or tray with little or no drop.



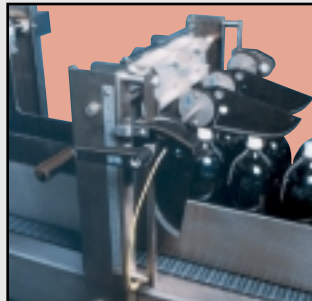
③ The case feed conveyor is power adjustable to accommodate tray height variations.



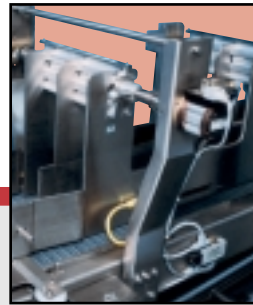
④ Positive positioning change part locators are provided with pre-set stops to allow immediate start-up and production.



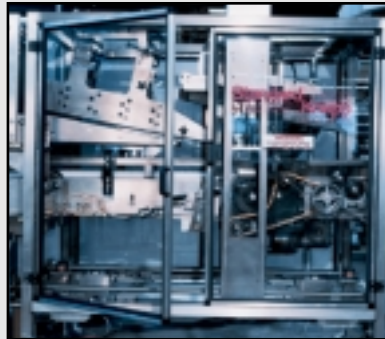
⑤ Direct drive "shear arm" assembly eliminates gearbox backlash for accurate bottle to case timing.



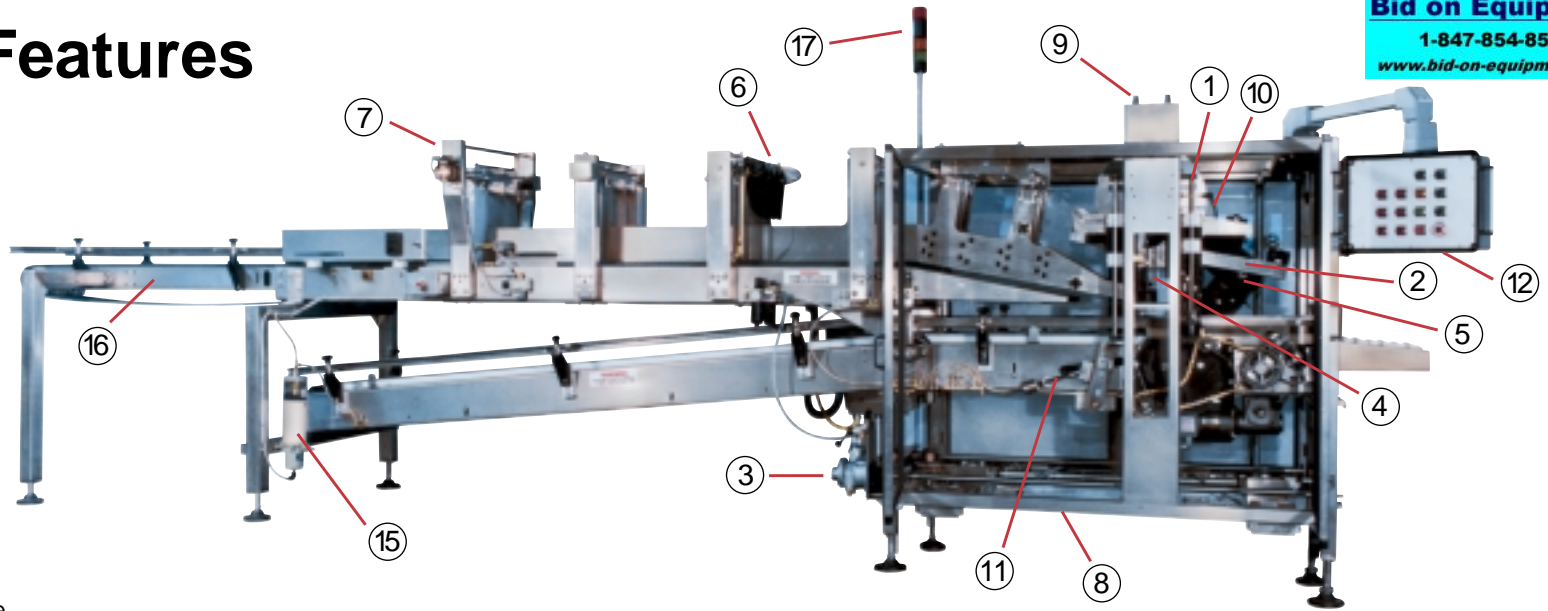
⑥ Single point adjust down product detectors protect product and machine.



⑦ Patented on-demand oscillator operates only when smooth product flow is interrupted, for continuous operation.



⑧ Compact all stainless steel frame. Full length, electrically interlocked guard doors provide quick access and complete safety.



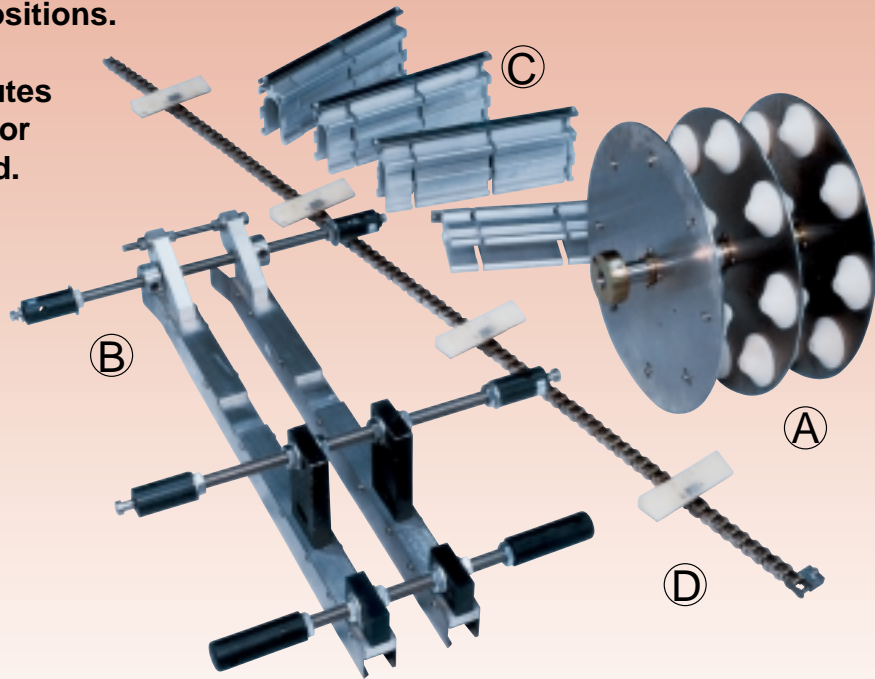
- ⑨ Screw type adjustment points for easy changeover.
- ⑩ Integral quick-adjust handles for minimum tool requirements.
- ⑪ Case lug chain take-up mounted outside frame for easy access.
- ⑫ Operator control station mounted via 180° swivel arm provides maximum convenience and safety in setup and operation. "Handless" operation.
- ⑬ Remote mounted main electrical enclosure provides flexibility of location.
- ⑭ NEMA 4x SST electrical boxes mounted on machine allow full washdown.
- ⑮ Optional automatic lubrication system reduces maintenance requirements and enhances machine longevity.
- ⑯ Five foot infeed extension for loose product sweep-off. Delete option for multipack-only applications.
- ⑰ Three color indicating beacon for quick and easy machine status.

# The Standard Knapp Advantage

## Change Parts: Compact – Lightweight – Low Cost

Change parts are “snap-in” style that lock into pre-set positive positions. Changeover is easily accomplished in 15-20 minutes with *one person*. No hoists or extra personnel are required.

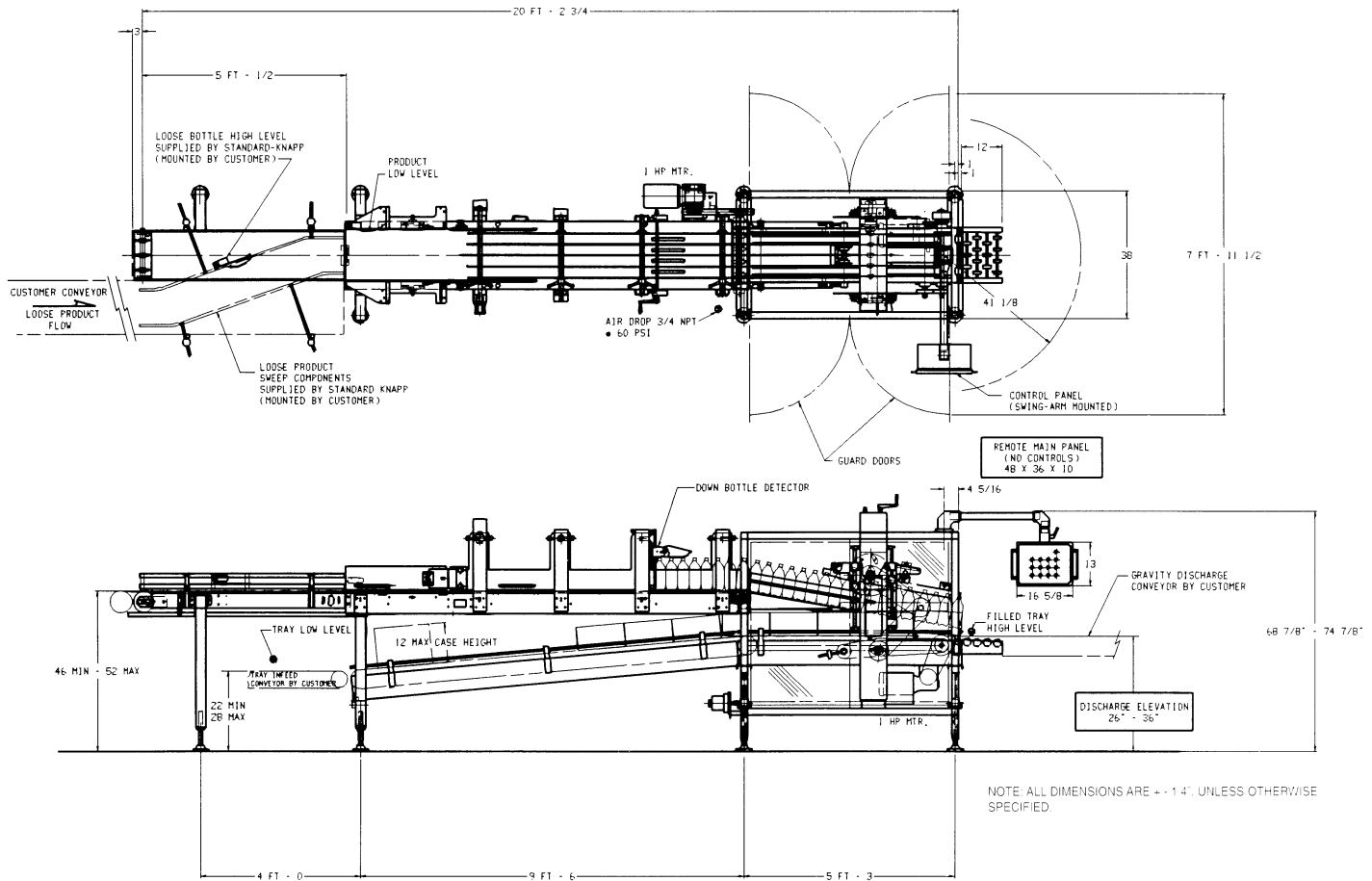
- Ⓐ Product Spacer Wheel
- Ⓑ Neck Guide Support Assembly
- Ⓒ Drop-in Lane Guide Spacers
- Ⓓ Case Timing Lug Chain



## Orbitron II Available Options

- **Overhead flight lug assembly** for non-carbonated/compressible products
- **Roller flap guides** for two-flap cases (major flaps)
- **Alternate PLC models** available to suit customer needs
- **Message display** for descriptive operational information
- **Data Table Access Module (DTAM)** provides access to programmable speeds
- **Extended powered discharge conveyor** for tall products

# Orbitron II Floor Plan



## Specifications\*

**Speed:** Up to 65 cpm†

**Trays/Cases:** Corrugated  
 Plastic  
 1/4 to full depth

**Pack Patterns:** 2 x 3, 2 x 4  
 Loose: 3 x 4, 3 x 5  
 Multipacks: 4, 6, 8, 12 packs

**Infeed:** Straight in for multipacks,  
 sweep off for loose

**Products:**

PET-Bottles: 16 oz., 20 oz.,  
 32 oz., 64 oz., 0.5 L, 1 L,  
 1.5 L, 2 L, 3 L  
 Glass: 10 oz., 12 oz., 16 oz., 20 oz.  
 carbonated and non/low  
 carbonated  
 Cans: 12 oz.

**Discharge:** Gravity roller conveyor  
 supplied by customer, adjustable  
 with case discharge height.

**Controls:** 24 vDC with A-B SLC 500

**Electric Motors:** Two 1 HP  
 motors with variable  
 frequency drives

**Machine Mounted Enclosures:**  
 NEMA 4x

**Main Control Enclosure:** NEMA 4,  
 painted steel-it

\* Specifications subject to change without notice.

† Depending on product and cases.



**STANDARD KNAPP, INC.**  
 127 Main Street, Portland, CT 06480  
**SALES PHONE:** (860) 342-1100, ext. 239  
**SALES FAX:** (860) 342-0782  
**EMAIL:** info@standard-knapp.com  
**WEB SITE:** www.standard-knapp.com