

# PakMore™



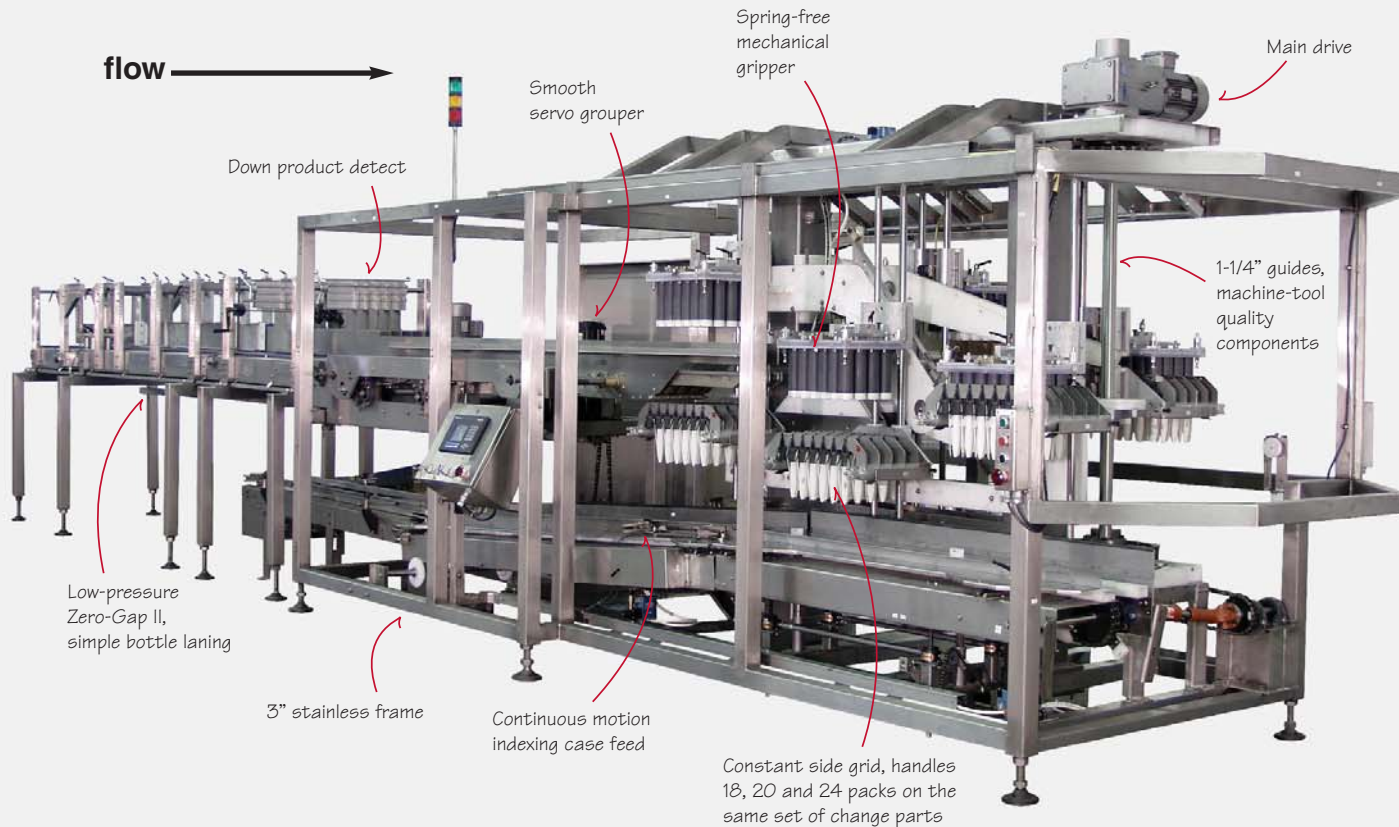
***Continuous Motion,  
Soft Placement  
Case Packer***

**StandardKnapp**  
**StandardKnapp**

an EMPLOYEE owned company

**StandardKnapp**  
**StandardKnapp**  
an EMPLOYEE owned company

# PakMore™ Continuous Motion Case Packer



## PakMore™ Benefits

- **High reliability** – designed for 24/7 operation at 50 or 75 CPM
- **Simple operation** and intuitive operator interface
- **Smart innovation** with automatic fault recovery features
- **Small footprint** with either “inline” or “peninsula” layout
- **Easy walk-by maintenance** – all components are visible and accessible
- **Flexible and adaptable** to future applications
- **Quality fit and finish** – robust stainless construction

*“The new case packer provides easier handling of the containers with less bottle breakage, less label damage and higher speed packing.”*

– A Major U.S. Beverage Distributor

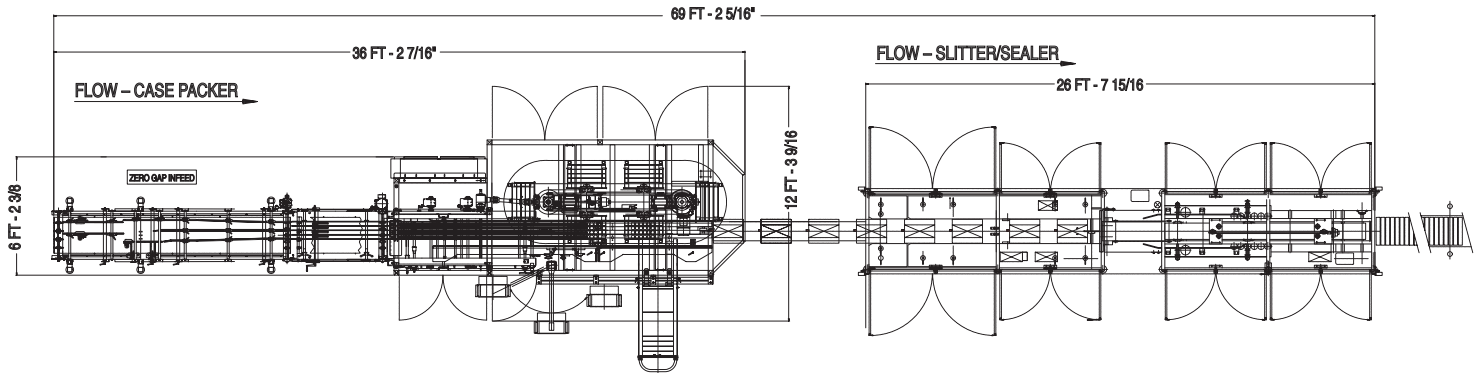


Standard-Knapp PakMore™ shown in production.

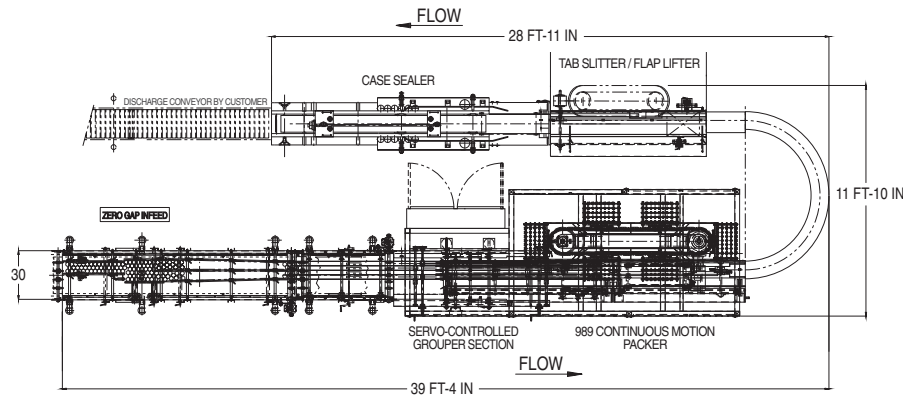
# PakMore™ Floor Plan

Inline layout shown integrated with optional tab-lock slitter/sealer

*Synchronized via servo*



## Peninsula layout, with slitter/sealer



### Specifications\*

**Model:** 989

**Speeds:** 50, 75 CPM

**Electrical Supply:** 460V

**Air Supply:** 80 psi with 3/4 NPT

**Controls:** Allen-Bradley ControlLogix

**Servo Drives:** Allen-Bradley Ultra 3000 or Kinetix 6000

**Interface:** Allen-Bradley PanelView

### Motors:

**Main Drive:** 5 HP

**Zero Gap Drive:** 2 HP

**Infeed Drive:** 1 HP

**Grouper:** Servo

\* Standard-Knapp is committed to continuous product improvement. Specifications are subject to change without notice.



### STANDARD-KNAPP, INC.

63 Pickering Street, Portland, CT 06480 U.S.A.

**SALES PHONE:** (860) 342-1100, ext. 239

**SALES FAX:** (860) 342-1557

**EMAIL:** [info@standard-knapp.com](mailto:info@standard-knapp.com)

**WEB SITE:** [www.standard-knapp.com](http://www.standard-knapp.com)