

# Versatron APT Case Packer

For non-round and difficult-shaped containers



**Standard Knapp**  
**Standard Knapp**

an EMPLOYEE owned company

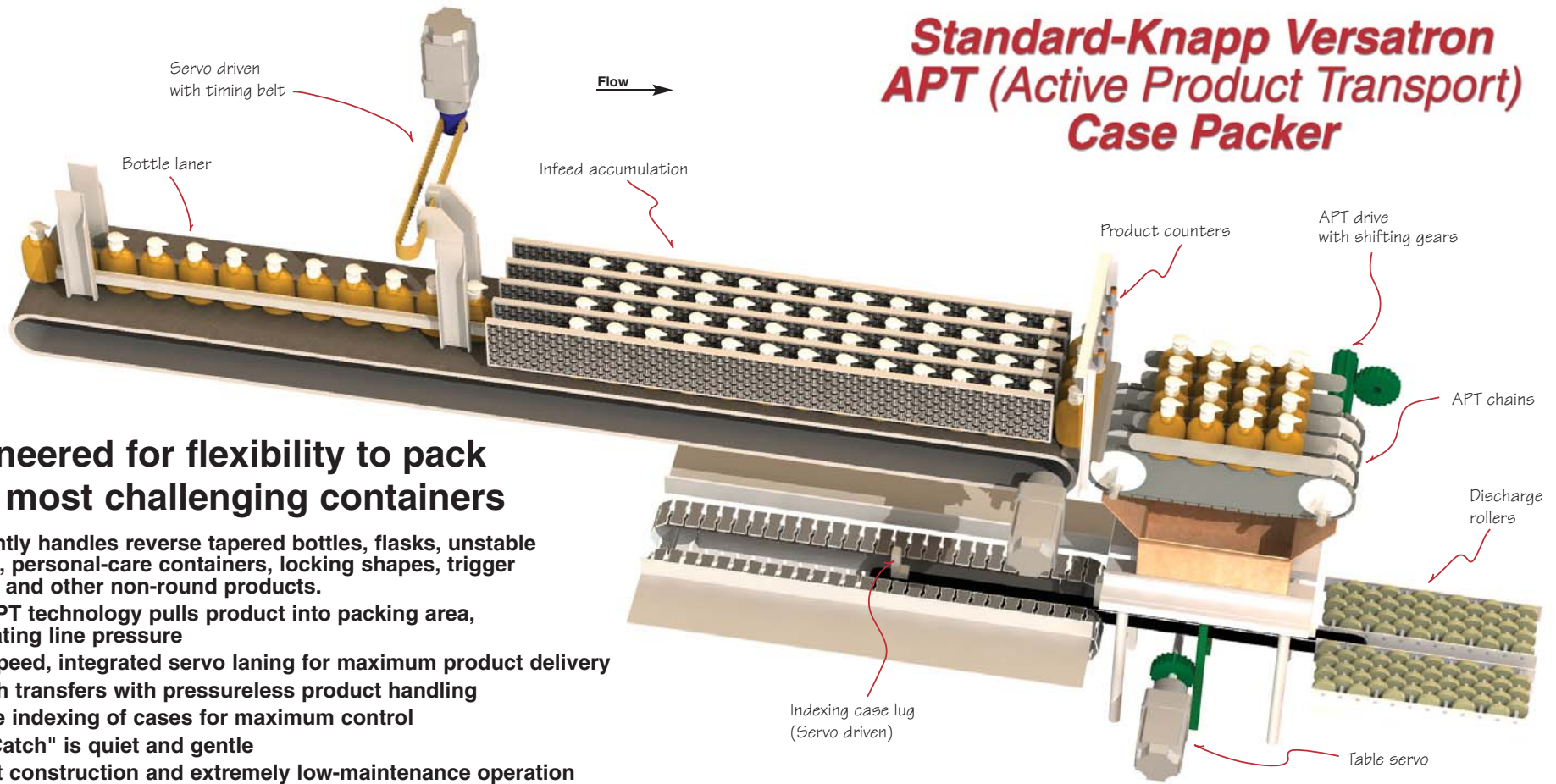
**"Making Packaging Easy"**

**Packaging - Processing**  
**Bid on Equipment**

1-847-854-8577

[www.bid-on-equipment.com](http://www.bid-on-equipment.com)

## Standard-Knapp Versatron APT (Active Product Transport) Case Packer



### Engineered for flexibility to pack your most challenging containers

- Efficiently handles reverse tapered bottles, flasks, unstable bottles, personal-care containers, locking shapes, trigger bottles and other non-round products.
- New APT technology pulls product into packing area, eliminating line pressure
- High-speed, integrated servo laning for maximum product delivery
- Smooth transfers with pressureless product handling
- Precise indexing of cases for maximum control
- "Soft Catch" is quiet and gentle
- Robust construction and extremely low-maintenance operation

Beaded lane guides offer nearly zero side friction



**Low-pressure, low-friction infeed eliminates locking or shingling**

Robust mounting prevents deflection

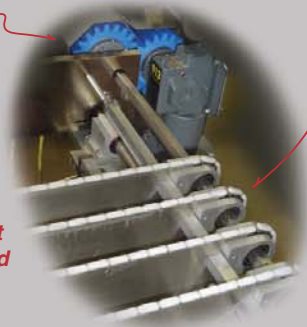
Sensors count bottles as they enter Active Product Transport



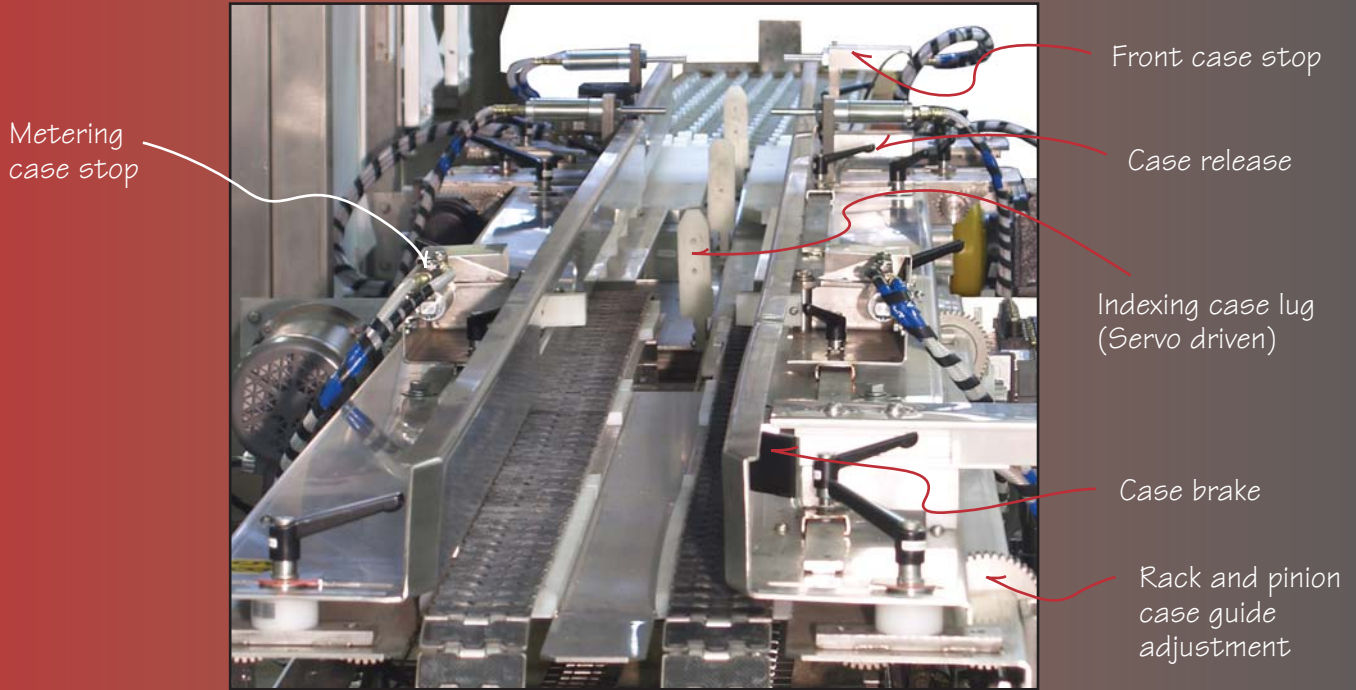
Sliding gears

**Patent Applied For**

APT chains



### Downstream view of case feed



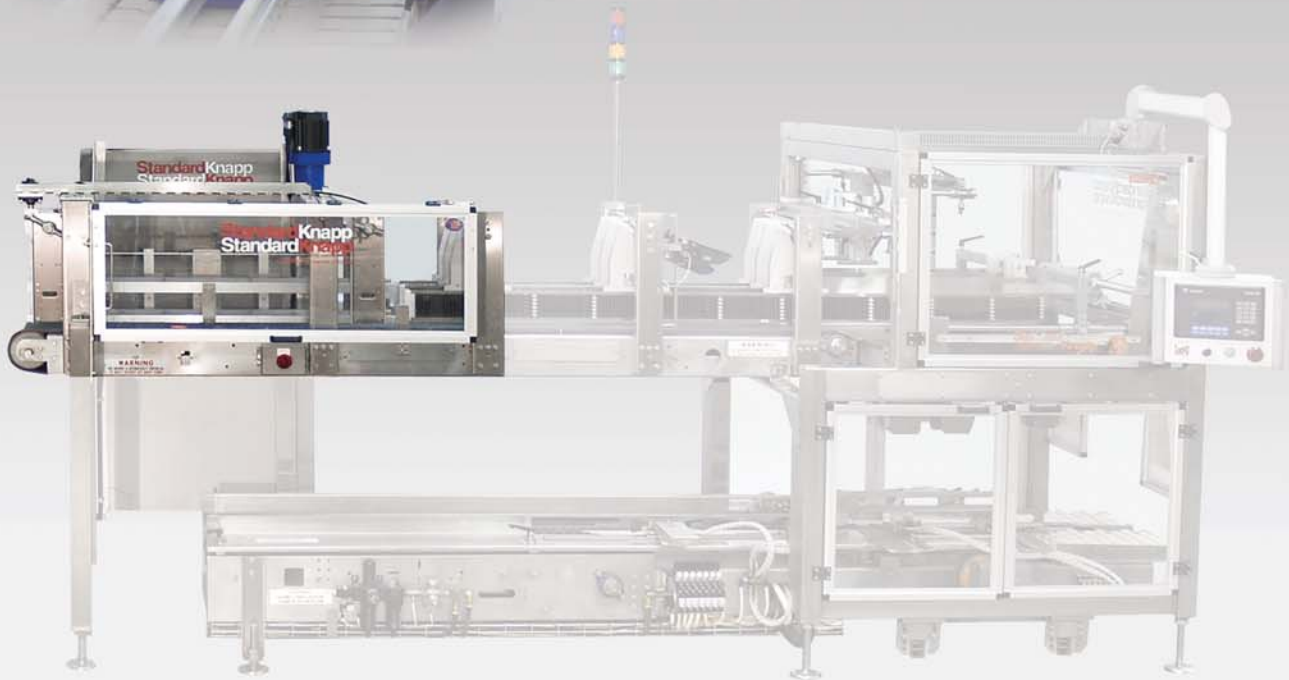
### End View of Case Table



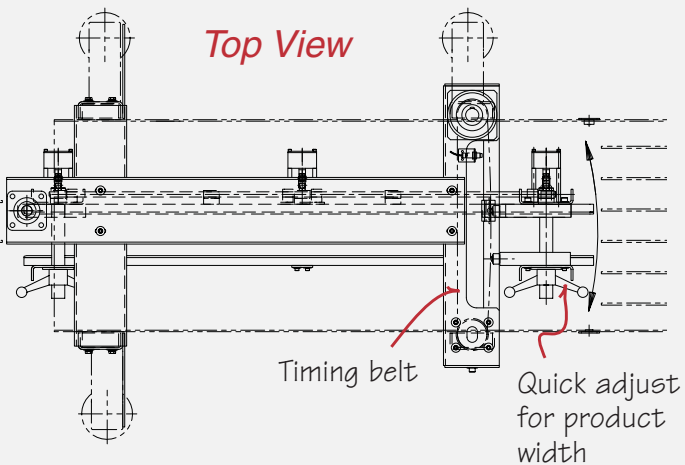
### Side View of Case Table Construction



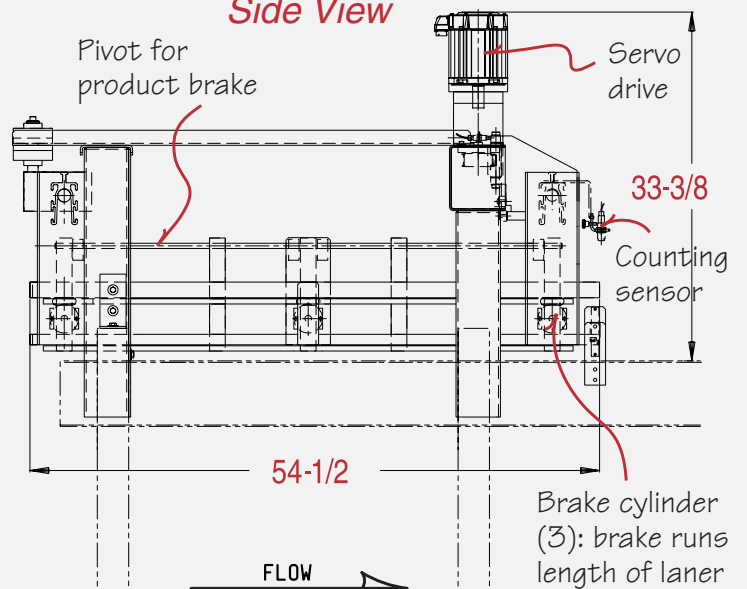
# Product Laner Section, Integrated to Packer Infeed



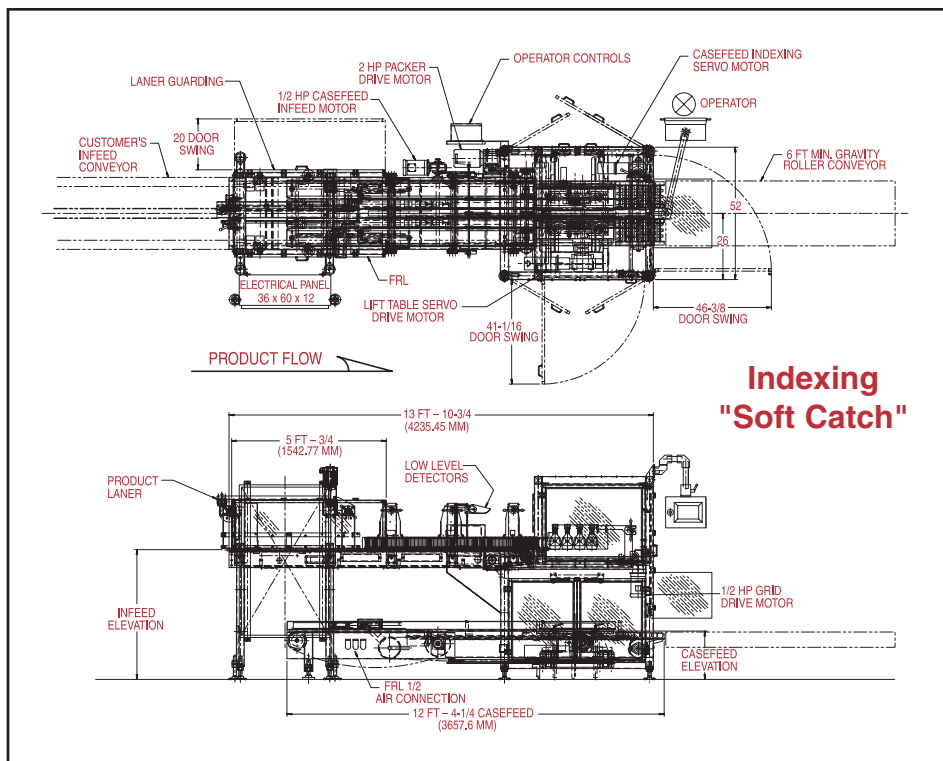
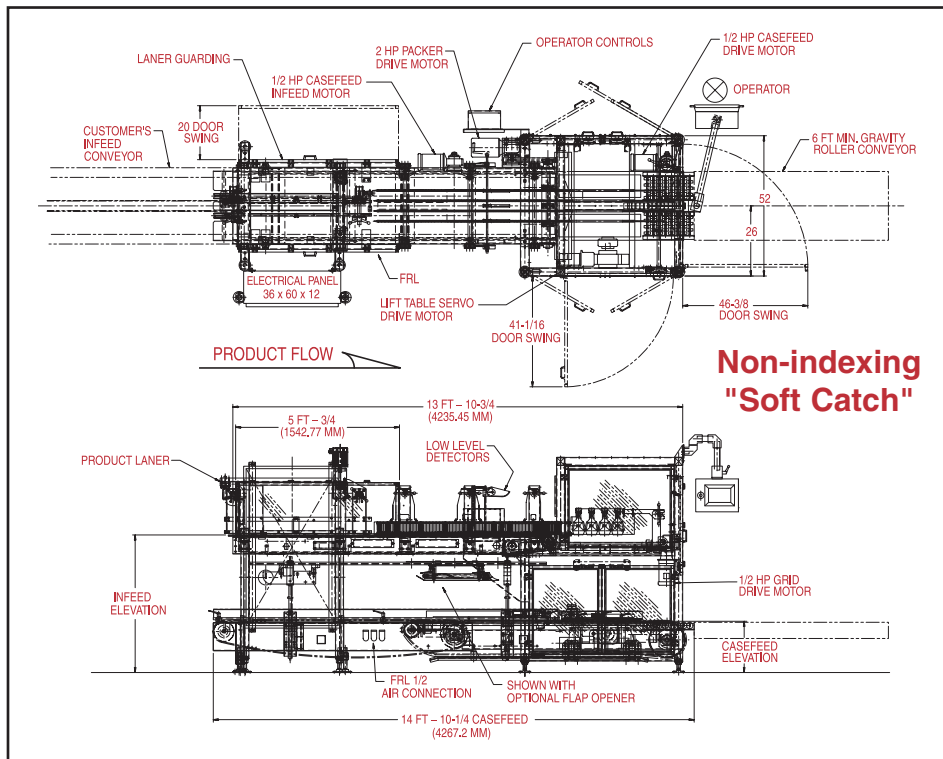
Top View



Side View



# Versatron APT Floor Plan



## Specifications\*\*

Model	939s APT Non-indexing Case Feed	939s APT Indexing Case Feed
<b>Speeds:*</b> 1 case/cycle 2-4 cases/cycle	28 cpm 40 cpm	45 cpm 75 cpm
<b>Product Types:</b>	designed for the difficult to handle products (non-round, locking shapes, unstable, or reversed tapered)	
<b>Product Materials:</b>	PET, HDPE, glass, cartons, metal cans, fiber board, etc.	
<b>Product Sizes:</b>	4 oz. to 128 oz.	
<b>Pack Patterns:</b>	1 lane up to 8 lanes	
<b>Pack Handling:</b>	loose containers or multipacks	
<b>Case Types:</b>	corrugated, HSC, RSC, tablock, tray, bliss case, partitions, basket carrier, plastic case	
<b>Machine Construction:</b>	stainless and mild steel	stainless steel
<b>Inf feed Laning:</b>	optional integrated servo laner	
<b>Product Stops:</b>	overhead brake, lift & shear, or side stop (product dependent)	
<b>Case Feed:</b>	rubber friction belt	active with indexing servo
<b>Motors:</b> inf feed casefeed case timing lift table bottle laner APT	1 HP with VFD 1 HP with VFD case feed Mosier cyl. servo drive 1 HP with VFD	1 HP with VFD 1 HP with VFD servo drive servo drive servo drive 1 HP with VFD
<b>Controls:</b>	SLC 500	ControlLogic
<b>Control Voltage:</b>	24 volts DC other quoted	
<b>Main Panel:</b>	NEMA 12 mounted to frame	
<b>Operator Interface:</b>	PanelView 550 (other quoted)	
<b>Air Required:</b>	60 psi	
<i>*Speeds in brochure are maximum speeds only and could vary depending on products and trays.</i>		

\*\* Standard-Knapp is committed to continuous product improvement. Specifications subject to change without notice.



STANDARD-KNAPP, INC.  
63 Pickering Street, Portland, CT 06480 U.S.A.  
Sales Phone: (860) 342-1100, ext. 239  
Sales Fax: (860) 342-1557  
Email: sales@standard-knapp.com  
Web Site: www.standard-knapp.com