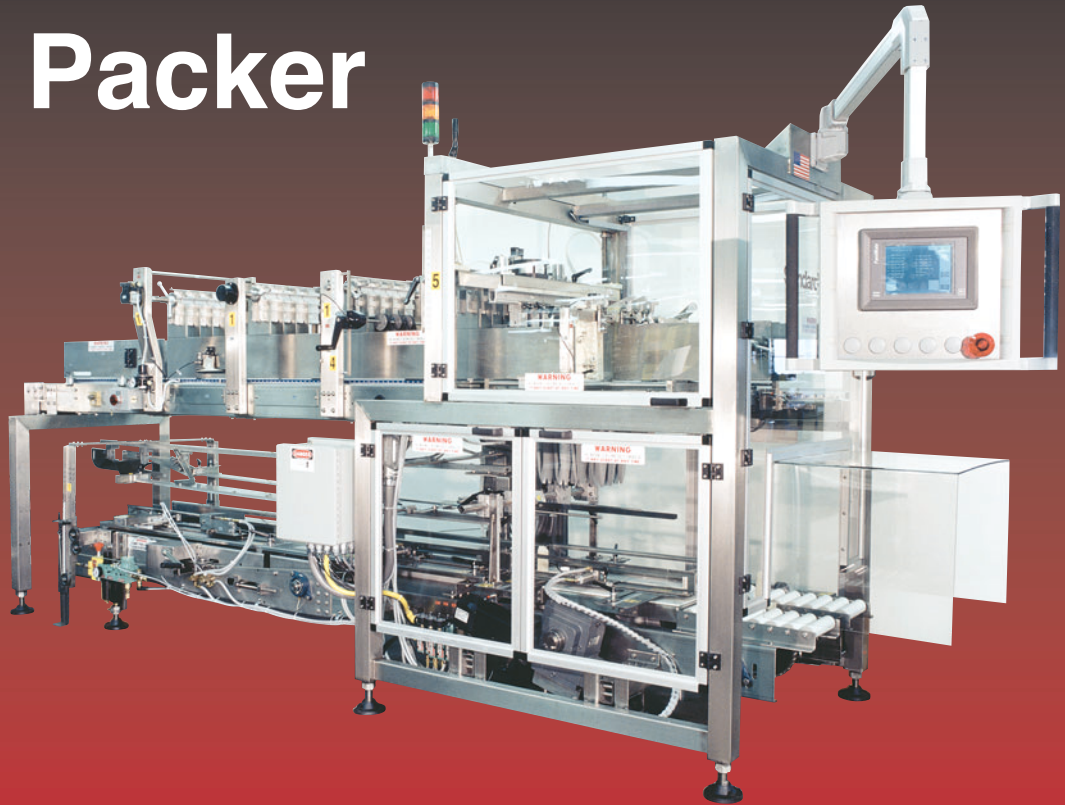


Versatron "Soft Catch" Case Packer

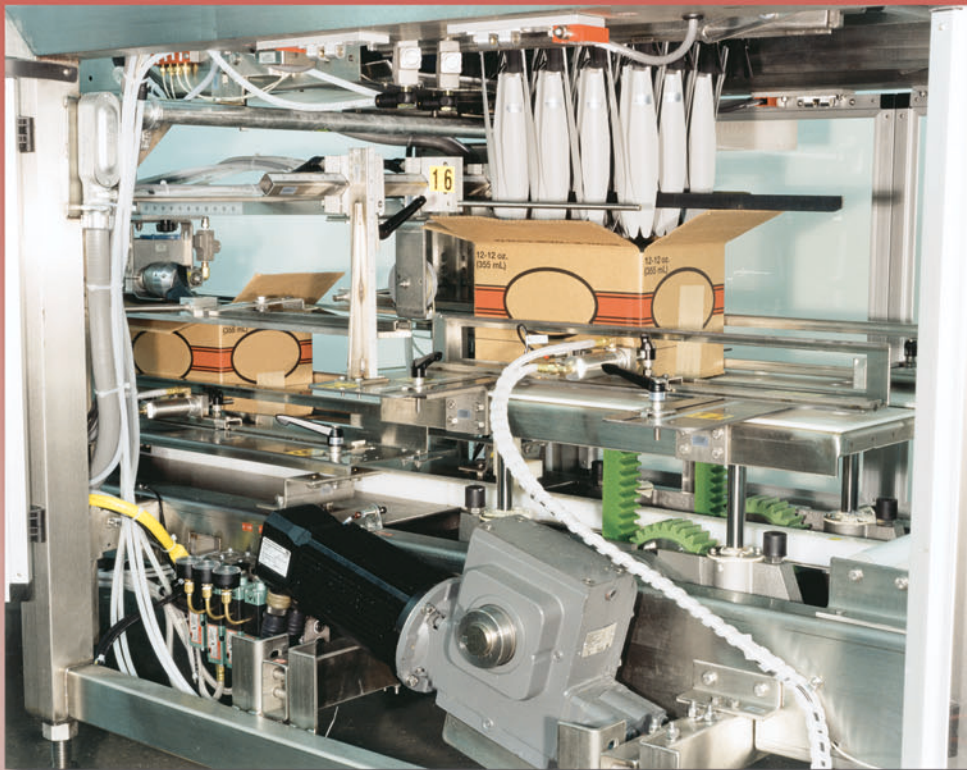


Standard Knapp
Standard Knapp

an EMPLOYEE owned company

Packaging - Processing
Bid on Equipment
1-847-854-8577
www.bid-on-equipment.com

“Soft Catch” Lift Table



A two-axis servo system allows the Versatron to actually “catch” the product while it descends into the case. The lift table moves the case to the “up” position and waits for a full grid. When grid is full, the riding strips shift to the side and initiate the bottle descent. The lift table simultaneously moves the case downward on a velocity curve that ultimately achieves the same speed at the point of contact (the “soft catch”).
See illustration below.

Other benefits include push-button height adjustment and a wide product range. The vertical motion of the table does not consume air.

Versatron Options

- Servo laning module for non-round bottles
- Right-angle or counterflow casefeed
- Label protection strips
- 5 foot infeed extension
- Color touch screen
- Flap opener with flap scan
- Flap orientation

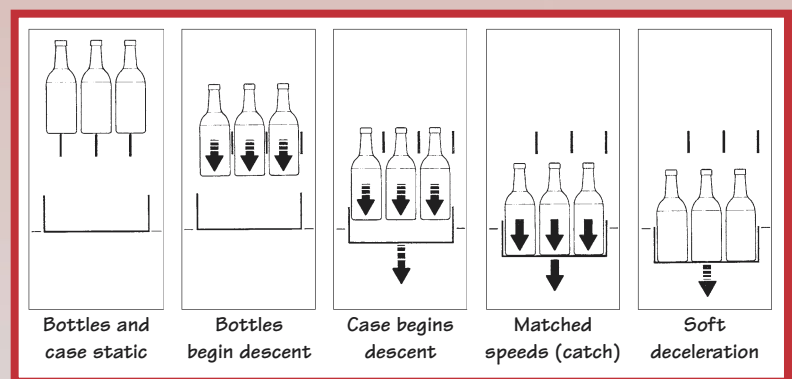


Illustration of “Soft Catch” Principle

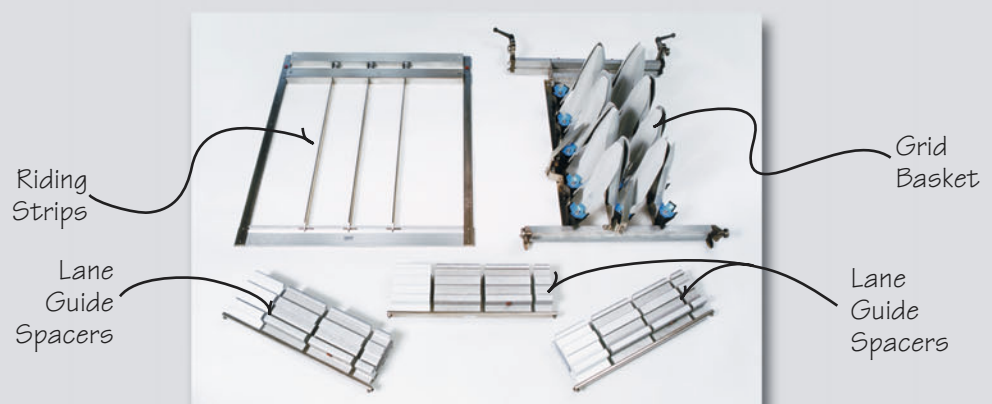
Change Parts

All Versatron change parts are designed for quick changeover.

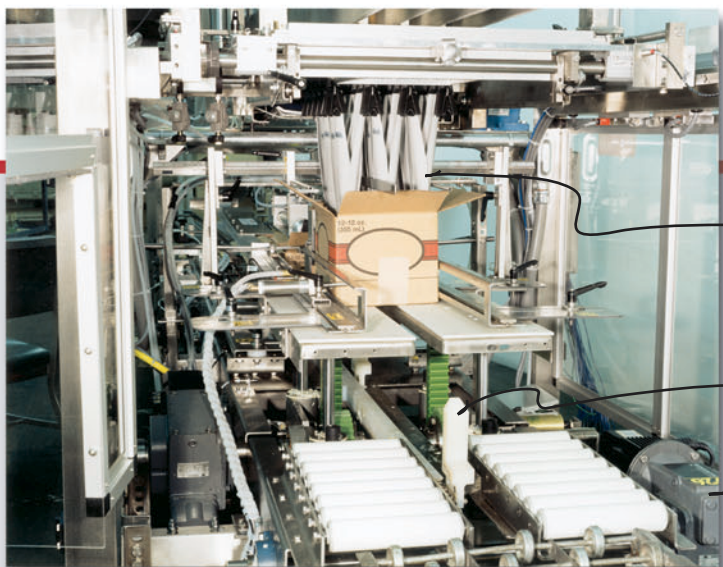
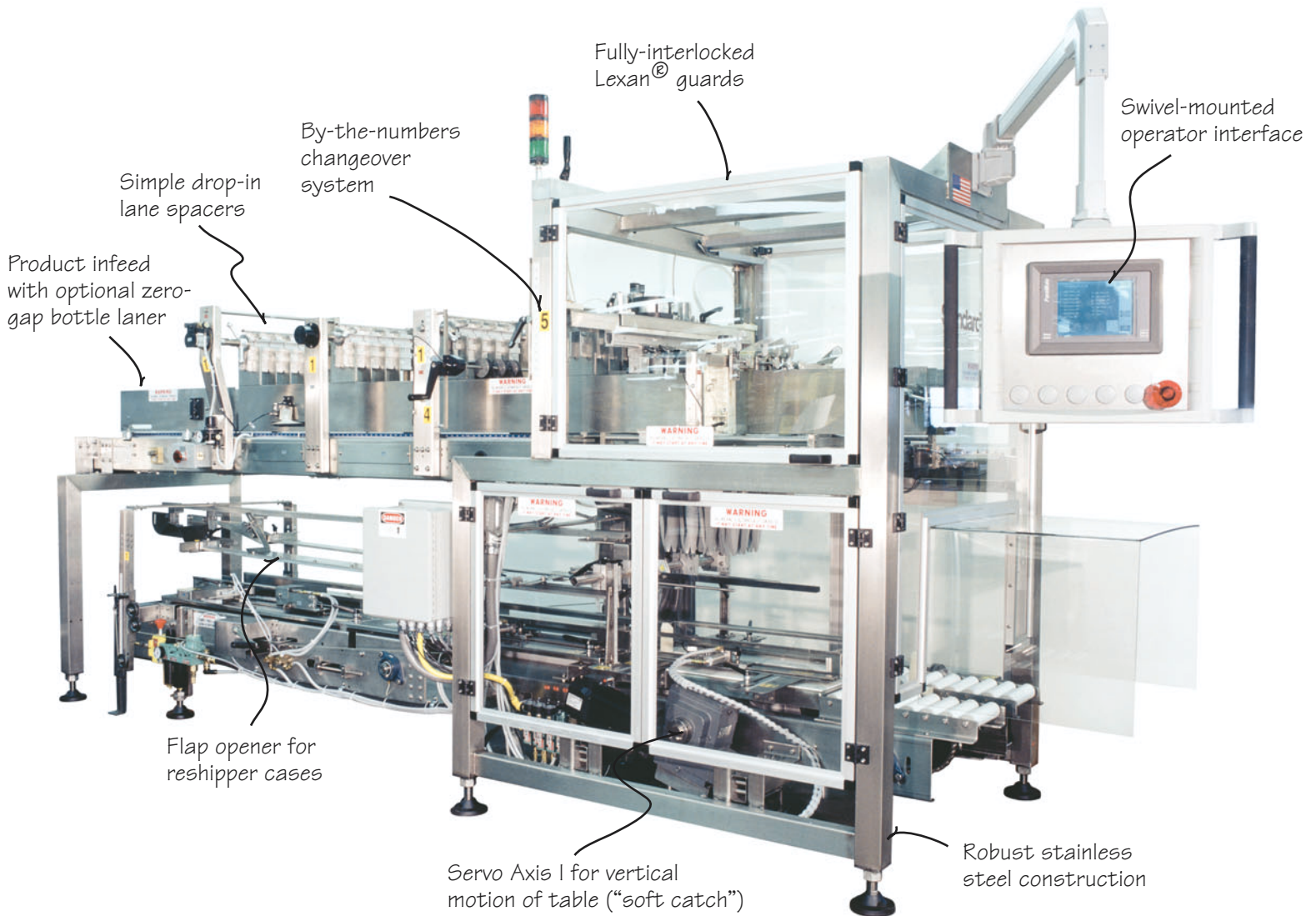
Riding Strips have unique slide-in design for automatic alignment.

Lane Guide Spacers are lightweight and have chamfered edges for easy drop-in replacement.

Grid Basket uses Standard-Knapp's patented Snap-in Grid Technology to easily change from product to product.



Versatron Features



Versatron Floor Plan†

Specifications*

Speed (dependent upon application):

- 939s: up to 45 cpm
- 949s: up to 50 cpm

Product Sizes:

Versatile packer handles all sizes within the soft drink, beer, wine, liquor, household chemicals, personal care, and food industries

Machine Construction:

Heavy-duty stainless steel, tubular with weldments

Case Types:

Plastic, corrugated, HSC, RSC, Tablock, tray

Air:

80 psi with 1/2" NPT

Motors:

- Infeed: 1 HP with VFD
- Casefeed: 1 HP with VFD
- Case Timing: Servo drive
- Lift Table: Servo drive

Controls:

I/O devices, 24 Volts, Contrologix or other upon request

Main Control Panel:

Mounted to machine opposite operator side; one connection at 30 Amp, 460 Volts

Enclosures:

NEMA 12, NEMA 4 or NEMA 4X

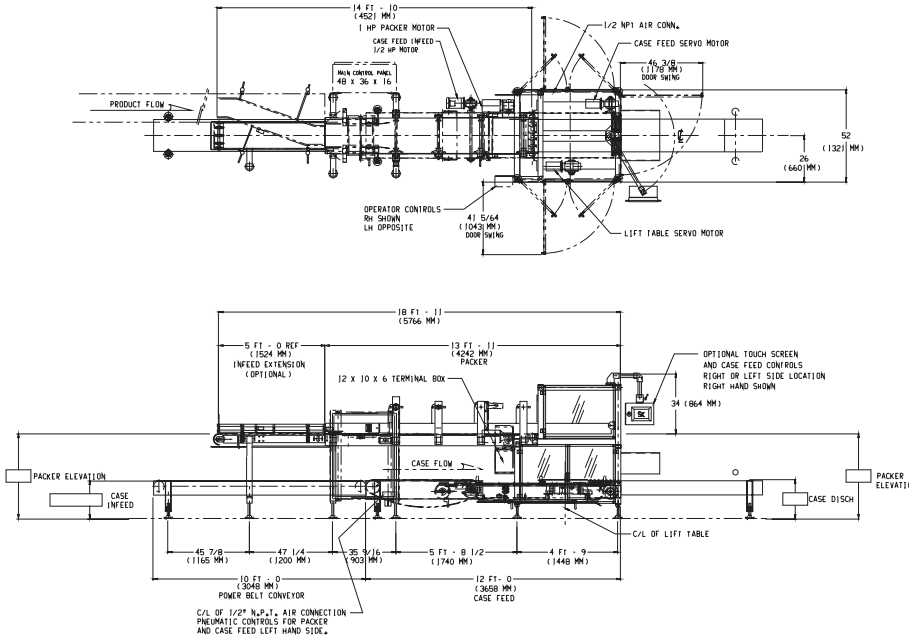
Operator Interface:

Panelview or others

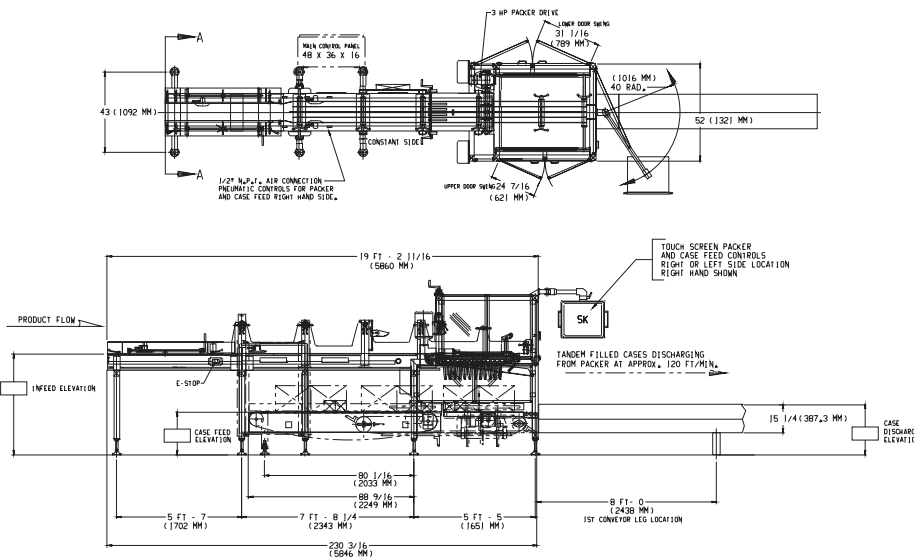
Servo System:

Rockwell Contrologix, or other upon request

* Standard-Knapp is committed to continuous product improvement. Specifications are subject to change without notice.



939s Versatron



949s Versatron Tandem

† Other configurations available; consult factory for complete details.

StandardKnapp
StandardKnapp
 an EMPLOYEE owned company

STANDARD-KNAPP, INC.

63 Pickering Street, Portland, CT 06480 U.S.A.

SALES PHONE: (860) 342-1100, ext. 239

SALES FAX: (860) 342-1557

EMAIL: info@standard-knapp.com

WEB SITE: www.standard-knapp.com

Packaging - Processing
Bid on Equipment
1-847-854-8577
www.bid-on-equipment.com

Standard-Knapp, Inc. 09-05-2M