

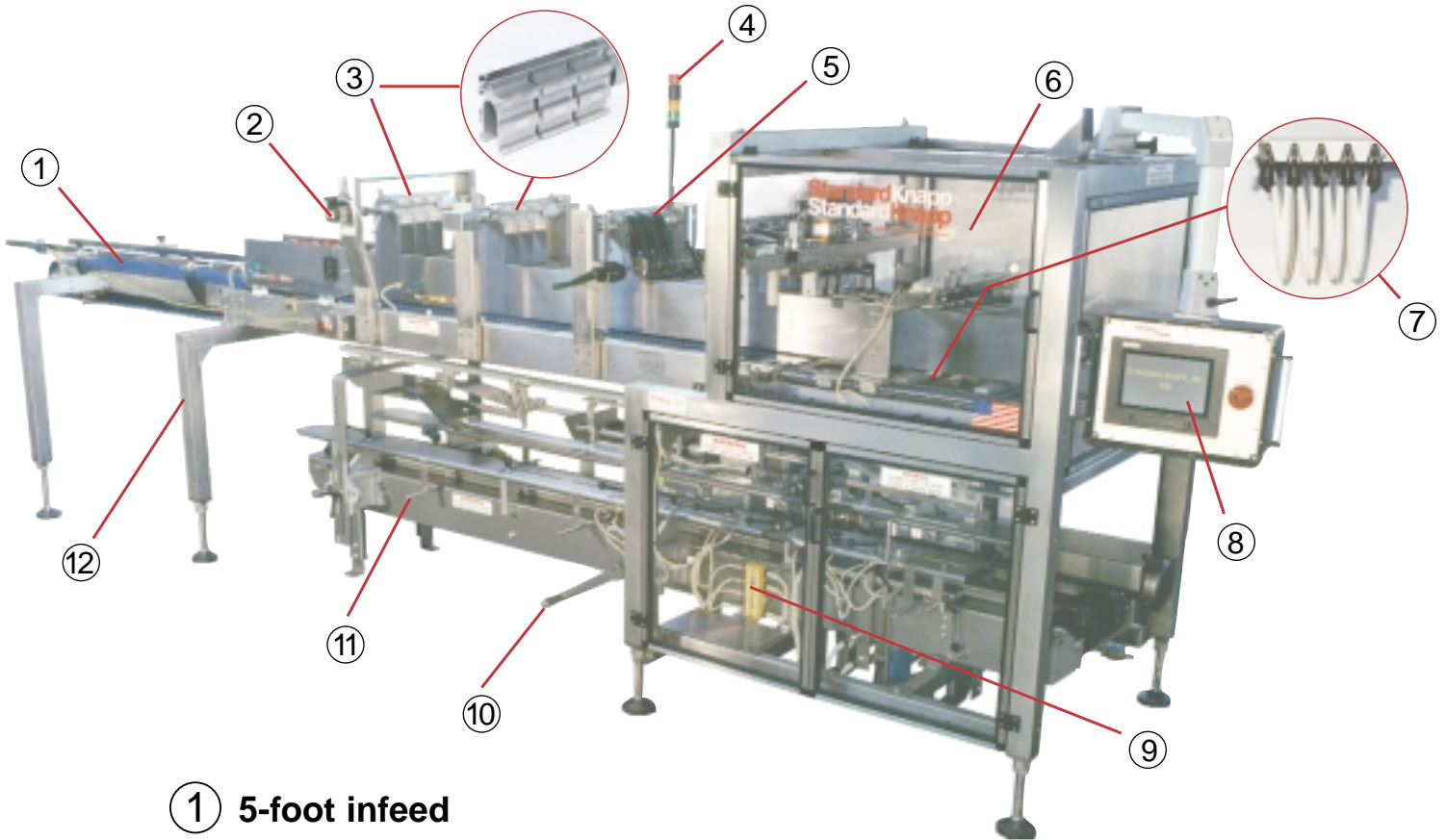
# Versatron Case Packer



**Standard Knapp**  
**Standard Knapp**

an EMPLOYEE owned company

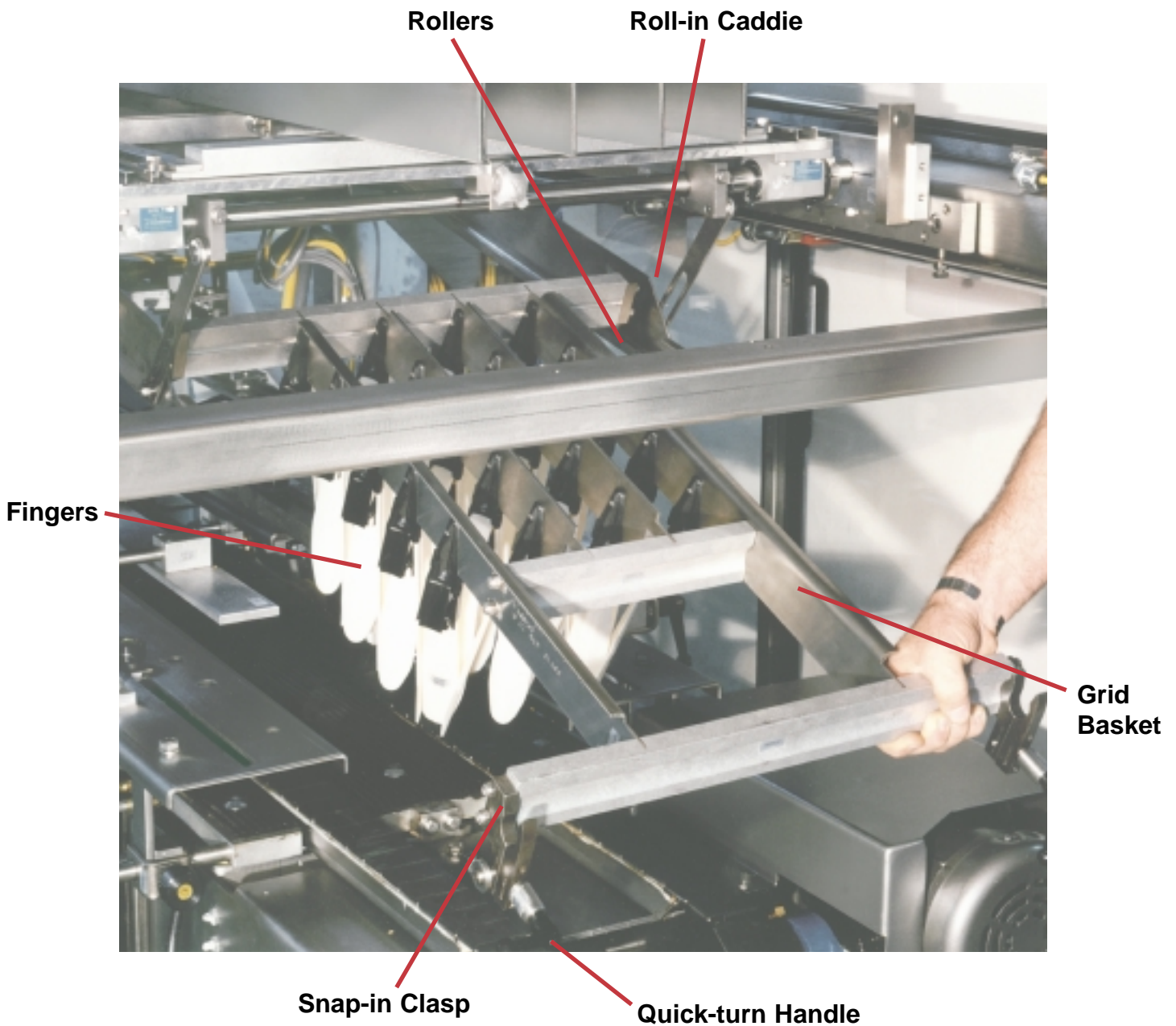
# Versatron Features



- ① 5-foot infeed
- ② On-demand oscillator
- ③ "No-tools" lane dividers
- ④ Alert beacon
- ⑤ Down product detectors
- ⑥ Guards – full length
- ⑦ Snap-in grid
- ⑧ Optional touch screen operator interface
- ⑨ Quick disconnect wires for control devices
- ⑩ Quick-adjust handles
- ⑪ Optional flap opener
- ⑫ Sturdy stainless steel construction



**STANDARD-KNAPP, INC.**  
127 Main Street, Portland, CT 06480 U.S.A.  
**SALES PHONE:** (860) 342-1100, ext. 239  
**SALES FAX:** (860) 342-1557  
**EMAIL:** info@standard-knapp.com  
**WEB SITE:** www.standard-knapp.com



Standard-Knapp introduced the packaging industry to grid-style packers and has since developed and advanced the grid and grid finger technology. Fingers may be plastic or stainless steel, depending upon the application.

The "snap-in grid basket" eliminates the need for hoists and allows one attendant to remove and replace the grid during changeover. This system is fast and efficient. The "roll-in caddie" design makes changeover simple by allowing the grid to roll in and snap up into place.

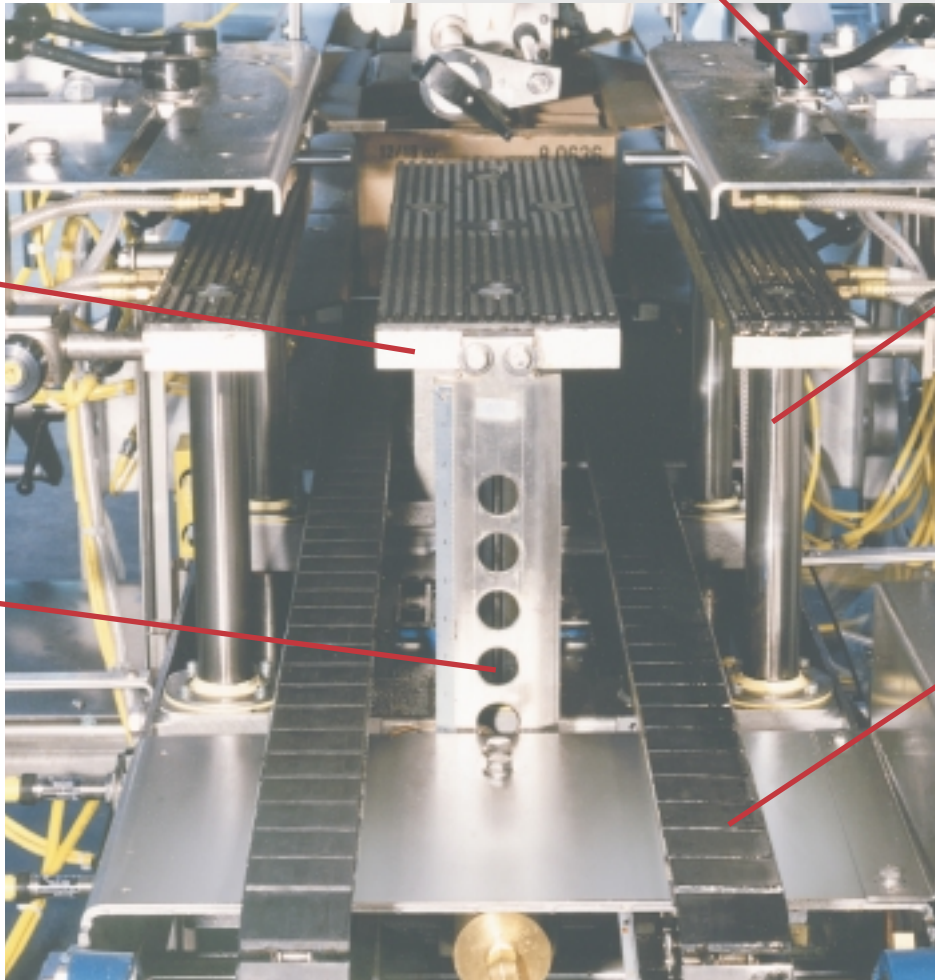
## Options

- Narrow case feed
- Indexing case feed
- Tandem case handling
- Non-round product handling
- Flap opener
- Touch screen operator interface
- Right angle, in-line or counter flow case handling

Quick-adjust handles eliminate the need for tools.

Heavy-duty construction makes this the most durable lift table in the industry.

These peg holes and a solenoid allow an immediate table stop in the event of an E-stop or power down.



Two Thompson linear shafts provide exact alignment and years of maintenance-free operation.

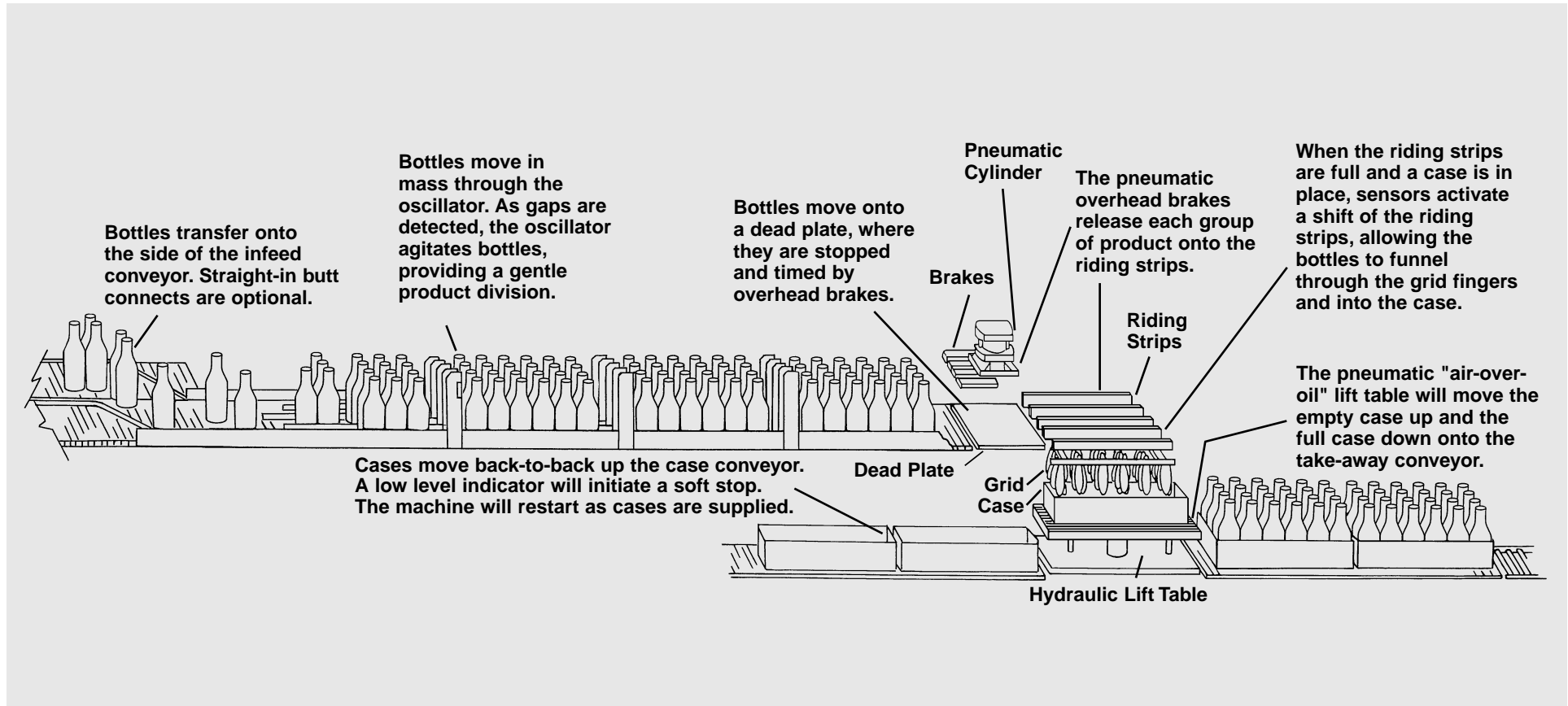
Either rubber coated chain or stainless steel chain is available upon request.

## Operation and Maintenance Made Easy

- Quick "no-tools" changeover
- Complete interlocked guarding, designed into frame
- Easy and convenient operator controls
- Quick disconnect wires
- Low maintenance
- Stainless steel construction
- "All-inclusive" base machine competitively priced
- Modern cell-type manufacturing guarantees high quality and reliability

# Versatron

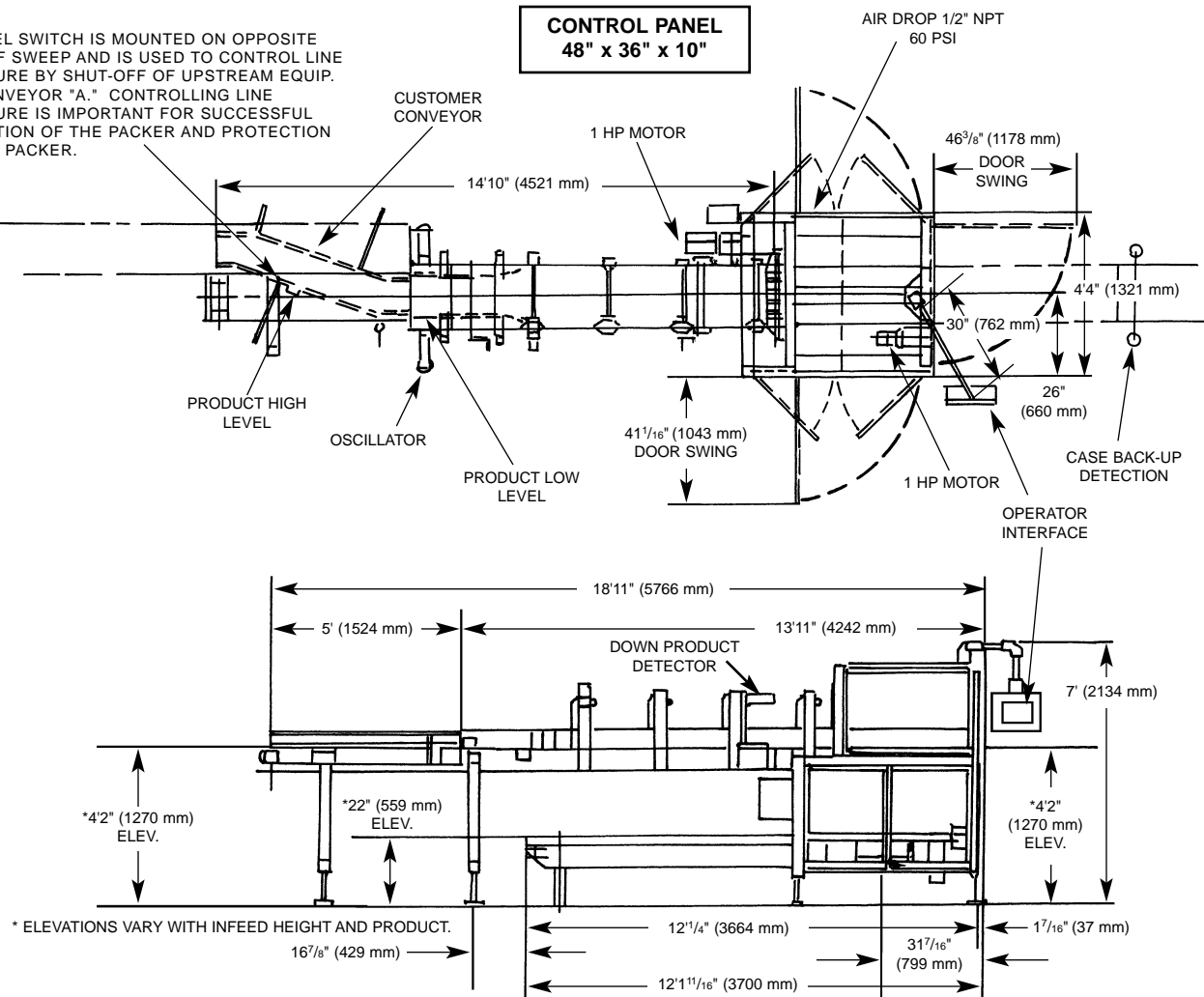
## Description of Operation



**STANDARD-KNAPP, INC.**  
127 Main Street, Portland, CT 06480 U.S.A.  
**SALES PHONE:** (860) 342-1100, ext. 239  
**SALES FAX:** (860) 342-1557  
**EMAIL:** [info@standard-knapp.com](mailto:info@standard-knapp.com)  
**WEB SITE:** [www.standard-knapp.com](http://www.standard-knapp.com)

# Versatron Floor Plan

HI-LEVEL SWITCH IS MOUNTED ON OPPOSITE SIDE OF SWEEP AND IS USED TO CONTROL LINE PRESSURE BY SHUT-OFF OF UPSTREAM EQUIP. OR CONVEYOR "A." CONTROLLING LINE PRESSURE IS IMPORTANT FOR SUCCESSFUL OPERATION OF THE PACKER AND PROTECTION OF THE PACKER.



## Specifications

**Speed:** Up to 35 cpm<sup>†</sup>

**Cases:**

- Plastic, corrugated, wood
- HSC, RSC, Tablock, tray
- Height from 1.5 to full bottle height
- Tandem, double tier

**Infeed:** Butt connect; side sweep onto 5' infeed extension

**Controls:** 24 volts DC with an A-B SLC-500

**Main Control Panel:** Free-standing, NEMA 12; one electrical connection, 15 amp @ 460V

**Operator Interface:** On swivel boom, rotates around machine; optional smart screen display

**Discharge:** Powered conveyor by customer

**Air Connection:** 60-80 PSIG, 1/2" NPT

**Enclosures:** NEMA 12

**Motors:** Two 1 HP motors; packer motor with an A-B 1333 frequency drive

Stainless steel packer frame and infeed

Standard-Knapp is committed to continuous product improvement. Specifications are subject to change without notice.

<sup>†</sup> Depending on product and cases.



## STANDARD-KNAPP, INC.

127 Main Street, Portland, CT 06480 U.S.A.

**SALES PHONE:** (860) 342-1100, ext. 239

**SALES FAX:** (860) 342-0782

**EMAIL:** info@standard-knapp.com

**WEB SITE:** www.standard-knapp.com