

457 Flight Hot Melt

## Model 457 Sealstar Hot Melt Case Sealer

### Application

The Standard-Knapp 457 Case Sealer is a fully automatic machine which closes and seals the flaps of corrugated cases using a hot melt system. Sealstar handles a wide range of case sizes at speeds from 15 to 50 cases per minute. In addition, Standard-Knapp can provide the special engineering and/or options required for handling special case gluing needs such as overlap flap cases and shy flaps.

### Operation

Sealstar employs an electrically controlled glue system for application of hot melt adhesive to top and bottom flaps or top flaps only. Glue is fed from a reservoir under pressure to the applicators and onto the flaps. The application of the glue pattern is controlled by a solid state repeat cycle timer and glue flows only when a case actuates the control circuit switch. Glue and skip spacing is easily set using adjustable knobs with digital readouts. This insures fast, accurate setting.

A 36" compression unit is an integral part of the 457 hot melt case sealer. Flaps are sealed tightly by a flexible compression shoe which conforms to any board surface irregularity. Teflon coating reduces friction and prevents product scuffing or marring.

#### *Flight Models.*

Cases entering the gluer (top flaps open, bottom flaps unglued) are timed into a flight bar system by a pneumatic lift-type timer which maintains case squareness. A platen supports the bottom inner flaps and the product. The top leading inner flap is closed by a bullnose, the top trailing flap by a pneumatically operated kicker. Upper and lower side flaps are folded closed over the inner flaps to seal the case.

#### *Belt Models.*

Cases are fed to the high friction belt machine, bottom flaps sealed and top flaps open. The outer flaps are held in a vertical position by guides until the glue pattern has been applied. Outer flaps are then closed over the inner leading and trailing flaps.

### Standard Features

- Number coded parts for positive identification and easy replacement
- Screw adjustment for width and height from either left or right side of the machine
- On demand operation of air-powered flap closer
- Line jam safety switch
- Safety overload protection for flight bar drive
- Solid state controls with digital readout

### Options

- LTI Hot Melt Unit
- Rule 41 glue pattern (4 stripes per flap)
- Selector switch for top only, bottom only or top & bottom gluing
- Transformer for other than 230 volts

# Model 457 Specifications

## SEALING MODE

Flight: Top, bottom, top & bottom  
Belt: Top only

## ELECTRICAL

Motor: ¼ HP, 25:1 gearbox,  
230/460 volts, 60 Hertz, 3-phase  
Controls: 110 volts, 60 Hertz, single-phase  
Approximate power consumption: 3.90 kwh

**AIR** 1.3 cfm at 40-45 psi at 15 cpm

**GLUE SYSTEM** Nordson

## FLAPS GLUED

Hot melt applied to top inner flaps and bottom outer flaps.

## CASE SIZE RANGE

	MIN.	MAX.
Length	8" (203 mm)	23" (584 mm)
Width	7" (178 mm)	18" (457 mm)
Height	4" (102 mm)	20" (508 mm)

**CASE WEIGHT** Handles cases weighing up to 40 lbs.

## WEIGHT

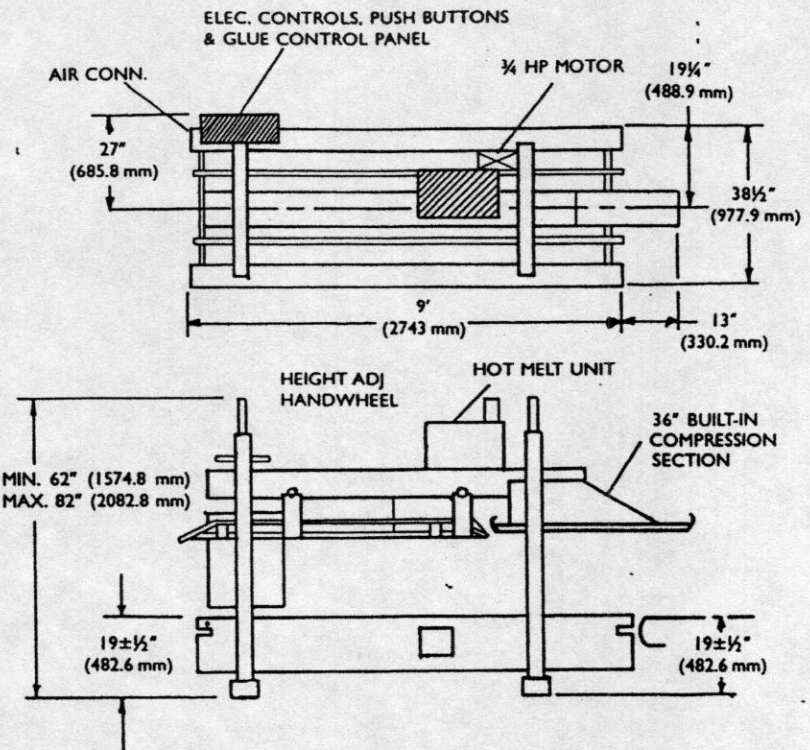
Flight: 1950 lb (885 kg)  
Belt: 1750 lb (795 kg)

## MAXIMUM LENGTH

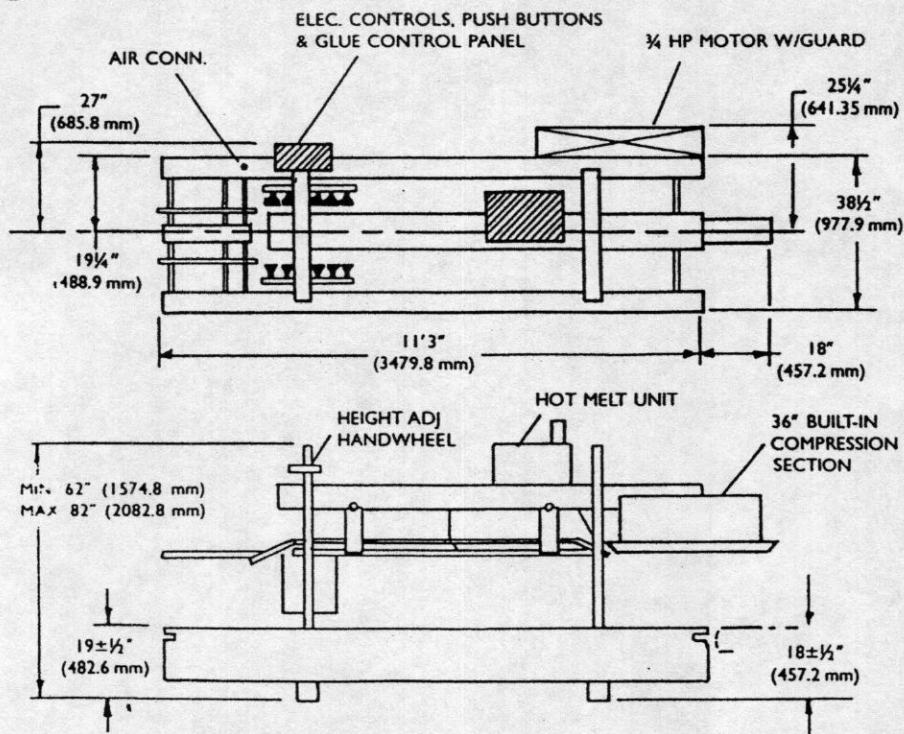
Flight: 11'3" 12'3"  
Belt: 9'

Note: specifications subject to change without notice.

Scale: ¼" = 1'



457HM BELT MODEL



457HM FLIGHT MODEL

## Information for ordering

- For each case size:
  - Type and dimensions
  - Speed in cases per minute
  - Case load pattern
  - Case material (number of walls in corrugated and its bursting strength).
- Orientation of cases as received at the intake of the Standard-Knapp equipment.
- Special case and product information such as: product condition (wet, frozen, etc.); nature of product (heavy, fragile, compressible, etc.).
- Elevations required at infeed and discharge.

## OTHER STANDARD-KNAPP PRODUCTS

- Bottle, Can & Package Packers
- Case Openers/Positioners
- Elevator/Lowerators
- Rinsers
- Shrink-Wrap Systems

Packaging - Processing

**Bid on Equipment**

1-847-854-8577

www.bid-on-equipment.com