

G-Series

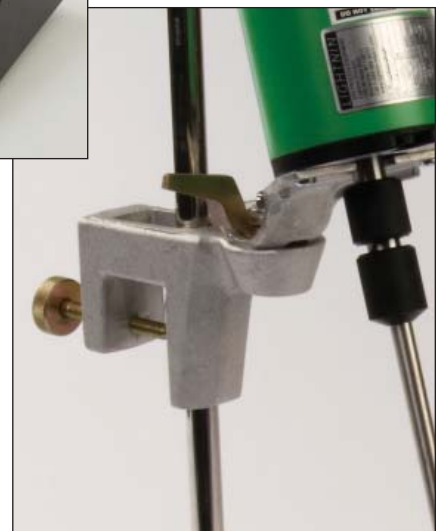
The lower cost alternative laboratory mixing solution

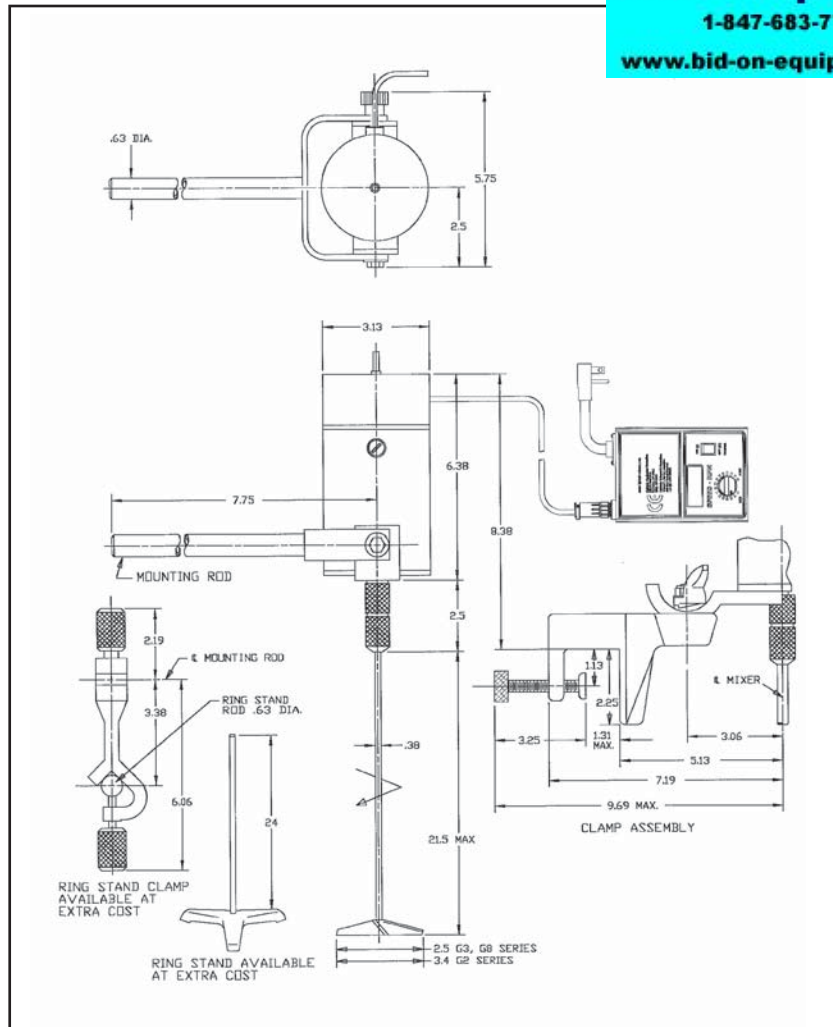
The LIGHTNIN G-Series achieves the required process results in water-like liquids, high viscosity blending or gas-liquid-solid applications. The G-Series is the workhorse of the laboratory mixers. The NEW controller can be supplied with or without a digital readout for speed. Speed control is managed with one simple knob.



An Exceptionally Versatile Mixing System

- Largest mixing capacities in the industry
- NEW reversible rotation for up- or down-pumping experiments
- Patented mixing impellers provide maximum efficiency
- Displays speed, 50 – 2,200 RPM \pm 10 RPM
- Single lever adjustment clamp – repeatable mixer positioning
- Splash resistant wipe down design for cleanability
- World-wide design, single phase 50 or 60 Hz





Worldwide commitment: International certification

These products are CE marked for the European Community, UL listed for the USA, CSA certified for Canada and T marked for Japan. In addition, they are ETL listed and certified for many other countries.

Call the LIGHTNIN experts

For more information about the G Series or to discuss your application, contact your local LIGHTNIN Sales Representative. Or visit our website at www.spxpe.com. Or call 1-888-649-2378 (888-MIX-BEST) (U.S. and Canada) or +1 (585) 527-5550 (worldwide).

SPX Process Equipment

For more information about our worldwide locations, approvals, certifications, and local representatives, please visit our web site.
Web Site: www.spxprocessequipment.com • E-Mail: lightnin@processequipment.spx.com

135 Mt. Read Blvd., Rochester, NY 14611 Telephone: (888) 649-2378 (888-MIX-BEST), (U.S. and Canada) or +1 (585) 436-5550 (Worldwide)

SPX Process Equipment reserves the right to incorporate our latest design and material changes without notice or obligation. Design features, materials of construction and dimensional data, as described in this bulletin, are provided for your information only and should not be relied upon unless confirmed in writing. Certified drawings are available upon request.
 Issued: B-920-L-04/07