



# LIGHTNIN

## LIGHTNIN SanStar Line of Sanitary Mixers



## LIGHTNIN Aftermarket Services: The Fastest Route To Uptime.

**Expertise:** Experienced technicians are the backbone of our dedicated service organization. They're uniquely qualified to keep your LIGHTNIN mixers running right.

**Lightnin Certified Technicians:** Aftermarket technicians are certified via training courses to ensure that the work they do meets the highest standards for consistency and reliability.

**Genuine LIGHTNIN Parts:** All repairs follow original design specs and use only factory-authorized replacement parts.

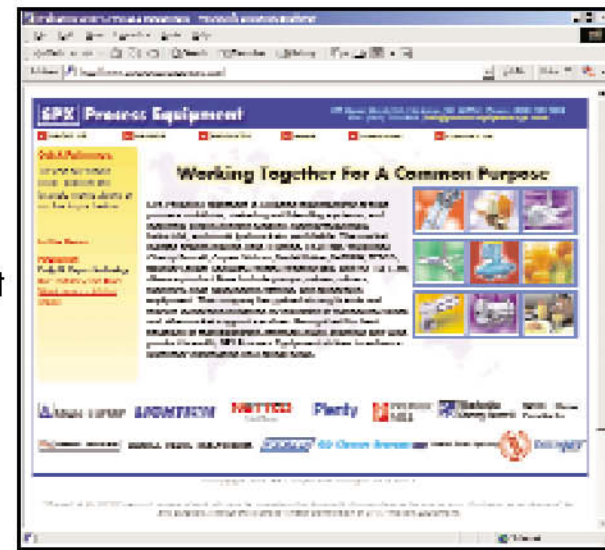
**Full LIGHTNIN Factory Warranty:** We're so confident we'll do the job right that all authorized repair and service work is covered by a full factory warranty. What we repair, we guarantee — 100%.

- Factory Service Program
- Exchange Program = Minimal Downtime
- Quick Turnaround

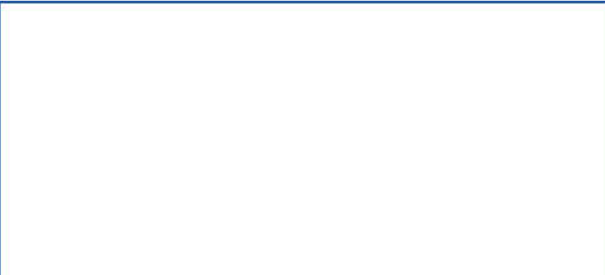


An SPX Process Equipment Operation

For more information about LIGHTNIN's Bio-CIP or to discuss your application, contact your local LIGHTNIN Sales Representative. Visit our website: [www.spxprocessequipment.com](http://www.spxprocessequipment.com) or contact us at [LIGHTNIN@processequipment.spx.com](mailto:LIGHTNIN@processequipment.spx.com) Call 1-888-MIX-BEST (U.S. and Canada) or +1 (585) 436-5550 (Worldwide). Fax +1 (585) 436-5589.



### Your Local Contact



For technical details on products and services available from SPX Process Equipment, contact us at [info@processequipment.spx.com](mailto:info@processequipment.spx.com) or visit [www.spxprocessequipment.com](http://www.spxprocessequipment.com)

## Bio-CIP MagMixer™

The Newest Member of the SanStar Line of Sanitary Mixers

**Packaging - Processing**  
**Bid on Equipment**  
 1-847-683-7720  
[www.bid-on-equipment.com](http://www.bid-on-equipment.com)

2005 LIGHTNIN, AN SPX PROCESS EQUIPMENT OPERATION  
 LIGHTNIN IS A REGISTERED TRADEMARK OF LIGHTNIN IN THE UNITED STATES AND MAY BE REGISTERED IN OTHER COUNTRIES.

## First Ever Clean-In-Place Top Entry MagMixer!

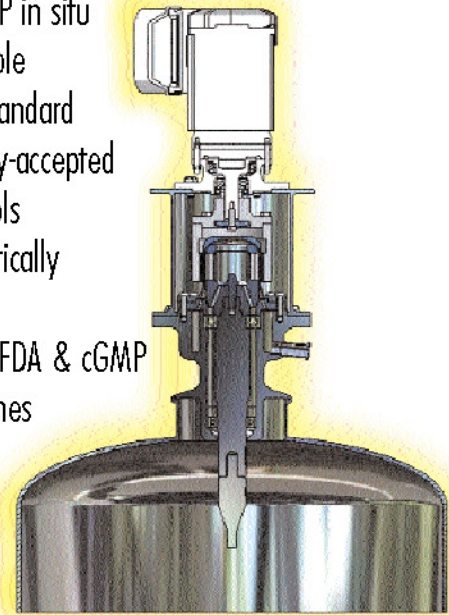
# Bio-CIP Top-Entry MagMixers

## From the LIGHTNIN Family of SanStar Mixers

Specifically designed and developed to meet the industry demand for sealless Bioreactor mixers. This line of mixers is supported by LIGHTNIN's 80 plus years of unrivaled experience in mixing technology, process knowledge, and technological innovation.

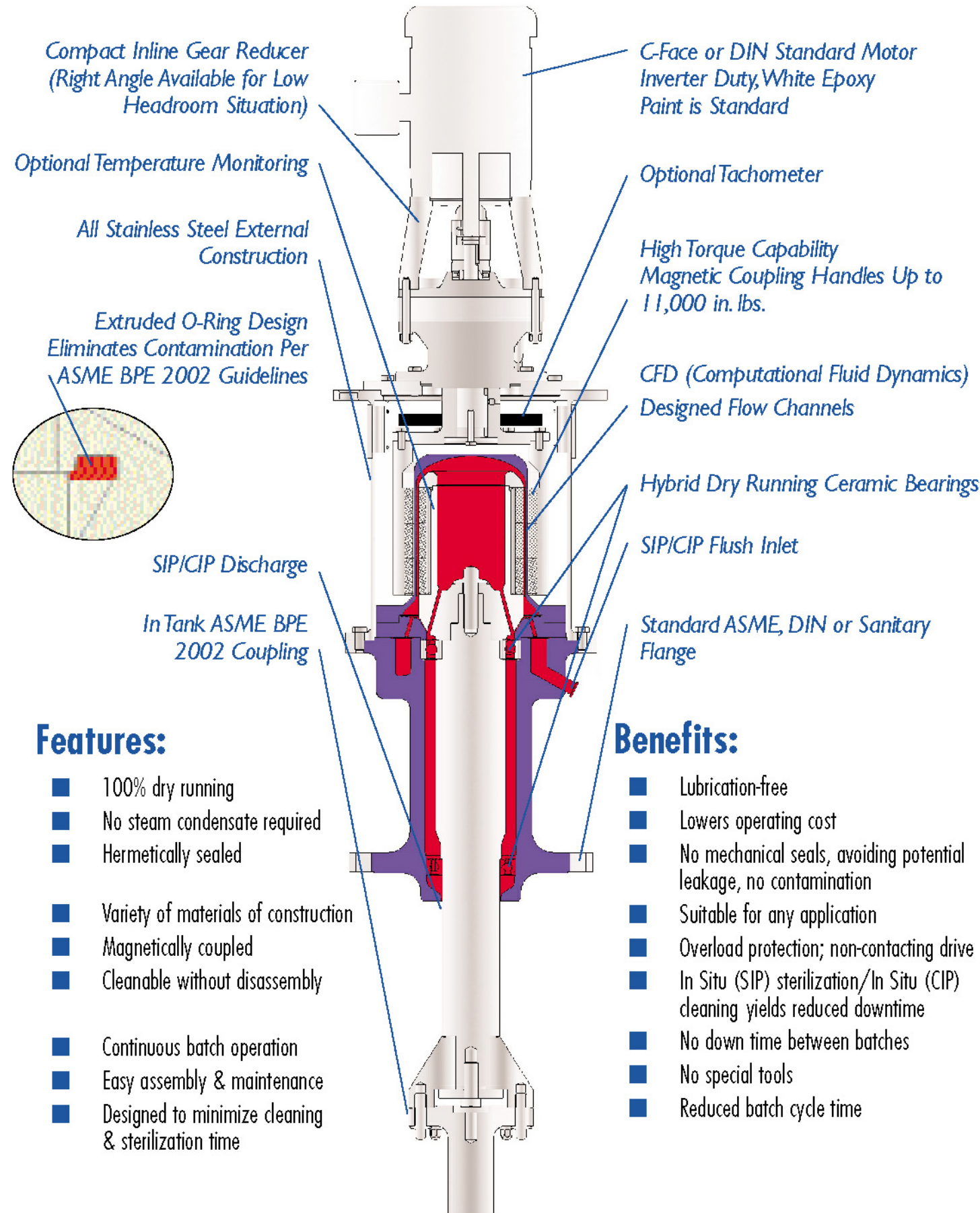
- Designed specifically for the BioTech & Pharmaceutical industries
- Elimination of mechanical seals and associated maintenance
- SIP/CIP in situ cleanable with standard industry-accepted protocols
- Hermetically sealed
- Meets FDA & cGMP guidelines

Typical BioPharm Installation



### Applications:

- BioReactors
- Fermenters/Purification
- Pharmaceutical Processing
- Markets that require full process containment



### Features:

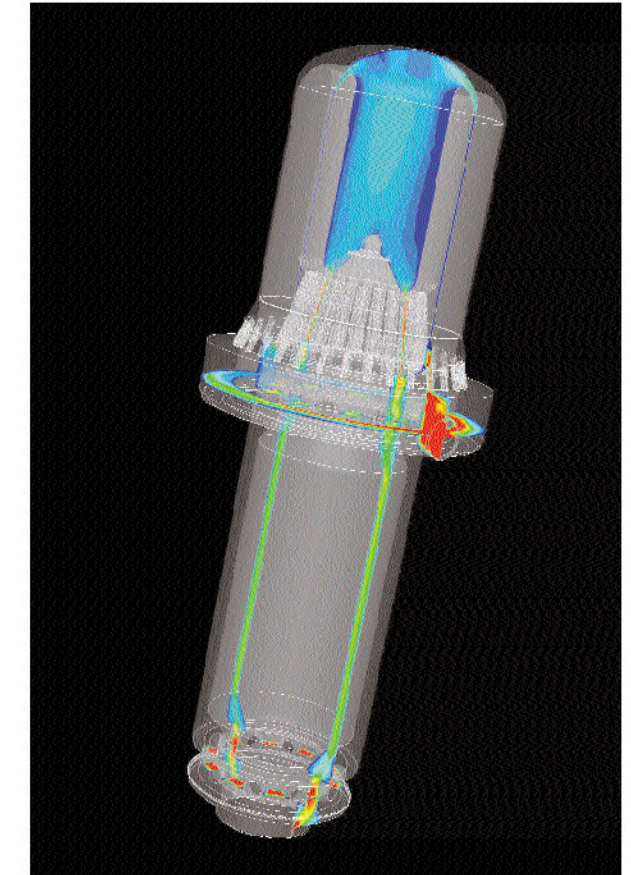
- 100% dry running
- No steam condensate required
- Hermetically sealed
- Variety of materials of construction
- Magnetically coupled
- Cleanable without disassembly
- Continuous batch operation
- Easy assembly & maintenance
- Designed to minimize cleaning & sterilization time

### Benefits:

- Lubrication-free
- Lowers operating cost
- No mechanical seals, avoiding potential leakage, no contamination
- Suitable for any application
- Overload protection; non-contacting drive
- In Situ (SIP) sterilization/In Situ (CIP) cleaning yields reduced downtime
- No down time between batches
- No special tools
- Reduced batch cycle time

## Materials of Construction:

- Standard 316L Construction
- Alternative materials e.g. AL6XN or Hastelloy
- In tank components available in many alloys
- Hybrid Bearings Silicone Nitride Balls 440C Races with a variety of pharmaceutical/biotech materials
- Special USP Class VI flow through bearing retainer



State-of-the-Art Computer Aided Design and Flow Modeling

## Technical Data:

- Patented design; additional patents pending
- Five standard sizes from 1/4 Hp through 10 Hp
- Speeds to 350 RPM available
- LIGHTNIN's Impeller Spectrum for process specific mixing solutions