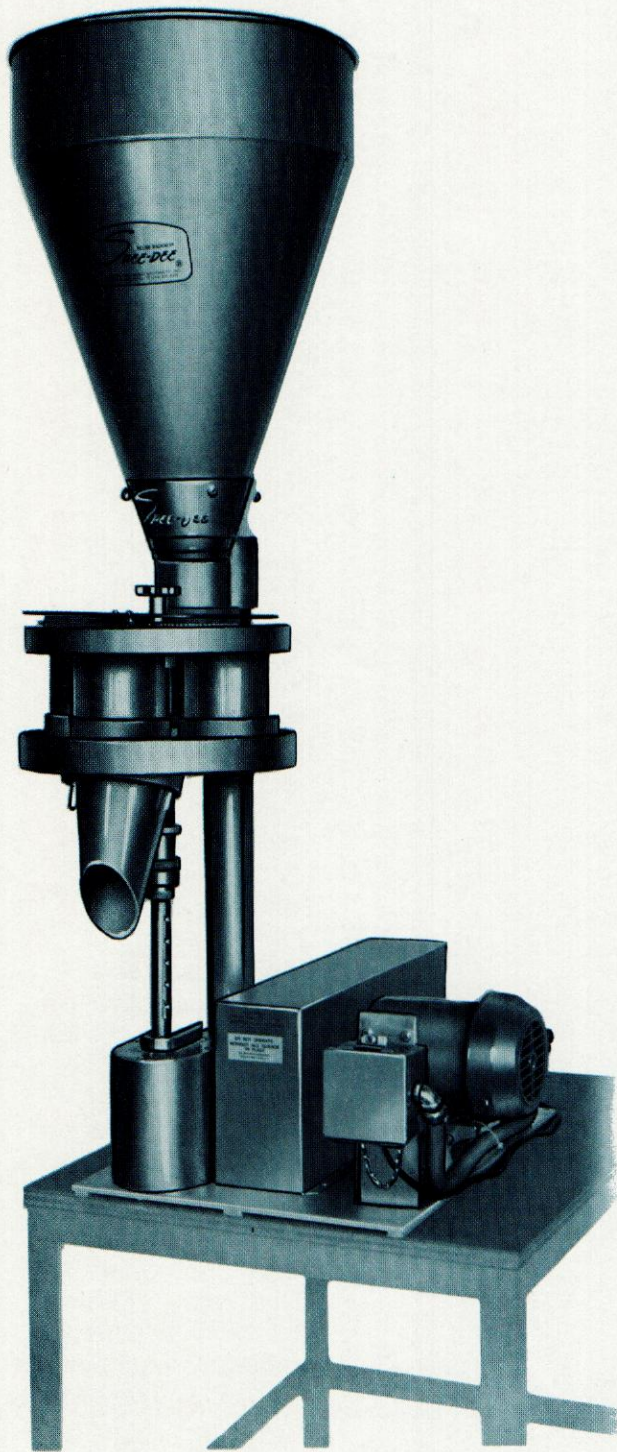


# SPEE-DEE®



Shown with 2 cu. ft. hopper

Distributed by:

**Packaging - Processing**  
**Bid on Equipment**

1-847-683-7720

[www.bid-on-equipment.com](http://www.bid-on-equipment.com)

## BR Series Fillers

Low cost, high speed replacement for hand scoops, slow scales, and make shift devices.

### •The "Weight-By-Volume Cup" Technique

SPEE-DEE filling machines accomplish **accurate** weighings by filling a measured **volume cup**, leveling off the product and discharging the measured amount into a bag or container. The principle is the same one used by cooks for centuries, to "**measure**" rather than "**weigh**" ingredients. The weight is accurate because the volume is the same. In fact, cup filling heads are used on some of the most sophisticated packaging machines in the world.

### •The Versatile BR Series

The standard SPEE-DEE BR machine with a 2 cu. ft. stainless steel hopper, and a full set of interchangeable volume cups and plates will allow you to run volumes of less than 1/2 cubic inch (16 cc), to 185 cubic inch (3 liters). This translates into weights from a few grams to 3 lbs. (136 kg) of average density product. The standard variable speed drive allows a wide range of filling speeds; from 6 to 48 or more per minute.

### •Durability and Reliability

Feed hoppers, cups, cupplates, and spouts are made of plain, coated, or plated aluminum or stainless steel for long wearing durability. The polished aluminum gear box is dust and moisture proof. Our simple design means fewer moving parts and less down time.

### •Fast, Accurate, and Efficient

With our Geneva Drive, cup travel time is **minimized**, while maximizing cup time beneath feed hopper and over discharge spout. Combine this with our volume cup leveling system and you can be assured of smooth, accurate filling with exact uniformity and reliability. Micrometer adjustment allows the volume to be easily adjusted to the target weight.

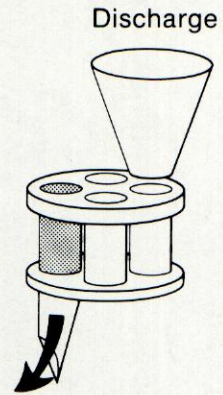
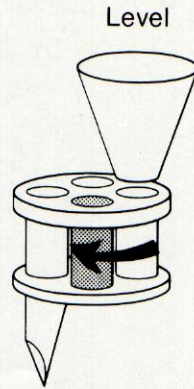
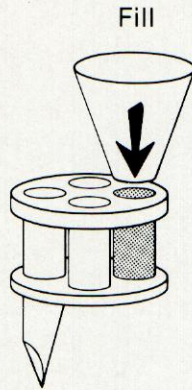
### •Flexible, Easy To Maintain

The complete unit is readily portable. Its base plate can be bench mounted or placed on a floor stand with optional casters. Add a heavy duty Geneva Drive and electric indexing and the BR will interface with a form, fill & seal machine, thermoform machine, cartoner, or can & bottle filler as a filling head. Maintenance is easy with our patented bayonet lock on the main shaft. Bottom, plates, and cups are all lowered in seconds for cleaning or changing cups. They can then be returned to original position without changing volume adjustment.

### •Backed With Confidence

SPEE-DEE has been manufacturing filling machines for over 40 years. Our durable, trouble-free design means SPEE-DEE fillers perform dependably . . . day-in and day-out . . . year-after-year. The SPEE-DEE name is known as the standard in the industry for cup filling machines.

# How it Works

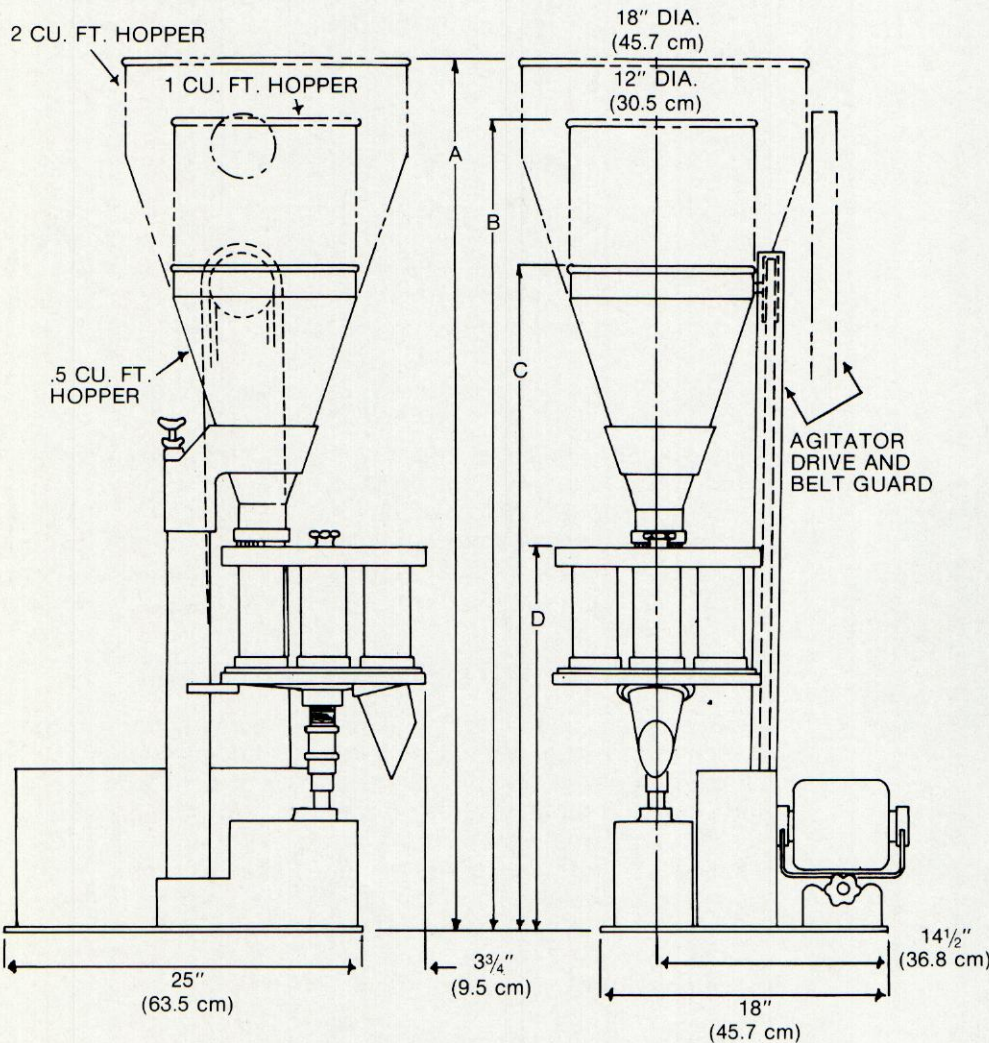


## A Sample of Applications on the BR Series

- Sunflower Seeds
- Salt
- Aquarium Sand
- Bread Croutons
- Detergent
- Raw Popcorn

- Craft Beads & Sequins
- Fertilizer
- Swimming Pool Chlorine
- Activated Charcoal
- Cake Mix
- Carmel Corn

- IQF Vegetables
- Potting Soil
- Elbow Macaroni
- Bath Powder
- Rodent Pellets
- Rose Dust



## Accessories

- Hopper Agitators
- Electric Indexing
- Heavy Duty Geneva
- Foot Switch
- Stainless Steel Plates
- Aluminum Anodizing
- USDA Modifications
- Nylon Wear Rings
- Felt Wear Rings
- S.S. Wear Plate
- Spout Dust Hood
- Explosion Proof Electrical
- Motorized Weight Adj.
- Top Plate Dust Cover
- Special Electrical
- Corrosion Resistance
- AND MORE!

Height: See Chart  
 Depth: 28<sup>3</sup>/<sub>4</sub>" (73 cm)  
 Weight: 350# (.159 kg)  
 Electrical Requirements:  
 115 VAC 60 HZ 6 AMPS.  
 Standard.

Larger Models Available

COLUMN		A		B		C		D	
in.	cm.	in.	cm.	in.	cm.	in.	cm.	in.	cm.
20	50.8	47	119.4	43.5	110.5	34.5	87.6	16.75	42.5
24	61	50.5	128.3	47	119.4	38	96.5	20.25	51.4
28	71.1	54.5	138.4	51	129.5	42	106.7	24.25	61.6
32	81.3	58.5	148.6	55	139.7	46	116.8	28.25	71.8

**SPEE-C**  
 9825 Du...  
 P.O. Bo...  
 Sturteva...  
 414/886...  
**Packaging - Processing**  
**Bid on Equipment**  
 1-847-683-7720  
 www.bid-on-equipment.com