

MODEL PTF-G

- speeds of over 300 fills/minute
- accuracies to within 1/10 oz.
- 2 oz. to 1 gallon container sizes
- no waste filling

SOLBERN TUMBLE FILLER

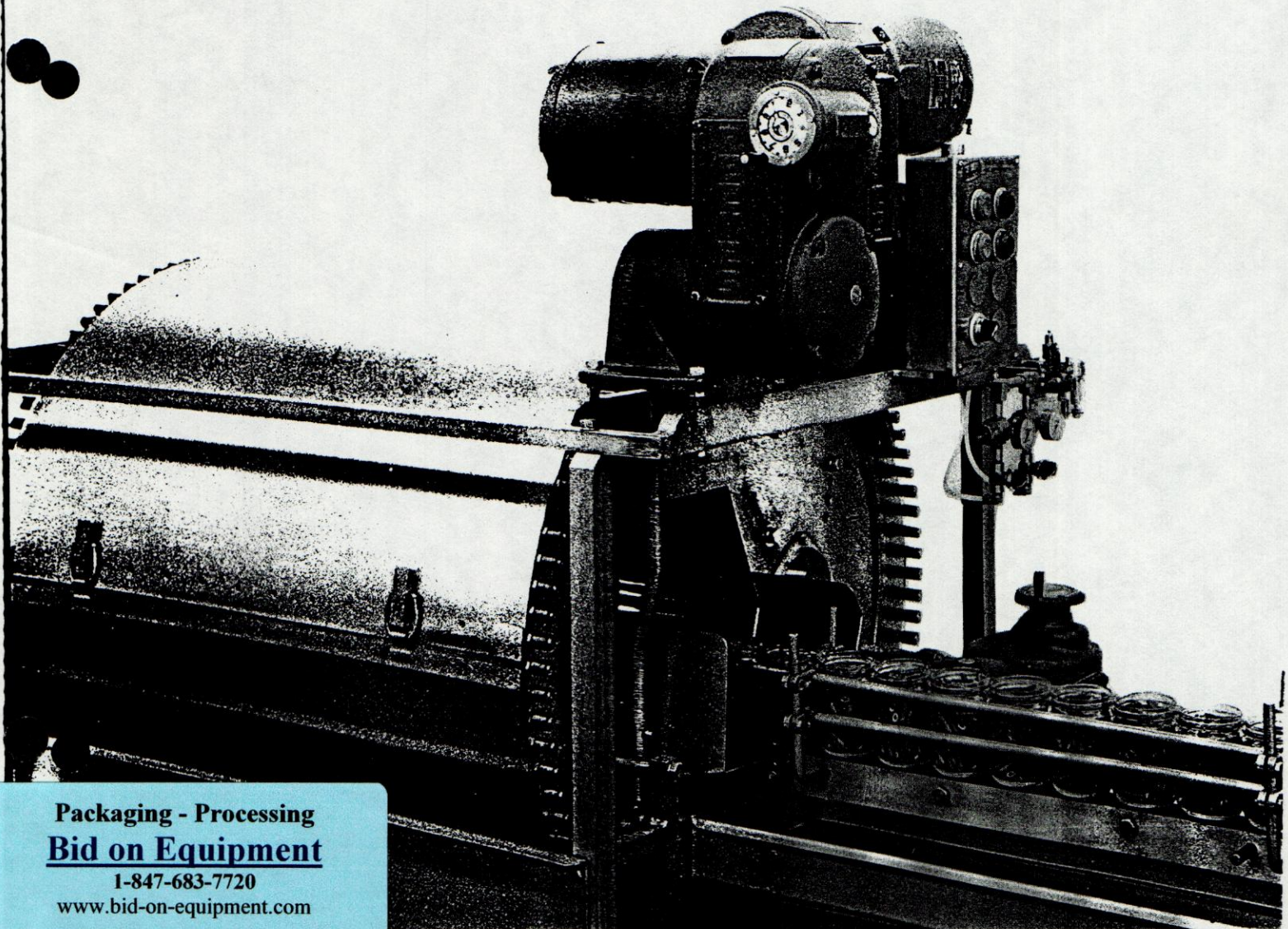
for pickles, relishes, olives
and related products

Model PTF-G Tumble Filler is designed for whole, sliced, diced, and chunky products that are not free flowing. It fills cans or jars completely or $\frac{2}{3}$ full, as required.

Typical products are:

gherkins	olives
midgets	salads
cross cuts	capers
relish	mushrooms
sweet mix	artichokes
peppers	cocktail onions
cauliflower	maraschino cherries
onions	. . . and others

Brine and syrup filling attachment available



Packaging - Processing
Bid on Equipment

1-847-683-7720

www.bid-on-equipment.com

TUMBLE FILLING...

a continuous, straight-line filling method offering high speed, extreme accuracy, and complete freedom from product damage or waste

The Solbern Model PTF-G Tumble Filler is especially well suited for filling cut and small whole pickles, relishes, olives, sweet mix and related products in glass or cans. It can provide accuracies as close as 1/10 oz. Filling speeds are adjustable from 10 to 300 units/minute. In fact, the speed of the Model PTF-G is usually limited only by the capacity of other plant equipment.

The Model PTF-G fills gradually and continuously. Containers pass through the filler in a straight line; no star wheels or troublesome positioning mechanisms are required. Delicate products are handled without bruising. Waste is completely eliminated since the entire process takes place within the filling drum.

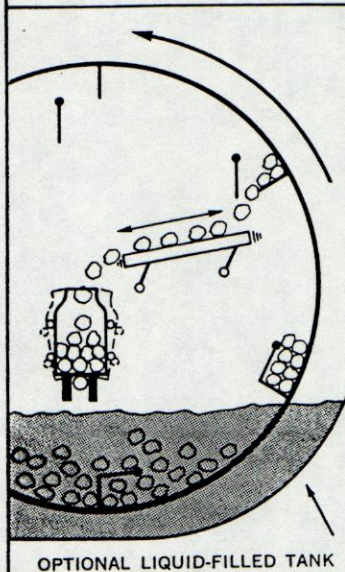
All sizes of glass container from two ounces to one gallon, or cans from four ounces to number ten, can be accommodated. Changeover from one container size or shape to another requires only a few minutes and no changing of parts is necessary.

Stainless steel and other noncorrosive materials are used throughout the Model PTF-G to assure trouble-free operation and conformance to the most rigorous sanitary requirements. All motors and drives are fully enclosed. Easily removable drum jackets make all parts accessible for fast washup.

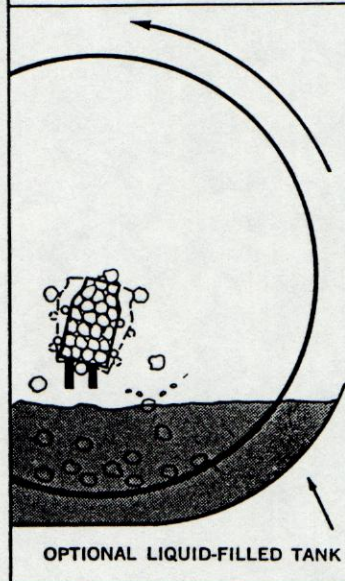
SPECIFICATIONS

Container size:	Cans from 4 oz. to #10 Glass from 2 oz. to 1 gallon
Speed:	From 10 to 300 units per minute, generally limited by other plant equipment
Drum motor:	¾ HP, 3 ph, vari-speed
Conveyor motor:	¾ HP, 3 ph, vari-speed
Shaker motor:	¾ HP, 3 ph, vari-speed
Air required:	60 psi, 10 cfm (free air)
Weight:	1550 lb.

OPERATION OF THE MODEL PTF-G TUMBLE FILLER

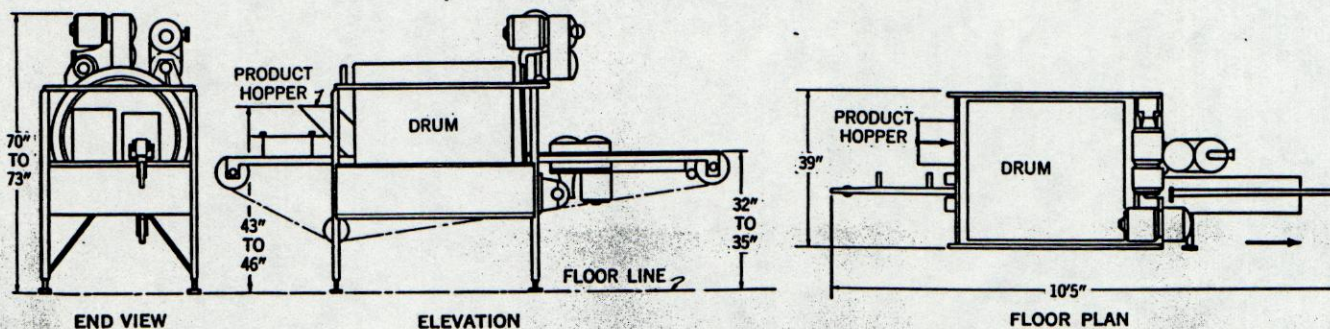


(1) Containers are conveyed in a straight line through a revolving drum into which the product is fed. Buckets on the inside of the drum carry the product onto a vibrating tray. The product then falls from the tray into the moving containers.



(2) Uniformity of fill is maintained by shaking the containers from side to side as they pass under the falling product. In this way, the containers are filled gradually and tightly; voids are eliminated. For delicate products, a liquid cushion is maintained in the drum so that there is no chance of product damage.

(3) Weight is controlled to close tolerances by tilting and shaking the containers after they have been filled. The speed of the shaker controls the amount of product permitted to remain in the container. There is no waste; the excess product spills back into the drum to be recycled into the filling operation.



Other models of Solbern Fillers are available for filling whole and cut vegetables and fruit, and dry products; leaf spinach; whole and sliced beans; and larger whole pickles and spears. Also available are fillers for frozen food cartons, film bags, and other filling applications.

SOLBERN CORP.

8 Kulick Road, Fairfield, N. J. 07006, Telephone: (201) 227-3030

Solbern . . . specialists in accurate, high speed container filling

Packaging - Processing
Bid on Equipment

1-847-683-7720

www.bid-on-equipment.com