

## INFORMATION

**SHICK TUBE-VEYOR CORPORATION'S** two-way Gravity Diverter Valve

is designed to direct a material stream in a gravity drop application. These fabricated units are designed for non-pressure applications and are available in 8", 10" and 12" square inlet and based on a 30° divert angle. The internal gate is neoprene coated to ensure a tight seal.



GRAVITY DIVERTER VALVE

## STANDARD FEATURES

**SMOOTH FLOW** - 30° divert angle ensures consistent flow of material.

**RUGGED CONSTRUCTION** - Fabricated carbon steel or stainless steel housing.

**NEMA** - 4 & 9, 4x and 7 available.

**MACHINED SHAFT AND END**

**BEARING** - for long-lasting actuation of valve.

**NEOPRENE COATED GATE** - provides a dust-tight seal.

**PROOF-POSITIVE VALVE POSITION** -

Dual limit switch configuration provides assurance of complete actuation of air cylinder.

**AIR CYLINDER OPERATED** - and solenoid actuated for automated discharging of material.

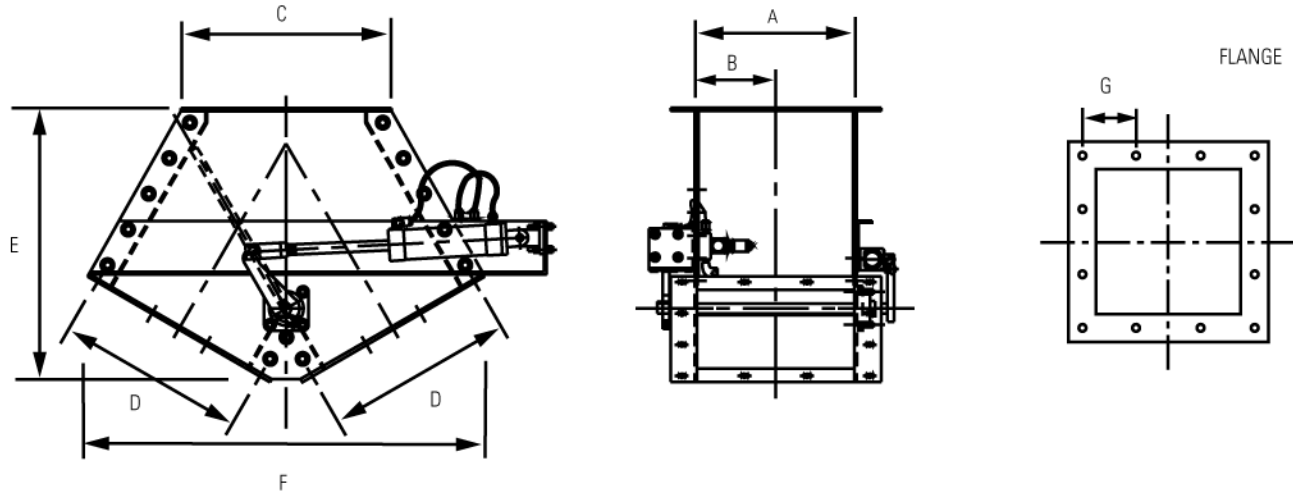


SHICK TUBE-VEYOR CORPORATION

4346 Clary Boulevard • Kansas City, Missouri 64130 • P (816) 861-7224 • F (816) 921-1901

Packaging - Processing  
**Bid on Equipment**  
1-847-854-8577  
[www.bid-on-equipment.com](http://www.bid-on-equipment.com)

## SCHEMATICS



## DIMENSIONS

GDV	Weights KG/Lbs.	A In/mm	B In/mm	C In/mm	D In/mm	E In/mm	F In/mm	G In/mm
8"	23/50	8/203	4/102	11.375/288	11.375/208	14.5/36	30/762	4.875/124
10"	43/95	10/254	5/127	14/356	12.375/314	18.25/464	32/813	4.125/105
12"	59/131	12/305	6/152	16/406	16/406	21/533	35.5/902	4.75/121

## OPTIONS FOR

Manual operator units provided with handle for manual operation.

### NOTES:

1. Compressed, clean, dry air requirement is 80 to 125 psig
2. When electrical signal is interrupted, the valve returns to the "at rest" position.
3. The diverter gate cannot be actuated against a head of material.
4. All weights include air cylinder, solenoids and limit switches for carbon steel units and are nominal.

### HEADQUARTERS:

Shick Tube-Veyor Corporation  
 4346 Clary Boulevard, Kansas City, MO 64130  
 P (816) 861-7224 / F (816) 921-1901

Shick Tube-Veyor Asia Pacific PTE LTD  
 32 Ang Mo Kio Industrial Park 2  
 #02-03 Sing Industrial Complex, Singapore 569510  
 Tel: (65) 4824600 Fax: (65) 4818255  
 www.shicktube.com

*Information on this page is subject to change without notice. For additional information on this and other Shick Tube-Veyor products and services, please call Shick directly or your local representative.*

### REPRESENTED BY:

