

INFORMATION

SHICK TUBE-VEYOR CORPORATION offers a full line of pressure, vacuum and aeration blower packages. When integrated with a motor, drive and related components, a positive displacement blower supplies a consistent volume of air and pressure which overcomes system and material losses in order to reliably convey a dry solid in a pressure or vacuum mode.

FEATURES

BLOWER - Provides a constant volume of air regardless of pressure temperature or barometric pressure when operated at a constant speed.

INLET & DISCHARGE SILENCER - Heavy duty, all welded units provide pulse control and silencing of blower noise.

DRIVE GUARD - V-belt guards are designed for easy removal with open bottom for sanitation. Guard meets OSHA requirements.

INTAKE FILTER - Wire mesh filter element sized for specific inlet air requirement. A rust-proof weathershield is supplied for outdoor applications. (Pressure only.)

MOTOR - Specific horsepower and frame size are based on application requirements. Dual voltage units (230/460/3 PH/60HZ).

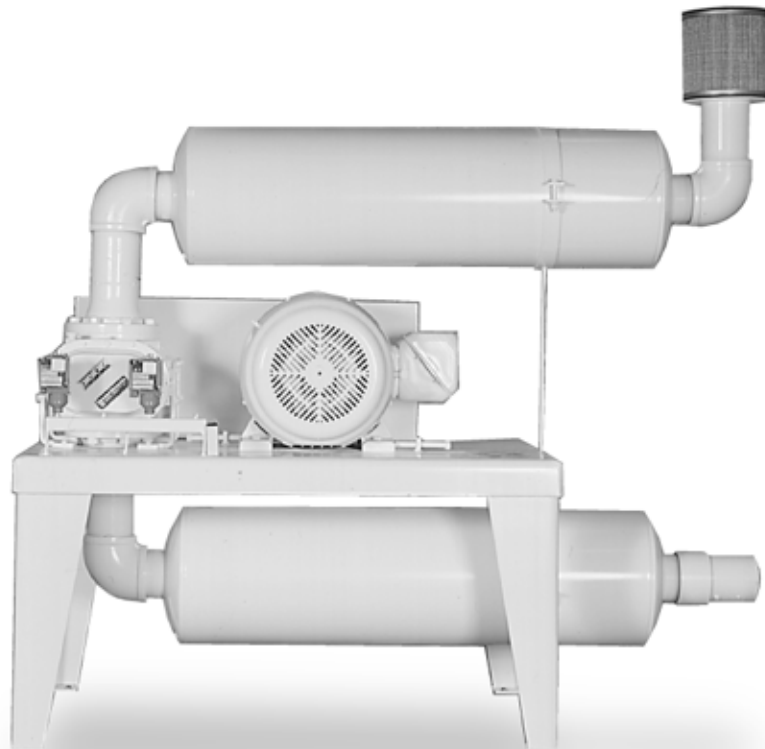
PRESSURE/VACUUM RELIEF VALVES - Installed for protection against high pressure or vacuum. Operates at a desired pressure/vacuum setting or can be manually operated.

CHECK VALVE - Supplied with a full port seatless, quick closure valve with high sealing integrity that is mounted at the silencer outlet and protects against the reverse flow of material. (Pressure and aeration.)

SWITCHES - Two pressure, or one vacuum switch are supplied to signal the control system on high and low pressure and are mounted on blower manifold.

BLOWER BASE - Heavy-duty, one piece welded carbon steel unit.

PRESSURE GAUGE - Liquid filled guage, displays pressure or vacuum. Mounted on blower manifold.



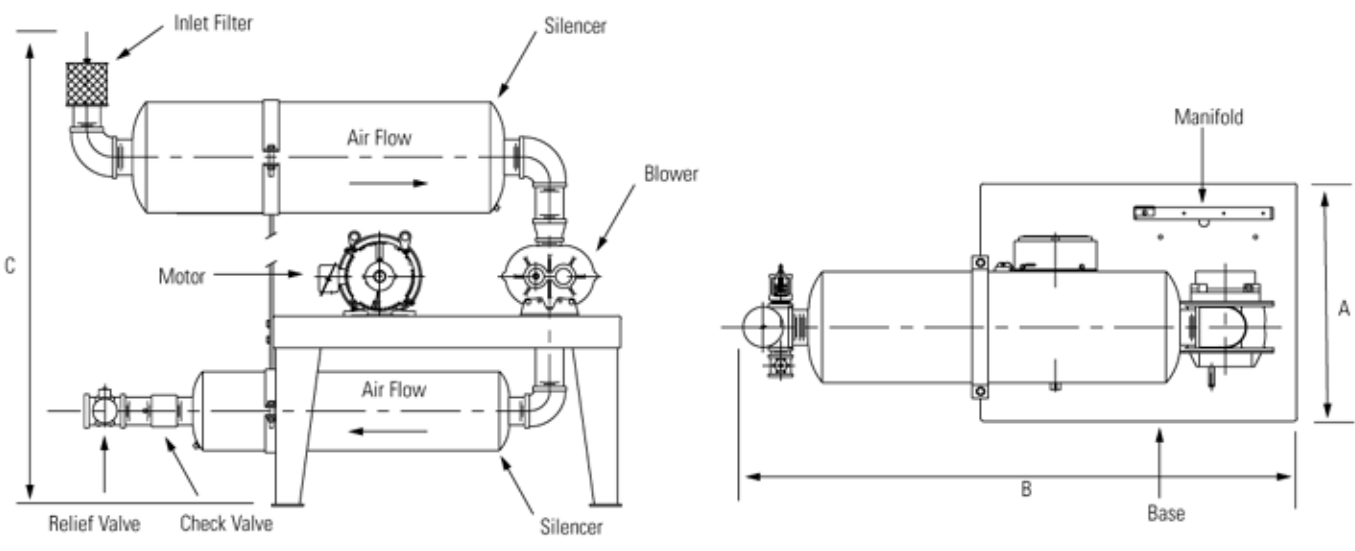
BLOWER PACKAGES

Packaging - Processing
Bid on Equipment
1-847-854-8577
www.bid-on-equipment.com

SHICK TUBE-VEYOR CORPORATION

4346 Clary Boulevard • Kansas City, Missouri 64130 • P (816) 861-7224 • F (816) 921-1901

PRESSURE/AERATION SCHEMATICS



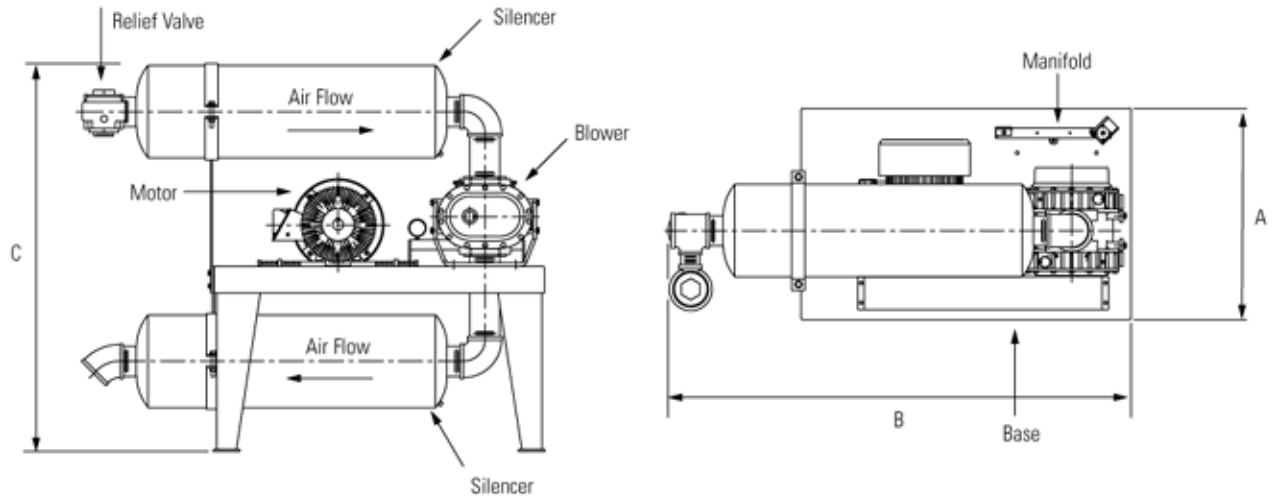
DIMENSIONS - PRESSURE

| PRESSURE | Horsepower | A | A/mm | B | B/mm | C | C/mm |
|----------|------------|----|------|-----|------|-----|------|
| 4606 | 15 | 32 | 813 | 70 | 1778 | 56 | 1422 |
| 4606 | 20 | 32 | 813 | 70 | 1778 | 62 | 1575 |
| 4606 | 25 | 32 | 813 | 77 | 1956 | 66 | 1676 |
| 4606 | 30 | 32 | 813 | 77 | 1956 | 66 | 1676 |
| 4606 | 40 | 36 | 914 | 80 | 2032 | 78 | 1981 |
| 4606 | 50 | 36 | 914 | 80 | 2032 | 78 | 1981 |
| 4609 | 30 | 36 | 914 | 77 | 1956 | 67 | 1701 |
| 4609 | 40 | 36 | 914 | 90 | 2286 | 81 | 2057 |
| 4609 | 50 | 36 | 914 | 97 | 2464 | 89 | 2261 |
| 4609 | 60 | 36 | 914 | 97 | 2464 | 90 | 2286 |
| 4609 | 75 | 40 | 1016 | 97 | 2464 | 90 | 2286 |
| 4612 | 40 | 40 | 1016 | 93 | 2362 | 82 | 2083 |
| 4612 | 50 | 40 | 1016 | 101 | 2565 | 89 | 2261 |
| 4612 | 60 | 40 | 1016 | 105 | 2667 | 90 | 2286 |
| 4612 | 75 | 40 | 1016 | 144 | 3658 | 102 | 2591 |
| 4612 | 100 | 40 | 1016 | 144 | 3658 | 102 | 2591 |
| 6016 | 60 | 50 | 1270 | 146 | 3708 | 102 | 2591 |
| 6016 | 75 | 50 | 1270 | 146 | 3708 | 102 | 2591 |
| 6016 | 100 | 54 | 1372 | 146 | 3708 | 102 | 2591 |

DIMENSIONS - AERATION

| AERATION Blowers for | Typical CFM | Max. Pressure | Horsepower | A | A/mm | B | B/mm | C | C/mm |
|----------------------|-------------|---------------|------------|----|------|----|------|----|------|
| 3 ft. dia. disc. | 70 | 5 | 7.5 | 26 | 650 | 67 | 1702 | 56 | 1422 |
| 4 ft. dia. disc. | 120 | 5 | 5 | 26 | 660 | 67 | 1702 | 56 | 1422 |
| 5 ft. dia. disc. | 170 | 5 | 7.5 | 26 | 660 | 67 | 1702 | 56 | 1422 |
| 6 ft. dia. disc. | 240 | 5 | 10 | 30 | 762 | 68 | 1727 | 56 | 1422 |
| 7 ft. dia. disc. | 380 | 5 | 15 | 36 | 914 | 71 | 1803 | 69 | 1753 |
| 8 ft. dia. disc. | 500 | 5 | 15 | 36 | 914 | 71 | 1803 | 69 | 1753 |

VACUUM SCHEMATICS



DIMENSIONS - VACUUM

| VACUUM | Horsepower | A | A/mm | B | B/mm | C | C/mm |
|--------|------------|----|------|-----|------|----|------|
| 4606 | 10 | 32 | 813 | 70 | 1778 | 51 | 1295 |
| 4606 | 15 | 32 | 813 | 70 | 1778 | 58 | 1473 |
| 4606 | 20 | 32 | 813 | 72 | 1956 | 66 | 1676 |
| 4606 | 25 | 32 | 813 | 82 | 2083 | 64 | 1626 |
| 4606 | 30 | 32 | 813 | 82 | 2083 | 64 | 1626 |
| 4609 | 15 | 36 | 914 | 70 | 1778 | 58 | 1473 |
| 4609 | 20 | 36 | 914 | 82 | 2083 | 62 | 1575 |
| 4609 | 25 | 36 | 914 | 83 | 2108 | 67 | 1701 |
| 4609 | 30 | 36 | 914 | 100 | 2540 | 70 | 1778 |
| 4609 | 40 | 36 | 914 | 100 | 2540 | 73 | 1854 |
| 4612 | 20 | 40 | 1016 | 83 | 2108 | 63 | 1600 |
| 4612 | 25 | 40 | 1016 | 84 | 2134 | 67 | 1701 |
| 4612 | 30 | 40 | 1016 | 103 | 2616 | 70 | 1778 |
| 4612 | 40 | 40 | 1016 | 103 | 2616 | 73 | 1854 |
| 4612 | 50 | 40 | 1016 | 103 | 2616 | 73 | 1854 |
| 6016 | 40 | 44 | 1118 | 147 | 3734 | 81 | 2057 |
| 6016 | 50 | 44 | 1118 | 150 | 3810 | 84 | 2134 |
| 6016 | 60 | 50 | 1270 | 150 | 3810 | 85 | 2159 |
| 6016 | 75 | 50 | 1270 | 150 | 3810 | 85 | 2159 |

NOMINAL CFM RANGE*

| | 250 | 500 | 1000 | 1500 | 2000 |
|-------------|-----|---------|----------|----------|------|
| 4606 | | 178-562 | | | |
| 4609 | | | 260-821 | | |
| 4612 | | | 342-1081 | | |
| 6016 | | | | 643-1897 | |

*For pressure and vacuum applications.

OPTIONS FOR

MOTORS:

Explosion proof, premium efficiency, special voltages and severe duty.

COMPONENTS:

Blower packages can be supplied with a variety of manufacturers components when specified.

TEMPERATURE CONTROL:

Air-to-air or liquid-to-air heat exchangers are utilized to adjust the discharge air temperature to meet the needs of specific materials and systems.

HUMIDITY CONTROL:

Desiccant or refrigerant dryers at the inlet of the blower or moisture separators at the outlet significantly reduce the moisture in the air before the conveyed material is introduced to the air stream.

INLINE FILTER:

Secondary filter protects blowers from conveyed particulates in vacuum application.

TEMPERATURE SWITCH:

Mounted at the blower outlet and provides high temperature indication.

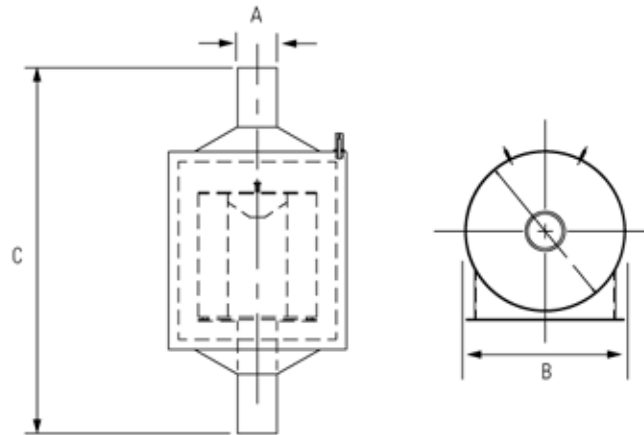
PRESSURE TRANSDUCER:

Reliable measurement of pressure with 4-20mA output signal. Suitable for long cable runs in electrically noisy environments.

NOTES:

1. Standard motors are TEFC. Standard electrical components are NEMA 4.
2. Discharge piping assembly shipped to match requested line connection.
3. All dimensions are nominal.

INLINE FILTER SCHEMATICS



DIMENSIONS FOR INLINE FILTER

| Max. CFM | A | A/mm | B | B/mm | C | C/mm |
|----------|---|------|----|------|----|------|
| 400 | 3 | 76 | 14 | 356 | 30 | 762 |
| 750 | 4 | 102 | 16 | 406 | 32 | 813 |
| 1050 | 5 | 127 | 18 | 457 | 37 | 940 |
| 2500 | 6 | 152 | 30 | 762 | 62 | 1575 |

HEADQUARTERS:

Shick Tube-Veyor Corporation
 4346 Clary Boulevard, Kansas City, MO 64130
 P (816) 861-7224 / F (816) 921-1901

Shick Tube-Veyor Asia Pacific PTE LTD
 32 Ang Mo Kio Industrial Park 2
 #02-03 Sing Industrial Complex, Singapore 569510
 Tel: (65) 4824600 Fax: (65) 4818255

REPRESENTED BY:

Information on this page is subject to change without notice. For additional information on this and other Shick Tube-Veyor products and services, please call Shick directly or your local representative.

