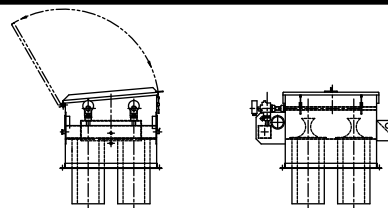


THE PNEUMATIC CONVEYING PEOPLE

# SEMCO-TBS



TO CONTACT A SEMCO-TBS REPRESENTATIVE, PLEASE CALL 1-800-730-5859  
OR VISIT US ONLINE AT [WWW.SEMCOTBS.COM](http://WWW.SEMCOTBS.COM) AND [INFO@SEMCO-TBS.COM](mailto:INFO@SEMCO-TBS.COM)

## CARTRIDGE BIN VENT

OUR LOW PROFILE, COST EFFECTIVE AND HIGHLY EFFICIENT CARTRIDGE BIN VENT IS DESIGNED FOR SILO DUST CONTROL

### OUTSTANDING FEATURES:

- QUICK ACCESS FOR TOP CARTRIDGE REMOVAL EXTERNAL TO THE FILTER HOUSING
- LOW PROFILE DESIGN PROVIDES EASE OF MAINTENANCE
- MATERIALS OF CONSTRUCTION ARE CARBON STEEL, ALUMINUM OR STAINLESS STEEL
- STRONG, LIGHTWEIGHT COVER

### OPTIONS AVAILABLE:

- SOLID STATE TIMER IN A NEMA ENCLOSURE
- WIDE RANGE OF CARTRIDGE FILTER MEDIA
- DIFFERENTIAL PRESSURE GAUGE OR SWITCH
- HEPA FILTER
- EXHAUST / INDUCED DRAFT FAN



Packaging - Processing

**Bid on Equipment**

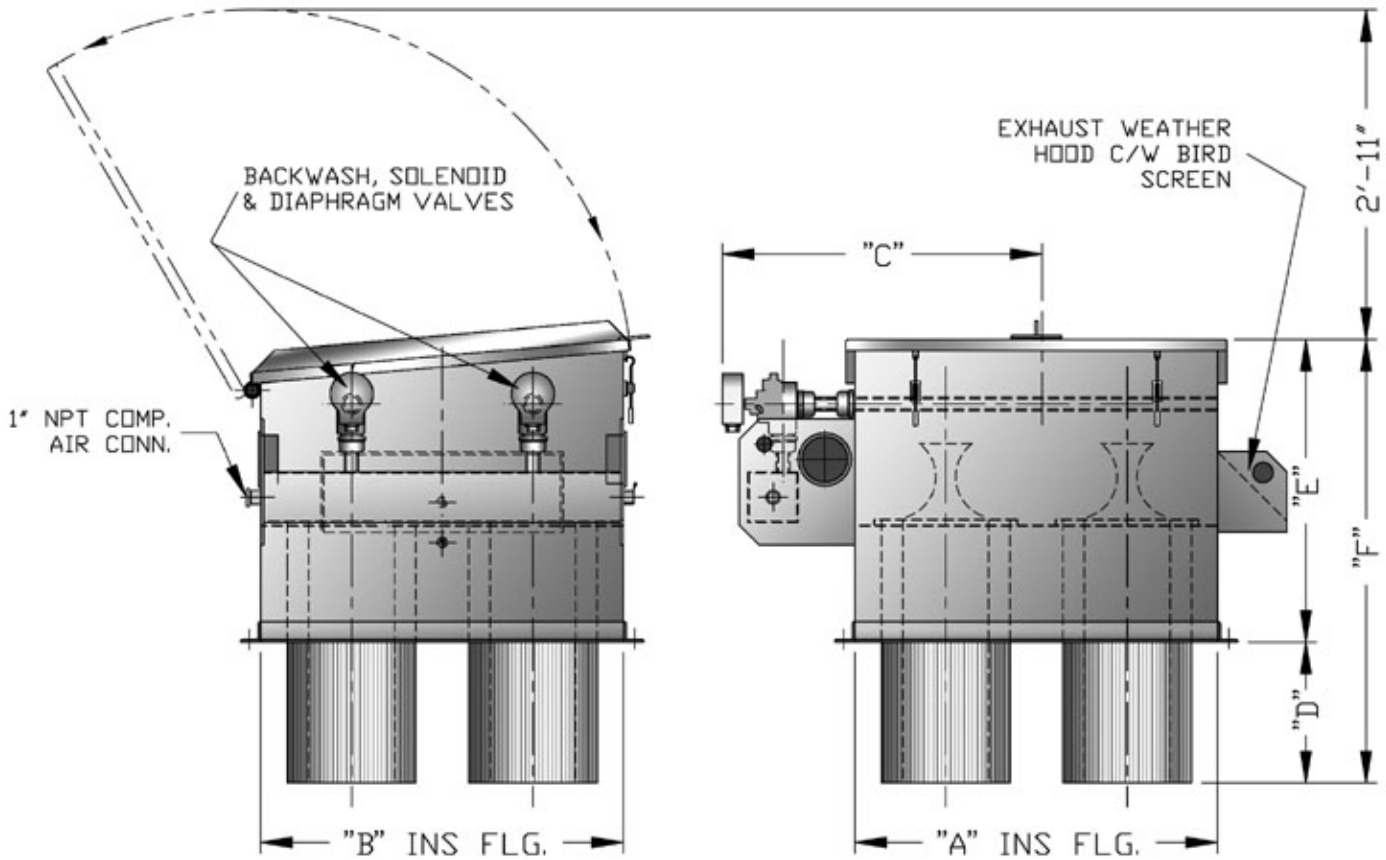
1-847-683-7720

[www.bid-on-equipment.com](http://www.bid-on-equipment.com)



WE OFFER A COMPLETE LINE OF COMPONENTS FOR BULK MATERIAL HANDLING SYSTEMS WHICH INCLUDES: STORAGE SILOS, ROTARY VALVES, BLOWER PACKAGES, DIVERTER VALVES AND DUST COLLECTORS. DETAILED BULLETINS ON THESE AND OTHER COMPONENTS ARE AVAILABLE UPON REQUEST OR VISIT [WWW.SEMCOTBS.COM](http://WWW.SEMCOTBS.COM)

# CARTRIDGE BIN VENT



FILTER SIZE (SQ. FT.)	DIMENSIONAL DATA						TECHNICAL DATA		
	A	B	C	D	E	F	NO. OF CART.	SCFM 80- 120 PSIG	WEIGHT LB (KG) CS
DCC200	36 (914)	36 (914)	22 (559)	15 (381)	27 (686)	42 (1067)	4	6	400 (181)
DCC280	36 (914)	36 (914)	22 (559)	15 (381)	27 (533)	42 (1067)	4	6	400 (181)
DCC300	36 (914)	54 (1372)	40 (1016)	24 (610)	29 (737)	53 (1346)	6	6	455 (206)
DCC420	36 (914)	54 (1372)	40 (1016)	24 (610)	29 (737)	53 (1346)	6	10	455 (206)
DCC450	54 (1372)	54 (1372)	40 (1016)	25 (635)	28 (711)	53 (1346)	9	10	455 (206)
DCC630	54 (1372)	54 (1372)	40 (1016)	25 (635)	28 (711)	53 (1346)	9	10	455 (206)

DCCXXX WHERE XXX IS SQUARE FEET FILTER AREA  
 ALL DIMENSIONS SUBJECT TO CHANGE WITHOUT NOTICE