

**END-OF-LINE  
ROBOTIC SOLUTIONS**



The Schneider Packer-Palletizing Cell is ideal for combining case packing and palletizing in one location. Cases are automatically erected, then loaded with product, coded and palletized; all utilizing one robotic arm.

- **Fast, reliable, and highly flexible FANUC robot**
- **Wide range of work cell configurations to handle single and multiple lines**
- **Customized End Of Arm Tooling (EOAT) specifically designed to handle your products reliably**
- **Runs cases, trays or bags**
- **Highly configurable: Options for slip/tier sheet handling, pallet handling, labeling and automatic guided carts**

- **Small Footprint**
- **Fast Changeover**
- **Efficient**
- **Reliable**

## END OF LINE ROBOTIC SOLUTIONS

### Floor Plan Options

The illustration below right represents a typical floor plan with a 1 in – 1 out configuration with a manual pallet station. Schneider configures each system to meet your specific floor plan and product requirements.

### Basic Operation

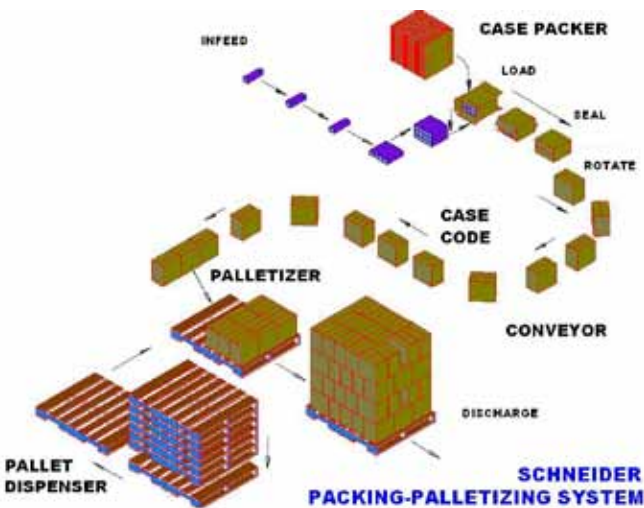
An empty pallet enters the cell. Shown is the manual pallet station. A pallet dispenser or magazine may be utilized. The system is also available with an optional over/under pallet conveyor.

Product is delivered to the case packer infeed, collated and automatically loaded by the robot into the case. The loaded case cycles forward to the next station where the top and bottom flaps are folded and tightly sealed.

Fully loaded and sealed cases are presented to the robot. Once sufficient product and an empty pallet are available, the robot will pick product from the infeed and place it onto the appropriate pallet in the appropriate pallet pattern.

Once a unit load is completed, it is discharged. In the meantime, another empty pallet has been transferred onto the load station and the robot can continue to palletize. The process repeats.

### Product Flow



### Specifications

**Pallet Type:**  
GMA, CHEP, Metric

**Safety:**  
Meets ANSI/PMMA B155.1 safety standards

**End of Arm Tooling (EOAT):**  
Vacuum or gripper (determined by product)

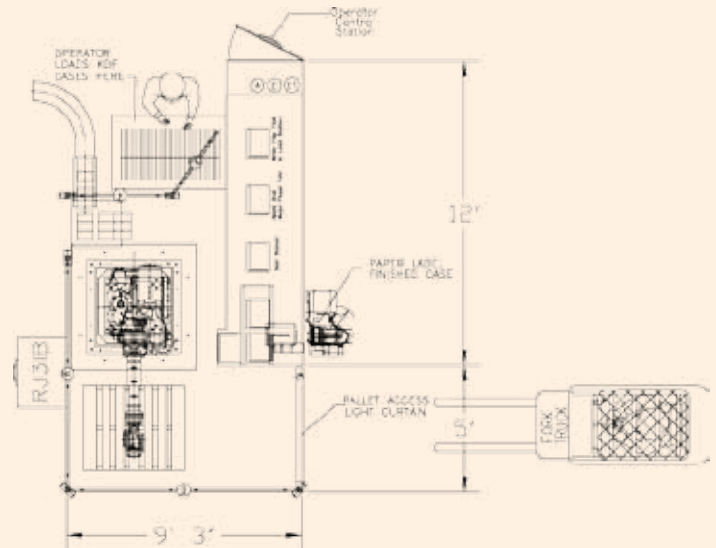
**Power:**  
480 VAC  
3 phase 50/60 hertz

**Maximum rate:**  
80 PPM - depending on product size and weight

**Visual Display:**  
One (1) Allen Bradley 600 Color Touchscreen

**Construction:**  
Painted Carbon Steel

### Typical Floor Plan 1 In - 1 Out with manual pallet handling



**End Of Arm Tooling (EOAT) Options** Include vacuum, mechanical, fork, or a combination of these with or without slip sheet handling