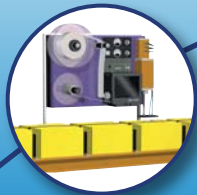
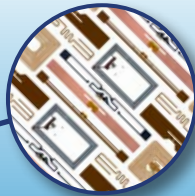


# M84Se RFID Series

*Read, Write, Verify & Print Smart Labels and Tags*



Designed for  
Print/Apply Systems



Multi-Protocol RFID  
Capability



RFID Counters



XML Enabled



## Streamlined Features

- RFID Enabled
- Plug-In Interfaces
- Fast, Accurate & Cost-Effective
- Built to the Highest Quality
- High Speed Throughput
- Auto-Calibration for New Inlay Styles
- "Print-Write-Print" for Out-of-Spec Tags

## Industry Verticals

- Aerospace
- Automotive
- Distribution
- Manufacturing
- Logistics
- Government
- Health Care
- Transportation
- Pharmaceutical

## Industry Applications

- Compliance Labeling
- Warehouse Logistics
- Pallet Tracking
- Retail Labeling
- Product Authentication
- Cross-Docking
- Shipping Labels
- Closed-Loop Tracking

## General Specifications

## M84Se RFID Series

PRINTER MODEL		M8459Se	M8460Se	M8465Se	M8485Se	M8490Se
<b>PRINT SPECIFICATIONS</b>						
Print Method		Direct Thermal	Direct Thermal/Thermal Transfer			
Print Resolution		203 dpi (8 dots/mm)		305 dpi (12 dpmm)	203 dpi (8 dpmm)	305 dpi (12 dpmm)
Max. Print Speed		5"/s (125mm/s)	8"/s (250mm/s)	8"/s (250mm/s)	12"/s (300mm/s)	8"/s (250mm/s)
Max. Print Area	Width	4.4" (112mm)	6" (152mm)		5" (128mm)	4.4" (112mm)
	Length	49.2" (1249mm)		32.8" (833mm)	49.2" (1249mm)	32.8" (833mm)
<b>MEDIA SPECIFICATIONS</b>						
Sensor Type		Transmissive sensor for die cut labels & tags. Reflective sensor for use with preprinted sensing marks. Automatic, programmable setting of top form.				
Media Type		Die cut labels, plain paper facestock and synthetics. Maximum unwind torque: 8 ft./lbs.				
Back Feed		Adjustable, ± 10" (255mm)				
Media Size	Width	Max. 5.27" (134mm) Min. 1" (25mm)	Max. 6.5" (165mm) Min. 2" (53mm)	Max. 5.27" (134mm) Min. 1" (25mm)		
		Min. 4" (102mm) with RFID Tag				
	Length	Min. 0.24" (6mm) - Minimum label length at print speeds greater than 6 ips is 1 inch Min. 4" (102mm) with RFID Tag				
	Thickness	0.002" – 0.0106" (0.06 mm – 0.268 mm)				
Ribbon		NA	Max. 6.5" (165mm) W x 1968' (600m) L Min. 2.1" (53mm) W, Face-In Wind	Max. 5.25" (133mm) W x 1968' (600m) L Min. 1.6" (39.5mm) W, Face-In Wind		
<b>FONT / SYMBOLOGIES</b>						
RFID Formats		<b>UHF (Ultra-High Frequency) EPC Class 1; EPC Class 1, Gen 2; EPC Class 0/0+</b>				
Font		Bitmap - 12 proportional, mono-spaced and outline fonts (Code table 858). Internal CG Triumvirate & CG Times fonts scalable from 2 to 99 points. Optional downloaded TrueType fonts.				
Barcode Symbologies	Linear	UPC-A, UPC-E, EAN-8, EAN-13, Code 39, Code 93, Code 128, Codabar, MSI, Bookland, Industrial 2/5, Interleaved 2/5, Matrix 2/5, Postnet, UCC/EAN 128, RSS Composite				
	2-D	PDF417, Micro PDF417, Truncated PDF417, Maxicode, Data Matrix, QR Code				
<b>COMMUNICATION INTERFACE</b>						
Interfaces		RS232 Serial (up to 57.6k bps), IEEE1284 Parallel (ECP), 10/100BaseT/TX Ethernet (Wired), Wireless (802.11g), USB, RS422/485				
External Connector		Ext. (Applicator I/F): 14-pin Amp				
<b>MEMORY</b>						
Memory		16 MB Standard RAM, 2 MB Standard Flash, Optional 1 MB PCMCIA, Optional 6 MB Flash (Total)				
<b>OPERATING CHARACTERISTICS</b>						
Power Requirements		115V/220V (± 10%), 50/60 Hz (± 1%) - Auto-switching				
Dimensions		9.7" W (245mm) 16.1" D (408mm) 11.7" H (298 mm)	9.7" W x 17.9" D x 11.7" H 245mm W x 455mm D x 298mm H	9.7" W x 16.1" D x 11.7" H 245mm W x 408mm D x 298mm H		
Weight		25 lbs. (11.34 kg)	27.5 lbs. (12.5 kg)	25 lbs. (11.34 kg)		
Agency Certifications:		CE, UL, CSA, TÜV, FCC Class A				
<b>OTHER FEATURES</b>						
Standard Real Time Clock, Optional Opposite Hand Model						

Brand or product names are trademarks and registered of their respective companies.

**SATO America, Inc.**

10350-A Nations Ford Road, Charlotte, NC 28273

Phone: (704) 644-1650 Fax: (704) 644-1662

E-mail: satosales@satoamerica.com

© 2008 SATO America, Inc. All rights reserved. Rev. 06/08