

## COMPACT ECONOMICAL THERMAL SOLUTIONS



# CX Series Printers

The desktop CX thermal printers are ideal for a range of low-volume applications, including:

-  **Manufacturing**
-  **Shipping/Receiving**
-  **Asset Tracking**
-  **Compliance Labeling**
-  **Retail**
-  **Healthcare**

### Economical Solution

The CX Series offers a low-cost printing solution for low-volume applications. Speed of 4 inches-per-second and feature-rich design will satisfy a wide spectrum of requirements.

### Compact Design

Designed for convenience, the CX Series offers compact design for real-estate-sensitive applications. It offers many advanced features, simplifying loading and operation.

### Media Capacity

The CX Series is designed to accommodate a full 5" OD roll of media, reducing downtime and simplifying operation.

Performs best with  
**Techno**   
T H E R M  
Labels & Ribbons



THE BEST PERFORMING  
COMPACT

# SPECIFICATIONS

## CX400/410

Packaging - Processing  
**Bid on Equipment**

1-847-683-7720

[www.bid-on-equipment.com](http://www.bid-on-equipment.com)

### Out of the box ... and ready to go!

Complete with:

- Labeling Software
- Parallel Printer Cable
- Starter Roll of Media & Ribbon
- Power Supply
- User's & Programmer's Guide



<b>Printing Method</b>	Thermal Transfer/Direct Thermal	
<b>Print Resolution</b>	203 dpi (8 dpmm)	305 dpi (12 dpmm)
<b>Print Speed</b>	4 ips (100 mm/second)	3 ips (75 mm/second)
<b>Media Width</b>	Max. 4.69" (119 mm) /Min 0.87" (22 mm)	
<b>Max. Print Width</b>	4.1" (104 mm)	4.25" (106 mm)
<b>Min. Print Length</b>	0.87" (22 mm)	
<b>Max. Print Length</b>	50" (1270 mm)	25" (635 mm)
<b>Max. Ribbon Size</b>	4.4" (110 mm) W x 426 ft. (130 m) L w/Standard Wax Ribbon; CSO (coated side out)	
<b>Dimensions</b>	7.76" W x 10.2" D x 6.5" H (197 mm W x 257 mm D x 164 mm H)	
<b>Weight</b>	8.09 lbs (3.67 kg)	

#### Memory:

2 MB DRAM  
2 MB Flash ROM  
4 MB or 6 MB Optional Flash

#### Processor:

32-BIT

#### Media:

Roll-fed or fan-fold, die-cut or continuous direct thermal or thermal transfer labels, synthetics, and tag stock with or without black mark, gap, or notch.

Max. Caliper: 0.01" (0.254 mm)  
Max. Roll Diameter: 5" (127 mm)  
Core Diameter: 0.75" (19.5 mm)  
Wind: Face-In

#### Ribbon:

Max. Roll Diameter: 1.41" (36 mm)  
Min. Core Diameter: 0.75" (19 mm)  
Wind: CSO (coated side out)

#### Sensing:

Adjustable transmissive sensor for gap.  
Reflective sensor for black mark. Automatic, programmable setting of top of form. Label present sensor - optional with label dispenser.  
Ribbon-out sensor

#### Interface:

- Serial RS232 (up to 38.4k bps)
- Centronics Parallel

#### Barcode Symbolologies:

**Elementary:** UPC-A, UPC-E, EAN-8, EAN-13, Code 39, Code 93, Code 128, Codabar, MSI, Bookland, Industrial 2/5, Interleaved 2/5, Matrix 2/5, Postnet, UCC/EAN 128  
**2-Dimensional:** PDF417, Maxicode

#### Fonts:

Bitmap - 12 proportional, mono-spaced and outline fonts (Code table 858).

#### Barcode & Font Formatting:

360° rotation of barcodes and text, character expansion horizontally and vertically, sequential numbering, form overlay for high-speed editing of complex formats.

#### Graphic Support:

Printing & storage of .PCX, .BMP format, SATO Hex/binary

#### Software:

Windows® Drivers (Windows® 95, 98, ME, NT4.0, 2000, XP)  
"Label Gallery Free" - Label Software  
Printer Utilities

#### Electrical Requirements:

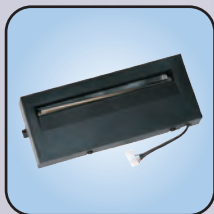
100-120VAC/200-240VAC, 50/60 Hz (± 1%)  
Agency Certifications: CE, UL, CSA, TÜV

#### Environmental Requirements:

Operating: 40° to 100°F (4° to 38°C)  
30-80% RH, non-condensing  
Storage: -4° to 122°F (-20° to 50°C)  
Max. 85% RH, non-condensing  
ESD: 8kV

#### Optional Features:

Label Cutter (factory installed), Label Dispenser (factory installed), 220 V Power Supply, External USB, External Ethernet, Memory Expansion, Keyboard



Cutter



Label Gallery



Keyboard

**SATO**  
DCS & Labeling Worldwide

#### SATO America, Inc.

10350-A Nations Ford Road, Charlotte, NC 28273  
Phone: (704) 644-1650 Fax: (704) 644-1659  
E-mail: [satosales@satoamerica.com](mailto:satosales@satoamerica.com)

[www.satoamerica.com](http://www.satoamerica.com)