

ENGINEERING STANDARDS

Rosedale Products, Inc.
3730 West Liberty Road
Ann Arbor, MI 48103

IOM
7_7_1 Multi Cart 150.wpd
n:\iom\



Issue Date: 27MAR96
Revision: A
Revision Date: 30May2003

Specification No.
7.7.1
PAGE: 1 of 6

INSTALLATION, OPERATION, & MAINTENANCE MANUAL

INSTALLATION, OPERATION AND MAINTENANCE MANUAL

ROSEDALE PRODUCTS, INC.



MULTI-CARTRIDGE

150 PSIG RATED CARTRIDGE FILTER UNIT

Table of Contents

I.	Installation	2
II.	Operation	3
III.	Spare Parts List	4
IV.	Spare Parts Diagram	5

ENGINEERING STANDARDS

Rosedale Products, Inc.
3730 West Liberty Road
Ann Arbor, MI 48103

IOM
7_7_1 Multi Cart 150.wpd
n:iom\



Issue Date: 27MAR96
Revision: A
Revision Date: 30May2003

Specification No.
7.7.1
PAGE: 2 of 6

INSTALLATION, OPERATION, & MAINTENANCE MANUAL

I. Installation

Please remove all shipping and crating materials carefully. Be sure to remove the plugs from the inlet and outlet openings. Dispose of all crating materials safely.

Position the Multi-Cartridge Filter unit into its proper location, secure the (4) support legs to the floor or platform. Provided on each support pad is a mounting hole to allow positive attachment to the base.

There is a 1/2" NPT port vent on the cover of your Multi-Cartridge Filter unit. This port can remain plugged or used for a pressure gauge or special fitting as your application requires.

Located just above the cartridge plate is a 1" NPT dirty side drain. Located just below the cartridge plate is another 1" NPT port, for clean side drainage.

Some installations require electrical grounding of all equipment, be sure to provide adequate grounding where necessary.

After completing installation be sure to double check connections for integrity. Your Multi-Cartridge Filter unit has been factory pressure tested leak free, therefore, any seepage problems usually occur from improper installation connections.

You are now ready to install the filter cartridge element. Remove cover by loosening closure assemblies sufficiently to allow them to swing free. Turn handwheel on the top of the housing to lift cover clear of bottom seal ring. Swing cover away from housing to gain access to filter cartridges.

The following procedures are for SOE or DOE cartridges utilizing V-Post installation. (Consult Cartridge Manufacturer for other installation applications.)

Insert centering V-post, tabbed end first, into cartridge cup located at the bottom of the unit. Place the element over centering V-post. Position the element over the center of the bottom retainer cup and press firmly into place. Place the retainer spring-cup assembly on top of the element and seat it against the cartridge. When the cover is closed, the perforated plate in the cover will compress the spring assemblies and seal the cartridges.

Before replacing cover assembly, inspect cover seal gasket (replacing as necessary). Close cover and alternately tighten the closure assemblies evenly to ensure a leak proof seal between cover and housing body. The recommended torque value for Multi-Cartridge Filter unit closure assemblies is 160 -240^{ft-lbs}.

Your Rosedale Multi-Cartridge Filter unit is now ready for operation!

ENGINEERING STANDARDS

Rosedale Products, Inc.
3730 West Liberty Road
Ann Arbor, MI 48103

IOM
7_7_1 Multi Cart 150.wpd
n:\iom\



Issue Date: 27MAR96
Revision: A
Revision Date: 30May2003

Specification No.
7.7.1
PAGE: 3 of 6

INSTALLATION, OPERATION, & MAINTENANCE MANUAL

II. Operation

Filter System Start-Up Procedure:

Prior to turning on the flow to the inlet service, please make the following checks:

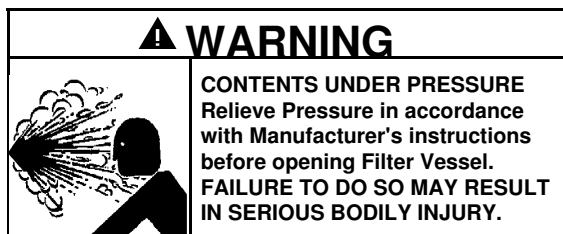
1. Check inside filter unit to be sure cartridge element are in housing and do not require cleaning or replacement. If necessary install a clean cartridge element.
2. Check that filter unit cover is securely fastened to housing. You are now ready to open the flow to the inlet service line. Slowly open the inlet service line approximately 25% of normal operational flow (open slowly as not to displace cartridge element inside the housing). After filter unit is pressurized and vented, slowly open outlet service line unit valve until completely open. Complete opening of inlet service line until desired flow rate is reached.

Once the desired service flow has been established, the filter will operate efficiently until dirty. For Spiral Wound Cartridges it is recommended no more than *30 PSI Differential Pressure* through the filter be obtained. (Consult Cartridge Manufacturer for DP limits). Operating the filter unit with a high differential may cause cartridge elements to rupture and/or cause damage to filter system and downstream equipment.

To prevent excessive drop through the filter unit, regular inspection of the filter media is required. Monitoring of differential pressure through the housing can be utilized as a means of determining whether or not the filter media needs cleaning or replacement.

When it becomes necessary to clean or replace the cartridge element, follow the procedure outlined below:

1. First close the flow from the inlet service line.
2. Close the flow to the outlet service line. (In some applications closing flow to outlet is not required.)
3. Relieve the pressure from the filter unit.



4. Drain housing sufficiently, use dirty drain port, to prevent bypass of unfiltered fluid. (Level to be below dirty drain and top of cartridge plate)
5. Remove cover by loosening closure assemblies sufficiently to allow them to swing free. Turn handwheel on the top of the housing to lift cover clear of bottom seal ring. Swing cover away from housing to gain access to filter cartridges.

ENGINEERING STANDARDS

Rosedale Products, Inc.
3730 West Liberty Road
Ann Arbor, MI 48103

IOM
7_7_1 Multi Cart 150.wpd
n:\iom\

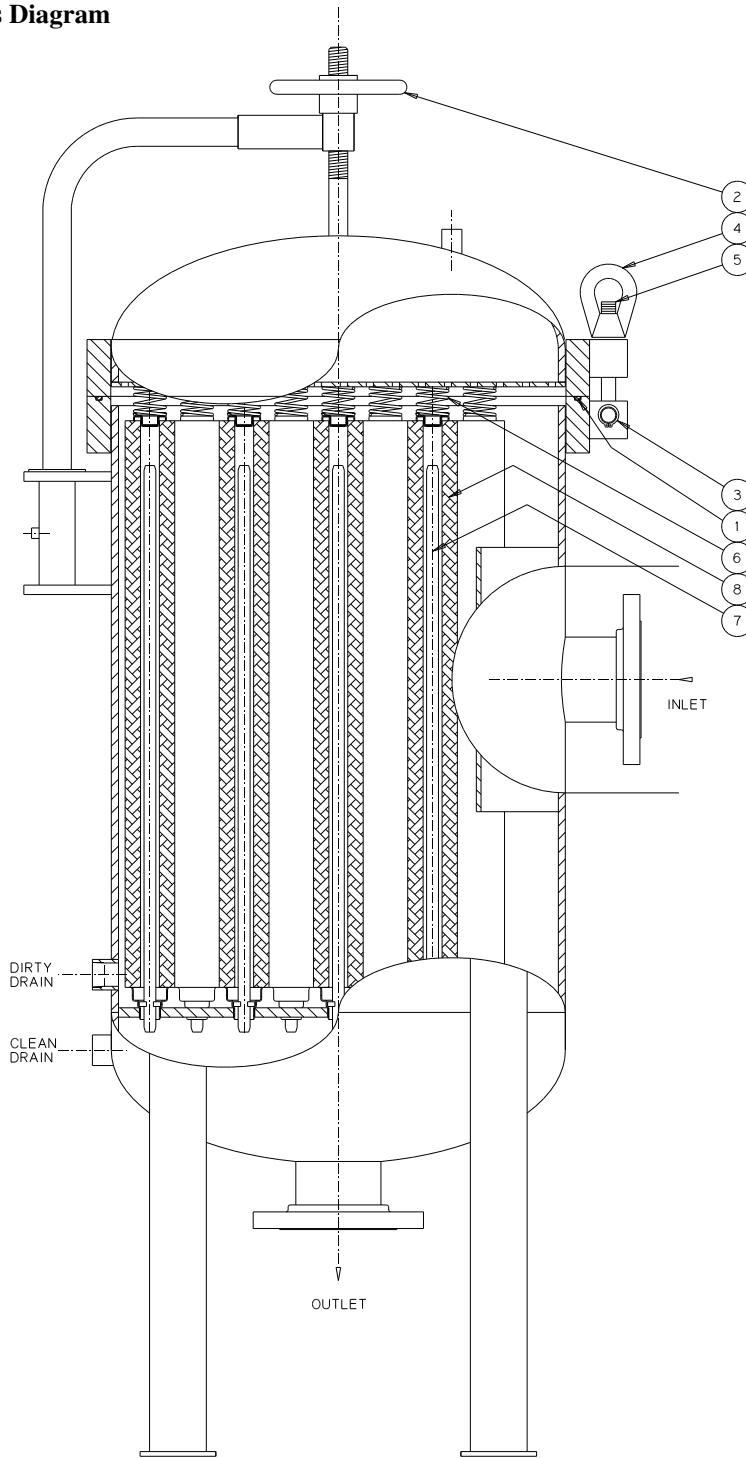


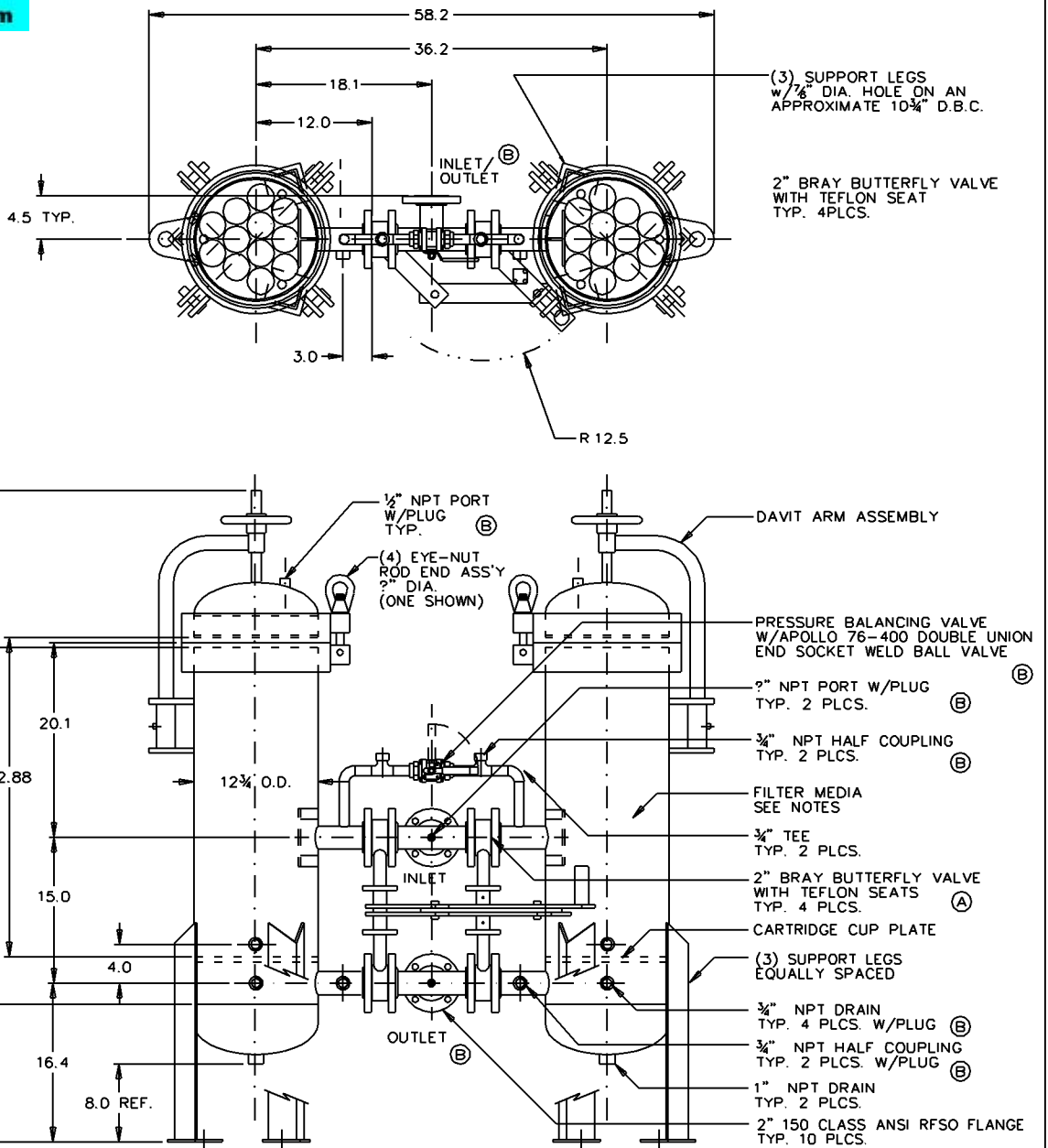
Issue Date: 27MAR96
Revision: A
Revision Date: 30May2003

Specification No.
7.7.1
PAGE: 5 of 6

INSTALLATION, OPERATION, & MAINTENANCE MANUAL

IV. Spare Parts Diagram






NOTES:

1. CONSTRUCTION PER ASME CODE, SECTION VIII, DIV. 1 LATEST EDITION AND ADDENDA
2. MATERIALS OF CONSTRUCTION ALL WETTED PARTS TO BE 304 STAINLESS STEEL ALL WELDED ATTACHMENTS TO BE 300 SERIES S.S. CLOSURE ASSEMBLIES TO BE SWING BOLT TYPE
3. DESIGN PRESSURE 150 PSI
4. DESIGN TEMPERATURE 400°F
5. FINISH NOTE ELECTROPOLISH FINISH (A)
6. FILTER MEDIA 30" LG. FILTER CARTRIDGES 12 PER HOUSING
7. GASKET MATERIAL TEFLON SOLID WHITE
8. MODEL NUMBER 1212302F1150STSWDOE-VP-C

B	REVISED PER CUSTOMER MARK UPS	RF	17JAN00
A	ADDED NOTES	RF	17DEC99
LET.	REVISION	BY	DATE

DO NOT SCALE DRAWING	EWR	MATERIAL	SEE NOTE	TITLE
UNLESS OTHERWISE SPECIFIED DIMENSIONS ARE IN INCHES	ASS'Y REF.			DUPLEX MODEL 12 CART PURE D1212302F1150STSWDOE-VP-C
TOLERANCES		DR. RF		
3 PLACE DEC ±	2 PLACE DEC ±	DATE	15DEC99	
Ø/ØH ±	ANGULAR ±	CH.		
HIGHER SURFACES	REMOVE ALL EDGES	DATE		
	FILET RADIUS	SCALE	?	



ROSEDALE PRODUCTS, INC.
 P.O. BOX 1085
 ANN ARBOR, MI 48106

ITEM NO.	F-518A&B	SHEET	1 of 1
DRAWING NO.	C17996.10	REV.	B