

Modular standard power units

RE 51013/04.06
Replaces: 11.02

1/26

Type ABSKG

Tank capacity 20, 40 and 60 litres



abskg

Table of contents

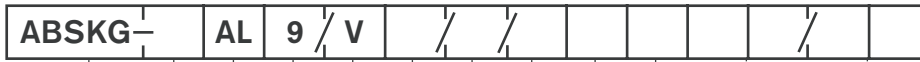
Contents	Page
Features	1
Ordering code	2 and 3
Control variants	3
Selection table: Basic power unit	4 and 5
Control variants	7
Technical data	8 and 9
Characteristic curves	9
Circuit diagrams	9 to 11
Unit dimensions	12 to 20
Options: Level switch	21
Oil drip tray	22
Hand pump	23
Thermostat	24
Accessories	24 and 25

Feature

- Stable aluminium tank
- Modular design
- Compact power unit design
- Individual adjustments possible
- Versatile use
- Additional options possible
- Clearly arranged, maintenance-friendly structure

Information about available spare parts:
www.boschrexroth.com/spc

Ordering code



Power unit = ABSKG type ABSKG	
Tank capacity	
20 litres = 20	
40 litres = 40	
60 litres = 60	
Tank material	
Aluminium = AL	
AB standard tank	
AB 40-09 = 9	
Type of attachment: Pump/motor group	
Pump power unit mounted vertically = V	
Pump type / size (see selection tables on pages 4 and 5)	
Gear pump, external toothing, < 4 cm ³ = PLP...	
Gear pump, external toothing, ≥ 4 cm ³ to RE 10089 = AZPF...	
Gear pump, internal toothing, to RE 10213 = GF2...	
Radial piston pump to RE 11263 = R4...	
Motor frame size (see selection table on pages 4 and 5)	
Basic power unit type	
Without air heat exchanger = no code	
With air heat exchanger type PTK to RE 50092 = L	

Circuit diagram code (determined after receipt of order)	
013	A487 Example
Circuit diagram no.	
Code for sales unit	
Options	
N =	Level switch
O =	Oil drip tray
P = ¹⁾	Hand pump
T = ¹⁾	Thermostat
Number of controls	
1 to 8 =	For control variants 6 and 7 (for control variant 7, a control is required for the accumulator charging valve)
Control variant (see pages 3 and 6)	
1 =	Pressure control unit to AB 42-15
6 =	Subplate AB 42-09GG...DMAB
7 =	Subplate AB 42-09GG...DMAB with accumulator charging circuit

¹⁾ only with tank capacity of 40 and 60 litres



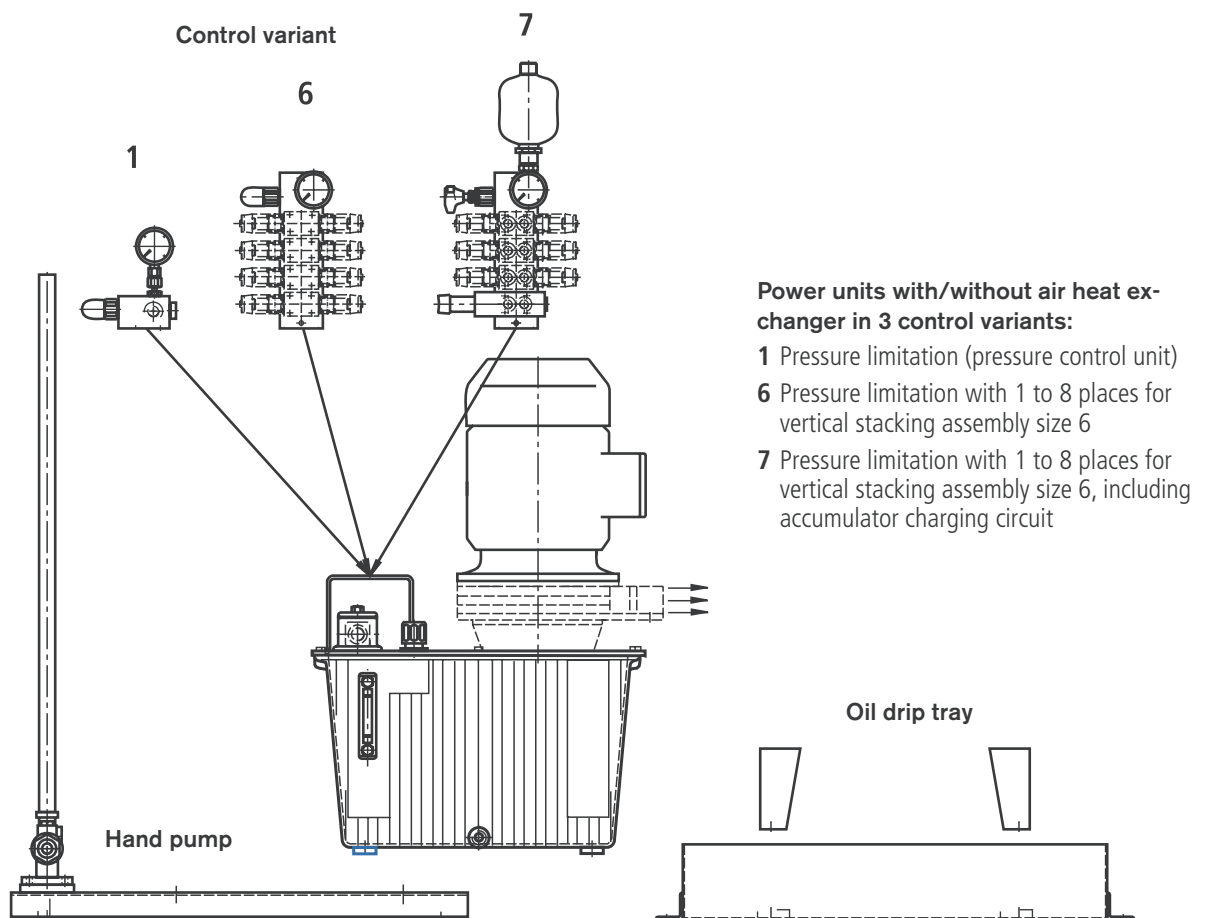
Order note:

For power units with air heat exchanger, smoothly switching valves according to RE 23183 should be preferably used for reducing pressure peaks in the tank line .

Order example of final power unit: Combination options – contents

ABSKG-40 AL9/VGF2-011/100L/63NT/013A487	Final power unit
Material no. R900939395 ABSKG-40AL9/VGF2-011/100L-4-A1/	Basic power unit according to selection table on page 4
Material no. R900868010 ABPLR-06GG03DMAB-100S	Subplate control variant 6 according to selection table on page 6
Valve	Valves of size 6 see catalogue RE 00112-02
Valve	
Valve	
Level switch ..N.. Oil drip tray..O.. Hand pump..P.. Thermostat..T.. (AB31-32)	Options according to selection table
Clogging indicator for return line filter Fuß AB 40-09	Accessories

Power unit structure



Selection table for basic power unit with tank size 20 (type ABSKG-20), attachment type V

built-on pump power units with standard motors to AB42-30

Pump	$q_{V \max}$ at 1450 min ⁻¹ in l/min	p_{\max} in bar	Power P at 50 Hz in kW	El. motor frame size	Material no. without heat exchanger	Weight in kg	Material no. with heat ex- changer	Weight in kg
PLP 10.2	2.9	60	0.37	71-4-A1	R900939337	30	-	-
		125	0.75	80-4-A1	R900939338	34	-	-
		250	1.5	90L-4-A1	R900939339	40	R900939435	43
PLP 10.3,15	4.5	40	0.37	71-4-A1	R900939340	30	-	-
		80	0.75	80-4-A1	R900939341	34	-	-
		160	1.5	90L-4-A1	R900939342	40	R900939436	43
		235	2.2	100L-4-A0	R900939343	49	R900939437	52
AZPF-004	5.8	25	0.37	71-4-A1	R900938914	30	-	-
		60	0.75	80-4-A1	R900938916	34	-	-
		120	1.5	90L-4-A1	R900938926	40	R900939438	43
		250	3	100L-4-A1	R900938927	49	R900939439	52
AZPF-005	7.9	50	0.75	80-4-A1	R900938928	34	-	-
		90	1.5	90L-4-A1	R900938929	40	R900939440	43
		185	3	100L-4-A1	R900938930	49	R900939441	52
		250	4	112M-4-B0	R900938931	56	R900939442	59
AZPF-008	11.8	55	1.5	90L-4-A1	R900938932	40	R900939443	43
		120	3	100L-4-A1	R900938934	49	R900939444	52
		160	4	112M-4-B0	R900938935	56	R900939445	59
R4-1,6-700	2.1	315	1.5	90L-4-A1	R900938938	44	R900939446	47
R4-3,15-500	4.8	300	3	100L-4-A1	R900938939	54	R900939447	57

Selection table for basic power unit with tank size 40 (type ABSKG-40), attachment type V

built-on pump power units with standard motors to AB42-30

Pump	$q_{V \max}$ at 1450 min ⁻¹ in l/min	p_{\max} in bar	Power P at 50 Hz in kW	El. motor frame size	Material no. without heat exchanger	Weight in kg	Material no. with heat ex- changer	Weight in kg
PLP 10.2	2.9	125	0.75	80-4-A1	R900939375	39	-	-
		250	1.5	90L-4-A1	R900939376	45	R900939448	48
PLP 10.3,15	4.5	160	1.5	90L-4-A1	R900939377	45	R900939449	48
		235	2.2	100L-4-A0	R900939381	54	R900939450	57
AZPF-004	5.8	120	1.5	90L-4-A1	R900939382	45	R900939451	48
		250	3	100L-4-A1	R900939383	54	R900939452	57
AZPF-005	7.9	90	1.5	90L-4-A1	R900939384	45	R900939453	48
		185	3	100L-4-A1	R900939385	54	R900939454	57
		250	4	112M-4-B0	R900939386	59	R900939455	62
AZPF-008	11.8	55	1.5	90L-4-A1	R900939387	45	R900939456	48
		120	3	100L-4-A1	R900939388	54	R900939457	57
		230	5.5	132S-4-B0	R900939389	71	R900939458	75
GF2-011	16	95	3	100L-4-A1	R900939395	56	R900939459	59
		130	4	112M-4-B0	R900939396	61	R900939461	64
		175	5.5	132S-4-B0	R900939397	73	R900939462	77
		210	7.5	132M-4-B1	R900939398	87	R900939464	91
R4-1,6-700	2.1	315	1.5	90L-4-A1	R900939390	49	R900939465	52
R4-3,15-500	4.8	300	3	100L-4-A1	R900939391	59	R900939466	62
R4-6,3-500	8.3	315	5.5	132S-4-B0	R900939392	77	R900939467	81
R4-8,0-500	11.4	315	7.5	132M-4-B1	R900939394	93	R900939468	97

Selection table for basic power unit with tank size 60 (type ABSKG-60), attachment type V

built-on pump power units with standard with standard motors to AB42-30

Pump	$q_{V \max}$ at 1450 min ⁻¹ in l/min	p_{\max} in bar	Power P at 50 Hz in kW	El. motor frame size	Material no. without heat exchanger	Weight in kg	Material no. with heat ex- changer	Weight in kg
AZPF-004	5.8	120	1.5	90L-4-A1	R900939404	55	R900939478	58
		250	3	100L-4-A1	R900939416	64	R900939479	67
AZPF-005	7.9	90	1.5	90L-4-A1	R900939417	55	R900939480	58
		185	3	100L-4-A1	R900939418	64	R900939482	67
		250	4	112M-4-B0	R900939419	69	R900939483	72
AZPF-008	11.8	55	1.5	90L-4-A1	R900939420	55	R900939484	58
		120	3	100L-4-A1	R900939421	64	R900939485	67
		230	5.5	132S-4-B0	R900939422	81	R900939486	85
GF2-011	16	95	3	100L-4-A1	R900939424	66	R900939487	69
		130	4	112M-4-B0	R900939425	71	R900939488	74
		175	5.5	132S-4-B0	R900939427	83	R900939489	87
		210	7.5	132M-4-B1	R900939428	97	R900939490	101
GF2-016	23.2	90	4	112M-4-B0	R900939430	71	R900939491	74
		120	5.5	132S-4-B0	R900939431	83	R900939492	87
		165	7.5	132M-4-B1	R900939432	97	R900939493	101
R4-3,15-500	4.8	300	3	100L-4-A1	R900939423	69	R900939494	72
R4-6,3-500	8.3	315	5.5	132S-4-B0	R900939433	87	R900939495	91
R4-8,0-500	11.4	315	7.5	132M-4-B1	R900939434	103	R900939496	107

Selection table for control variant 1

Pressure control unit AB 42-15

Pressure range in bar	50	100	200	315
Material no.	R900827584	R900827585	R900827581	R900827580
Weight in kg	3.0			

Selection table for control variant 6

Subplate type AB42-09/06..DMAB with measuring port, consisting of:

- Plate AB42-09/06..DMAB
- Pressure gauge size 63; AB31-38
- Pressure relief valve DBDS 6 K1X/... to RE 25402

Number of controls	Pressure range in bar			
	50	100	200	315
1	R900868291	R900867747	R900867748	R900867749
2	R900868317	R900868009	R900868017	R900868024
3	R900868318	R900868010	R900868018	R900868025
4	R900868319	R900868011	R900868019	R900868026
5	R900868320	R900868013	R900868020	R900868027
6	R900868321	R900868014	R900868021	R900868028
8	R900868323	R900868016	R900868023	R900868030

Selection table for control variant 7

Subplate type AB42-09/06..D with accumulator charging circuit and measuring port, consisting of:

- Plate AB42-09/06..DMAB
- Pressure gauge size 63; AB31-38
- Pressure relief valve DBDS 6 K1X/... to RE 25402
- Pressure shut-off valve DA 6 VA2-4X/...-17M to RE 26404
- Diaphragm-type accumulator 0.7 l HAD0,7-350-1X/10G04E-1N111-BA

Number of controls	Pressure range of pressure relief valve/pressure shut-off valve in bar		
	100 / 100	210 / 200	315 / 315
1	R900867597	R900867598	R900867599
2	R900867962	R900867969	R900867977
3	R900867963	R900867970	R900867978
4	R900867964	R900867971	R900867979
5	R900867965	R900867972	R900867980
6	R900867966	R900867973	R900867981
8	R900867968	R900867975	R900867983

Order note:

For control variant 7 with air heat exchanger, please order additionally:

Accessories	Material no.
HSZ 06 A028-3X/M01	R900515514

Technical data (for applications outside these parameters, please consult us!)

Tank capacity			l	20; 40; 60
Pipe connections				Connection threads to ISO 1179 (DIN 3852-2 form X) or pipe connections to ISO 8434 part 1
Hydraulic fluid				Mineral oil HLP to DIN 51 524 part 2, ISO VG 46 Please observe our regulations to data sheet RE 07075!
Return line filter				ABZFR-S0050-10-1X/M-B
Filter rating	– Breather filter		µm	10
	– Return line filter		µm	10
Viscosity range with pump type:	– AZPF		mm ² /s	12 to 800 (recommended range: 20 to 100)
	– GF2		mm ² /s	10 to 300
	– R4		mm ² /s	10 to 200
	– PLP		mm ² /s	12 to 100
Max. permissible degree of contamination of the hydraulic fluid				Cleanliness classes to ISO 4406 (c) according to the requirements of the complete hydraulic system ¹⁾
El. motor	– Type of current			Three-phase current
	– Voltage			230/400 V 50 Hz; 460 V 60 Hz or 400/690 V 50 Hz; 460 V 60 Hz to IEC 38
	– Number of poles			4
	– Type of protection			IP55
Air heat exchanger	– Type			PTK to data sheet RE 50092 (for characteristic curves, see page 8)
	– Operating pressure max.		bar	16
Type of piping				Two-edge cutting ring to ISO 8434 part 1 (DIN 2353); light/heavy series
Surface treatment:	– 1st base coat			All structural steel parts primed with zinc dust paint
	– 2nd base coat			All structural steel parts with epoxy RAL 5010
	– Pipes			Fe/Zn8C
	– Components			Base coat of the supplier
	– Tank			No surface treatment

¹⁾ The cleanliness classes specified for components must be adhered to in hydraulic systems. Effective filtration prevents malfunction and, at the same time, increases the service life of components.

For the selection of filters, see data sheets RE 50070, RE 50076, RE 50081, RE 50086 and RE 50088.

COMMISSIONING NOTES**General**

- Power units supplied by us are tested for function and performance. Modifications of whatever nature are not permitted, otherwise, warranty claims will become void.
- Repairs may only be carried out by the manufacturer or his authorised dealers or subsidiaries. Repairs carried out by the customer are not covered by a warranty.
- **For commissioning, observe AB 01-01.02 “operating instructions for hydraulic systems“!**

Note in the sense of EC Machinery Directive 98/37 EC Annex II Section B; manufacturer’s declaration:

The delivered assemblies are manufactured in accordance with the harmonised standards EN 982, EN 983, DIN EN ISO 12100 and DIN EN 60204-1.

Putting into service is prohibited until it was determined that the machine, into which the assemblies are to be integrated, meet the requirements of EC Directives.

Technical data (for applications outside these parameters, please consult us!)

Thermal dissipation losses

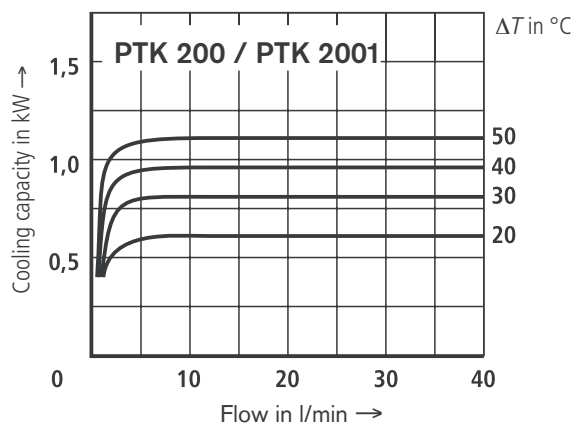
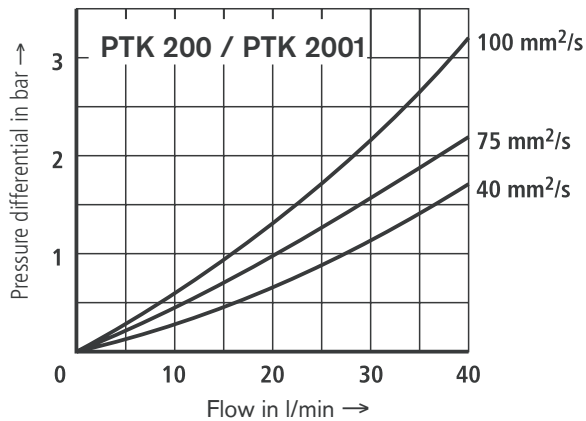
Tank	Surface with cover in m ²	Thermal dissipation loss P30 in kW	Specific thermal dissipation loss in kW/°C
20	0.5	0.17	0.0055
40	1.0	0.35	0.0117
60	1.3	0.45	0.015

Characteristic curves (average values) of air heat exchanger type PTK

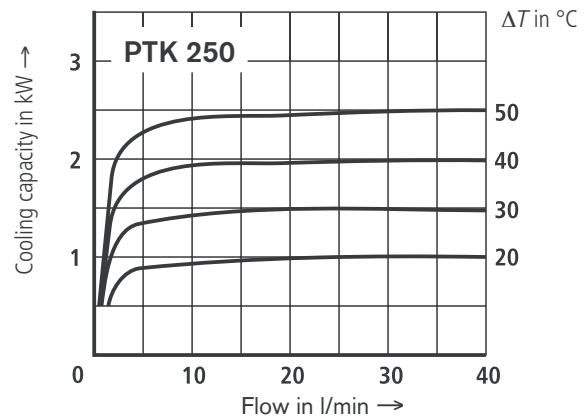
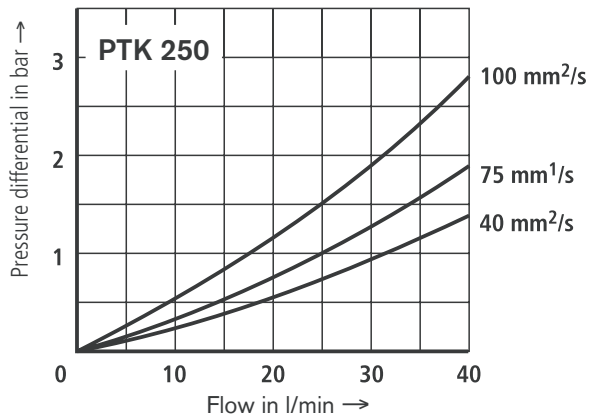
Flow
 Direction of flow optional.
 Pressure differential Δp in dependence upon flow q_v and the viscosity of the hydraulic fluid

Cooling capacity
 in dependence upon flow q_v and temperature differential ΔT of fluid inlet and air inlet.
 Fan revving speed 1500 min⁻¹

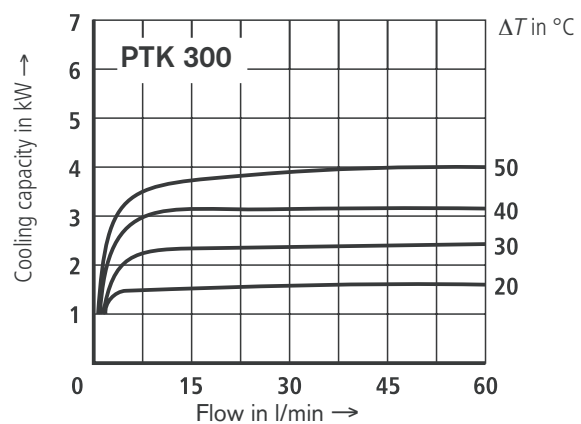
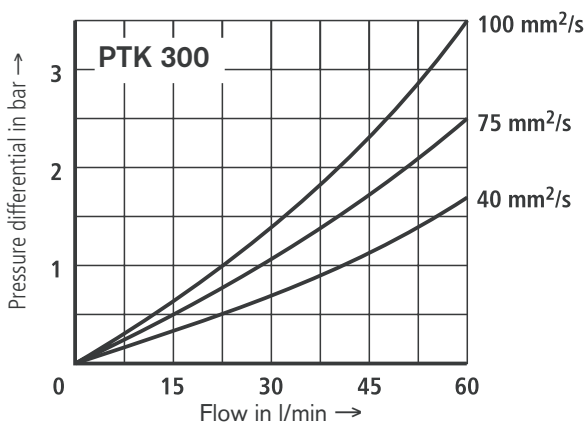
Motor frame size 80/90



Motor frame size 100/112

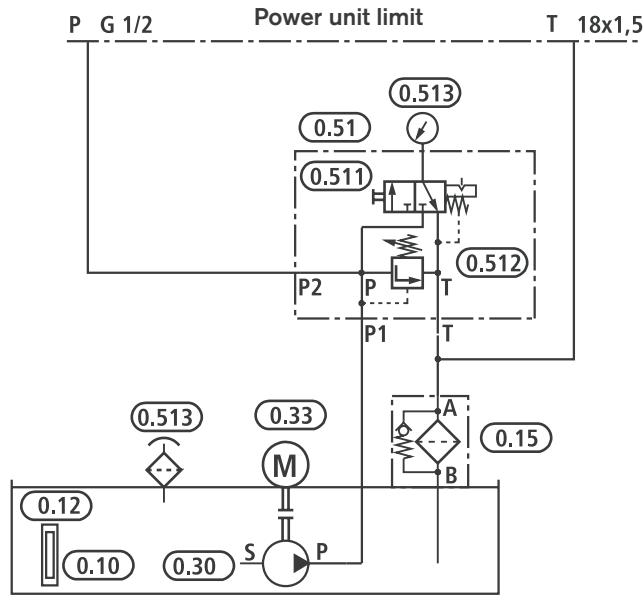


Motor frame size 132

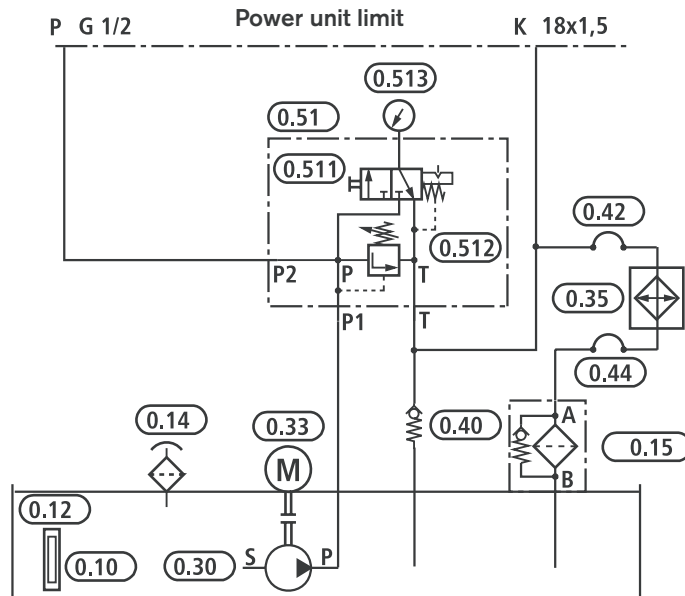


Circuit diagrams: Control variant 1

Control variant 1 without air heat exchanger

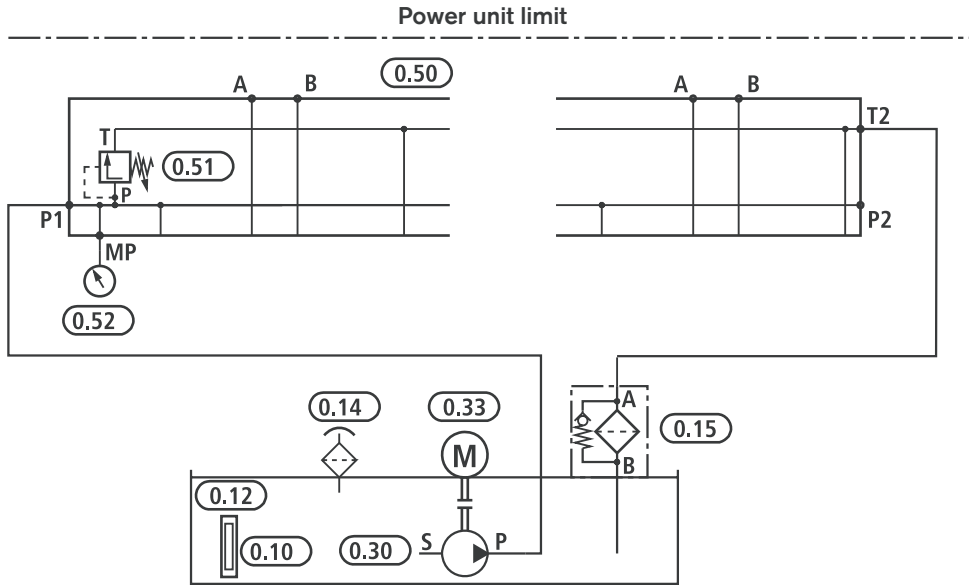


Control variant 1 with air heat exchanger

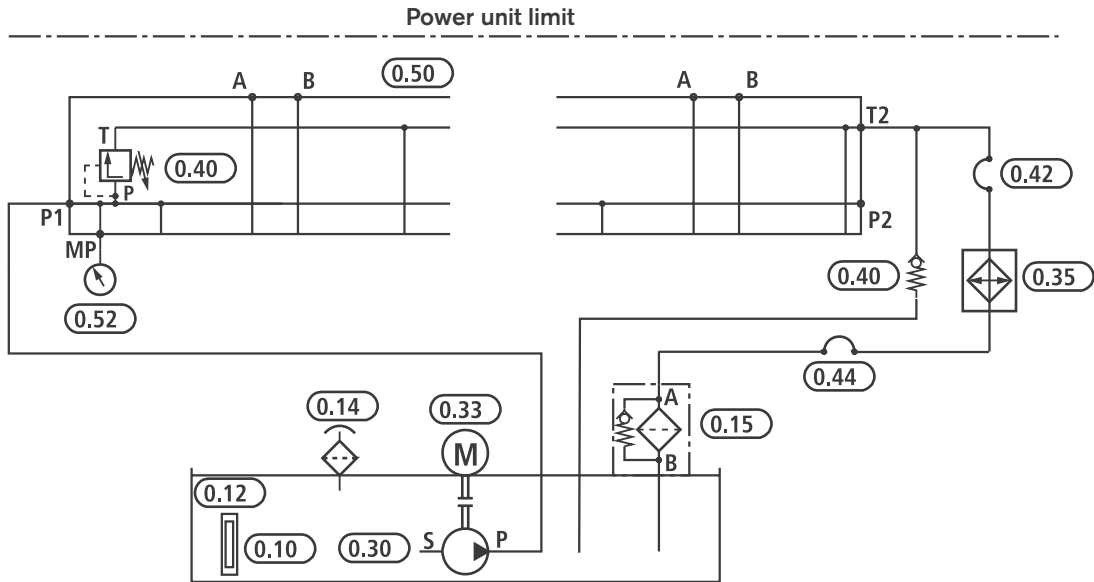


Circuit diagrams: Control variant 6

Control variant 6 without air heat exchanger

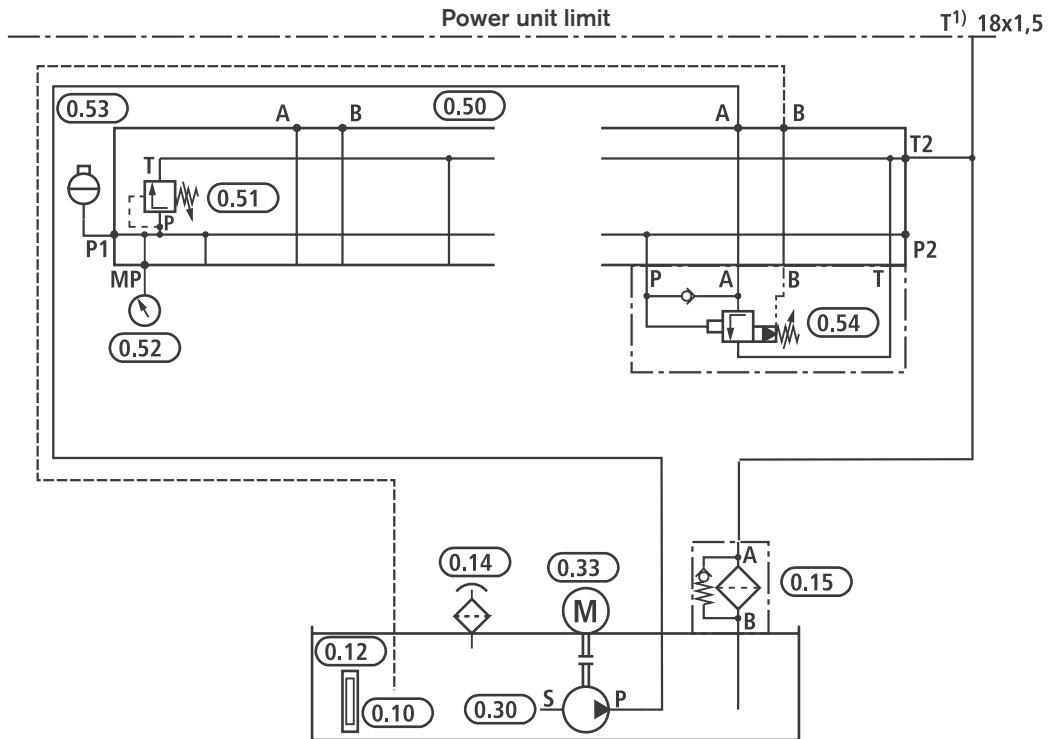


Control variant 6 with air heat exchanger

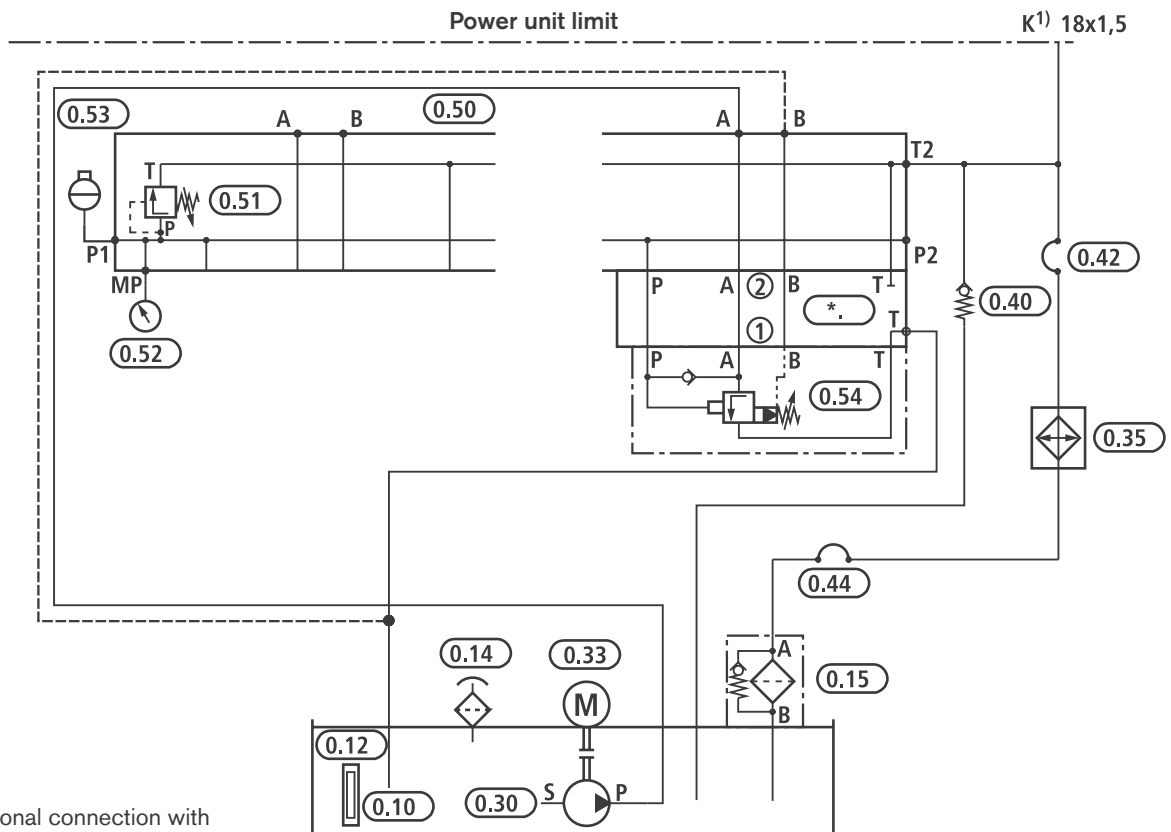


Circuit diagrams: Control variant 7

Control variant 7 without air heat exchanger

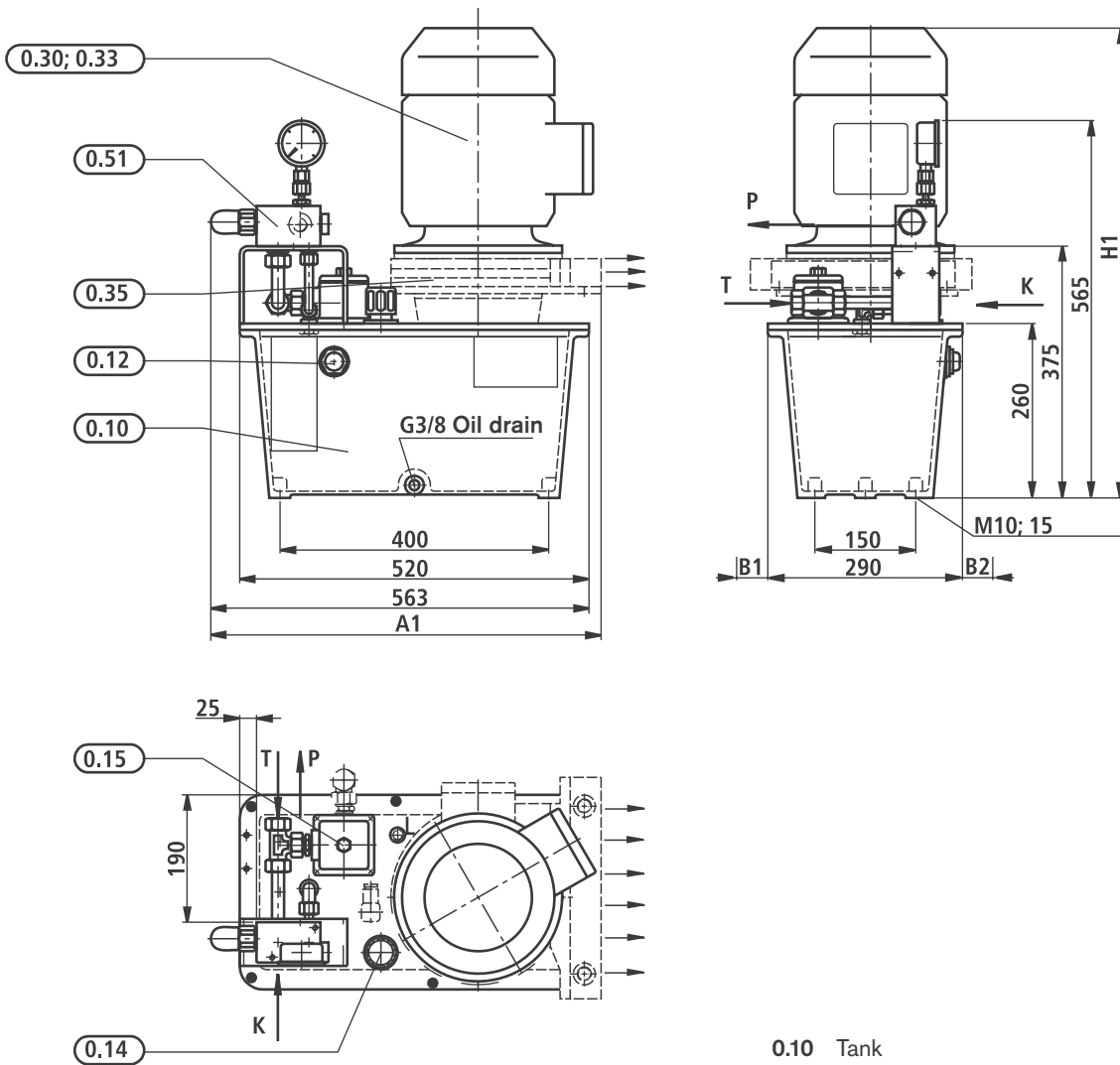


Control variant 7 with air heat exchanger



¹⁾ Additional connection with number of controls = 1

Unit dimensions: Type ABSKG-20, control variant 1 (nominal dimensions in mm)

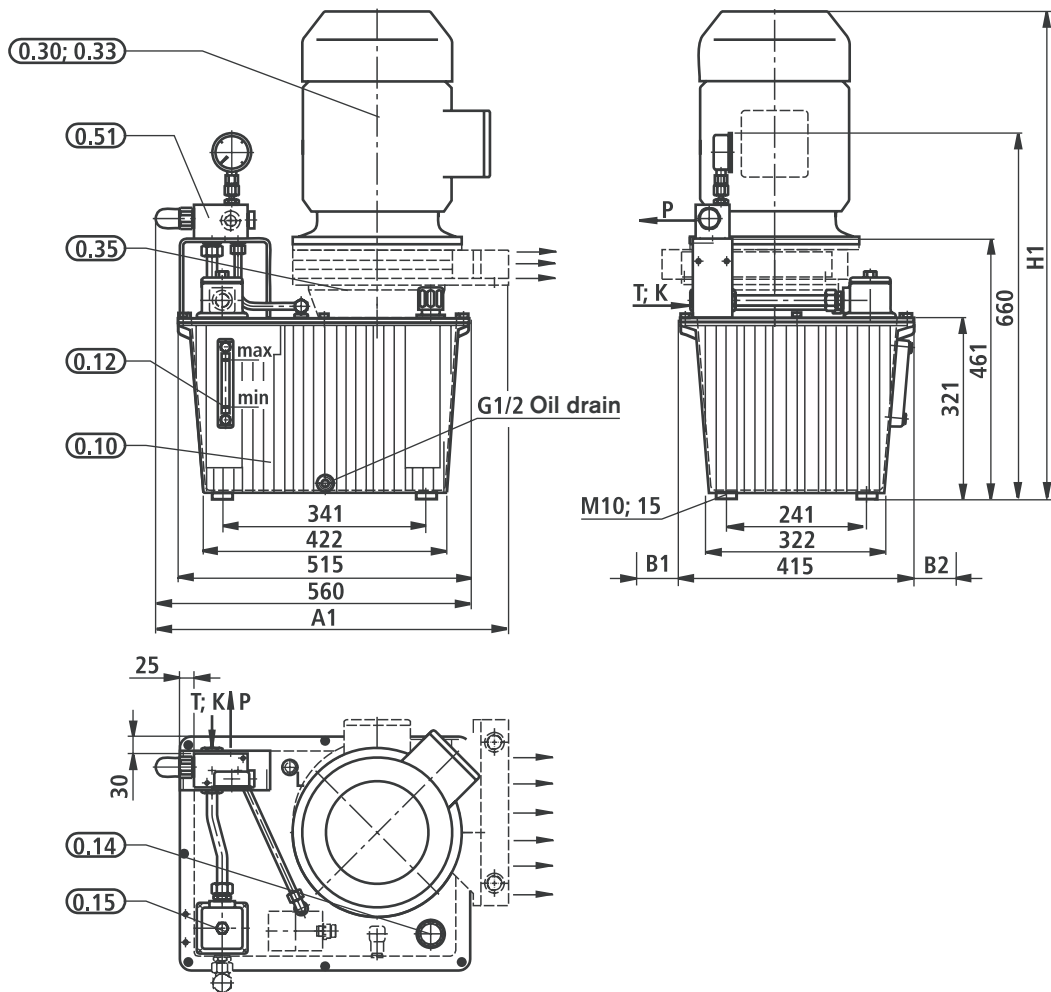


- 0.10 Tank
- 0.12 Oil level indicator
- 0.14 Filling connection
- 0.15 Return line filter
- 0.30 Pump
- 0.33 El. motor
Pump mounting bracket
Coupling
- 0.35 Air heat exchanger
(basic power unit .../L)
- 0.51 Pressure control unit

Pipe connections without air heat exchanger		Pipe connections with air heat exchanger	
P	G1/2	P	G1/2
T	Ø18	K	Ø18
L	G3/8	-	-

Motor frame size		71	80/90	100/112
Without air heat exchanger	H1	520	520/560	600/620
	H1	-	- /620	680/700
With air heat exchanger	A1	-	-	585
	B1	-	50	50
	B2	-	60	60

Unit dimensions: Type ABSKG-40, control variant 1 (nominal dimensions in mm)

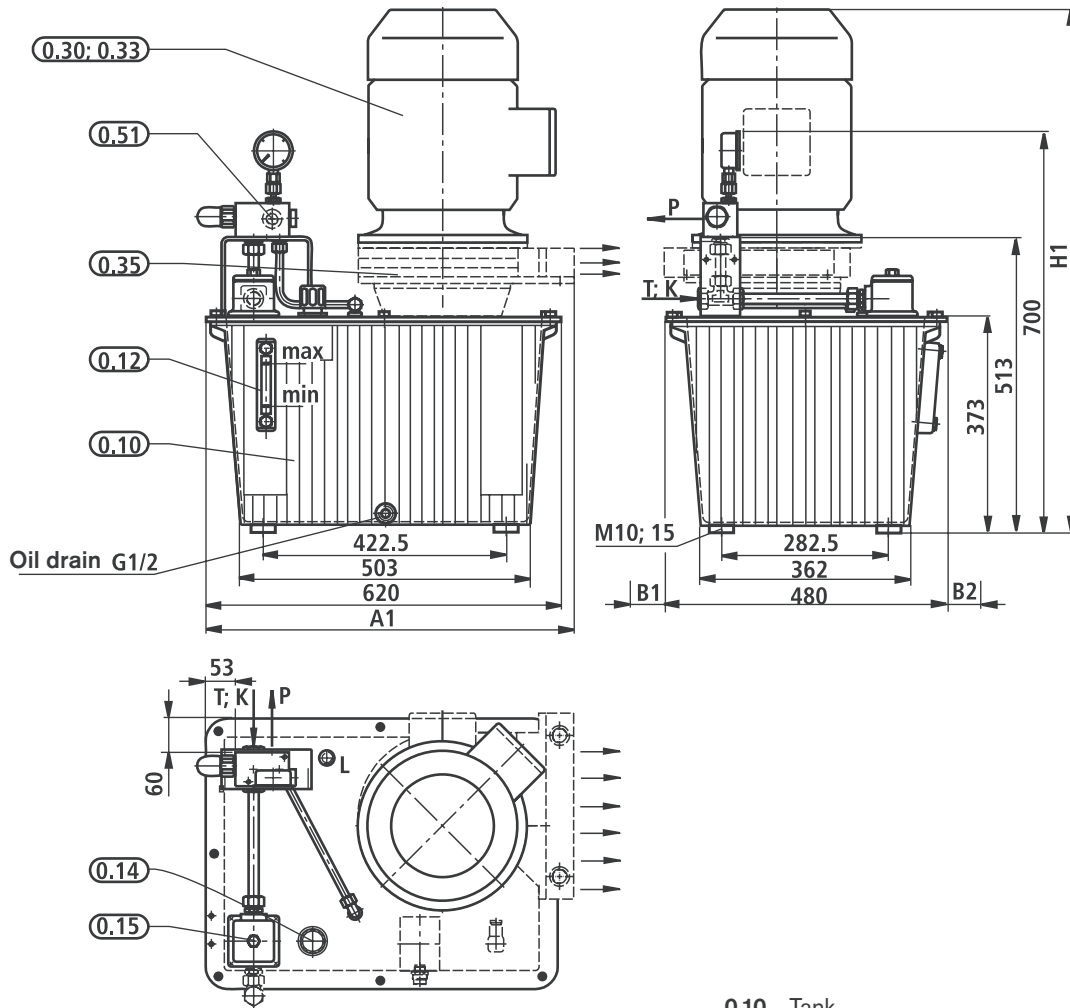


- 0.10 Tank
- 0.12 Oil level indicator
- 0.14 Filling connection
- 0.15 Return line filter
- 0.30 Pump
- 0.33 El. motor
Pump mounting bracket
Coupling
- 0.35 Air heat exchanger
(basic power unit .../L)
- 0.51 Pressure control unit

Pipe connections without air heat exchanger		Pipe connections with air heat exchanger	
P	G1/2	P	G1/2
T	Ø18	K	Ø18
L	G1/2	-	-

Motor frame size		80/90	100/112	132
Without air heat exchanger	H1	580/625	660/680	755
	H1	- /685	740/760	865
With air heat exchanger	A1	-	595	630
	B1	75	75	75
	B2	45	45	45

Unit dimensions: Type ABSKG-60, control variant 1 (nominal dimensions in mm)

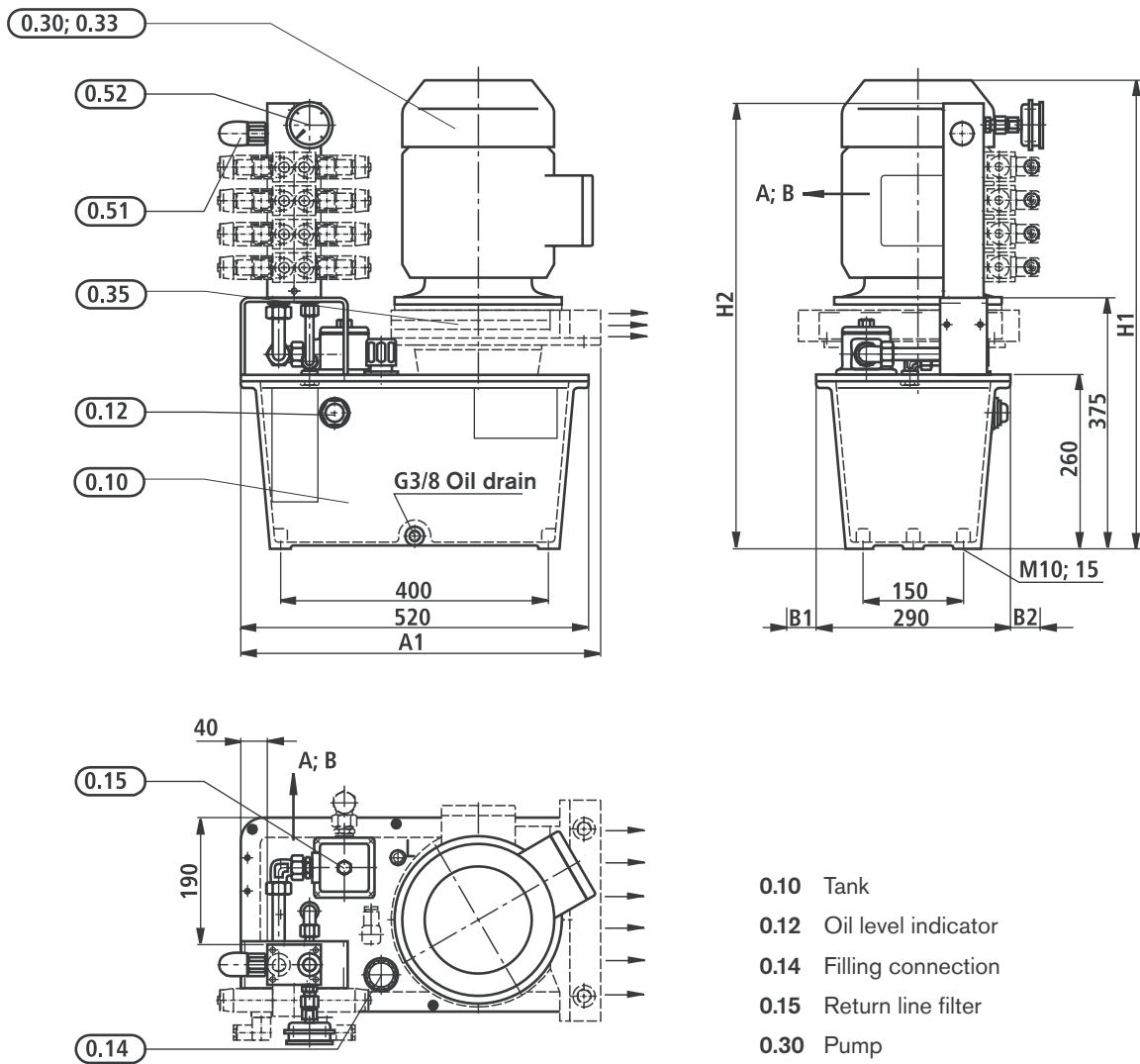


- 0.10 Tank
- 0.12 Oil level indicator
- 0.14 Filling connection
- 0.15 Return line filter
- 0.30 Pump
- 0.33 El. motor
Pump mounting bracket
Coupling
- 0.35 Air heat exchanger
(basic power unit .../L)
- 0.51 Pressure control unit

Pipe connections without air heat exchanger		Pipe connections with air heat exchanger	
P	G1/2	P	G1/2
T	Ø18	K	Ø18
L	G1/2	-	-

Motor frame size		80/90	100/112	132
Without air heat exchanger	H1	630/675	710/310	805
	H1	- /735	790/810	915
With air heat exchanger	A1	-	-	670
	B1	45	45	45
	B2	35	35	35

Unit dimensions: Type ABSKG-20, control variant 6 (nominal dimensions in mm)



- 0.10 Tank
- 0.12 Oil level indicator
- 0.14 Filling connection
- 0.15 Return line filter
- 0.30 Pump
- 0.33 El. motor
Pump mounting bracket
Coupling
- 0.35 Air heat exchanger
(basic power unit .../L)
- 0.51 Pressure control valve
- 0.52 Pressure gauge

Pipe connections without air heat exchanger		Pipe connections with air heat exchanger	
A	G3/8	A	G3/8
B	G3/8	B	G3/8
L	G3/8	-	-

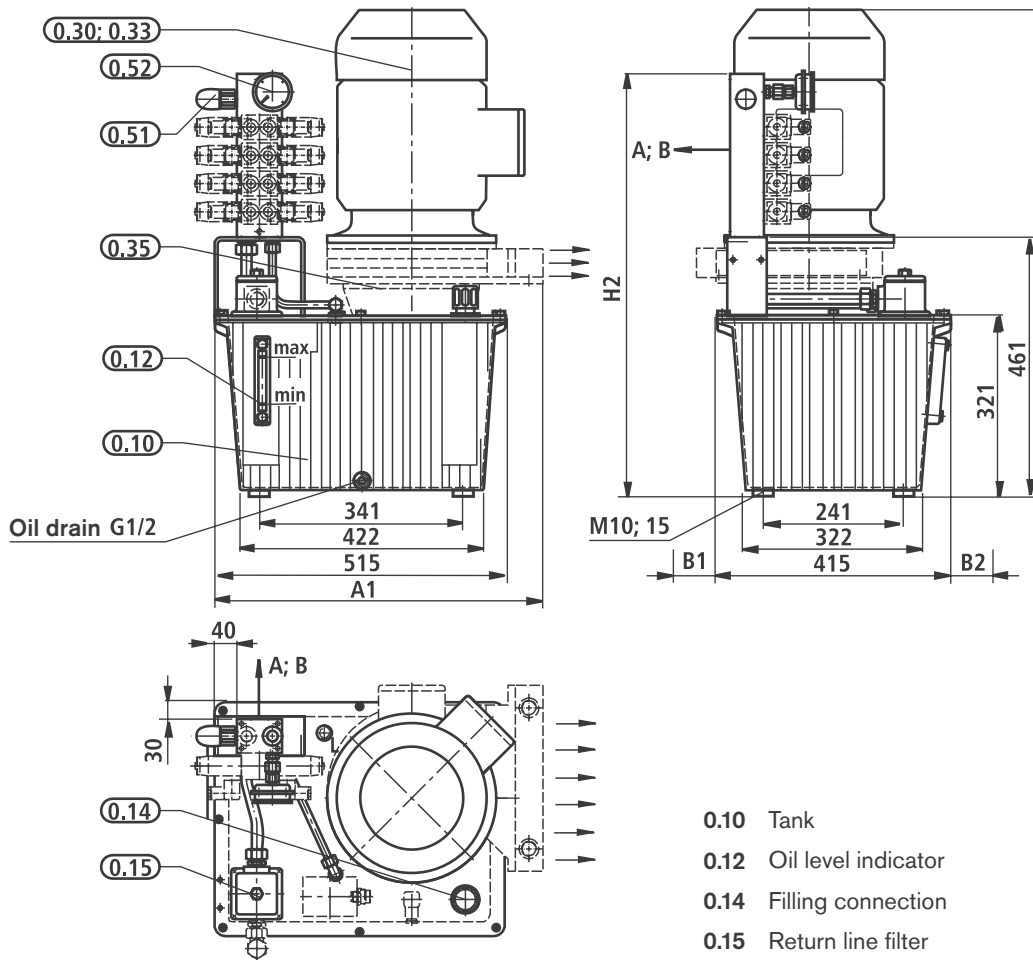
Motor frame size		71	80/90	100/112
Without air heat exchanger	H1	520	520/560	600/620
	H1	-	- /620	680/700
With air heat exchanger	A1	-	-	540
	B1	-	50	50
	B2	-	60	60

Dimensions: Dimension H2

Number of controls	1	2	3	4	5	6	8
H2	515	565	615	665	715	765	865

Caution: Depending on the built-on controls, components can protrude beyond the dimensions given here.

Unit dimensions: Type ABSKG-40, control variant 6 (nominal dimensions in mm)



- 0.10 Tank
- 0.12 Oil level indicator
- 0.14 Filling connection
- 0.15 Return line filter
- 0.30 Pump
- 0.33 El. motor
Pump mounting bracket
Coupling
- 0.35 Air heat exchanger
(basic power unit .../L)
- 0.51 Pressure control valve
- 0.52 Pressure gauge

Pipe connections without air heat exchanger		Pipe connections with air heat exchanger	
A	G3/8	A	G3/8
B	G3/8	B	G3/8
L	G1/2	-	-

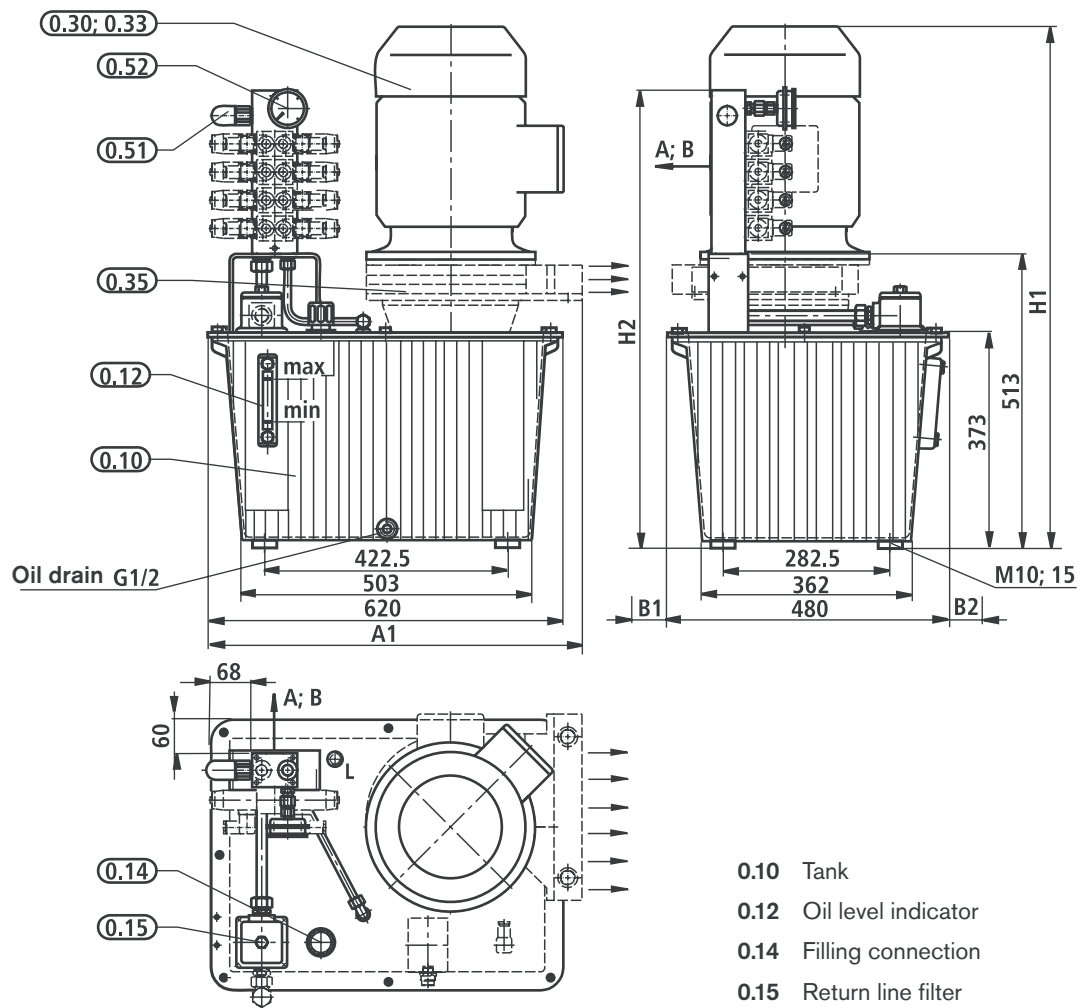
Motor frame size		80/90	100/112	132
Without air heat exchanger	H1	580/625	660/680	755
	H1	- /685	740/760	865
With air heat exchanger	A1	-	565	600
	B1	75	75	75
	B2	45	45	45

Dimensions: Dimension H2

Number of controls	1	2	3	4	5	6	8
H2	605	655	705	755	805	855	955

Caution: Depending on the built-on controls, components can protrude beyond the dimensions given here.

Unit dimensions: Type ABSKG-60, control variant 6 (nominal dimensions in mm)



- 0.10 Tank
- 0.12 Oil level indicator
- 0.14 Filling connection
- 0.15 Return line filter
- 0.30 Pump
- 0.33 El. motor
Pump mounting bracket
Coupling
- 0.35 Air heat exchanger
(basic power unit .../L)
- 0.51 Pressure control valve
- 0.52 Pressure gauge

Pipe connections without air heat exchanger		Pipe connections with air heat exchanger	
A	G3/8	A	G3/8
B	G3/8	B	G3/8
L	G1/2	-	-

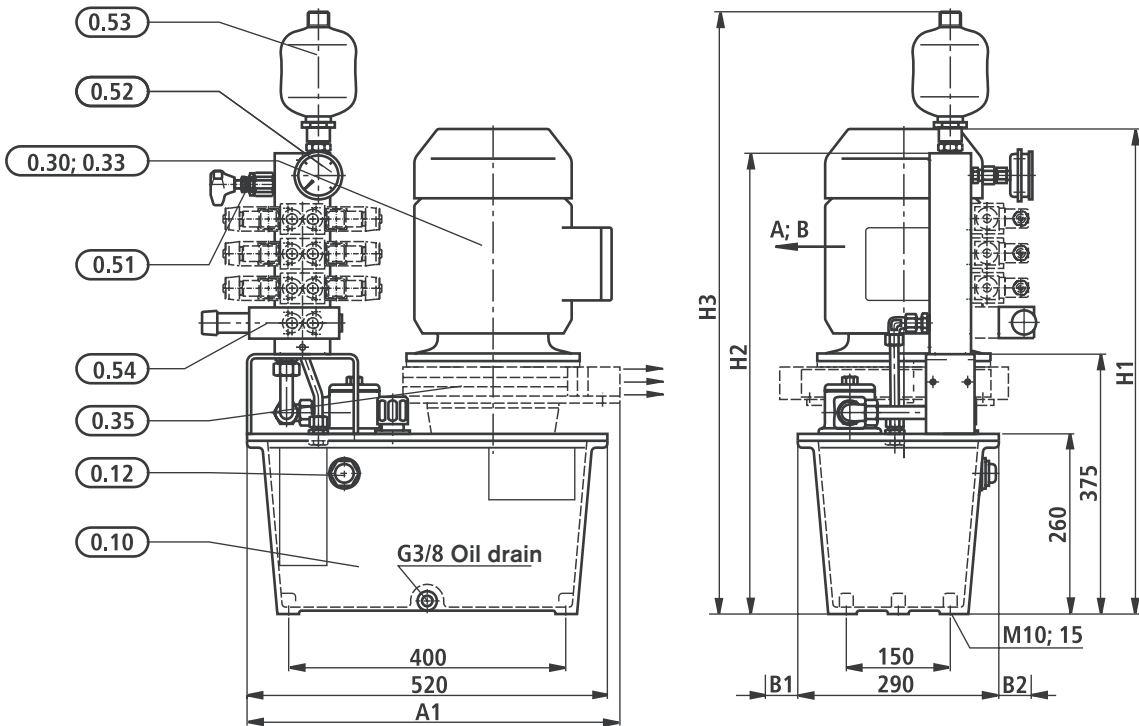
Motor frame size		80/90	100/112	132
Without air heat exchanger	H1	630/675	710/730	805
	H1	- /735	790/810	915
With air heat exchanger	A1	-	-	670
	B1	45	45	45
	B2	35	35	35

Dimensions: Dimension H2

Number of controls	1	2	3	4	5	6	8
H2	655	705	755	805	855	905	1005

Caution: Depending on the built-on controls, components can protrude beyond the dimensions given here.

Unit dimensions: Type ABSKG-20, control variant 7 (nominal dimensions in mm)



- 0.10 Tank
- 0.12 Oil level indicator
- 0.14 Filling connection
- 0.15 Return line filter
- 0.30 Pump
- 0.33 El. motor
Pump mounting bracket
Coupling
- 0.35 Air heat exchanger
(basic power unit .../L)
- 0.51 Pressure control valve
- 0.52 Pressure gauge
- 0.53 Hydraulic accumulator
- 0.54 Accumulator charging valve

Pipe connections without air heat exchanger		Pipe connections with air heat exchanger	
A	G3/8	A	G3/8
B	G3/8	B	G3/8
L	G3/8	-	-

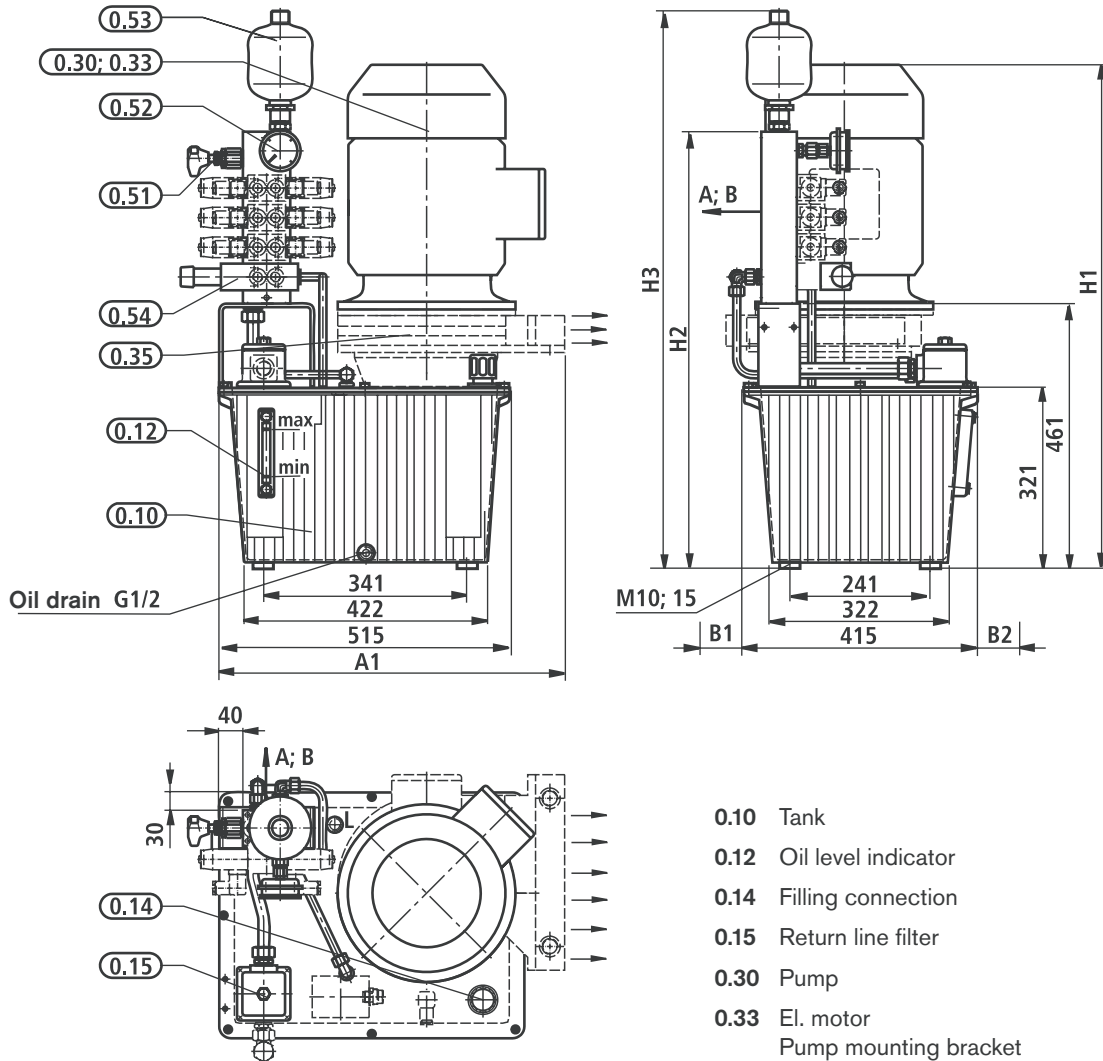
Motor frame size		71	80/90	100/112
Without air heat exchanger	H1	520	520/560	600/620
	H3	-	- /620	680/700
With air heat exchanger	A1	-	-	590
	B1	-	50	50
	B2	-	60	60

Dimensions: Dimension H2/H3

Number of controls	1	2	3	4	5	6	8
H2	515	565	615	665	715	765	865
H3	720	770	820	870	920	970	1070

Caution: Depending on the built-on controls, components can protrude beyond the dimensions given here.

Unit dimensions: Type ABSKG-40, control variant 7 (nominal dimensions in mm)



- 0.10 Tank
- 0.12 Oil level indicator
- 0.14 Filling connection
- 0.15 Return line filter
- 0.30 Pump
- 0.33 El. motor
Pump mounting bracket
Coupling
- 0.35 Air heat exchanger
(basic power unit .../L)
- 0.51 Pressure control valve
- 0.52 Pressure gauge
- 0.53 Hydraulic accumulator
- 0.54 Accumulator charging valve

Pipe connections without air heat exchanger		Pipe connections with air heat exchanger	
A	G3/8	A	G3/8
B	G3/8	B	G3/8
L	G1/2	-	-

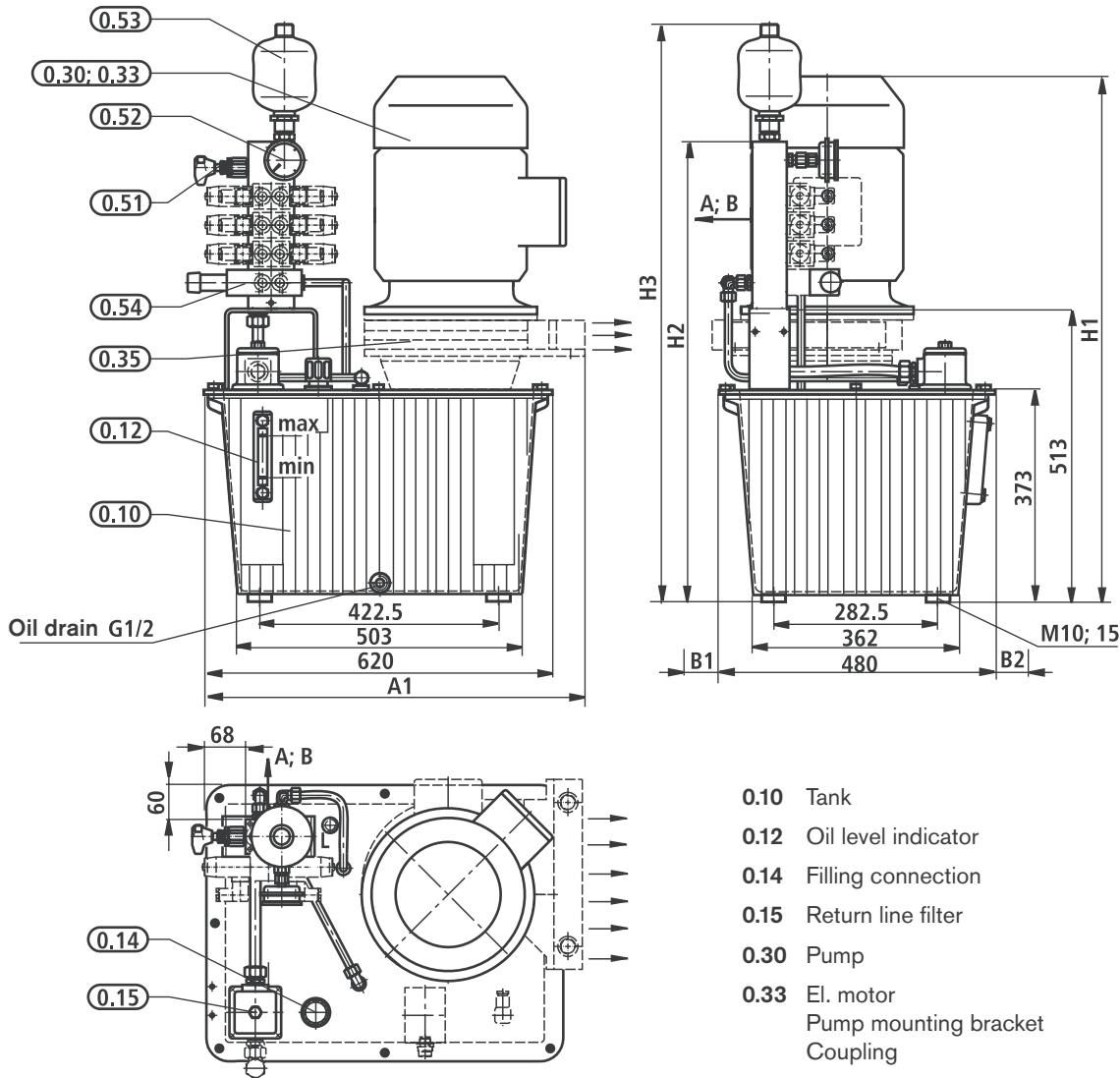
Motor frame size		80/90	100/112	132
Without air heat exchanger	H1	580/625	660/680	755
	H1	- /685	740/760	865
With air heat exchanger	A1	-	565	600
	B1	75	75	75
	B2	45	45	45

Dimensions: Dimension H2/H3

Number of controls	1	2	3	4	5	6	8
H2	605	655	705	755	805	855	955
H3	810	860	910	960	1010	1060	1160

Caution: Depending on the built-on controls, components can protrude beyond the dimensions given here.

Unit dimensions: Type ABSKG-60, control variant 7 (nominal dimensions in mm)



Pipe connections without air heat exchanger		Pipe connections with air heat exchanger	
A	G3/8	A	G3/8
B	G3/8	B	G3/8
L	G1/2	-	-

Motor frame size		80/90	100/112	132
Without air heat exchanger	H1	630/675	710/730	805
	H1	- /735	790/810	915
With air heat exchanger	A1	-	-	670
	B1	45	45	45
	B2	35	35	35

Dimensions: Dimension H2/H3

Number of controls	1	2	3	4	5	6	8
H2	655	705	755	805	855	905	1005
H3	860	910	960	1010	1060	1110	1210

Caution: Depending on the built-on controls, components can protrude beyond the dimensions given here.

Options

Level switch N

- Float switch AB 31-35 with **min./max. switching contacts** and optionally with one temperature contact (70 °C)

Tank capacity	Min. switching point NC contact ¹⁾	Max. switching point NO contact ¹⁾	Designation	Material no.
20	120	50	ABZMS-35-1X/120F050S-K24	R901057913
40 / 60	165	85	ABZMS-35-1X/165F085S-K24	R901057914
20	120	50	ABZMS-35-1X/120F050S-T70F-K24	R901057918
40 / 60	165	85	ABZMS-35-1X/165F085S-T70F-K24	R901057920

Volumes

Tank capacity	Volume in l	Fluctuation volume in l	Residual volume in l at switching point in min
20	18	6.8	11.2
40	33	12.2	20.8
60	54	17	37

¹⁾ with falling level

- Float switch AB 31-35 with **min./pre-warning switching contacts** and optionally with one temperature contact (70 °C)

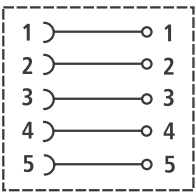
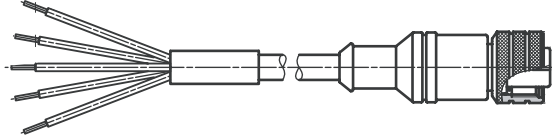
Tank capacity	Min. switching point NC contact ¹⁾	Switching point (pre-warning) NO contact ¹⁾	Designation	Material no.
20	120	90	ABZMS-35-1X/120F090S-K24	R901088810
40 / 60	165	135	ABZMS-35-1X/165F135S-K24	R901088811
20	120	90	ABZMS-35-1X/120F090S-T70F-K24	R901088813
40 / 60	165	135	ABZMS-35-1X/165F135S-T70F-K24	R901088814

Volumes

Tank capacity	Volume in l	Fluctuation volume in l	Residual volume in l at switching point pre-warning
20	18	4.0	14.0
40	33	8.0	25.0
60	54	11.0	43.0

¹⁾ bei fallendem Niveau

Plug-in connectors for mounting onto float switch type ABZMS-35-1X/...K24

Plug-in connector 24 V DC	Material no.	Material no. - cable set provided for wiring by the customer at one end		
		Cable length 3 m	Cable length 5 m	Cable length 10 m
Female M12x1 without circuitry	R900749248	R900751118	R900734685	R900751116
Circuit diagram		 <ul style="list-style-type: none"> 1 brown 2 white 4 black 3 blue 5 green/yellow ⊕ PE 		

Note:

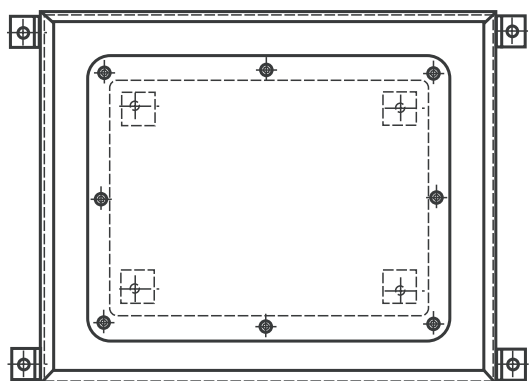
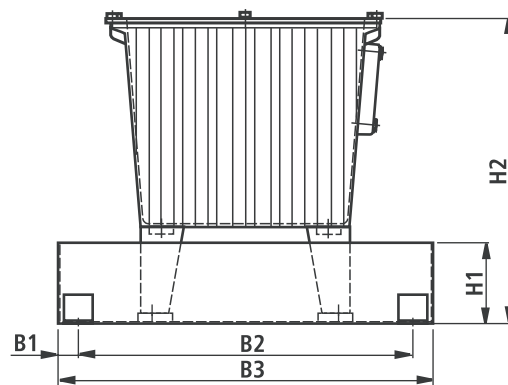
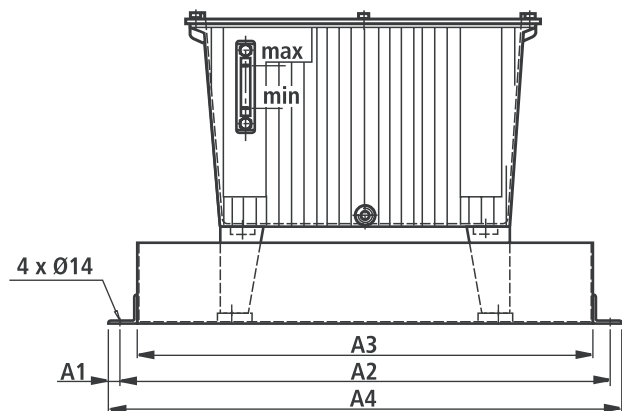
If a float switch with temperature contact is used, two plug-in connectors are required!

Options

Oil drip tray O

– The oil drip trays are designed to accommodate the entire tank capacity.

Tank capacity	Oil drip tray	Material no. Assembly Steel version	Material no. Assembly Stainless steel version according to Water Resources Act
20	AB 40-09/20	R901048242	R901048243
40	AB 40-09/40	R901048248	R901048249
60	AB 40-09/60	R901048245	R901048246



Dimensions in mm

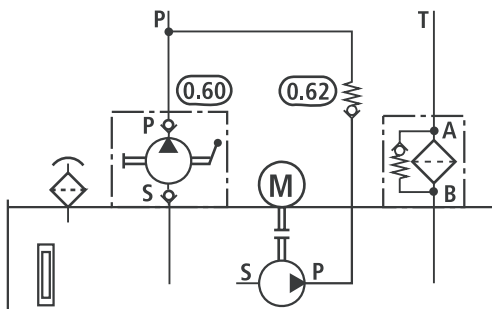
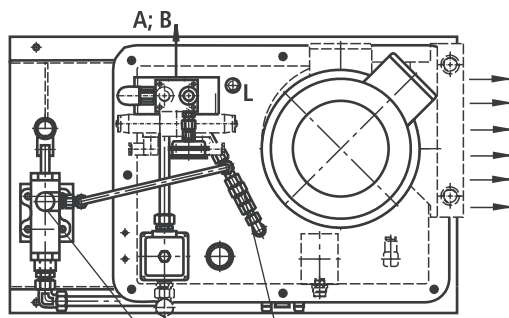
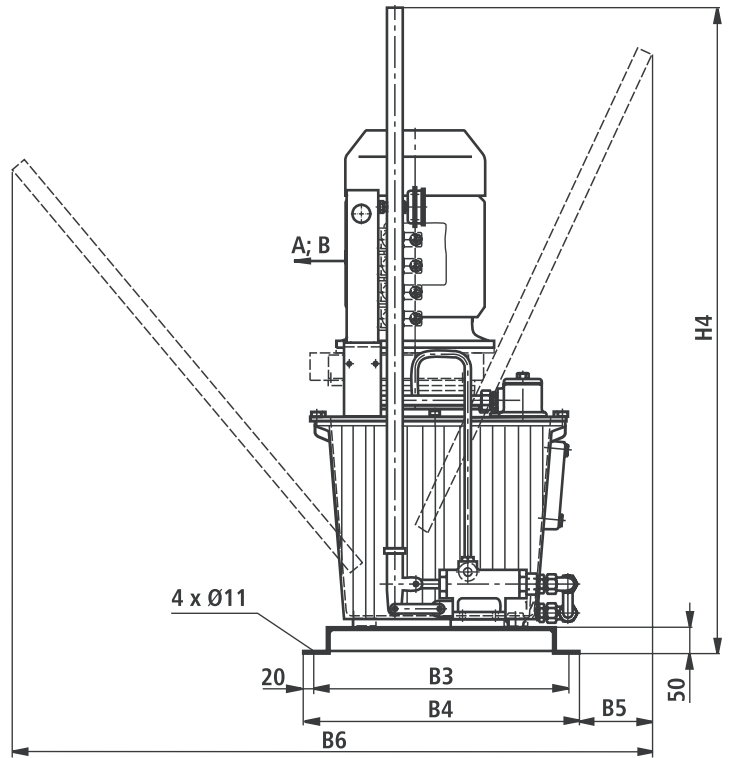
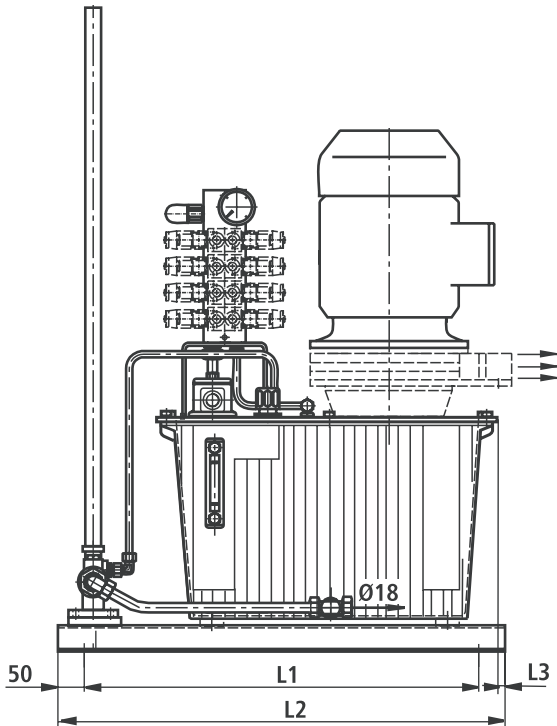
Dimension	Tank capacity		
	20	40	60
A1	20	20	20
A2	740	750	850
A3	680	690	790
A4	780	790	890
B1	35	35	35
B2	380	520	580
B3	450	590	650
H1	100	140	140
H2	363	478	533

Options

Hand pump P

- Kit consisting of:
- Hand pump AB42-20/25
 - Check valve RHD 12 PS0,5 / RHD 16 PS0,5
 - Console

q_{Vmax} in l/min	Tank capacity	Designation	Material no.
≤ 11.8	40	BAUSATZ ABSKG40-AB42-20/25+RHD12PS0,5	R901072413
	60	BAUSATZ ABSKG60-AB42-20/25+RHD12PS0,5	R901072416
> 11.8	40	BAUSATZ ABSKG40-AB42-20/25+RHD16PS0,5	R901072415
	60	BAUSATZ ABSKG60-AB42-20/25+RHD16PS0,5	R901072417



Dimensions in mm

Dimension	Tank capacity	
	40	60
L1	620	750
L2	720	850
L3	13	23
B3	420	485
B4	460	525
B5	145	140
B6	1220	1220
H4	1200	1200

- 0.60 Hand pump
0.62 Check valve

Options

Thermostat T

(only for tank sizes 40 and 60)

- Thermostat with one temperature regulator to AB 31-32
- Thermostat with two temperature regulators to AB 31-14

Regulator	Thermostat	Material no.	Accessories	Material no.
1	AB 31-32	R900020588	Sleeve AB 21-22 NBR	R900067516
2	AB 31-14/2-1A2A	R900013645	–	–

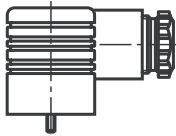
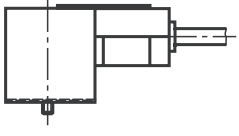
Accessories

Clogging indicator for return line filter

– Cracking pressure $\Delta p = 2$ to 3 bar

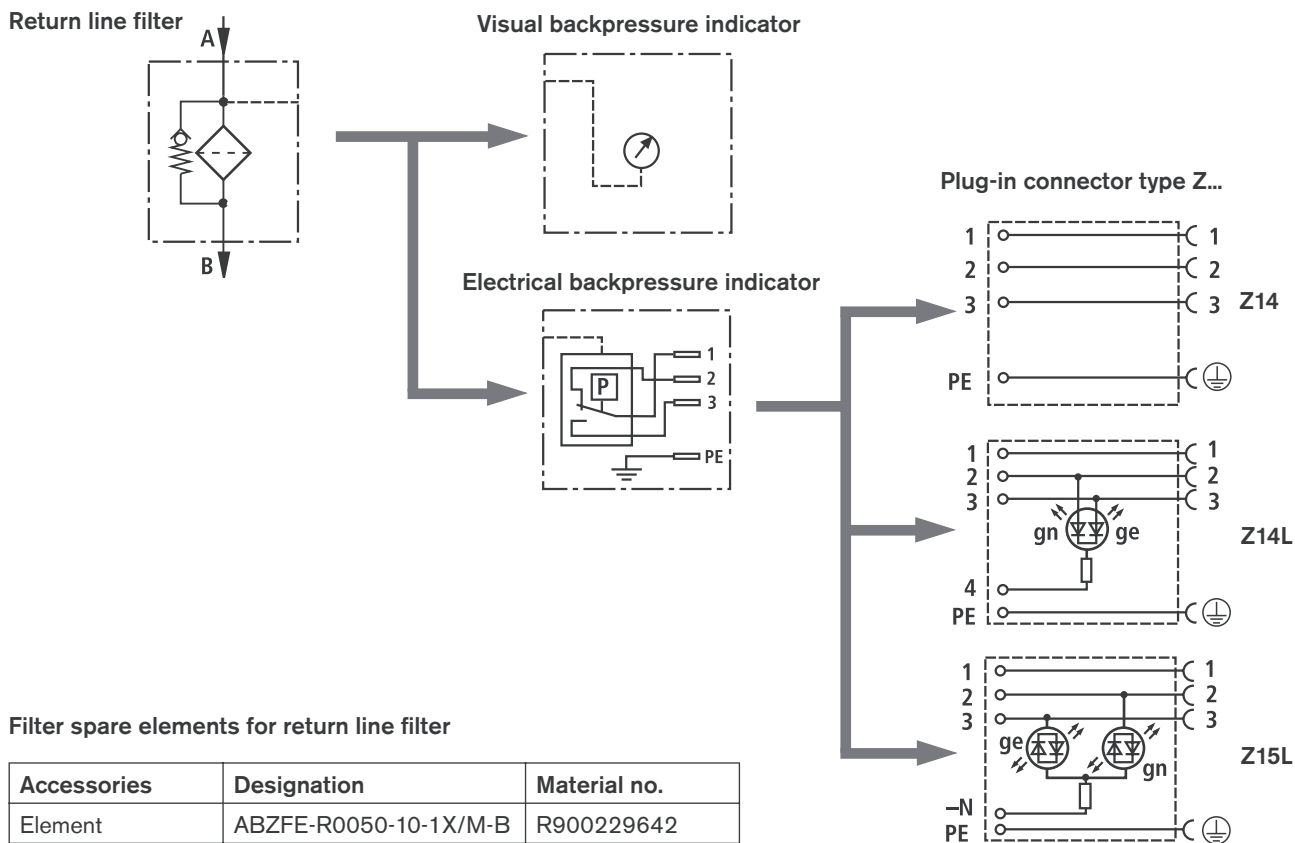
Type	Designation	Material no.
Visual backpressure indicator (pressure gauge)	ABZFV-RV2-1X/M-B	R900229636
Electrical backpressure indicator	ABZFV-RE2-1X/M-B	R900229637

Plug-in connectors for mounting onto electrical clogging indicators

Plug-in connector	DC voltage	AC voltage	 Material no.	 Material no.	
				Cable length 5 m	Cable length 10 m
“Z14”(standard) without circuitry	12 – 240 V		R901017012	R900058528	R900217139
“Z14L” with indicator lamp	24 V		–	R900210635	R900217140
“Z15L” with indicator lamp	24 V		R901017048	–	–
	110 V		R901017035	–	–
	220V		R901017037	–	–

For technical data and unit dimensions, see data sheet RE 08006, pages 5 and 6.

Accessories



Foot AB 40-09 for tank 40 l; 60 l

Accessories	Quantity	Material no.
Foot AB 40-09/1	4	R901044792