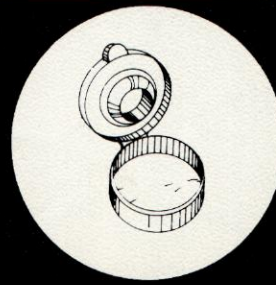
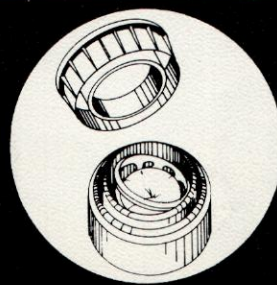
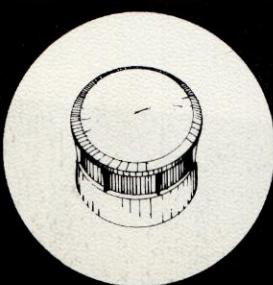
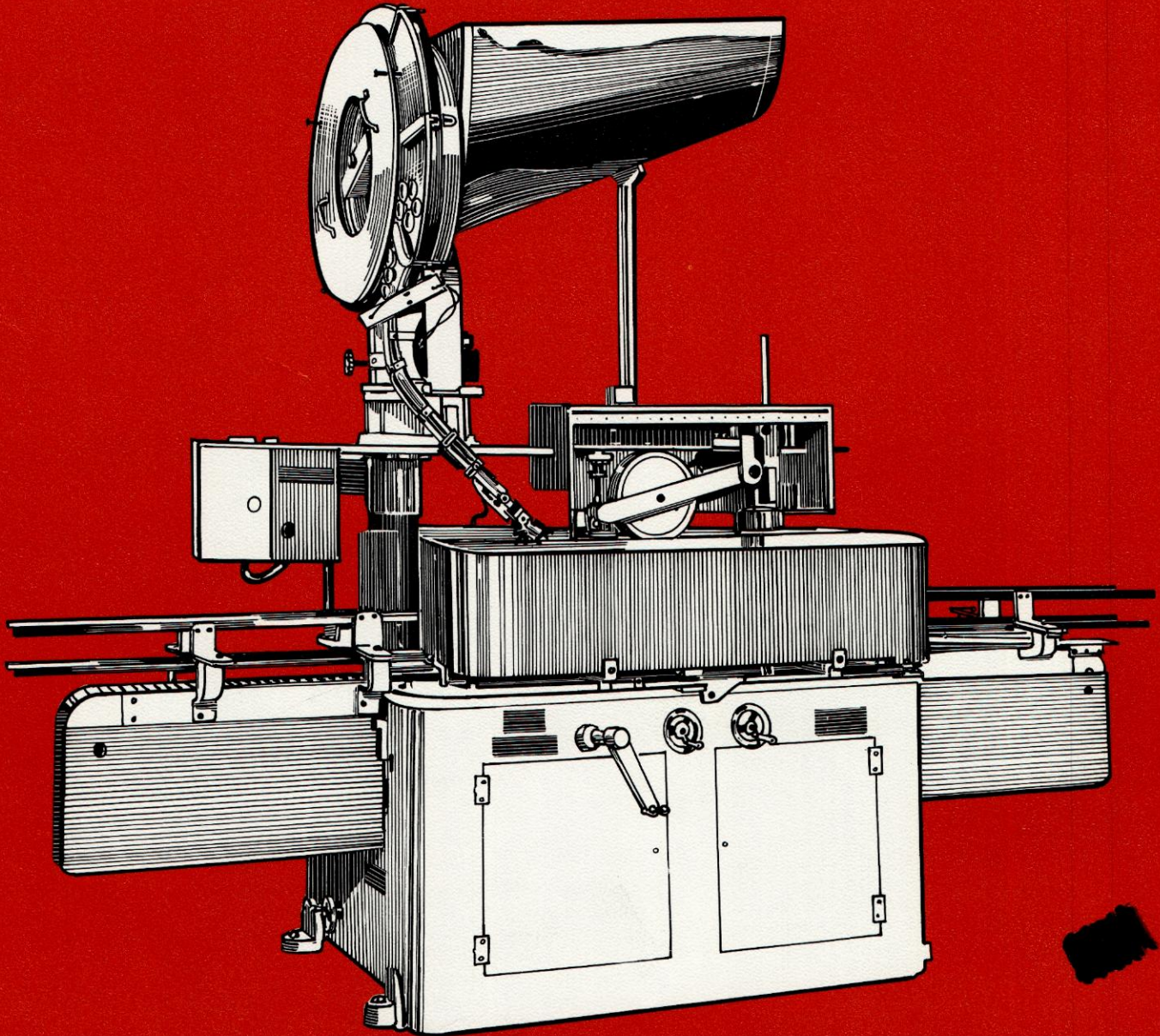


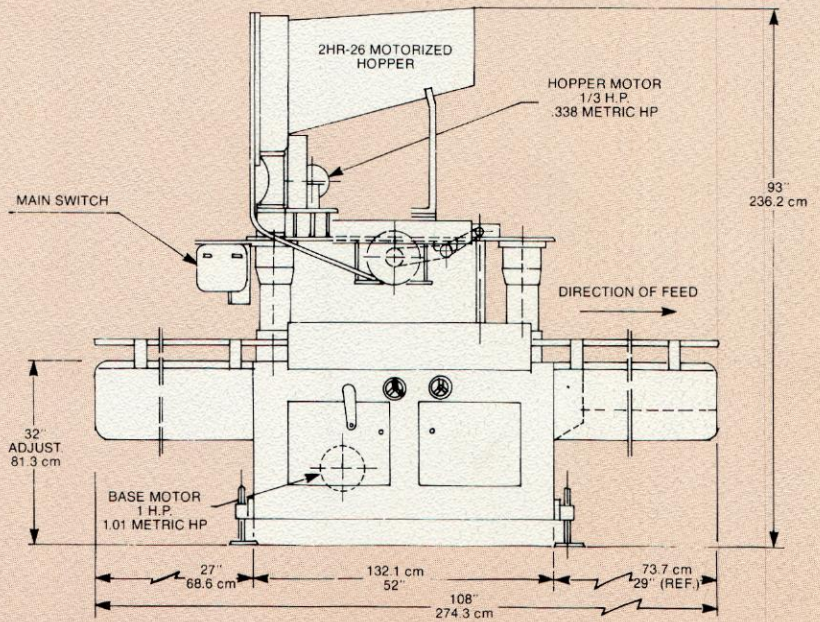
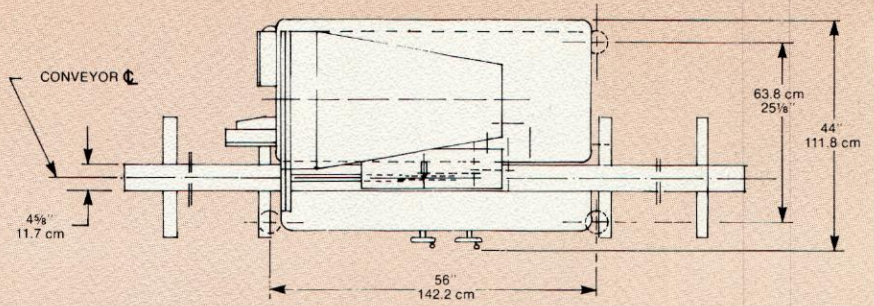
The up-to-200 per minute FULLY AUTOMATIC DOUBLE SNAP CAP AND OVERCAP APPLICATOR MACHINE MODEL UF

Industries:

Food & Food Products
Drugs
Cap Manufacturers
Chemicals & Oils
Special Applications

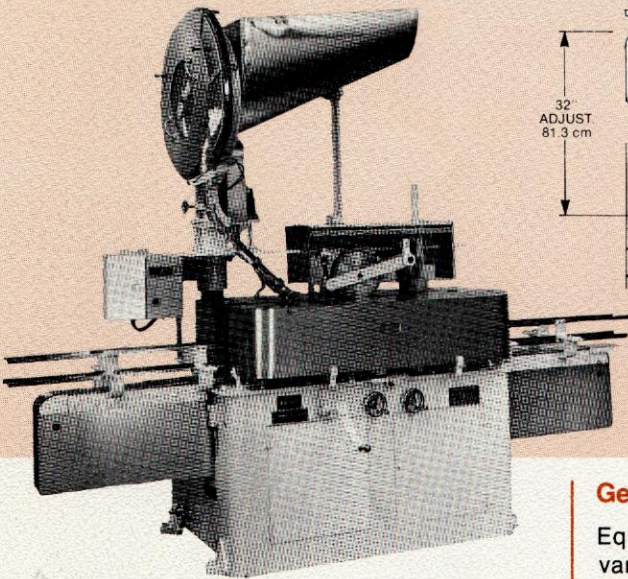


The Versatile, Simple to Use, Easy Changeover Cappers



UF MACHINE FLOOR PLAN

APPROX WEIGHT 3200 LBS. 1440 Kg

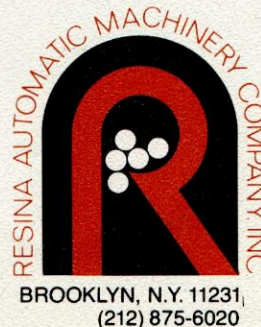


- Cap Range:** Upon inspection
- Container Size:** 2 1/2" minimum height. Maximum depends on configuration.
- Approximate Weight:** 3200 lbs.

General Description

Equipped with 9-foot conveyor, standard motors, starting controls, variable speed drive, 2 HR26 motorized hopper, electric eye hopper control, one set of change parts for one size cap and container.

Fully automatic closure machine capable of applying overcaps or snap-caps at production rate of up to 200 per minute. Model UF can handle plastic overcaps, childproof closures and double snap-caps.



REPRESENTED BY:



SPECIAL VARIATIONS QUOTED UPON REQUEST