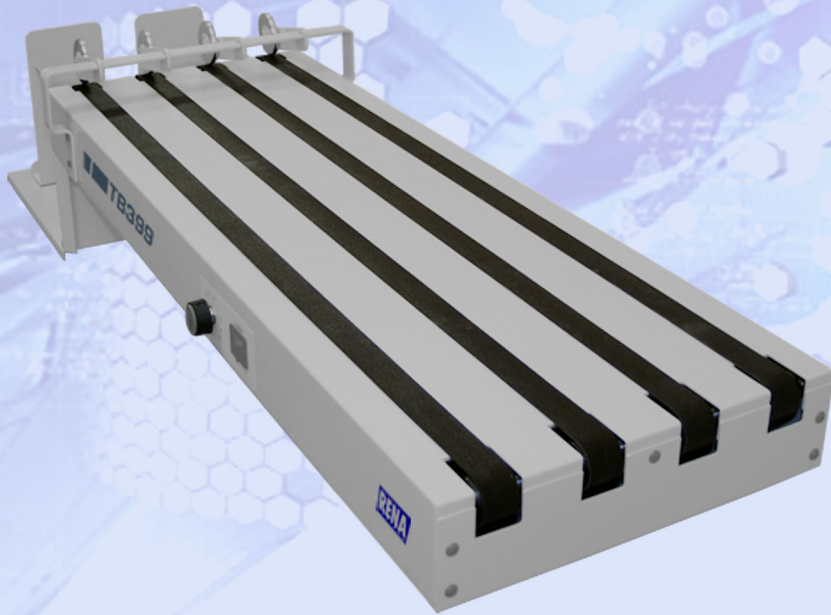


# RENA SYSTEMS

Addressing Mail Is What We Do™

TB-399



## The TB-399 3-Foot Conveyor/Dryer

Its fast, tough, versatile design and 1,000 Watt dryer option make the TB-399 one of Rena's most popular choices for use with our Envelope Imager series. It earns its reputation for outstanding performance and value by functioning flawlessly with any stock, in any workspace!

## Customize To Suit Your Inkjet Output Needs!

- 0 to 125 Feet Per Minute. Variable Control!
- 1,000 Watt Dryer, Producing 2325 BTUs!
- 250 No. 10 Envelope Stacking Capacity!
- Four Separate Belts For Extra Wide Transport Area!
- Up To 37" Height With Adjustable Leg Option!
- Accepts Material From A Range Of Equipment!
- Easily Customized For Any Workspace!



We continue to offer the most innovative products since we created the first tabletop addressing system 20 years ago. Now we offer everything you need to make the most out of your direct mail operation! Call us for more information on our inkjet systems: (888) 444-7362.

inkjet  
technology by



Packaging - Processing  
**Bid on Equipment**

1-847-683-7720

[www.bid-on-equipment.com](http://www.bid-on-equipment.com)



# RENA TB-399

## Customize To Suit Your Inkjet Output Needs!

### Product Specifications

- Conveyor Speed: 0 to 125 feet per minute.  
Infinitely variable control.
- Drying Unit: 1,000 Watts; 2,325 BTUs.
- Safety Features: Integrated power controls,  
Separate dryer shut-off and  
protective covers.
- Floor Stand: Built-in. Adjustable height option.
- Material Control: Drop stacker side guides.
- Stacking Capacity: 250 No. 10 Envelopes.
- Deck Width: 12.5" with four transport belts.
- Deck Height: 3" (26" to 37" with leg option)
- Power Source: 120/240 VAC.
- Dimensions: 35.5" L x 12.5" W x 3" H.
- Shipping Weight: 39 lbs.

All Specifications Subject To Change Without Notice  
Revised 9/06 | Item #1074

### True Coated Stock Performance.

The RENA TB-399 Dryer/Conveyor is designed to handle glossy and coated stocks with ease. The optional 1,000-watt drying unit has over 2300 BTUs of heat output to aid drying on hard to print materials. Textured belts keep materials under control, and the magnetic catch tray guides adjust to ensure everything stays in order.

### A Safe, Reliable Drying Solution.

The TB-399 runs from a standard 110V outlet - no need to rewire your production facility. The drying unit runs off the conveyor power and shuts down when the conveyor is turned off. The drying unit also has a separate power control so the TB-399 can be used with it on or off. The heat lamps have a protective mesh to prevent contact with materials or hands.

### Versatile Design.

With available adjustable legs and cross-stacking fence, the TB-399 can accommodate a wide range of jobs and materials. The TB-399 can be configured for almost any job on 3" x 5" cards to 9" x 12" flats and everything in between.

### Durable With A Great Value.

The TB-399 has tough steel and alloy construction that assures the owner of years of continuous use for a very reasonable price.

## See These Unique TB-399 Conveyor Features Up Close

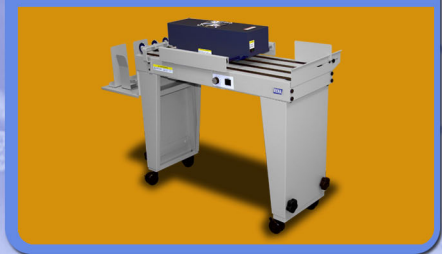
### TB-399 With Imager 2XP



### 1,000 W Dryer



### TB-399S With All Options



See it for yourself! Contact your local RENA representative or call RENA TOLL FREE at (888) 444-RENA (7362) | (610) 650-9171 fax | sales@renausa.com | www.renausa.com

Authorized RENA Systems Dealer:



RENA Systems, Inc.  
136 Green Tree Road, Ste 140  
PO Box 1069  
Oaks, PA 19456-1069

Packaging - Processing  
**Bid on Equipment**  
1-847-683-7720  
www.bid-on-equipment.com